

MODEL No. KR-75N5DFS A
 MAX INLET: 5000 PSI
 REGULATED OUTLET: 300-3000 PSI
 SPECIFIED FLOW: 75 GPM
 Cv Outlet: 9.40
 Cv Vent: 1.40
 SUPPLY PORT: 1" NPT
 REGULATED OUTLET: 1" NPT
 VENT PORT: 1/2" NPT
 OPERATOR: FAIL SAFE AIR MOTOR

MATERIAL:
 • BODY: STAINLESS STEEL
 • FLANGES & OPERATORS: CARBON STEEL
 • INTERNAL: STAINLESS STEEL
 • O-RINGS: BUNA (NITRILE)
 • BACKUPS:TEFLON

NOTE:
 1. TURN CLOCKWISE TO LOCK FOR HYDRAULIC OPERATION
 2. TURN COUNTER-CLOCKWISE TO UNLOCK FOR MANUAL OPERATION

TEMPERATURE RATING: -30°F TO 180°F
 WEIGHT: 73 LBS

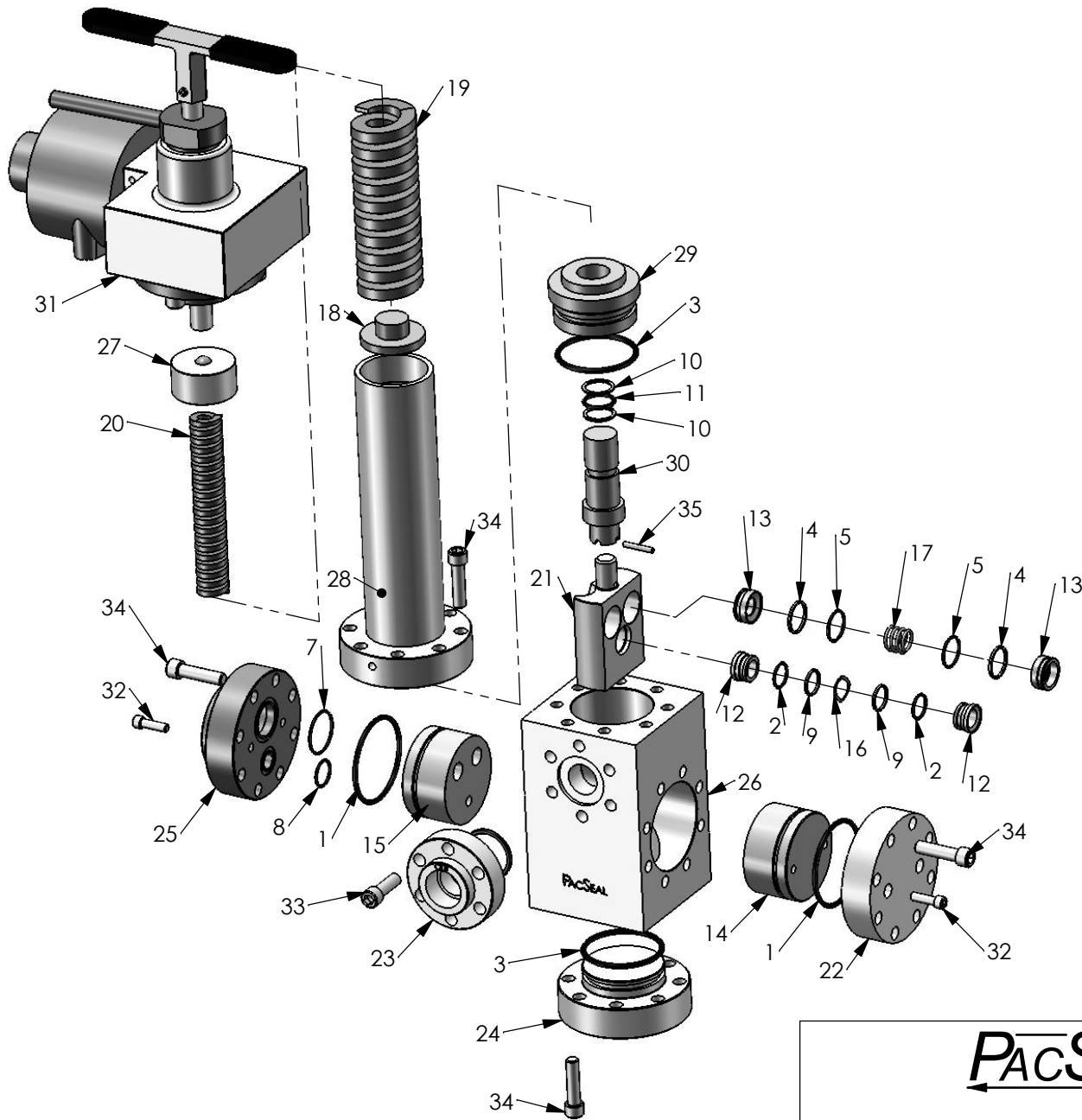
PROPRIETARY AND CONFIDENTIAL

THE INFORMATION CONTAINED IN THIS DRAWING IS THE SOLE PROPERTY OF PacSeal Hydraulics. ANY REPRODUCTION IN PART OR AS A WHOLE WITHOUT THE WRITTEN PERMISSION OF PacSeal Hydraulics IS PROHIBITED.

PacSeal Hydraulics Inc.

VALVES, ACCUMULATORS, CONTROLS

TITLE	SIZE	DWG. NO.	REV
Regulator, KR-75 FSA	A	40-1918	2
	SCALE: 1:5		SHEET 1 OF 2



ITEM NO.	PART NUMBER	DESCRIPTION	QTY.
1	23-1263	O-Ring	2
2	23-1293	O-Ring	2
3	23-1319	O-Ring	2
4	23-1322	Backup Ring	4
5	23-1323	O-Ring	4
6	23-1324	O-Ring	1
7	23-1325	O-Ring	1
8	23-1326	O-Ring	1
9	23-1329	Backup Ring	2
10	23-1331	Backup Ring	2
11	23-1332	O-Ring	1
12	40-0013	Seal Ring, Vent, KR-75	2
13	40-0014	Seal Ring, Supply	4
14	40-0015	Flow Plate, Blind	1
15	40-0016	Flow Plate	1
16	40-0109	Wave Spring	1
17	40-0110	Compression Spring	2
18	40-0134	Spring Plate	1
19	40-0143	Spring, Outer	1
20	40-0144	Spring, Inner	1
21	40-0182	Seal Container	1
22	40-0195	Flange, Blind	1
23	40-0196	Flange, Outlet	1
24	40-0197	Flange, Lower	1
25	40-0198	Flange, Main	1
26	40-0200	Body, KR-75	1
27	40-0300	Spring Guide	1
28	40-0383	Adjustment Head	1
29	40-1076	Plunger Guide, KR-75 D	1
30	40-1077	Piston, KR-75D	1
31	40-1649	Actuator, KR FSA H.P.	1
32	50-0066	SHCS	4
33	50-0068	Bolt, SHCS	6
34	50-0069	Bolt, SHCS	32
35	50-0117	Roll Pin	1

PacSeal HYDRAULICS INC.

VALVES, ACCUMULATORS, CONTROLS

PROPRIETARY AND CONFIDENTIAL
 THE INFORMATION CONTAINED IN THIS DRAWING IS THE SOLE PROPERTY OF PacSeal Hydraulics. ANY REPRODUCTION IN PART OR AS A WHOLE WITHOUT THE WRITTEN PERMISSION OF PacSeal Hydraulics IS PROHIBITED.

TITLE
Regulator, KR-75 FSA

SIZE	DWG. NO.	REV
A	40-1918	2

SCALE: 1:5 SHEET 2 OF 2