

Model No.: KR-140S5DFSA
 MAX INLET: 5000 PSI
 REGULATED OUTLET: 300-3000 PSI
 SPECIFIED FLOW: 150 GPM
 Cv Outlet: 14.9
 Cv Vent: 2.80
 SUPPLY PORT (2): 1" SAE
 REGULATED OUTLET: 1-1/2" SAE
 VENT PORT (2): 1/2" SAE
 OPERATOR: FAILSAFE AIR MOTOR

MATERIAL:
 • BODY: STAINLESS STEEL
 • FLANGES & OPERATORS: CARBON STEEL
 • INTERNAL: STAINLESS STEEL
 • O-RINGS: BUNA (NITRILE)
 • BACKUPS:TEFLON

TEMPERATURE RATING: -30°F TO 180°F
 WEIGHT: 75 LBS

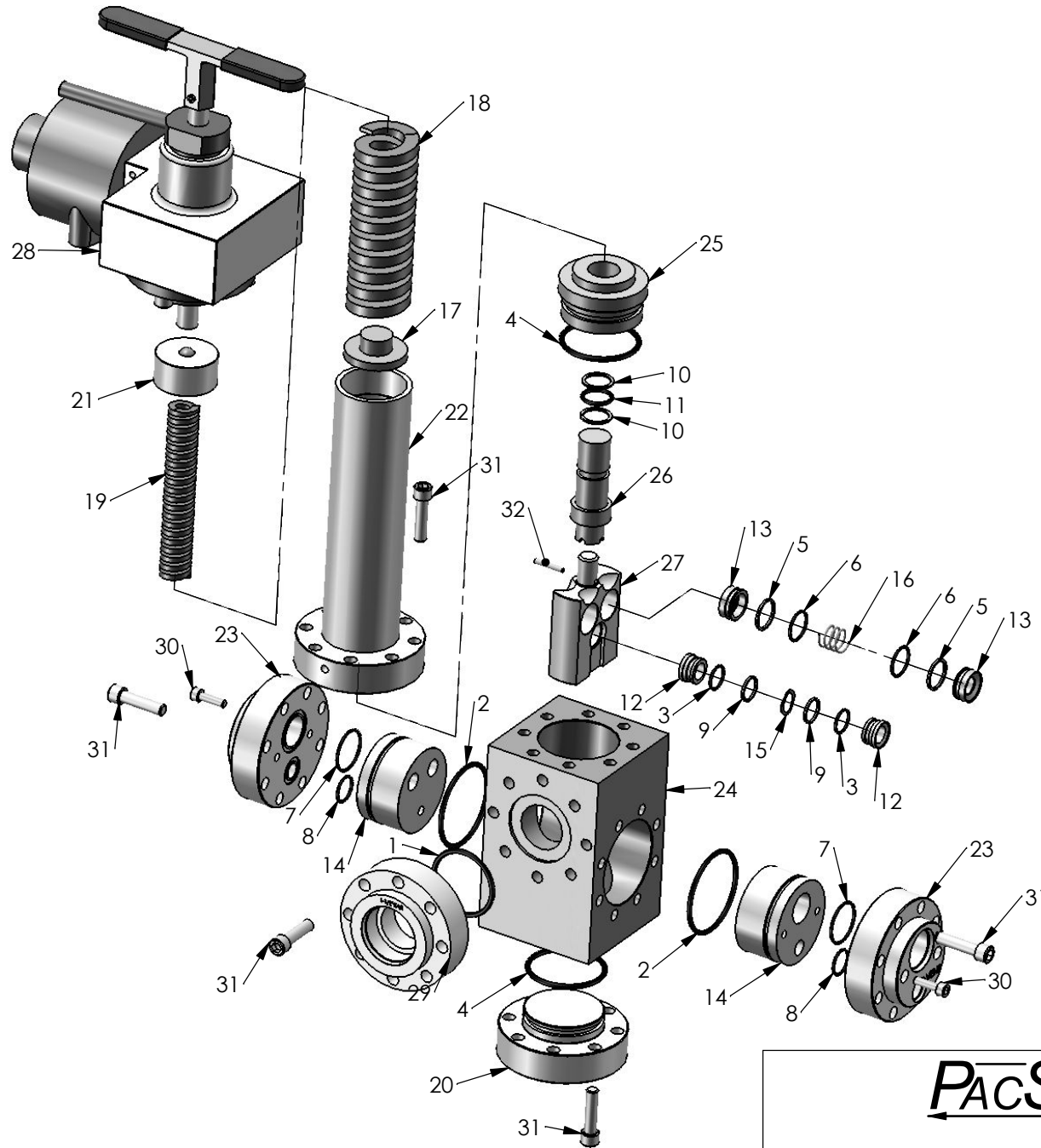
NOTE:
 1. TURN CLOCKWISE TO LOCK FOR FAILSAFE AIR OPERATION
 2. TURN COUNTER-CLOCKWISE TO UNLOCK FOR MANUAL OPERATION

PacSeal HYDRAULICS INC.

VALVES, ACCUMULATORS, CONTROLS

PROPRIETARY AND CONFIDENTIAL
 THE INFORMATION CONTAINED IN THIS DRAWING IS THE SOLE PROPERTY OF PacSeal Hydraulics. ANY REPRODUCTION IN PART OR AS A WHOLE WITHOUT THE WRITTEN PERMISSION OF PacSeal Hydraulics IS PROHIBITED.

TITLE	SIZE	DWG. NO.	REV
Regulator, KR-140S5DFSA SAE-Ports	A	40-2446	1
SCALE: 1:6		SHEET 1 OF 2	



ITEM NO.	PART NUMBER	DESCRIPTION	QTY.
1	23-1126	O-Ring	1
2	23-1263	O-Ring	2
3	23-1293	O-Ring	2
4	23-1319	O-Ring	2
5	23-1322	Backup Ring	4
6	23-1323	O-Ring	4
7	23-1325	O-Ring	2
8	23-1326	O-Ring	2
9	23-1329	Backup Ring	2
10	23-1331	Backup Ring	2
11	23-1332	O-Ring	1
12	40-0013	Seal Ring, Vent, KR-75	2
13	40-0014	Seal Ring, Supply	4
14	40-0016	Flow Plate	2
15	40-0109	Wave Spring	1
16	40-0110	Compression Spring	2
17	40-0134	Spring Plate	1
18	40-0143	Spring, Outer	1
19	40-0144	Spring, Inner	1
20	40-0197	Flange, Lower	1
21	40-0300	Spring Guide	1
22	40-0383	Ajustment Head	1
23	40-0894	Flange, Main w/SAE Ports	2
24	40-0950	Body, KR-140	1
25	40-1076	Plunger Guide, KR-75 D	1
26	40-1077	Piston, KR-75D	1
27	40-1292	Seal Container	1
28	40-1649	Actuator, KR FSA H.P.	1
29	40-2194	Flange, Outlet (#24 SAE)	1
30	50-0066	Bolt, SHCS	4
31	50-0069	Bolt, SHCS	40
32	50-0117	Roll Pin	1

PacSeal Hydraulics Inc.

VALVES, ACCUMULATORS, CONTROLS

PROPRIETARY AND CONFIDENTIAL
 THE INFORMATION CONTAINED IN THIS DRAWING IS THE SOLE PROPERTY OF PacSeal Hydraulics. ANY REPRODUCTION IN PART OR AS A WHOLE WITHOUT THE WRITTEN PERMISSION OF PacSeal Hydraulics IS PROHIBITED.

TITLE
Regulator, KR-140S5DFSA
SAE-Ports

SIZE	DWG. NO.	REV
A	40-2446	1
SCALE: 1:5		SHEET 2 OF 2