

MODEL No. : KR-38S3EM-4P
 MAX INLET: 3000 PSI
 REGULATED OUTLET: 300-1500 PSI
 SPECIFIED FLOW: 15 GPM
 Cv Outlet: 1.84
 Cv Vent: 1.84
 SUPPLY PORT: 1/2" SAE
 REGULATED OUTLET: 1/2" SAE
 VENT PORT: 1/2" SAE
 OPERATOR: MANUAL OPERATOR

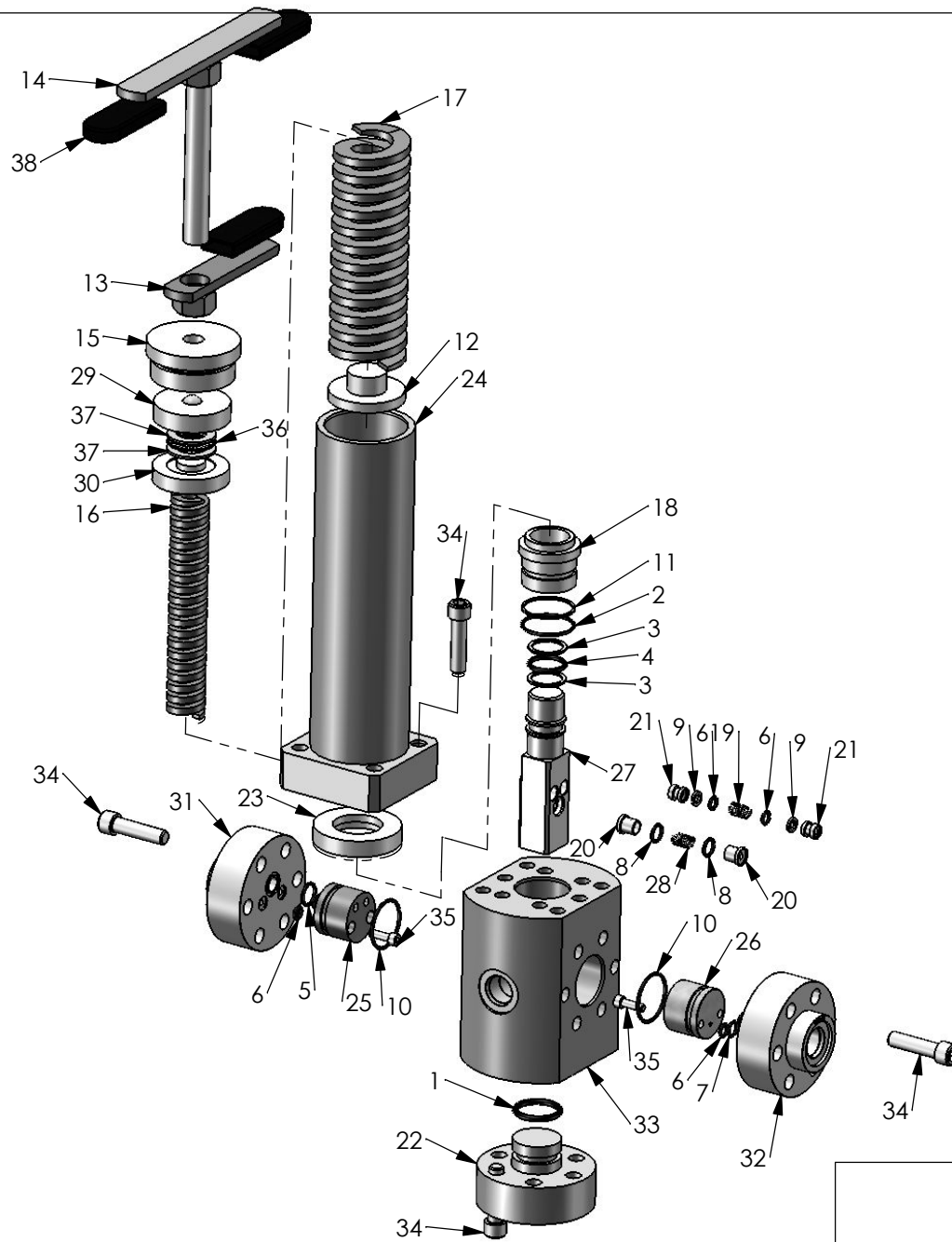
- MATERIAL:
- BODY & FLANGES: 416 SS
 - OPERATORS: CARBON STEEL
 - INTERNAL: STAINLESS STEEL & BRASS
 - O-RINGS: BUNA (NITRILE)
 - BACKUPS: TEFLON

TEMPERATURE RATING: -30° TO 180°F
 WEIGHT: 32 LBS

PROPRIETARY AND CONFIDENTIAL
 THE INFORMATION CONTAINED IN THIS DRAWING IS THE SOLE PROPERTY OF PacSeal Hydraulics. ANY REPRODUCTION IN PART OR AS A WHOLE WITHOUT THE WRITTEN PERMISSION OF PacSeal Hydraulics IS PROHIBITED.

PacSeal Hydraulics Inc.
 VALVES, ACCUMULATORS, CONTROLS

| | | | |
|--|------------------|----------------------------|-----------------|
| TITLE Regulator, KR-38M SS SAE Ports | SIZE A | DWG. NO. 40-2488 | REV 3 |
| SCALE: 1:3 | | WEIGHT: 31 | SHEET 1 OF 2 |



| ITEM NO. | PART NUMBER | DESCRIPTION | QTY. |
|----------|-------------|-------------------------------|------|
| 1 | 23-1141 | O-Ring | 1 |
| 2 | 23-1325 | O-Ring | 1 |
| 3 | 23-1331 | Backup Ring | 2 |
| 4 | 23-1332 | O-Ring | 1 |
| 5 | 23-1333 | O-Ring | 1 |
| 6 | 23-1335 | O-Ring | 8 |
| 7 | 23-1338 | O-Ring | 1 |
| 8 | 23-1344 | O-Ring | 2 |
| 9 | 23-1345 | Backup Ring | 4 |
| 10 | 23-1400 | O-Ring | 2 |
| 11 | 23-1433 | Backup Ring | 1 |
| 12 | 40-0134 | Spring Plate | 1 |
| 13 | 40-0135 | Lock Handle | 1 |
| 14 | 40-0136 | Adjusting Screw & Handle | 1 |
| 15 | 40-0140 | Plug, Adjustment Head | 1 |
| 16 | 40-0144 | Spring, Inner | 1 |
| 17 | 40-0189 | Spring, Outer | 1 |
| 18 | 40-0330 | Piston Guide | 1 |
| 19 | 40-0332 | Compression Spring | 2 |
| 20 | 40-0334 | Seal Ring, Vent | 2 |
| 21 | 40-0336 | Seal Ring, Supply | 4 |
| 22 | 40-0339 | Flange, Lower | 1 |
| 23 | 40-0345 | Adapter | 1 |
| 24 | 40-0388 | Adjustment Head | 1 |
| 25 | 40-0396 | Flow Plate, Supply | 1 |
| 26 | 40-0397 | Flow Plate, Vent KR-38 | 1 |
| 27 | 40-0398 | Seal Container | 1 |
| 28 | 40-0863 | Compression Spring | 1 |
| 29 | 40-1161 | Upper Bearing Body | 1 |
| 30 | 40-1163 | Lower Bearing Body | 1 |
| 31 | 40-2392 | Flange, Supply KR-38 1/2" SAE | 1 |
| 32 | 40-2393 | Flange, Vent KR-38 1/2" SAE | 1 |
| 33 | 40-2394 | Body, KR-12/38 - 1/2" SAE | 1 |
| 34 | 50-0069 | Bolt, SHCS | 22 |
| 35 | 50-0084 | Bolt | 4 |
| 36 | 50-0157B | Bearing, NTA-1220 | 1 |
| 37 | 50-0157T | Thrust Washer, TRB-1220 | 2 |
| 38 | 50-0239 | Grip, Handle | 3 |

PacSeal Hydraulics Inc.

VALVES, ACCUMULATORS, CONTROLS

PROPRIETARY AND CONFIDENTIAL
 THE INFORMATION CONTAINED IN THIS DRAWING IS THE SOLE PROPERTY OF PacSeal Hydraulics. ANY REPRODUCTION IN PART OR AS A WHOLE WITHOUT THE WRITTEN PERMISSION OF PacSeal Hydraulics IS PROHIBITED.

TITLE
**Regulator, KR-38M SS
 SAE Ports**

| | | |
|------------------|----------------------------|-----------------|
| SIZE A | DWG. NO. 40-2488 | REV 3 |
| SCALE: 2:9 | WEIGHT: 31 | SHEET 2 OF 2 |