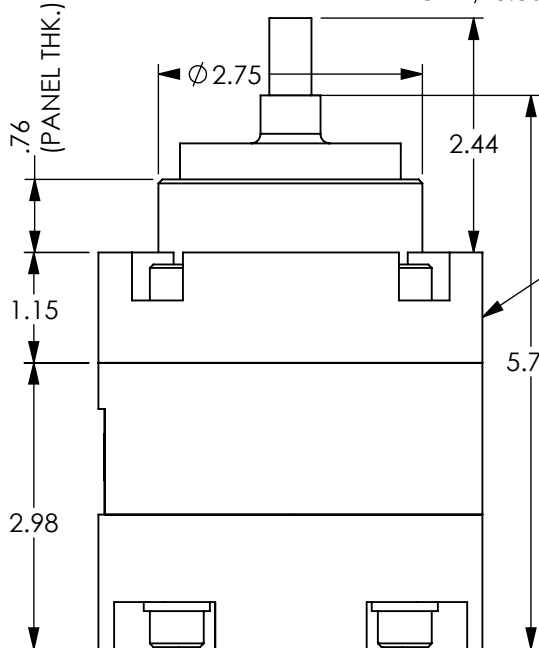


NEUTRAL POSITION  
3/8-16UN 4 PL  
ON  $\phi$ 3.36 B.C.



PANEL MOUNT  
ADAPTER

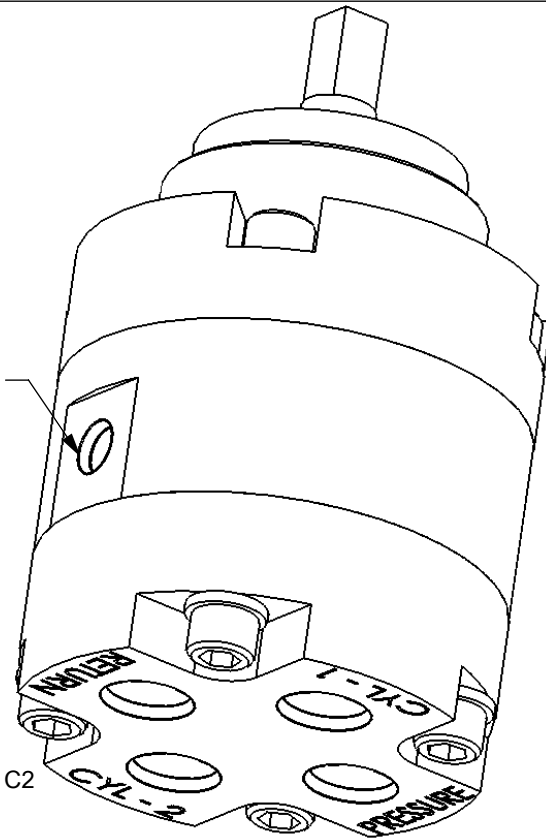
-W.P. : 6000 PSI ON PORTS: P, C1 & C2  
RETURN PORT: 250 PSI

-SERVICE: SUBSEA SERVICE

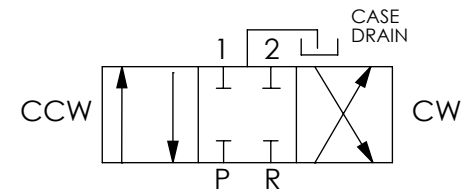
-MATERIALS:  
EXTERNAL: 316 SS  
INTERNAL (SEALING): 440c, 416, 316  
INTERNAL (NON SEALING):  
CARBON STEEL, BRONZE

-ELASTOMERS: NITRILE, TEFLON

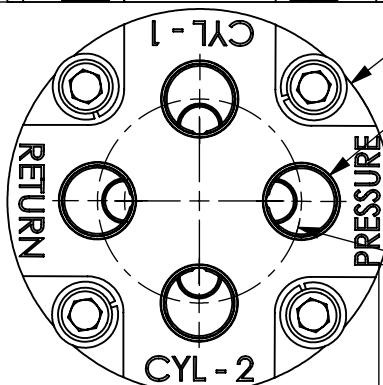
-MAX ACTUATION TORQUE: API 17D Class1 (50 ft\*lbs)



1/4" (#4) SAE PORT (1 PL)  
(CASE DRAIN TO TANK, 250 PSI MAX)



MANUAL OPERATION  
(3-POSITION DETENTED)  
MODEL No. SVS-50-6A1SN



$\phi$  4.00

1/2" (#8) SAE  
TYP 4 PL ON  $\phi$ 2.125 B.C.

$\phi$  2.125

**PRELIMINARY DRAWING**

(DESIGN SUBJECT TO CHANGE)

PROPRIETARY AND CONFIDENTIAL

THE INFORMATION CONTAINED IN THIS DRAWING IS THE SOLE  
PROPERTY OF PacSeal Hydraulics.  
ANY REPRODUCTION IN PART OR AS A WHOLE WITHOUT THE  
WRITTEN PERMISSION OF PacSeal Hydraulics IS PROHIBITED.

**PacSeal HYDRAULICS INC.**

VALVES, ACCUMULATORS, CONTROLS

TITLE  
Valve, SVS-50 6k All  
Blocked, Subsea

SIZE <b>A</b>	DWG. NO. <b>40-2529</b>	REV <b>A</b>
SCALE: 1:2	Weight: 14.6	SHEET 1 OF 2

