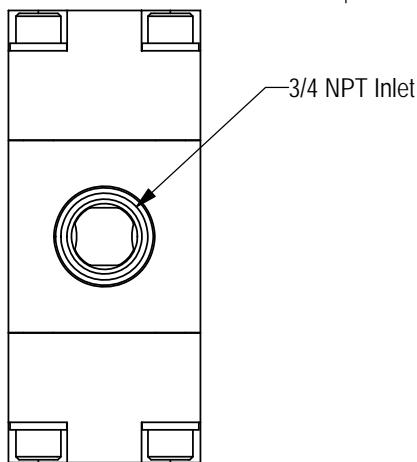
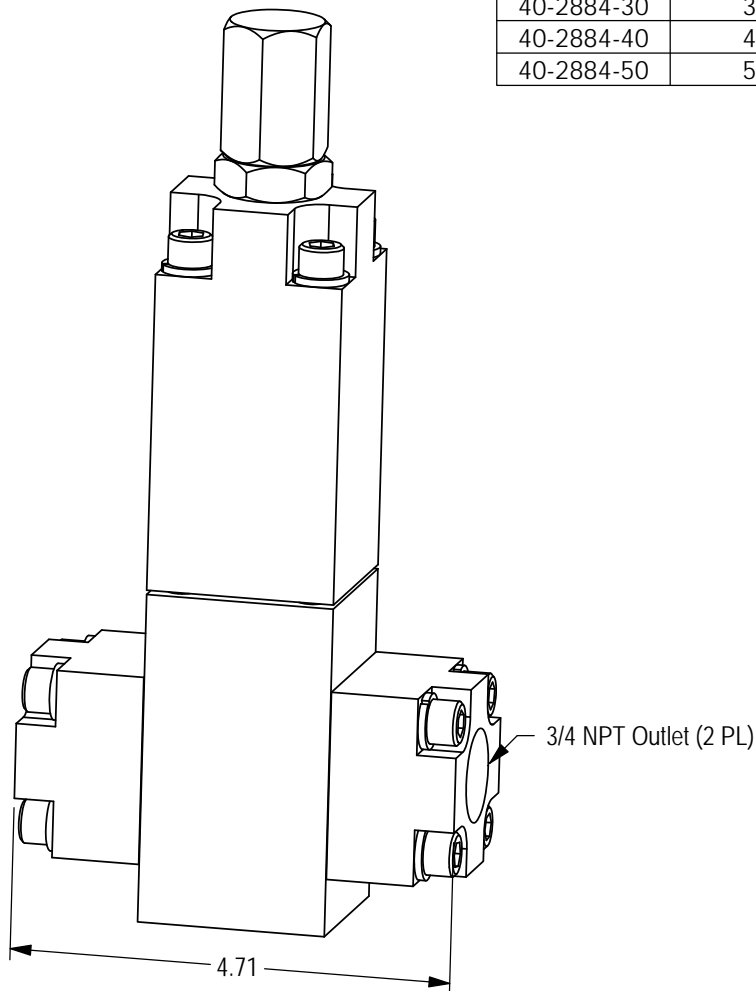
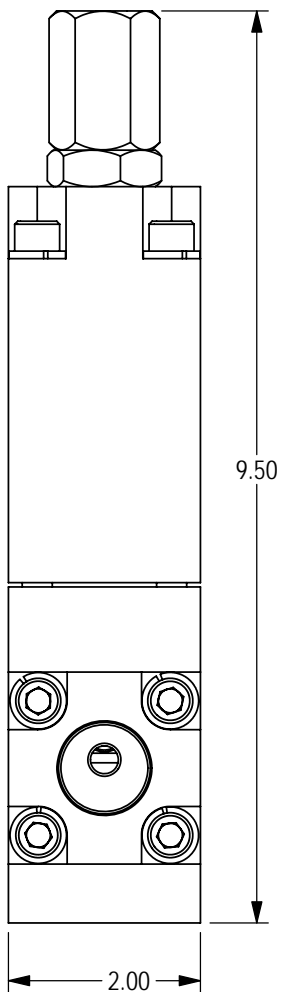


P/N	Working Pressure (PSI)	Set Pressure (PSI)
40-2884-10	1000	1100
40-2884-15	1500	1650
40-2884-20	2000	2200
40-2884-30	3000	3300
40-2884-40	4000	4400
40-2884-50	5000	5500



Cv: 6.0
 FLOW: 50 GPM
 TEMP RATING: -30° TO 180°F

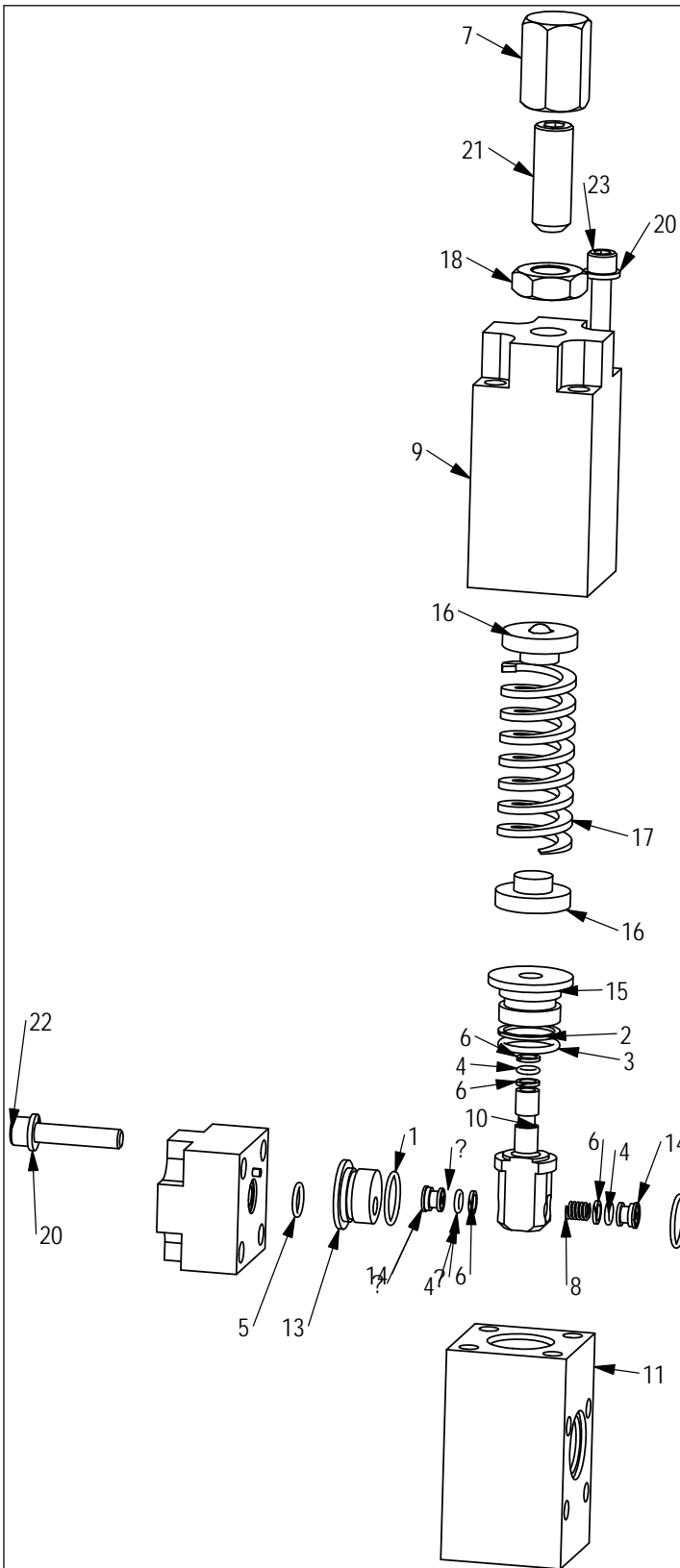
MATERIAL:

- BODY, FLANGES: CARBON STEEL
- INTERNAL: 416SS & BRASS
- SHEARFLO SEALING COMPONENTS:
440c HARDENED
- O-RINGS: BUNA (NITRILE)
- BACKUPS: TEFLON

REV	ECN	DATE	TOLERANCES			PacSeal Hydraulics		
-	-	-	UNLESS OTHERWISE SPECIFIED DIMENSIONS ARE IN INCHES			DRAWN	FS	3/24/15
-	-	-	REMOVE BURRS & SHARP EDGES .020" MAX MACH FILLET RADIUS .020" Max MACH SURF FLAT WITHIN .001 IN. /IN. THREADS: CLASS 2A or 2B DIMENSIONS IN () ARE REFERENCE DIM.			CHECKED	JB	3/26/15
-	-	-	DIMENSIONAL TOLERANCES			ENG APPR.		
			.x ± .020	ANGULAR ± 5°	MFG APPR.			
			.xx ± .010		Q.A.			
			.xxx ± .005	SURFACE FINISH: 125 ✓	COMMENTS:			
PROPRIETARY AND CONFIDENTIAL THE INFORMATION CONTAINED IN THIS DRAWING IS THE SOLE PROPERTY OF PacSeal Hydraulics. ANY REPRODUCTION IN PART OR AS A WHOLE WITHOUT THE WRITTEN PERMISSION OF PacSeal Hydraulics IS PROHIBITED.			DO NOT SCALE DRAWING			THIRD ANGLE PROJECTION		
			MATERIAL			SIZE DWG. NO. REV A 40-2884 5		
			FINISH			SCALE: 1:2 WEIGHT: 9.7 SHEET 1 OF 2		

40-2884

ITEM NO.	PART NUMBER	DESCRIPTION	QTY.
1	23-1326	O-Ring	2
2	23-1331	Backup Ring	1
3	23-1332	O-Ring	1
4	23-1335	O-Ring	3
5	23-1343	O-Ring	2
6	23-1345	Backup Ring	4
7	40-0162	Thread Guard, RV-75	1
8	40-0332	Spring	1
9	40-2885	Adjustment Head, RVS	1
10	40-2886	Seal Container, RVS-75	1
11	40-2887	Body, RVS-75	1
12	40-2888	Outlet Flange, RVS-75	2
13	40-2889	Flow Plate, RVS-75	2
14	40-2890	Seal Ring, RVS-75	2
15	40-2891	Piston Guide, RVS-75	1
16	40-2892	Ball Guide	2
17	40-2903	Die Spring	1
18	50-0062	Jam Nut, RV-75	1
19	50-0070	Roll Pin	2
20	50-0142	Lock Washer	12
21	50-0458	Set Screw, Cup	1
22	50-0459	SHCS	8
23	50-0460	SHCS	4



REV	ECN	DATE	TOLERANCES			PacSeal Hydraulics			
-	-	-	UNLESS OTHERWISE SPECIFIED DIMENSIONS ARE IN INCHES			DRAWN	FS	3/24/15	TITLE: RVS-75 Relief Valve
-	-	-	REMOVE BURRS & SHARP EDGES .020" MAX MACH FILLET RADIUS .020" Max MACH SURF FLAT WITHIN .001 IN. /IN. THREADS: CLASS 2A or 2B DIMENSIONS IN () ARE REFERENCE DIM.			CHECKED	JB	3/26/15	
-	-	-	DIMENSIONAL TOLERANCES			ENG APPR.			
			.x ± .020 ANGULAR ± 5° .xx ± .010 SURFACE FINISH: 125 ✓ .xxx ± .005 DO NOT SCALE DRAWING			MFG APPR.			
			MATERIAL			Q.A.			
PROPRIETARY AND CONFIDENTIAL			FINISH			COMMENTS:			SIZE
THE INFORMATION CONTAINED IN THIS DRAWING IS THE SOLE PROPERTY OF PacSeal Hydraulics. ANY REPRODUCTION IN PART OR AS A WHOLE WITHOUT THE WRITTEN PERMISSION OF PacSeal Hydraulics IS PROHIBITED.						THIRD ANGLE PROJECTION			DWG. NO.
									A
									40-2884
									REV
									5
									SCALE: 1:3
									WEIGHT: 9.7
									SHEET 2 OF 2

40-2884