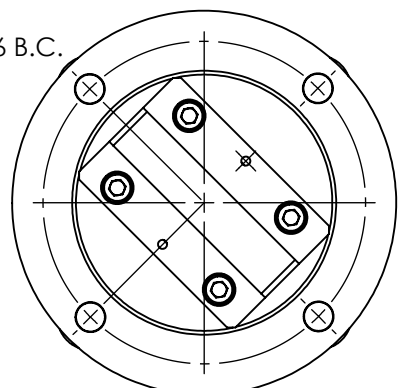
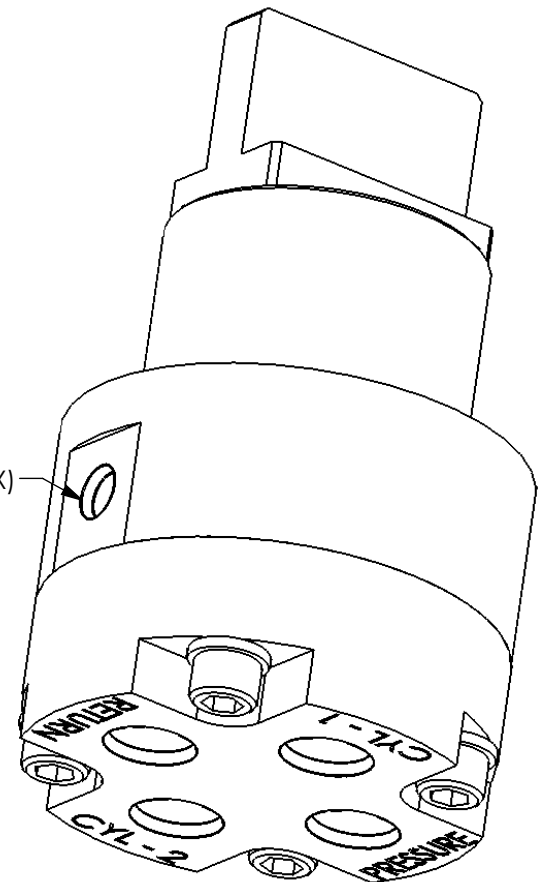


OPEN (P -> C1; C2 -> R)

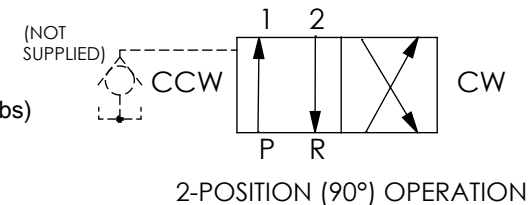
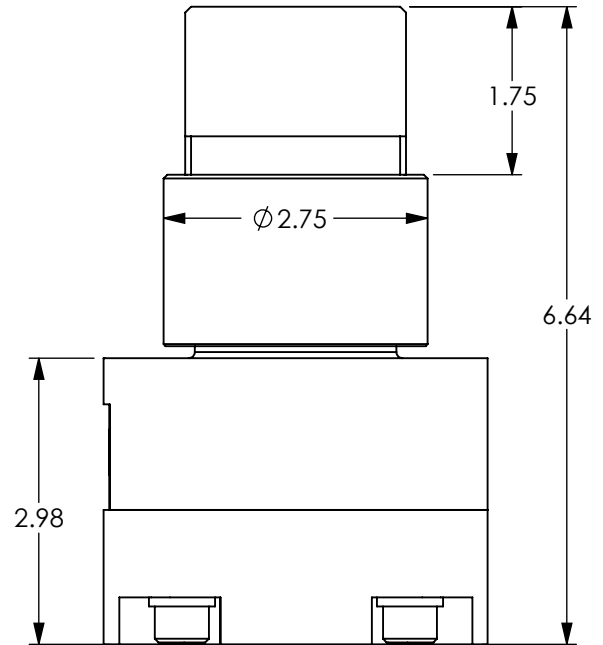


CLOSE (P -> C2; C1 -> R)

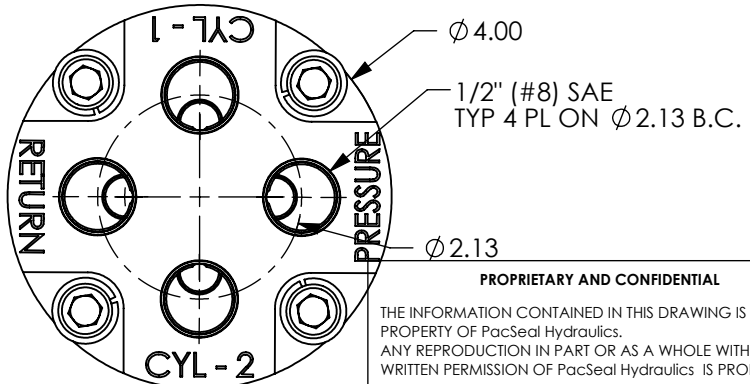
1/4" (#4) SAE PORT (1 PL)  
(CASE DRAIN TO TANK, 250 PSI MAX)



- W.P. : 3000 PSI ON PORTS: P, C1 & C2
- Cv: 3.2
- SERVICE: SUBSEA SERVICE
- MATERIALS:  
EXTERNAL: 316 SS  
INTERNAL (SEALING): 440c, 416, 316  
INTERNAL (NON SEALING):  
CARBON STEEL, BRONZE
- ELASTOMERS: NITRILE, TEFLON
- MAX ACTUATION TORQUE: API 17D Class1 (50 ft\*lbs)
- ROTOR: Shutoff



2-POSITION (90°) OPERATION



PROPRIETARY AND CONFIDENTIAL  
THE INFORMATION CONTAINED IN THIS DRAWING IS THE SOLE PROPERTY OF PacSeal Hydraulics. ANY REPRODUCTION IN PART OR AS A WHOLE WITHOUT THE WRITTEN PERMISSION OF PacSeal Hydraulics IS PROHIBITED.

MODEL No. SVS-50 3A2PN

**PacSeal HYDRAULICS INC.**

VALVES, ACCUMULATORS, CONTROLS

TITLE	Valve, SVS-50 All Blocked	SIZE	A	DWG. NO.	40-2913	REV	A
		SCALE: 1:2	Weight: 13.0	SHEET 1 OF 2			

