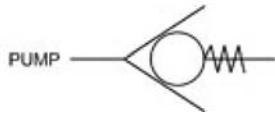
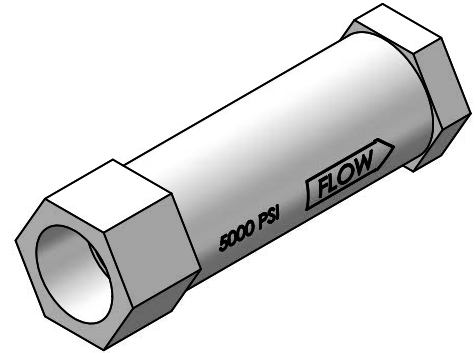


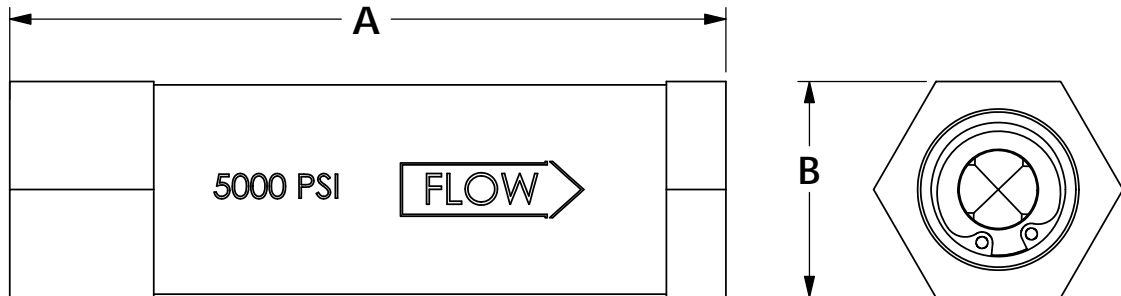
Check Valves

Rated Working Pressure: 5000 PSI
 Temperature Rating: -65°F TO 350°F
 Material:

- Body: Carbon Steel, Zinc Plated
- Poppet: 416 SS HARDENED
- Spring: 302 SS
- Snap Ring: Zinc Plated Steel



Note:
 Never rely on the check valve as a block valve
 for downstream maintenance.



Part No	Model No.	Port size, Female	Length "A" (Inches)	Width "B" (Inches)	Weight (lbs)	Cv
40-1508	CV-50	1/2" NPT	3.73"	1.13"	0.6	5
40-1507	CV-100	1" NPT	4.88"	1.75"	2.1	12

PACSEAL HYDRAULICS INC.

VALVES, ACCUMULATORS, CONTROLS

PROPRIETARY AND CONFIDENTIAL
 THE INFORMATION CONTAINED IN THIS DRAWING IS THE SOLE
 PROPERTY OF PacSeal Hydraulics.
 ANY REPRODUCTION IN PART OR AS A WHOLE WITHOUT THE
 WRITTEN PERMISSION OF PacSeal Hydraulics IS PROHIBITED.

SIZE
A

TITLE
Check Valve
Data Sheet

REV
2

SCALE: 1:1

SHEET 1 OF 1