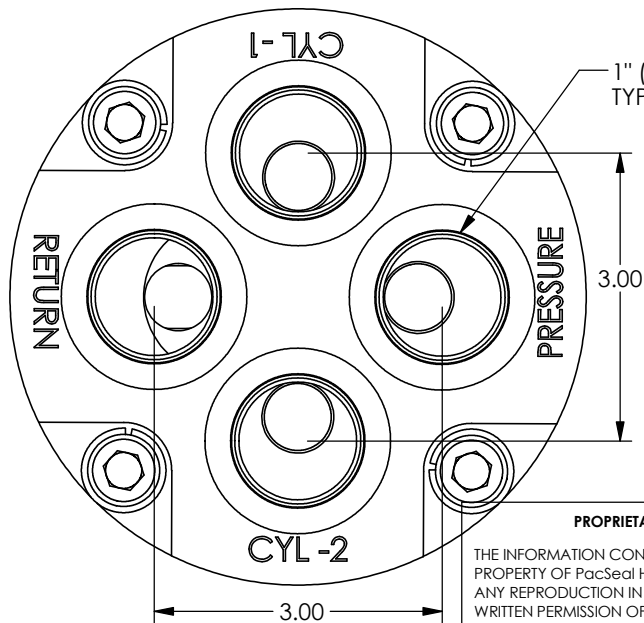
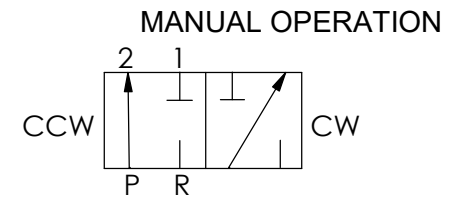


- W.P. : 6000 PSI ON PORTS: P, C1 & C2
RETURN PORT: 250 PSI
- SERVICE: SUBSEA SERVICE
- MATERIALS:
EXTERNAL: 316 SS
INTERNAL: 440c, 416, 316
INTERNAL (NON SEALING): BRONZE
- ELASTOMERS: NITRILE, TEFLON
- MAX ACTUATION TORQUE: API 17D Class1 (50 ft*lbs)



MODEL NO: **SVS-100 6B2QN**
 ROTOR: Bypass
 ALL PORTS: 1" (#16) SAE
 WORKING PRESSURE: 6000 PSI
 RETURN PORT: 250 PSI MAX
 Cv: 9.2
 Flow (GPM): 75
 TEMP RATING: -40° TO 250°F



PacSeal HYDRAULICS INC.

VALVES, ACCUMULATORS, CONTROLS

PROPRIETARY AND CONFIDENTIAL
 THE INFORMATION CONTAINED IN THIS DRAWING IS THE SOLE PROPERTY OF PacSeal Hydraulics. ANY REPRODUCTION IN PART OR AS A WHOLE WITHOUT THE WRITTEN PERMISSION OF PacSeal Hydraulics IS PROHIBITED.

TITLE	SIZE	DWG. NO.	REV
Valve, SVS-100 /6k Bypass	A	40-4059	A
	SCALE: 1:2	WEIGHT: 40.0	SHEET 1 OF 2

