



SV-50 Valve Specifications Table of Contents

2. Specifications and Data Sheet
3. Specifications and Data Sheet, continued
4. Porting Configurations Overview
5. Operator Configurations Overview
6. Rotor Flow and Detent Disc 3-Position Options
7. Rotor Flow and Detent Disc 2-Position Options
8. General Assembly Overview
9. SV-50 Porting Options with Manual Operator Installation Drawing
10. SV-50 Spring Centered Operator Installation and Assembly Drawing
11. SV-50 Pin Lock Detent Operator Installation and Assembly Drawing
12. SVX-50 with 2-Position 90° Direct Air Actuation Installation and Assembly Drawing
13. SVX-50 with 3-Position 90° Direct Air Actuation Installation and Assembly Drawing
14. SVX-50 with 2-Position 90° Direct Hydraulic Installation and Assembly Drawing
15. SVX-50 with 2-Position 90° Spring Centered Direct Hydraulic Installation and Assembly Drawing
16. SV-50 with Air Cylinder Actuator Installation and Assembly Drawing
17. SV-50 with Hydraulic Cylinder Actuator Installation and Assembly Drawing



All PacSeal Hydraulics' SV Directional Control Valves are designed with ShearFlo® metal-to-metal sealing technology.

ShearFlo® sealing technology features:

- High cycle life and anti-wear design is suitable for critical service applications, including contaminated fluids.
- Leak proof, contaminant resistant metal-to-metal seal is accomplished by lapping and polishing hardened stainless steel sealing elements to exacting standards of finish and flatness.
- The sealing elements are spring preloaded and pressure energized, which maintains contact between the two sealing surfaces at all times.

All SV Valves are tested to PacSeal's strict quality control standards to ensure proper function and reliability. Every ShearFlo® sealing component in a repair kit is inspected to ensure trouble-free performance after field maintenance and repair.

PacSeal Hydraulics' rotary SV Directional Control Valves direct fluid flow to one or two cylinder ports, based on the selected rotor and detent combination, as specified in the "Valve Shift Options" table.

The SV valves' modular design accommodates various operator options (manual and remote with manual override) to suit the application at hand. The options available for manual operation are as follows:

- Detented (2 or 3-position)
- Spring Centered (3-position)
- Pin Lock Detent (3-position)

The remote operator options with manual override are available in pneumatic or hydraulic with 2 or 3 positions as follows:

- Actuator Cylinder bracket mounted to valve
- SVX Integral Actuator assembled atop the valve providing higher efficiency and immediate actuation

Various porting options provide further customization, as follows:

- Inline
- Bottom
- Subplate
- Manifold

General Specifications

Port Size	3/8 or 1/2 in. NPT or SAE ORB
Working Pressure Options (Liquid)	3000 or 6000 psi
Working Pressure Options (Gas)	2000 or 4000 psi
Return Port Pressure	250 psi (Max) ¹
Proof Pressure	1.5X Working Pressure
Burst Pressure	2X Working Pressure
Cv Factor	3.2
Rated Flow	30 gpm
Temp Rating	-40 to 250°F
Fluid Media	Hydraulic oil or lubricated water ²
Weight	See Installation Drawings

Materials

ShearFlo Sealing Components (Rotor and Seal Rings)	400 series SS Hardened ²
Shaft	400 series SS
Body	400 series SS
Housing	Carbon Steel
Handle, Detent Disc and Spacers, Hardware	Plated Carbon Steel
O-rings	Buna-N (N), Viton (V), or EPR (E)
Backup Rings	Teflon

¹ Full rated pressure (3000 or 6000 psi) with All Blocked Rotor option

² For water based media, special alloy seal rings may be required for optimum performance and durability - Contact PacSeal for details

Valve Shift Options

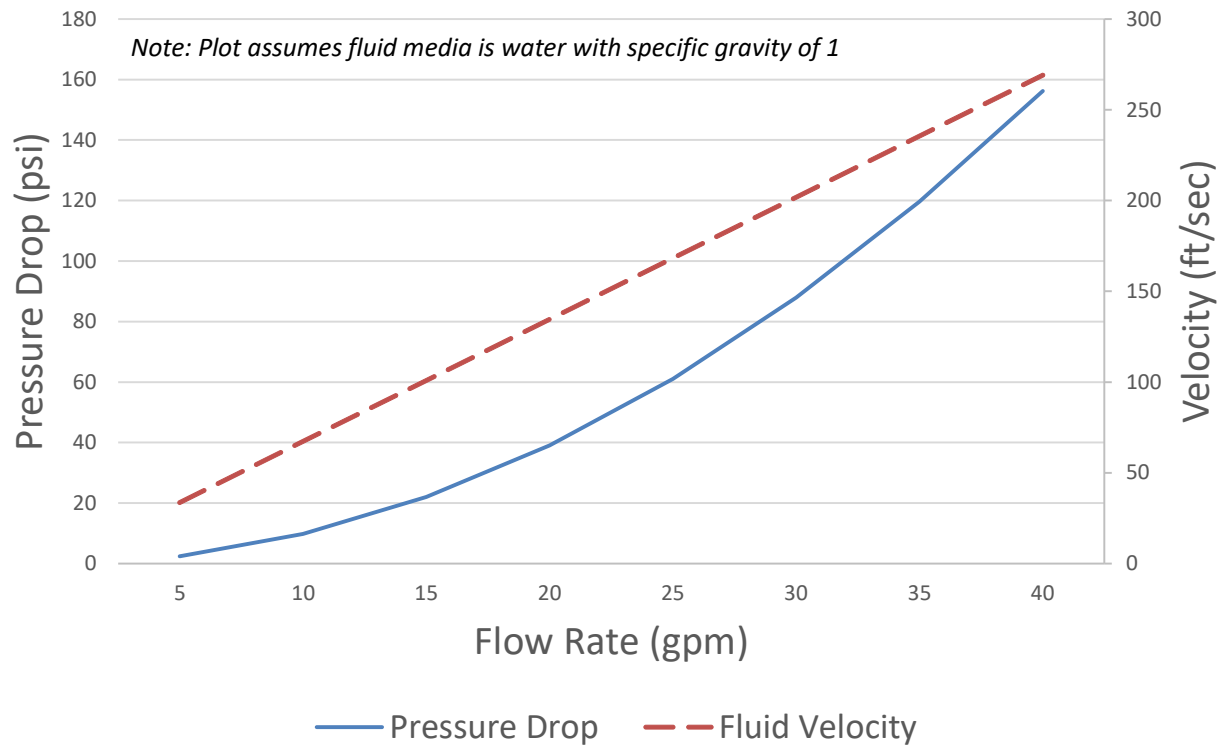
Detent Pattern	Valve Options
3-Position (4-way)	All options
2-Position 90° (4-way)	All options
2-Position 45° CW or CCW (3-way)	Selector, Manipulator, Open Center

Rotor Flow Options

Rotor Configuration	Center Position	CW or CCW Position
Manipulator	Cylinders drain to tank and pressure port blocked	Operates a cylinder port while the opposite port is returned to tank
Selector	Return port is open while cylinder and pressure ports are blocked	Operates a cylinder port while the opposite port is returned to tank
Bypass	Return port is open while cylinder and pressure ports are blocked	Operates a cylinder port while the opposite port is blocked
Open Center	Cylinder ports blocked while pressure and return ports are connected	Operates a cylinder port while the opposite port is returned to tank
All Blocked	All ports blocked. Case Drain Required	Operates a cylinder port while the opposite port is returned to tank



SV-50 Valve Pressure Drop and Fluid Velocity



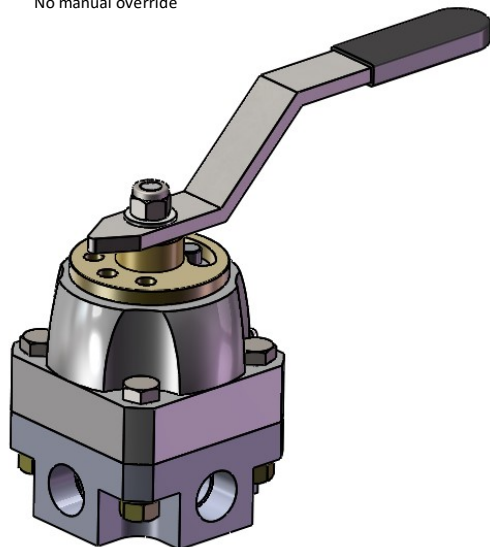
SV-50 Handle Torque (lb.-in.)

Rotor Type	At 1500 psi Supply Pressure	At 3000 psi Supply Pressure	At 5000 psi Supply Pressure	At 6000 psi Supply Pressure
Selector	44	60	100	108
Bypass*	71	96	156	285

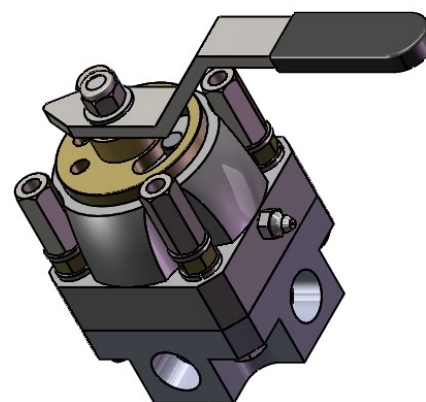
*Note: Higher torque is a result of having two supply pressures from C1 and C2

Model Number Configurator

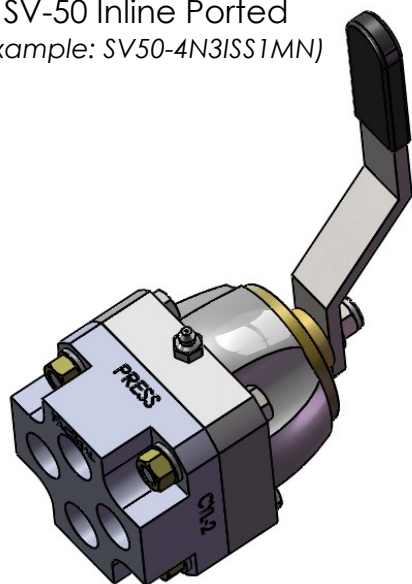
Basic Size	Port Size	Type of Ports	Pressure Rating	Port Location	Bolts	Rotor Flow Pattern	Valve/Actuator Positions	Actuation Type	Handle	O-Ring	Actuator Cylinder Position ²	Nameplate Add-on
SV50-	3 3/8"	N NPT	3 3000	I Inline / Side	S Std Short	S Selector	1 3-Pos.	None (leave blank)	M Standard Manual	N Buna-N	None (leave blank)	-0 Blank
	4 1/2"	S SAE	6 6000	B Bottom	L Long	O Open Center	2 2-Pos. 90°	A Air	R Actuator Cylinder	V Viton	L Left Mount	
		M Manifold			P Panel Mount	M Manipulator	3 2-Pos. 45° CW	H Hydraulic	S Spring Centered	E EPR	R Right Mount	
		B Subplate ¹			N None ³	B Bypass	4 2-Pos. 45° CCW		L Pin Lock Detent			
						A All Blocked ¹			W Wing Handle			
SVX50-	3 3/8"	N NPT	3 3000	I Inline / Side		S Selector	1 2-Pos. 90°	A Air - Direct Piloted	S Straight	N Buna-N		-0 Blank
	4 1/2"	S SAE	6 6000	B Bottom		O Open Center	2 2-Pos. 45°	H Hydraulic - Direct Piloted	W Wing	V Viton		
		M Manifold			N/A	M Manipulator	3 3-Pos. 90°	R Air - Solenoid Piloted	N Indicator ⁴	E EPR	N/A	
		B Subplate ¹				B Bypass	4 3-Pos. 90° - Spring Centered	U Hydraulic - Solenoid Piloted				
						A All Blocked ¹						

¹Not a standard Option²Use only if Actuator Cylinder is selected**Notes:** ³For Manifold Mount Option⁴No manual override

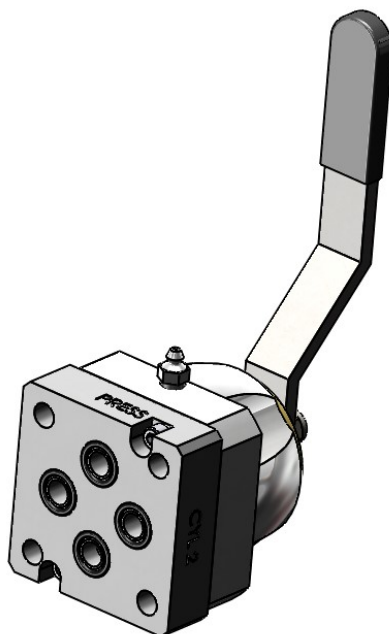
SV-50 Inline Ported
(Example: SV50-4N3ISS1MN)



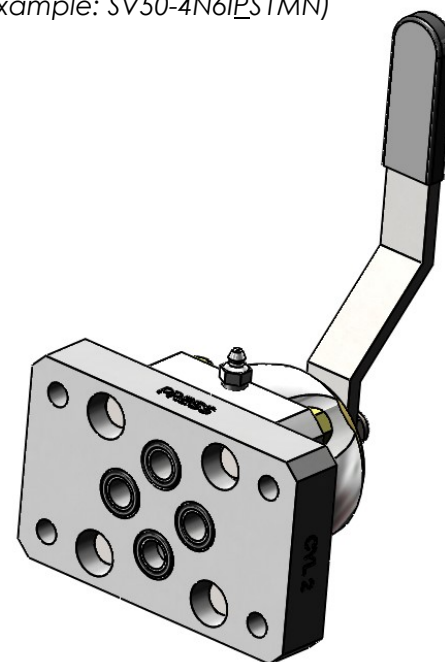
SV-50 Panel Mount
(Example: SV50-4N6IPS1MN)



SV-50 Bottom Ported
(Example: SV50-4N3BSS1MN)



SV-50 Manifold Ported
(Example: SV50-4M3BSS1MN)



SV-50 Subplate Ported
(Example: SV50-4S3BSS1MN)



PROPRIETARY AND CONFIDENTIAL

THE INFORMATION CONTAINED IN THIS DRAWING IS THE SOLE PROPERTY OF PacSeal.
ANY REPRODUCTION IN PART OR AS A WHOLE WITHOUT THE WRITTEN PERMISSION OF PacSeal IS PROHIBITED.

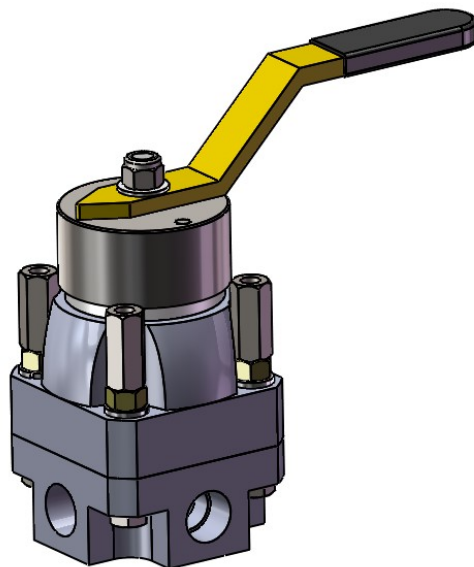
TITLE **SV-50 Porting Configurations Overview**

SIZE **A** REV **1**

SHEET 4 OF 17

Model Number Configurator

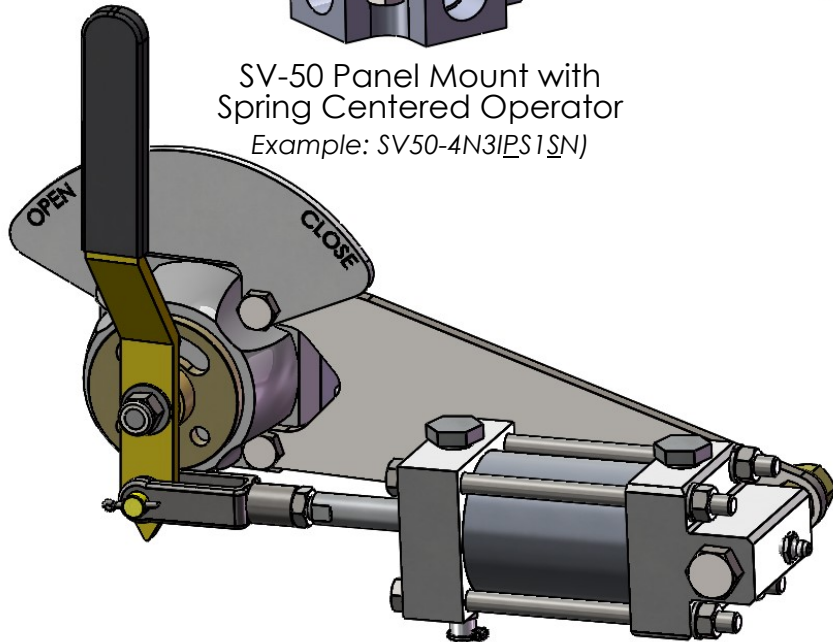
Basic Size	Port Size	Type of Ports	Pressure Rating	Port Location	Bolts	Rotor Flow Pattern	Valve/Actuator Positions	Actuation Type	Handle	O-Ring	Actuator Cylinder Position ²	Nameplate Add-on
SV50-	3 3/8"	N NPT	3 3000	I Inline / Side	S Std Short	S Selector	1 3-Pos.	None (leave blank)	M Standard Manual	N Buna-N	None (leave blank)	-0 Blank
	4 1/2"	S SAE	6 6000	B Bottom	L Long	O Open Center	2 2-Pos. 90°	A Air	R Actuator Cylinder	V Viton	L Left Mount	
		M Manifold			P Panel Mount	M Manipulator	3 2-Pos. 45° CW	H Hydraulic	S Spring Centered	E EPR	R Right Mount	
		B Subplate ¹			N None ³	B Bypass	4 2-Pos. 45° CCW		L Pin Lock Detent			
						A All Blocked ¹			W Wing Handle			
SVX50-	3 3/8"	N NPT	3 3000	I Inline / Side		S Selector	1 2-Pos. 90°	A Air - Direct Piloted	S Straight	N Buna-N		-0 Blank
	4 1/2"	S SAE	6 6000	B Bottom		O Open Center	2 2-Pos. 45°	H Hydraulic - Direct Piloted	W Wing	V Viton		
		M Manifold			N/A	M Manipulator	3 3-Pos. 90°	R Air - Solenoid Piloted	N Indicator ⁴	E EPR	N/A	
		B Subplate ¹				B Bypass	4 3-Pos. 90° - Spring Centered	U Hydraulic - Solenoid Piloted				
						A All Blocked ¹						

¹Not a standard Option²Use only if Actuator Cylinder is selected³For Manifold Mount Option⁴No manual override

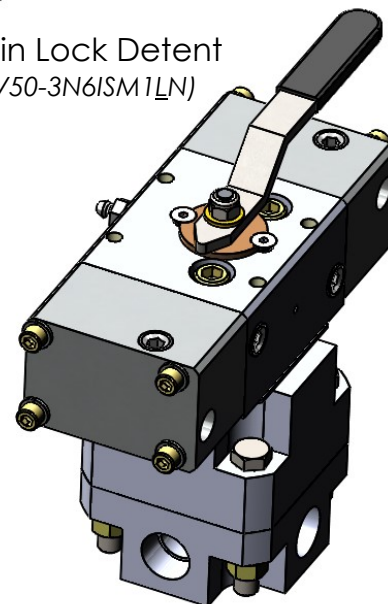
SV-50 Panel Mount with Spring Centered Operator
Example: SV50-4N3IPS1SN)



SV-50 with Pin Lock Detent
(Example: SV50-3N6ISM1LN)



SV-50 with Air Cylinder Actuator
(Example: SV50-4N3ISS1RN-AR0)



SVX-50 with 2 Pos. 90° Air Actuation
(Example: SVX50-3N3IS1ASN)



PROPRIETARY AND CONFIDENTIAL

THE INFORMATION CONTAINED IN THIS DRAWING IS THE SOLE PROPERTY OF PacSeal.
ANY REPRODUCTION IN PART OR AS A WHOLE WITHOUT THE WRITTEN PERMISSION OF PacSeal IS PROHIBITED.

TITLE **SV-50 Operator Configurations Overview**

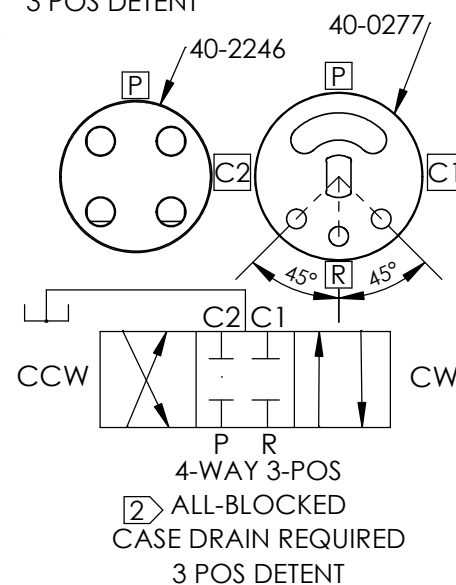
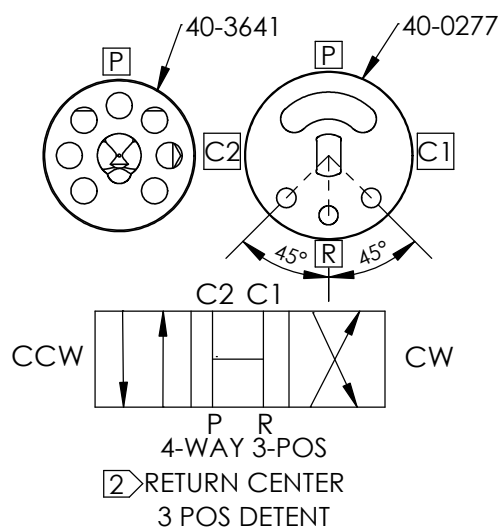
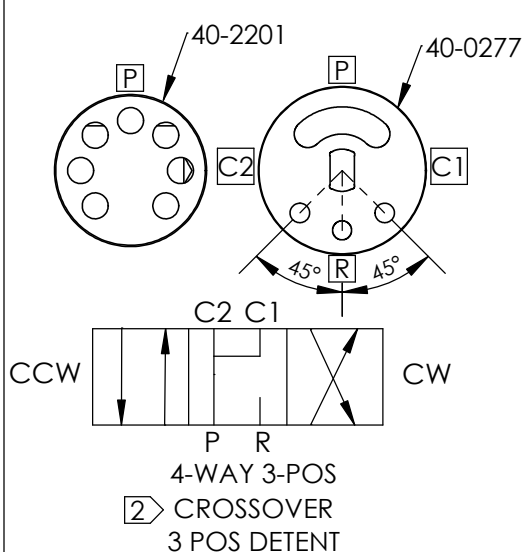
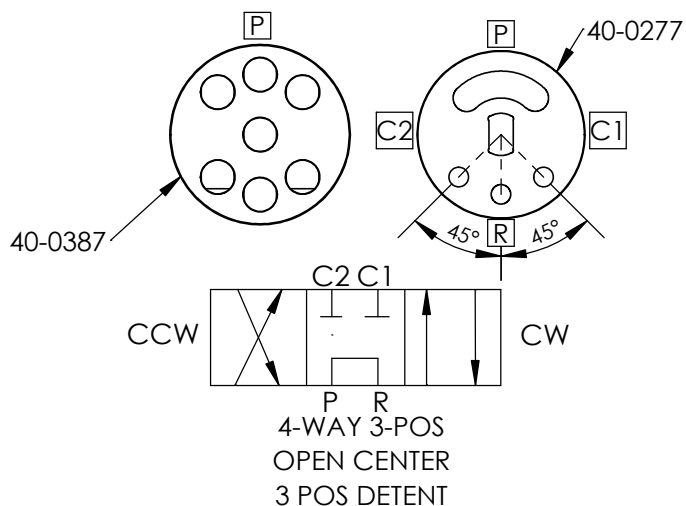
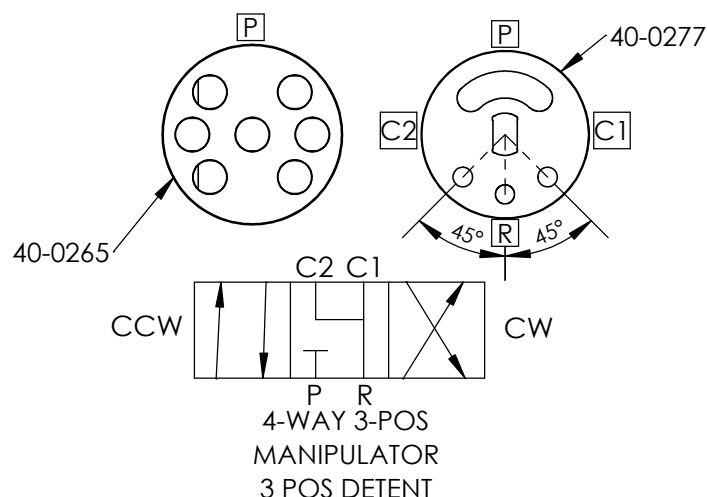
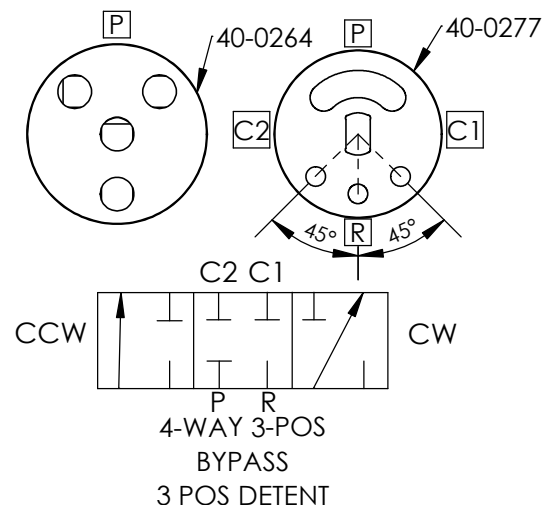
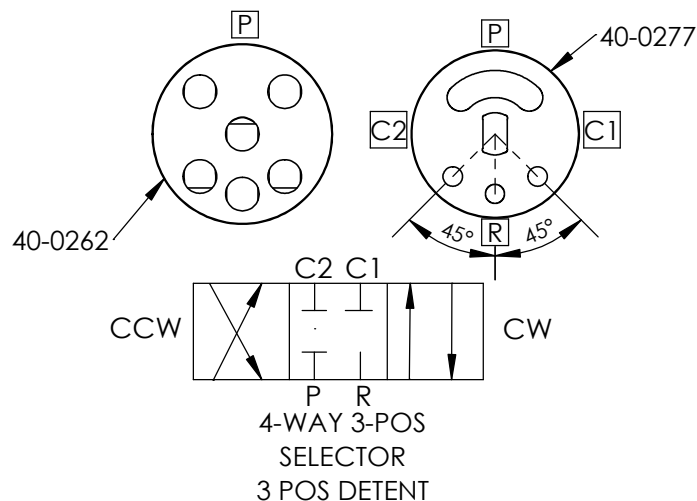
SIZE **A**

REV **1**

SHEET 5 OF 17

Notes:

1. Rotor and Detent Disc Part No.'s displayed
2. Not a standard stock item



PACSEAL →
← **HYDRAULICS**

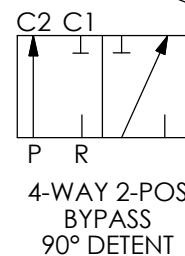
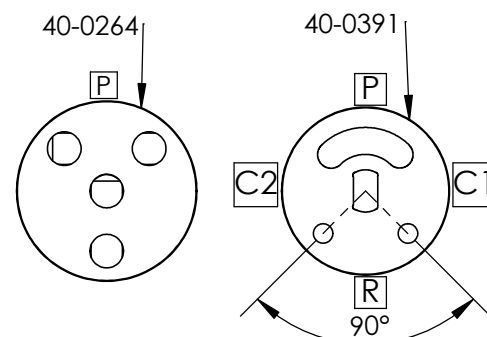
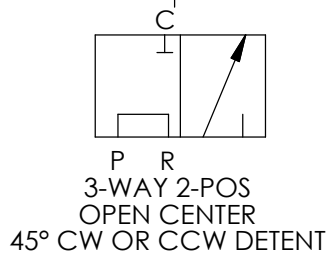
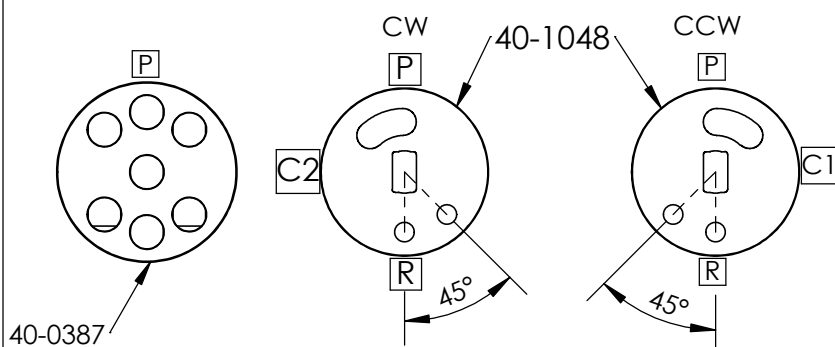
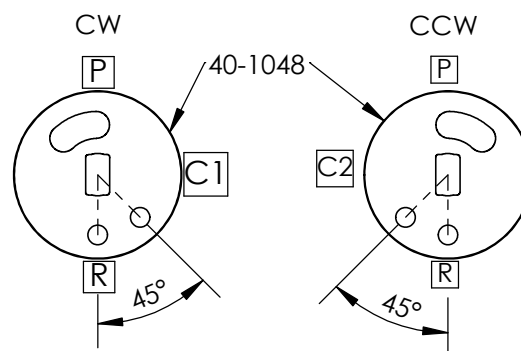
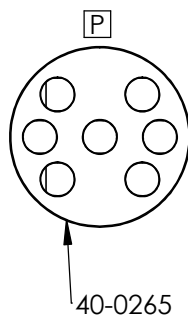
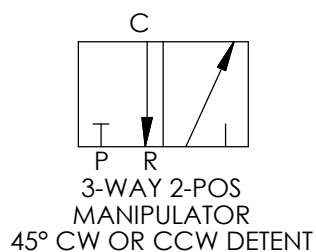
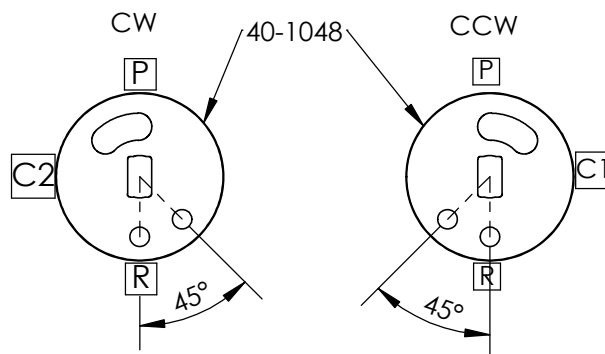
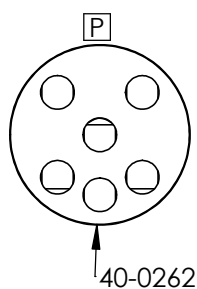
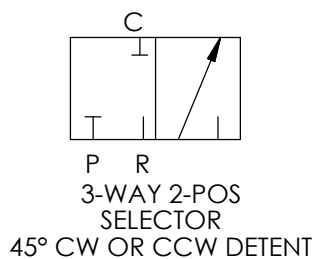
PROPRIETARY AND CONFIDENTIAL
THE INFORMATION CONTAINED IN THIS DRAWING IS THE SOLE
PROPERTY OF PacSeal.
ANY REPRODUCTION IN PART OR AS A WHOLE WITHOUT THE
WRITTEN PERMISSION OF PacSeal IS PROHIBITED.

TITLE
**SV-50 Rotor Flow and
Detent Disc
3-Position Options**

SIZE	REV
A	1
SHEET 6 OF 17	

Notes:

- Rotor and Detent Disc Part No.'s displayed



PROPRIETARY AND CONFIDENTIAL
 THE INFORMATION CONTAINED IN THIS DRAWING IS THE SOLE
 PROPERTY OF PacSeal.
 ANY REPRODUCTION IN PART OR AS A WHOLE WITHOUT THE
 WRITTEN PERMISSION OF PacSeal IS PROHIBITED.

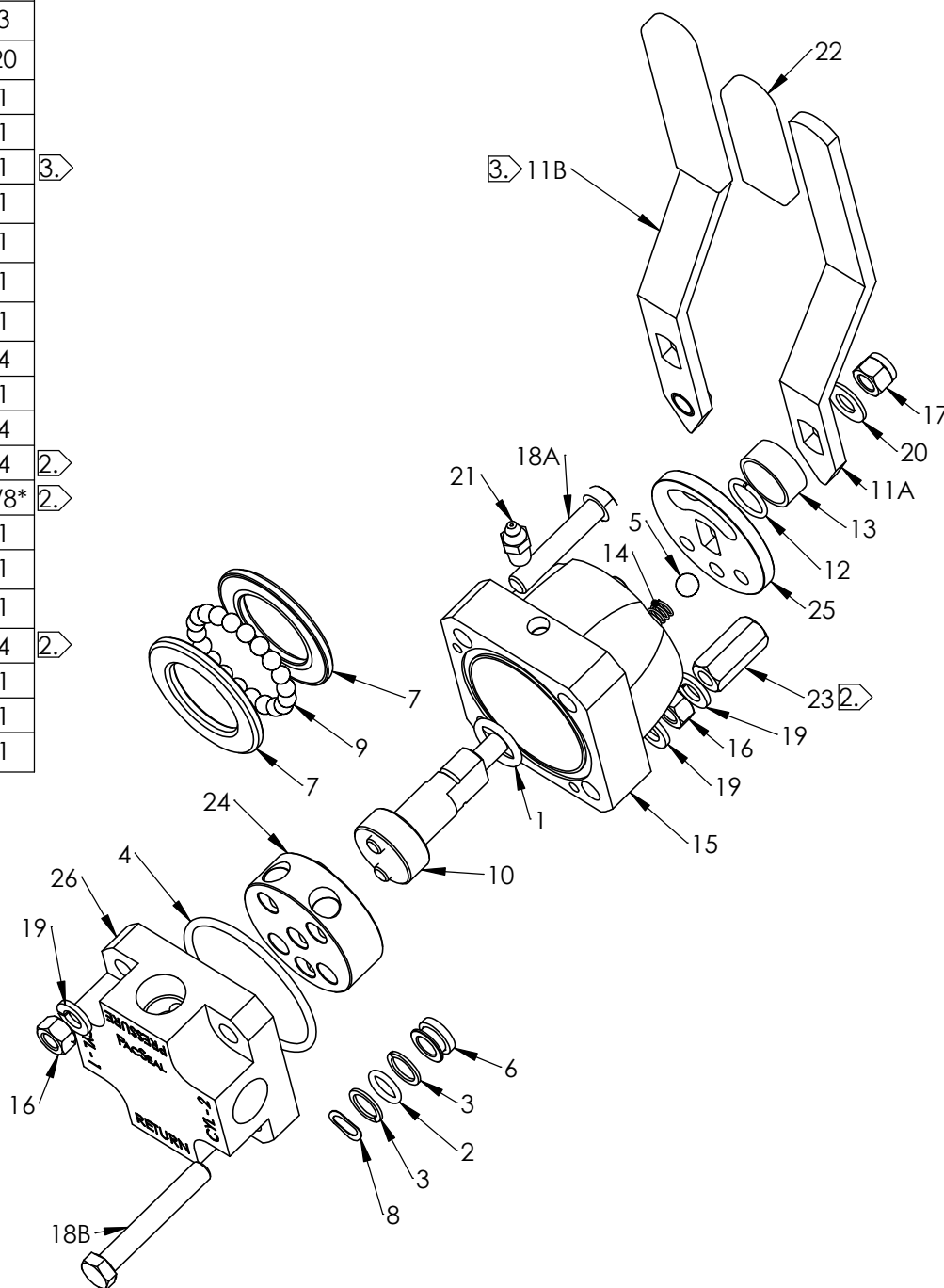
TITLE
**SV-50 Rotor Flow and
 Detent Disc
 2-Position Options**

SIZE A	REV 1
SHEET 7 OF 17	

ITEM NO.	PART NUMBER	DESCRIPTION	QTY.
1	23-1125	O-Ring	1
2	23-1337	O-Ring	3
3	23-1414	Backup Ring	6
4	23-1415	O-Ring	1
5	40-0049	Ball, Bearing	1
6	40-0219	Seal Ring	3
7	40-0227	Thrust Washer	2
8	40-0237	Wave Spring	3
9	40-0259	Ball, Bearing	20
10	40-0275	Shaft	1
11A	40-0280	Handle, SV-50	1
11B	40-0647	Handle, Remote	1
12	40-0289	Retaining Ring	1
13	40-0292	Spacer, Handle	1
14	40-0296	Spring	1
15	40-0353	Housing	1
16	50-0078	Hex Nut	4
17	50-0092	Locknut	1
18A	50-0098	Bolt	4
18B	50-0267	Bolt	4
19	50-0103	Lock Washer	4/8*
20	50-0107	Washer, Shaft	1
21	50-0176	Grease Fitting	1
22	50-0237	Grip, Handle	1
23	50-0461	Nut, Panel Mount	4
24	Note 4	Rotor	1
25	Note 4	Detent Disc	1
26	Note 5	Body	1

Notes:

1. Standard Inline Ported SV-50 shown for illustration purposes. (Refer to Model Configuration for options.)
2. Panel Mount Option.
3. Remote Handle Option
4. See sheets 6-7 "Rotor and Detent Shift Options" for replacement parts.
5. See sheet 9 "SV-50 Porting Options" for Body option part numbers.
6. See sheets 10-17 for other operator and actuator options.
7. Contact PacSeal for Viton or EPR O-rings.
8. Refer to SV-50 Maintenance Instructions for more details.



*Qty depends on Panel Mount vs. Standard Bolt Option

**PROPRIETARY AND CONFIDENTIAL**

THE INFORMATION CONTAINED IN THIS DRAWING IS THE SOLE PROPERTY OF PacSeal. ANY REPRODUCTION IN PART OR AS A WHOLE WITHOUT THE WRITTEN PERMISSION OF PacSeal IS PROHIBITED.

TITLE

SV-50
General Assembly
Overview

SIZE

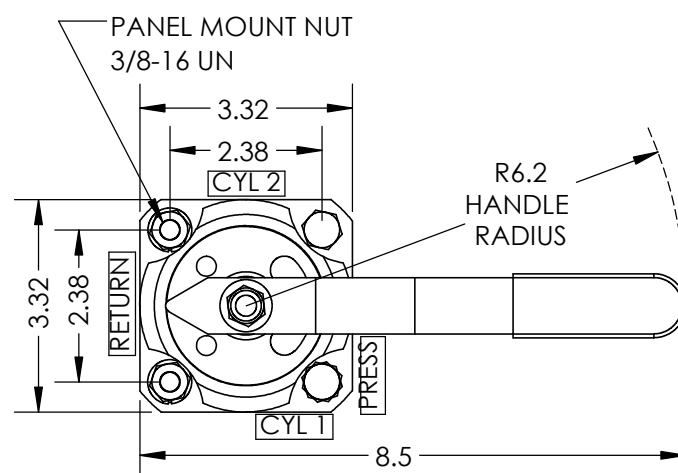
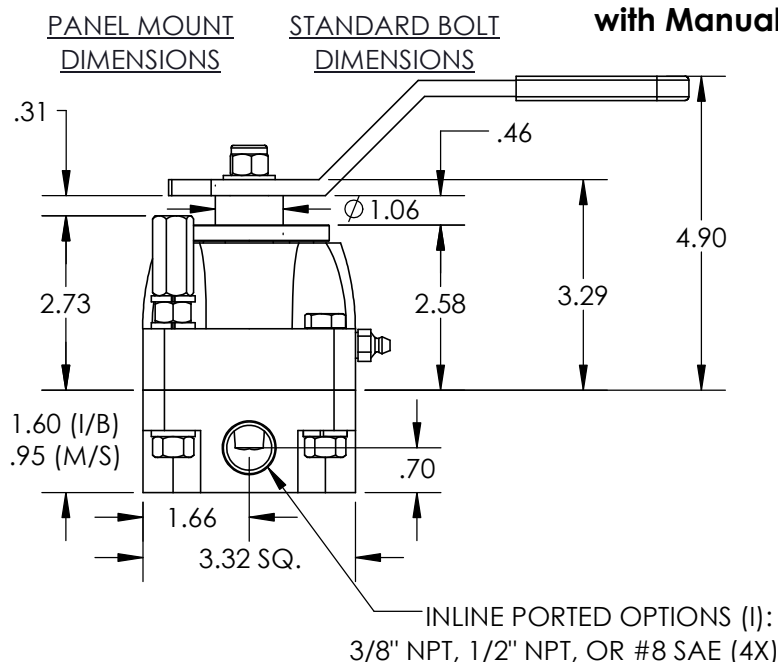
A

REV

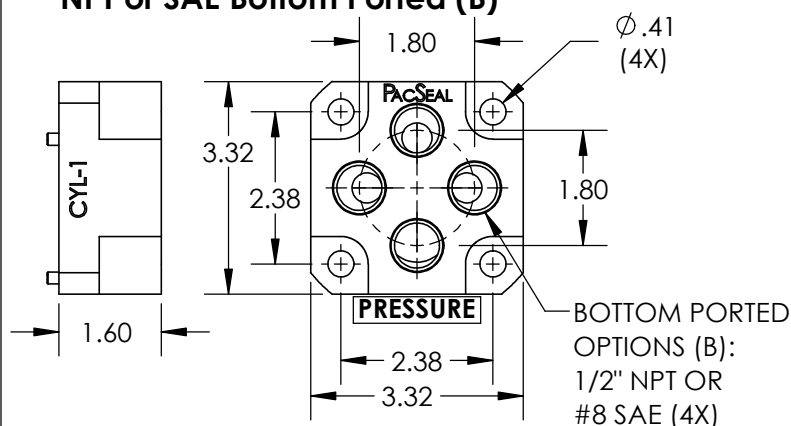
1

SHEET 8 OF 17

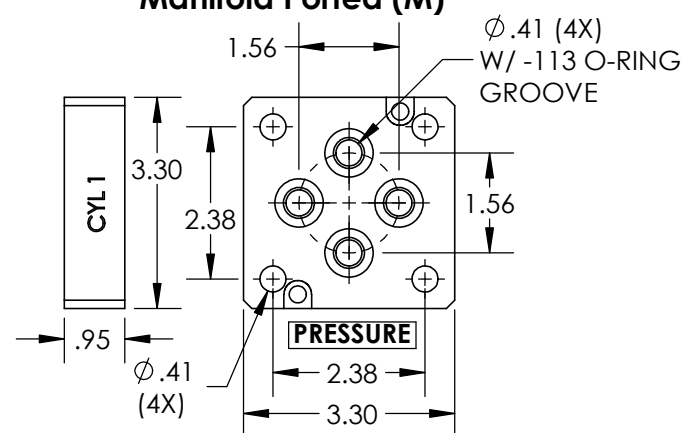
NPT or SAE Inline Ported (I) with Manual Operator



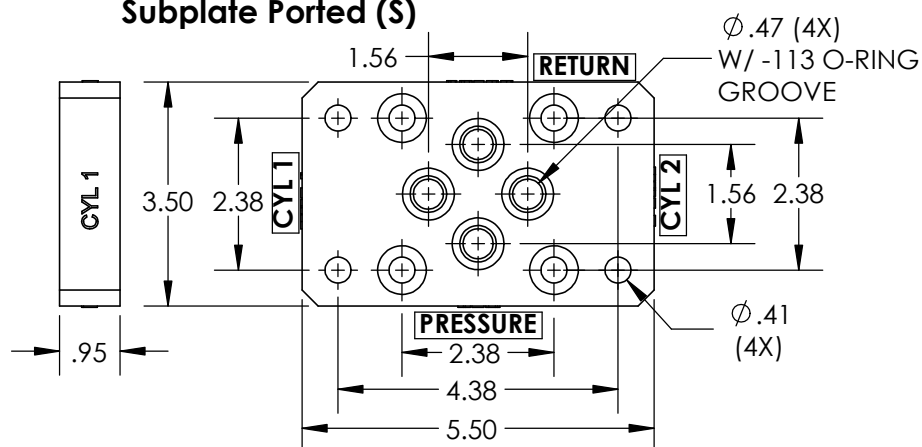
NPT or SAE Bottom Ported (B)



Manifold Ported (M)



Subplate Ported (S)



Body Option Part Numbers

Body Type	NPT Body Part No.	SAE Body Part No.
Inline [3/8"] (I)	40-1424	N/A
Inline [1/2"] (I)	40-1425	40-2237
Bottom (B)	40-1030	40-2328
Manifold (M)	40-1025	
Subplate (S)	40-3927	

Weight (lb.) of Manual Valve Porting Option

Inline (I)	9
Bottom (B)	9
Manifold (M)	8
Subplate (S)	11

PACSEAL →
← **HYDRAULICS**

PROPRIETARY AND CONFIDENTIAL

THE INFORMATION CONTAINED IN THIS DRAWING IS THE SOLE PROPERTY OF PacSeal. ANY REPRODUCTION IN PART OR AS A WHOLE WITHOUT THE WRITTEN PERMISSION OF PacSeal IS PROHIBITED.

TITLE
**SV-50 Porting Options
with Manual Operator
Installation Drawing**

SIZE
A

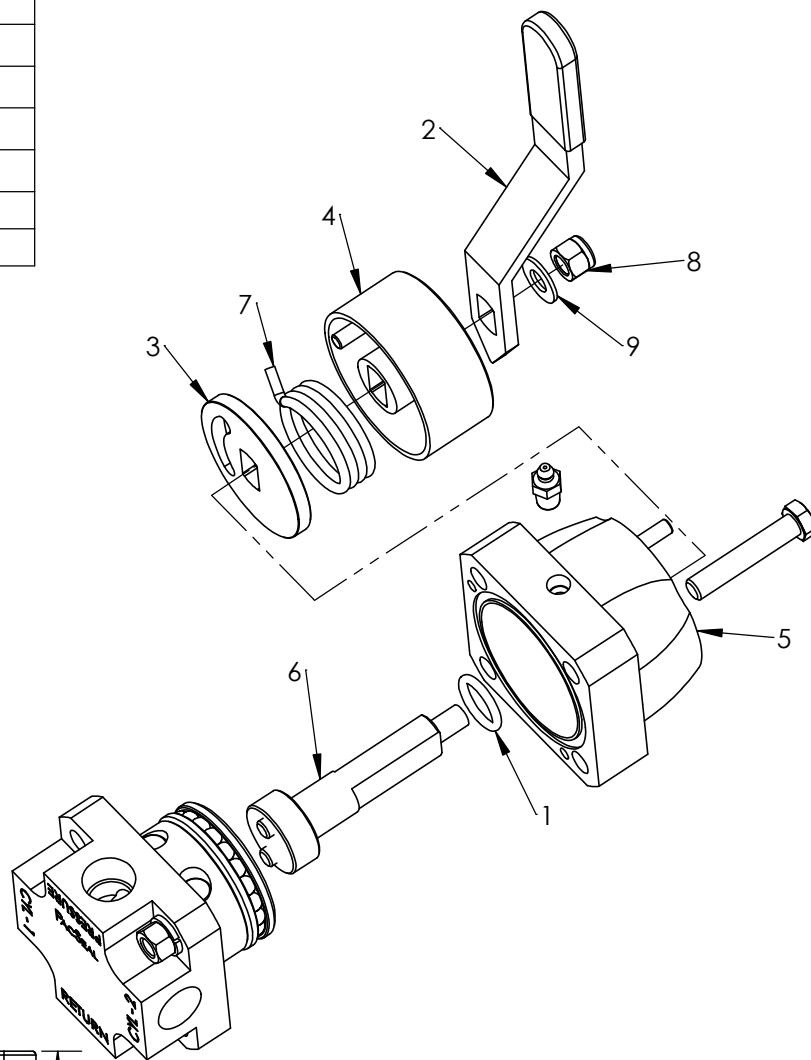
REV
1

SHEET 9 OF 17

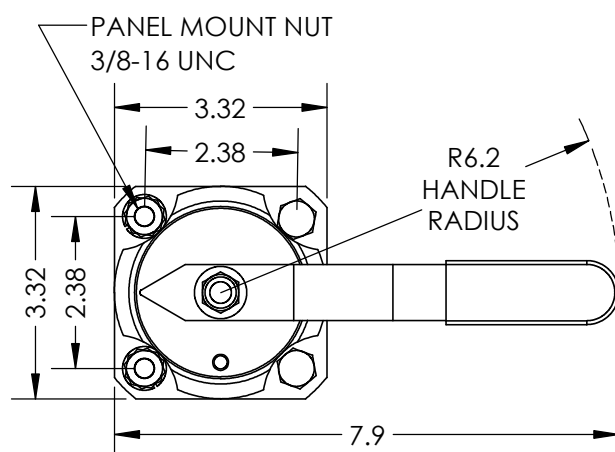
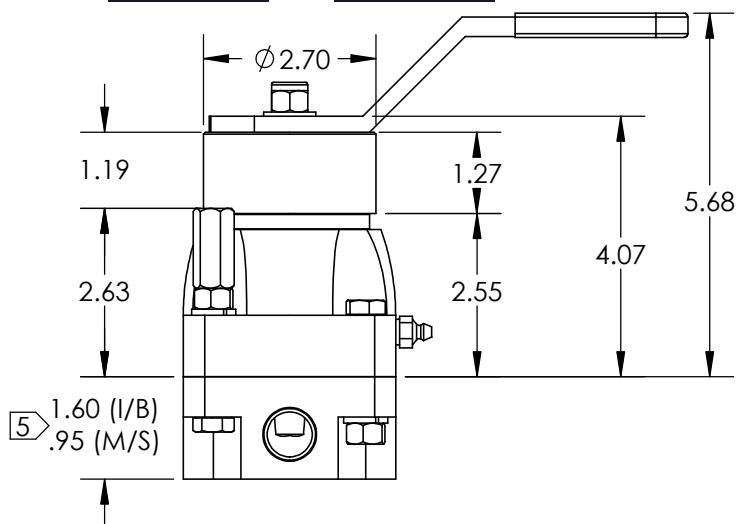
ITEM NO.	PART NUMBER	DESCRIPTION	QTY.
1	23-1125	O-ring	1
2	40-0280	Handle	1
3	40-4006	Detent Disc, Spring Centered	1
4	40-4007	Housing, Spring	1
5	40-4008	Housing	1
6	40-4011	Shaft, Spring Centered	1
7	40-4012	Torsion Spring, Spring Centered	1
8	50-0092	Locknut	1
9	50-0107	Washer, Shaft	1

Notes:

1. Spring Centered operator centers the rotor after manual shifting.
2. Retrofitting an existing valve is not an option.
3. Working Pressure (Liquid) - 3000 psi
4. Working Pressure (Gas) - 2000 psi
5. See "SV-50 Porting Options with Manual Operator Installation Drawing" (Sheet 9) for other porting details.



PANEL MOUNT DIMENSIONS STANDARD BOLT DIMENSIONS



Weight (lb.) of Manual Valve Porting Option

Inline (I)	11
Bottom (B)	11
Manifold (M)	10
Subplate (S)	13

**PROPRIETARY AND CONFIDENTIAL**

THE INFORMATION CONTAINED IN THIS DRAWING IS THE SOLE PROPERTY OF PacSeal. ANY REPRODUCTION IN PART OR AS A WHOLE WITHOUT THE WRITTEN PERMISSION OF PacSeal IS PROHIBITED.

TITLE SV-50 Spring Centered Operator Installation and Assembly Drawing

SIZE A

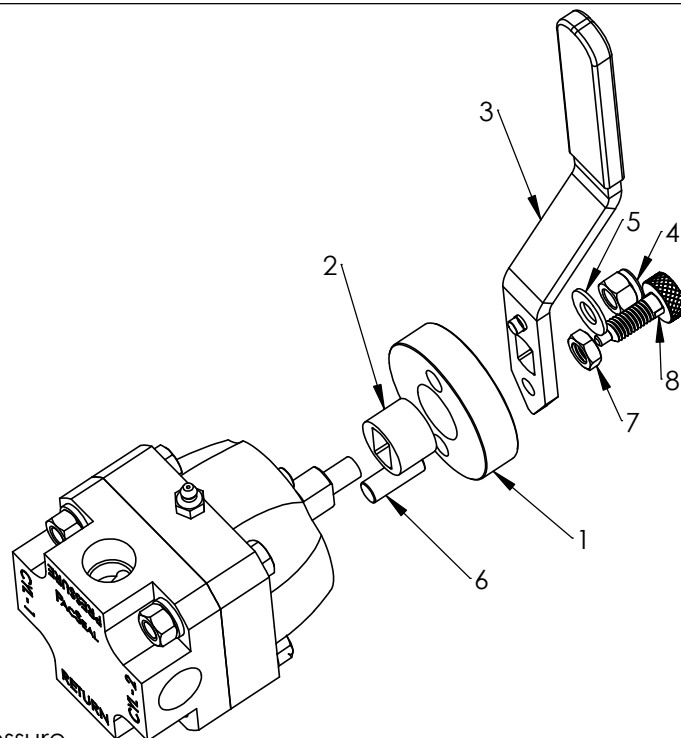
REV 1

SHEET 10 OF 17

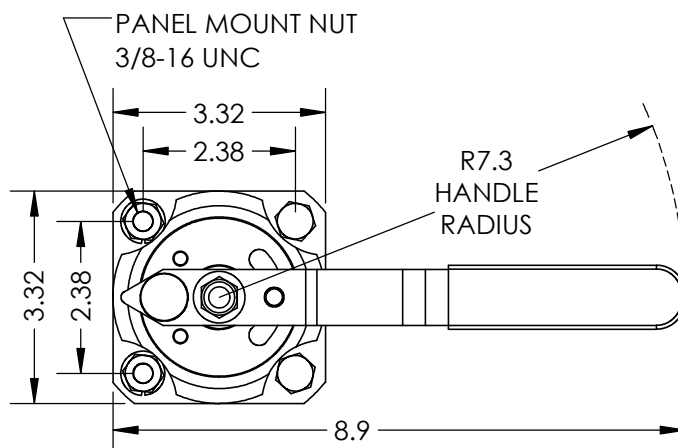
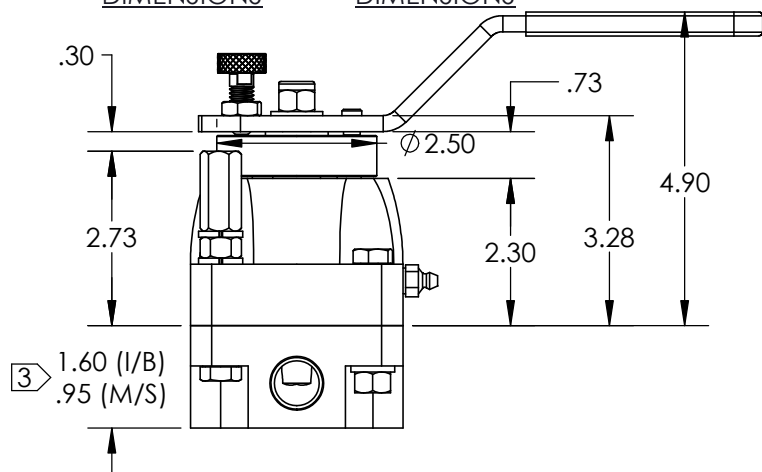
ITEM NO.	PART NUMBER	DESCRIPTION	QTY.
1	40-3725	Detent Plate	1
2	40-3727	Spacer	1
3	40-3738	Handle Ass'y	1
4	50-0092	Locknut	1
5	50-0107	Washer, Shaft	1
6	50-0329	Pin	1
7	50-0535	Hex Jam Nut	1
8	50-0536	Retractable Spring Plunger	1

Notes:

1. Pin Lock Detent operator prevents accidental shifting and ensures two-handed operation.
2. Can easily be retrofitted in field - reference P/N 40-3739 for Pin Lock Detent Kit.
3. See "SV-50 Porting Options with Manual Operator Installation Drawing" (Sheet 9) for other porting details.

**2 Conversion Instructions:**

1. Ensure that the valve is not receiving hydraulic pressure
2. Remove the existing Locknut, Washer, Handle, Detent Disc, Spring, and Ball
3. Add the Pin (6) to the empty hole
4. Align the Detent Plate (1) with the two pins to match the drawing
5. Insert the Spacer (2) into the Detent Plate (1)
6. Assemble the Handle (3) with its pin inside the slot
7. Add the Washer (5) then tighten the Locknut (4) to the Shaft
8. Thread the jam nut (7) to the top of the Retractable Spring Plunger (8)
9. Thread the Retractable Spring Plunger to the Handle until the plunger just makes contact with the bottom of the hole
10. Tighten the jam nut of the plunger to the handle
11. Dry test each position to ensure that the Retractable Spring Plunger is fully engaged in each hole

**PANEL MOUNT
DIMENSIONS****STANDARD BOLT
DIMENSIONS****Weight (lb.) of Manual
Valve Porting Option**

Inline (I)	10
Bottom (B)	10
Manifold (M)	9
Subplate (S)	12

**PROPRIETARY AND CONFIDENTIAL**

THE INFORMATION CONTAINED IN THIS DRAWING IS THE SOLE PROPERTY OF PacSeal. ANY REPRODUCTION IN PART OR AS A WHOLE WITHOUT THE WRITTEN PERMISSION OF PacSeal IS PROHIBITED.

TITLE SV-50
Pin Lock Detent
Operator Installation
and Assembly Drawing

SIZE
A

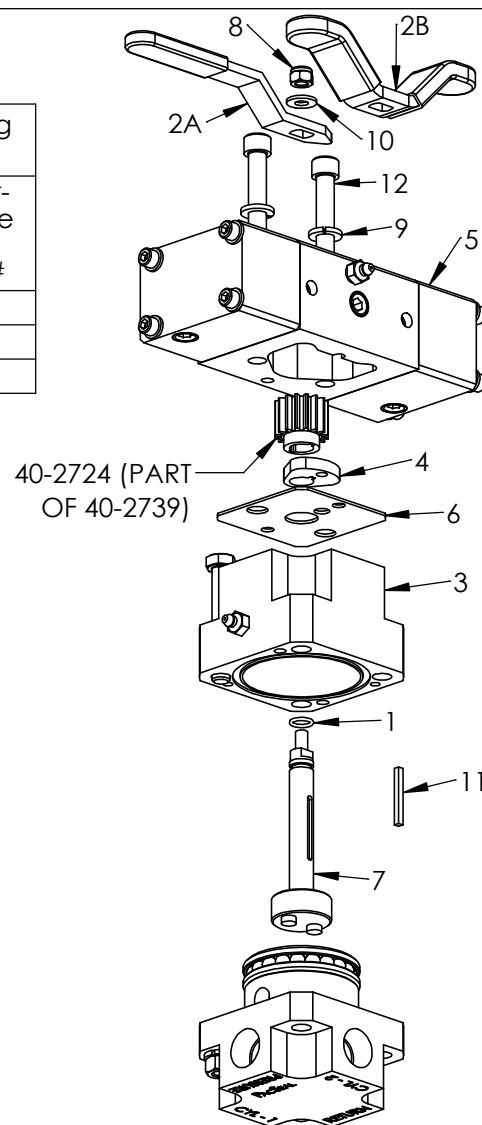
REV
1

SHEET 11 OF 17

ITEM NO.	PART NUMBER	DESCRIPTION	QTY.
1	23-1344	O-Ring	1
2A	40-0279	Straight Handle	1
2B	40-2803	Wing Handle	1
3	40-2626	Housing, SVx-50	1
4	40-2718	Detent, SVx-25	1
5	40-2739	Air Actuator Ass'y, SVx-50	1
6	40-2785	Aluminum Gasket	1
7	40-2786	Shaft, SVx-50	1
8	50-0091	Locknut	1
9	50-0103	Lock Washer	6
10	50-0106	Washer, Shaft	1
11	50-0444	Key	1
12	50-0527	Bolt	2

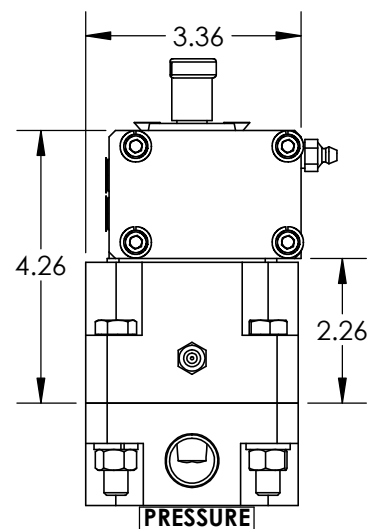
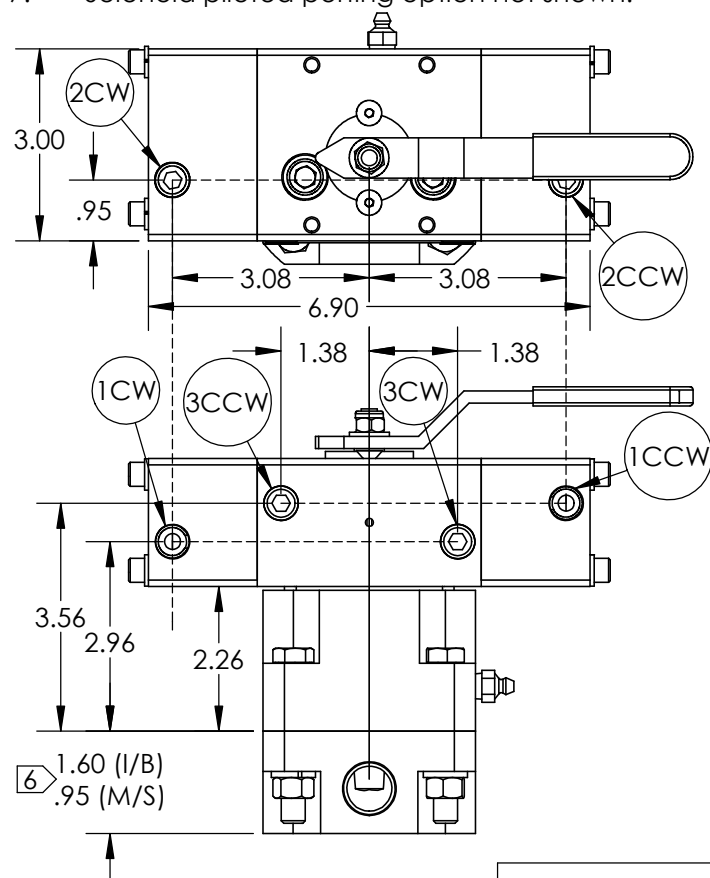
1/4 NPT Air Inlet Porting Location Options

Clockwise (CW) Option #	Counter-Clockwise (CCW) Option #
1CW	1CCW
2CW	2CCW
3CW	3CCW



Notes:

- Model displays SVX with 2-Position 90° Direct Air actuation.
- Center (3rd) position is accomplished with manual override.
- Air Actuator working pressure - 80 to 150 psi
- Actuator material - Aluminum (anodized)
- Retrofitting an existing valve is not an option.
- See "SV-50 Porting Options with Manual Operator Installation Drawing" (Sheet 9) for other porting details.
- Solenoid piloted porting option not shown.



Weight (lb.) of Manual Valve Porting Option

Inline (I)	13
Bottom (B)	13
Manifold (M)	12
Subplate (S)	15

PACSEAL →
← **HYDRAULICS**

PROPRIETARY AND CONFIDENTIAL

THE INFORMATION CONTAINED IN THIS DRAWING IS THE SOLE PROPERTY OF PacSeal. ANY REPRODUCTION IN PART OR AS A WHOLE WITHOUT THE WRITTEN PERMISSION OF PacSeal IS PROHIBITED.

TITLE **SVX-50 2-Position 90° Direct Air Actuation Installation and Assembly Drawing**

SIZE **A**

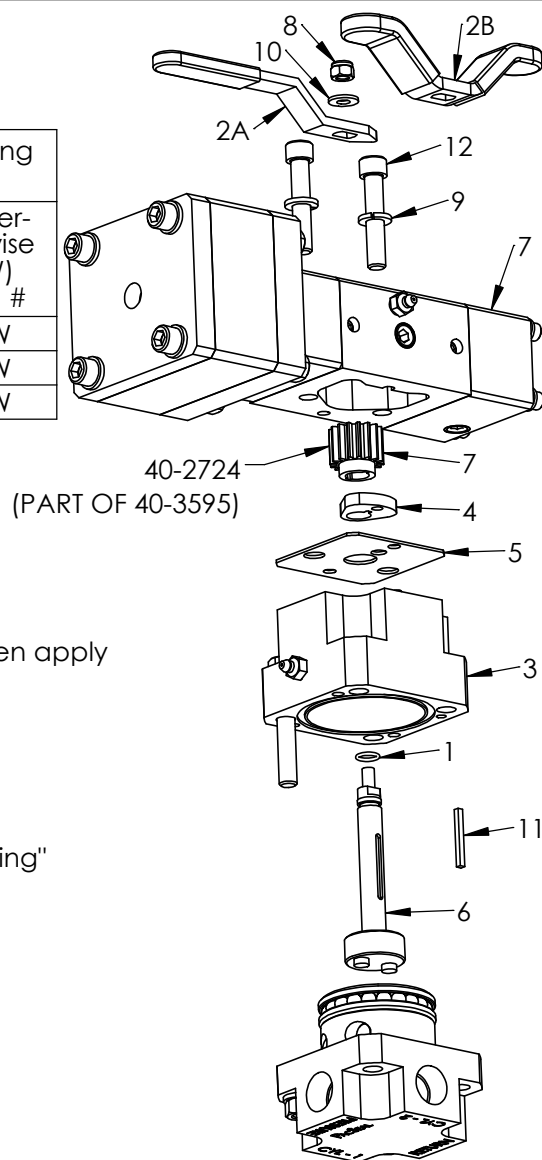
REV **1**

SHEET 12 OF 17

ITEM NO.	PART NUMBER	DESCRIPTION	QTY.
1	23-1344	O-Ring	1
2A	40-0279	Straight Handle	1
2B	40-2803	Wing Handle	1
3	40-2626	Housing, SVx-50	1
4	40-2718	Detent, SVx-25	1
5	40-2785	Aluminum Gasket	1
6	40-2786	Shaft, SVx-50	1
7	40-3595	3-Position Air Actuator, SVx-50	1
8	50-0091	Locknut	1
9	50-0103	Lock Washer	6
10	50-0106	Washer, Shaft	1
11	50-0444	Key	1
12	50-0527	Bolt	2

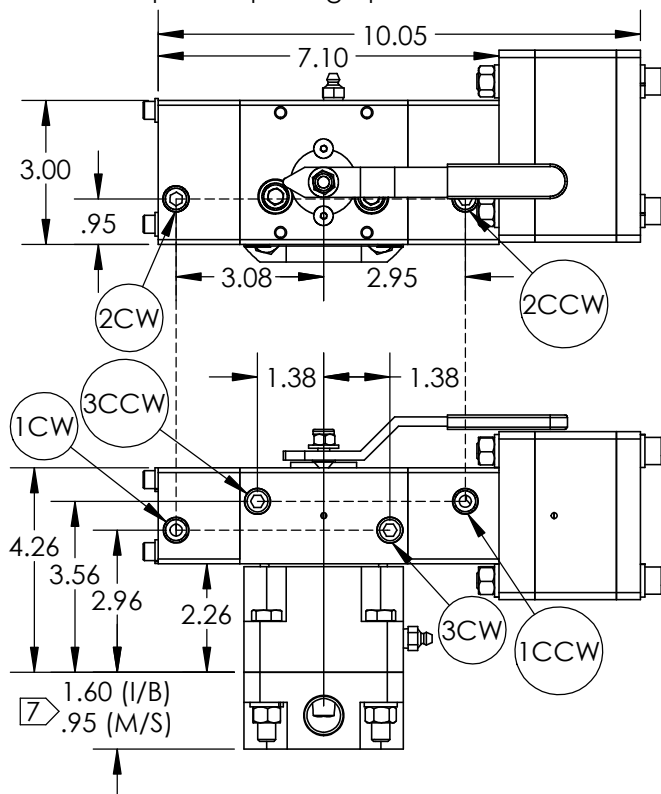
1/4 NPT Air Inlet Porting Location Options

Clockwise (CW) Option #	Counter-Clockwise (CCW) Option #
1CW	1CCW
2CW	2CCW
3CW	3CCW

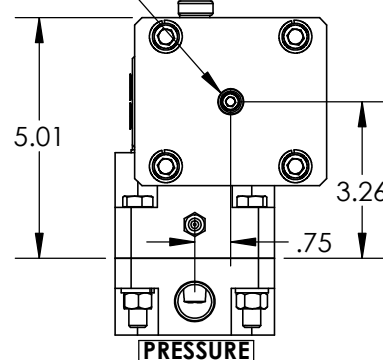


Notes:

- Model displays SVX with 3-Position 90° Direct Air actuation.
- For center position, first apply air pressure to "CENTERING PORT", then apply air pressure to a "CW" port.
- For 2-position operation, apply air to "CW" and "CCW" ports only.
- Air Actuator working pressure - 80 to 150 psi
- Actuator material - Aluminum (anodized)
- Retrofitting an existing valve is not an option.
- See "SV-50 Porting Options with Manual Operator Installation Drawing" (Sheet 9) for other porting details.
- Solenoid piloted porting option not shown.



③ 1/4 NPT
CENTERING
PORT



Weight (lb.) of Manual Valve Porting Option

Inline (I)	18
Bottom (B)	18
Manifold (M)	17
Subplate (S)	15

PACSEAL →
← **HYDRAULICS**

PROPRIETARY AND CONFIDENTIAL

THE INFORMATION CONTAINED IN THIS DRAWING IS THE SOLE PROPERTY OF PacSeal. ANY REPRODUCTION IN PART OR AS A WHOLE WITHOUT THE WRITTEN PERMISSION OF PacSeal IS PROHIBITED.

TITLE **SVX-50 3-Position 90° Direct Air Actuation Installation and Assembly Drawing**

SIZE **A**

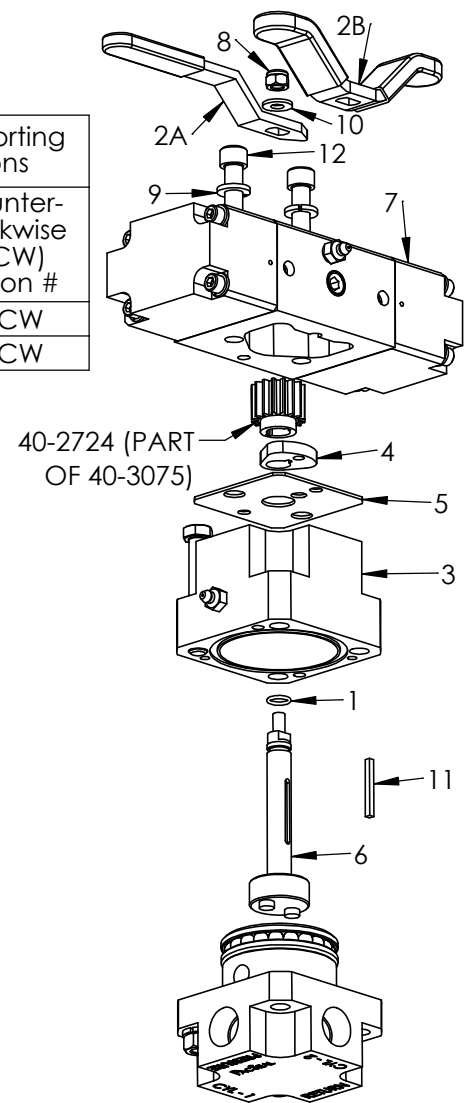
REV **1**

SHEET 13 OF 17

ITEM NO.	PART NUMBER	DESCRIPTION	QTY.
1	23-1344	O-Ring	1
2A	40-0279	Straight Handle	1
2B	40-2803	Wing Handle	1
3	40-2626	Housing, SVx-50	1
4	40-2718	Detent, SVx-25	1
5	40-2785	Aluminum Gasket	1
6	40-2786	Shaft, SVx-50	1
7	40-3075	Hydraulic Actuator Ass'y, SVx-50	1
8	50-0091	Locknut	1
9	50-0103	Lock Washer	6
10	50-0106	Washer, Shaft	1
11	50-0444	Key	1
12	50-0527	Bolt	2

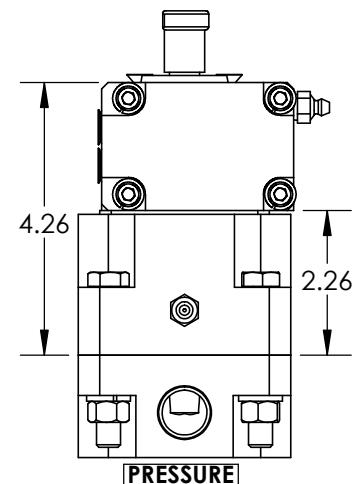
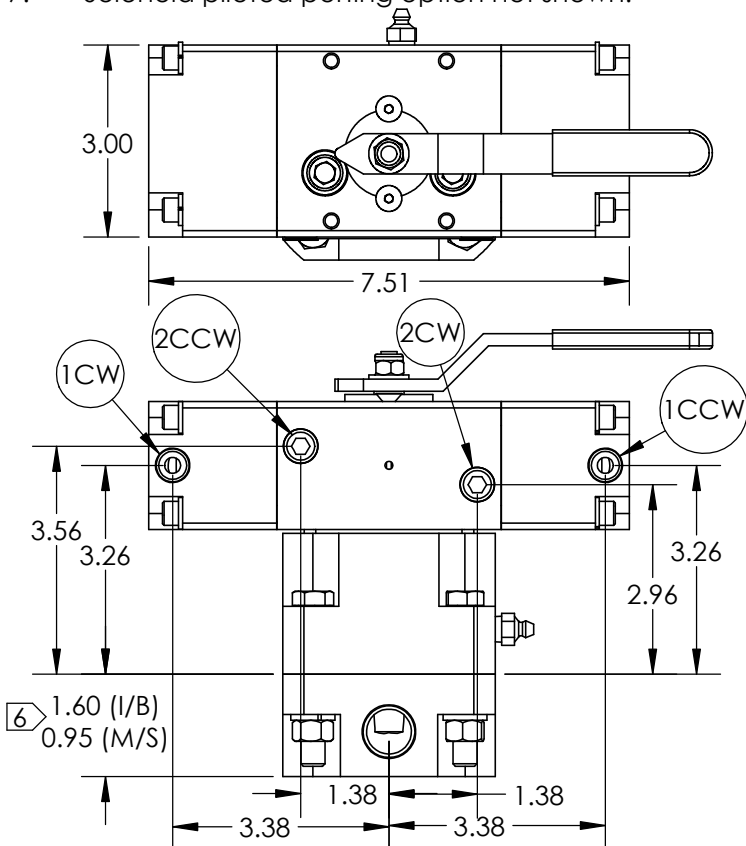
1/4 NPT Air Inlet Porting Location Options

Clockwise (CW) Option #	Counter-Clockwise (CCW) Option #
1CW	1CCW
2CW	2CCW



Notes:

- Model displays SVX with 2-Position 90° Direct Hydraulic actuation.
- Center (3rd) position is accomplished with manual override.
- Retrofitting an existing valve is not an option.
- Hydraulic Actuator working pressure - 800 to 1500 psi
- Actuator material - Aluminum (anodized)
- See "SV-50 Porting Options with Manual Operator Installation Drawing" (Sheet 9) for other porting details.
- Solenoid piloted porting option not shown.



Weight (lb.) of Manual Valve Porting Option

Inline (I)	14
Bottom (B)	14
Manifold (M)	13
Subplate (S)	16

PACSEAL →
← **HYDRAULICS**

PROPRIETARY AND CONFIDENTIAL

THE INFORMATION CONTAINED IN THIS DRAWING IS THE SOLE PROPERTY OF PacSeal. ANY REPRODUCTION IN PART OR AS A WHOLE WITHOUT THE WRITTEN PERMISSION OF PacSeal IS PROHIBITED.

TITLE **SVX-50 2-Position 90° Direct Hydraulic Actuation Installation and Assembly Drawing**

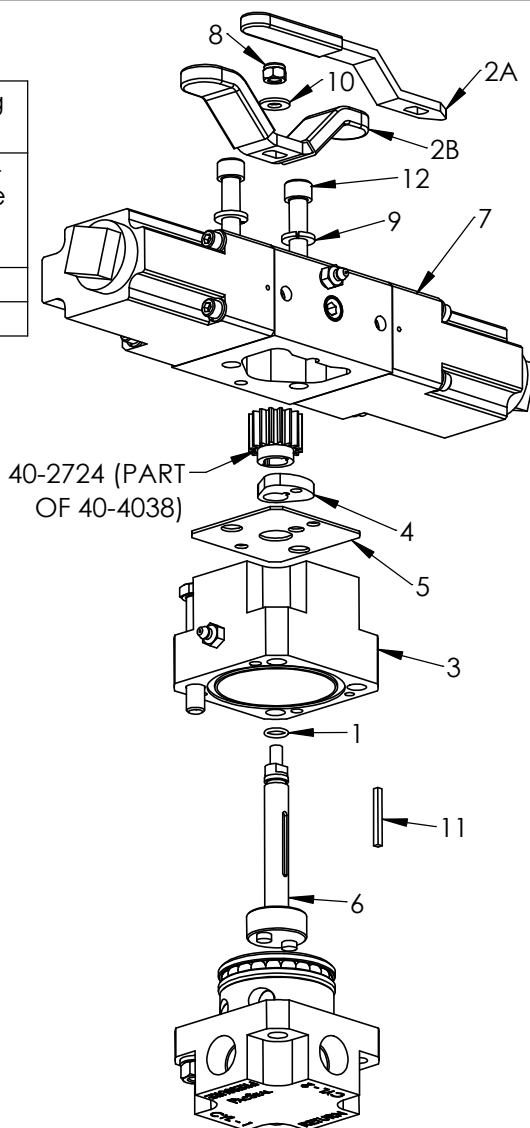
SIZE **A**

REV **1**

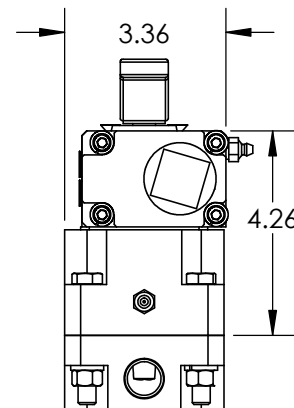
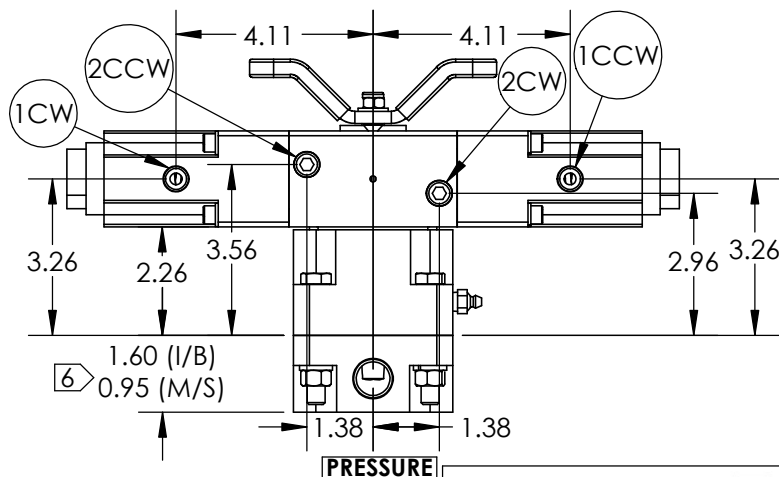
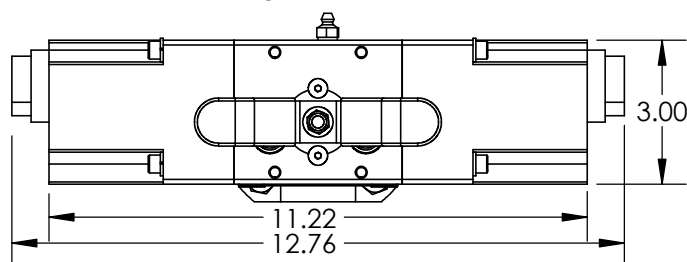
SHEET 14 OF 17

ITEM NO.	PART NUMBER	DESCRIPTION	QTY.
1	23-1344	O-Ring	1
2A	40-0279	Straight Handle	1
2B	40-2803	Wing Handle	1
3	40-2626	Housing, SVx-50	1
4	40-2718	Detent, SVx-25	1
5	40-2785	Aluminum Gasket	1
6	40-2786	Shaft, SVx-50	1
7	40-4038	Hydraulic Spring Centered Actuator Ass'y, SVx- 50	1
8	50-0091	Locknut	1
9	50-0103	Lock Washer	6
10	50-0106	Washer, Shaft	1
11	50-0444	Key	1
12	50-0527	Bolt	2

1/4 NPT Air Inlet Porting Location Options	
Clockwise (CW) Option #	Counter-Clockwise (CCW) Option #
1CW	1CCW
2CW	2CCW

**Notes:**

- Model displays SVX with 3-Position 90° Spring Centered Direct Hydraulic actuation.
- Center (3rd) position is accomplished when hydraulic pilot pressure is relieved.
- Hydraulic Actuator working pressure - 800 to 1500 psi
- Actuator material - Aluminum (anodized)
- Retrofitting an existing valve is not an option.
- See "SV-50 Porting Options with Manual Operator Installation Drawing" (Sheet 9) for other porting details.
- Solenoid piloted porting option not shown.



Weight (lb.) of Manual Valve Porting Option	
Inline (I)	16
Bottom (B)	16
Manifold (M)	15
Subplate (S)	18

PACSEAL →
← **HYDRAULICS**

PROPRIETARY AND CONFIDENTIAL
THE INFORMATION CONTAINED IN THIS DRAWING IS THE SOLE PROPERTY OF PacSeal.
ANY REPRODUCTION IN PART OR AS A WHOLE WITHOUT THE WRITTEN PERMISSION OF PacSeal IS PROHIBITED.

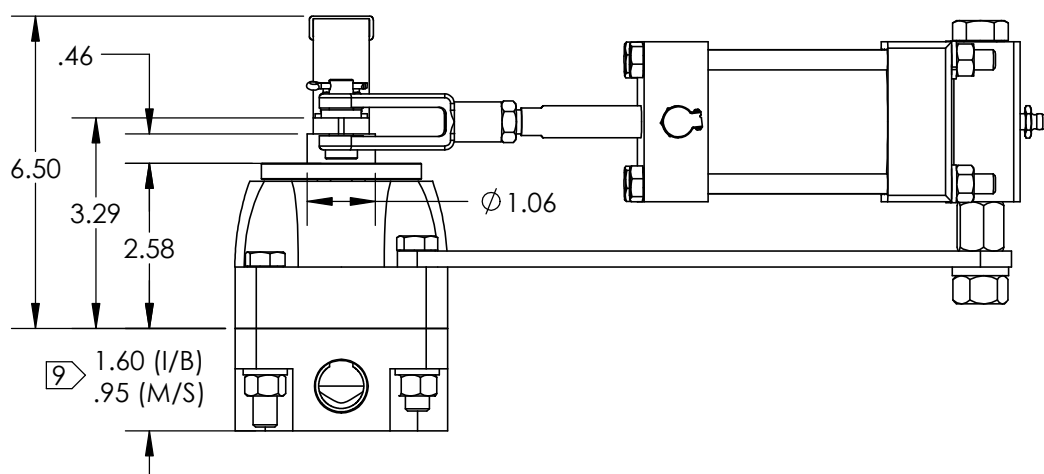
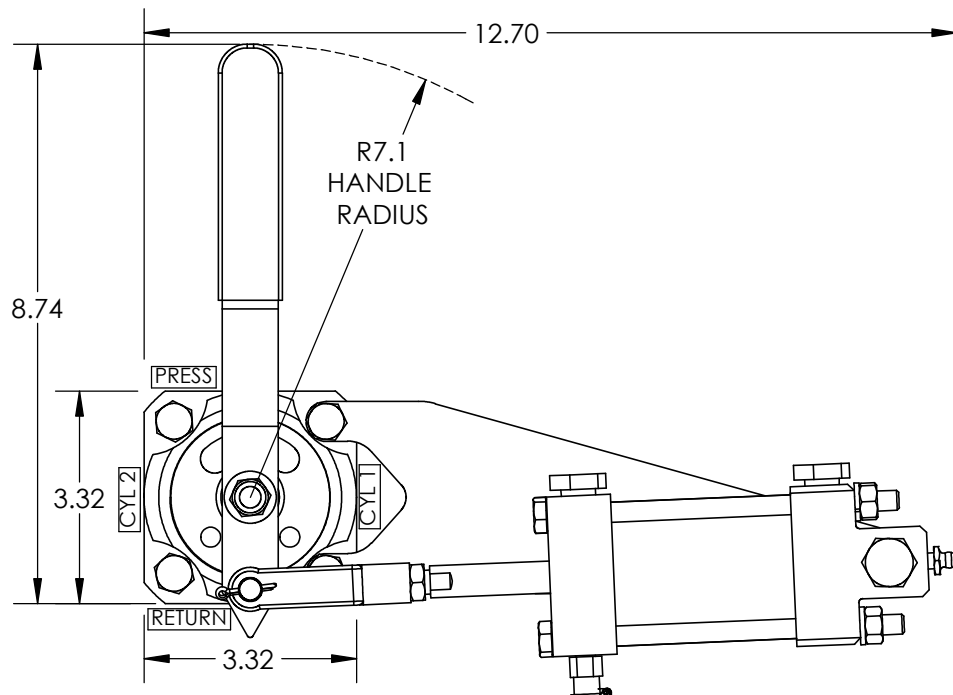
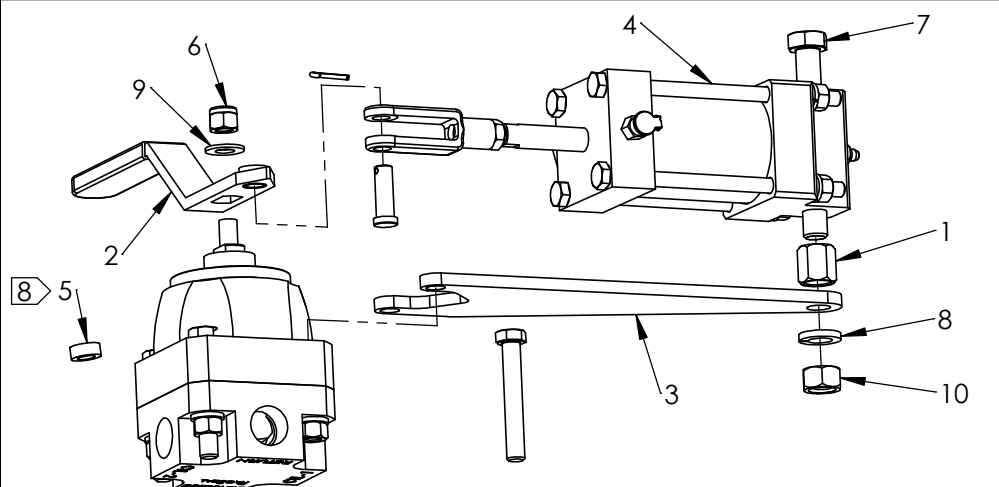
TITLE SVX-50 3-Position 90° Spring Centered Direct Hydraulic Actuation Installation and Assembly Drawing

SIZE A **REV** 1
SHEET 15 OF 17

ITEM NO.	PART NUMBER	DESCRIPTION	QTY.
1	40-0558	Spacer Nut	1
2	40-0647	Handle, Remote	1
3	40-1441	Air Cylinder Bracket	1
4	40-1606	Air Actuator Cylinder Assembly, AAC-202	1
5	40-2616	Spacer	1
6	50-0092	Locknut	1
7	50-0100	Bolt	1
8	50-0104	Lock Washer	1
9	50-0107	Washer, Shaft	1
10	50-0110	Hex Nut	1

Notes:

- Model displays Right Mounted Air Cylinder Actuator
- Cylinder Positions - 2
- Cylinder Air working pressure - 80 to 150 psi
- Cylinder Rating - 250 psi
- Cylinder Stroke - 2.13 in.
- Cylinder Bore/Rod - 2 X 1/2 in.
- Actuator Material - Aluminum (anodized)
- Spacer is only necessary if a name plate is used.
- See "SV-50 Porting Options with Manual Operator Installation Drawing" (Sheet 9) for installation dimensions of other porting options.

**Weight (lb.) of Manual Valve Porting Option**

Inline (I)	17
Bottom (B)	17
Manifold (M)	16
Subplate (S)	19

PACSEAL →
← **HYDRAULICS**

PROPRIETARY AND CONFIDENTIAL

THE INFORMATION CONTAINED IN THIS DRAWING IS THE SOLE PROPERTY OF PacSeal. ANY REPRODUCTION IN PART OR AS A WHOLE WITHOUT THE WRITTEN PERMISSION OF PacSeal IS PROHIBITED.

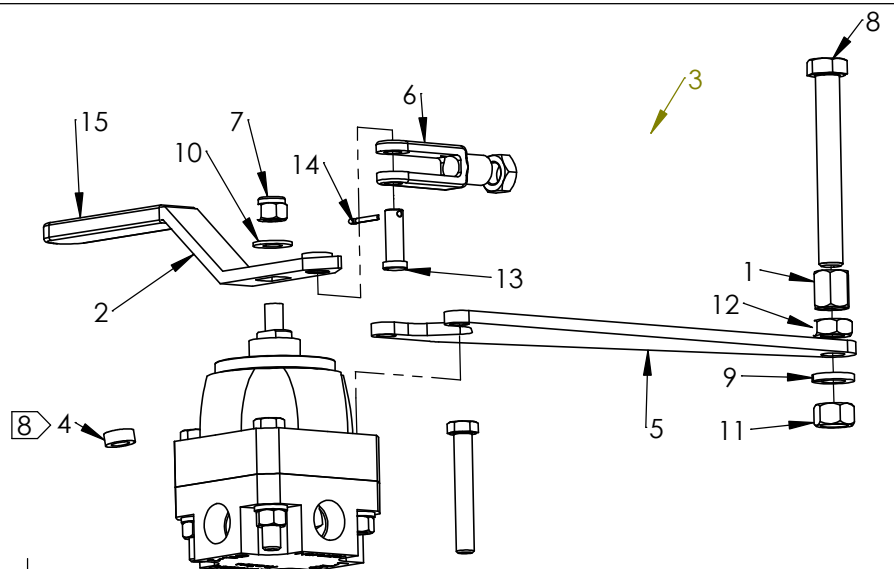
TITLE
**SV-50 Air Cylinder
Actuator Installation
and Assembly Drawing**

SIZE
A

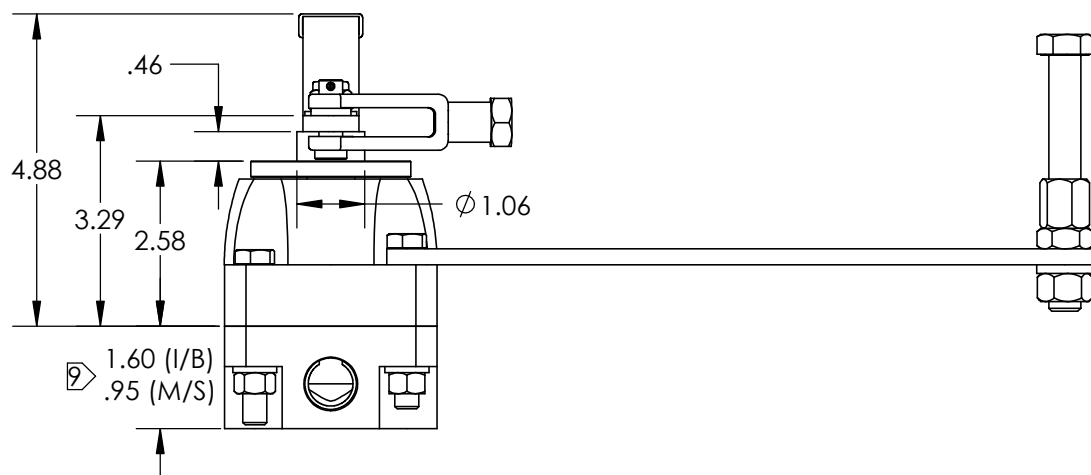
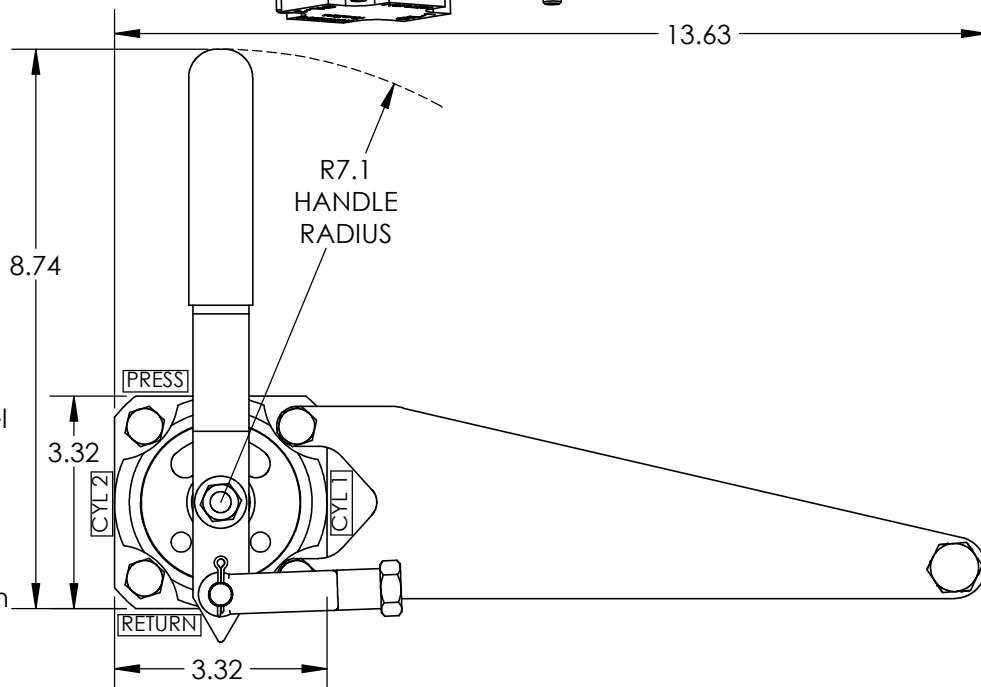
REV
1

SHEET 16 OF 17

ITEM NO.	PART NUMBER	DESCRIPTION	QTY.
1	40-0558	Spacer Nut	1
2	40-0647	Handle, Remote	1
4	40-2616	Spacer	1
5	40-3649	Bracket, Hydraulic	1
6	40-3650	Clevis, Hydraulic	1
7	50-0092	Locknut	1
8	50-0100	Bolt	1
9	50-0104	Lock Washer	1
10	50-0107	Washer, Shaft	1
11	50-0110	Hex Nut	1
12	50-0163	Hex Jam Nut	1
13	50-0195	Clevis Pin	1
14	50-0196	Cotter Pin	1
15	50-0237	Grip, Handle	1
16	50-0394	Jam Nut	1

**Notes:**

- Model displays Right Mounted Air Cylinder Actuator
- Cylinder Positions - 2
- Cylinder Air working pressure - 500 to 1200 psi
- Cylinder Rating - 1500 psi
- Cylinder Stroke - 2.13 in.
- Cylinder Bore/Rod - 2 X 1/2 in.
- Actuator Material - Carbon Steel
- Spacer is only necessary if a name plate is used.
- See "SV-50 Porting Options with Manual Operator Installation Drawing" (Sheet 9) for installation dimensions of other porting options.



Weight (lb.) of Manual Valve Porting Option

Inline (I)	17
Bottom (B)	17
Manifold (M)	16
Subplate (S)	19

PACSEAL →
← **HYDRAULICS**

PROPRIETARY AND CONFIDENTIAL

THE INFORMATION CONTAINED IN THIS DRAWING IS THE SOLE PROPERTY OF PacSeal.
ANY REPRODUCTION IN PART OR AS A WHOLE WITHOUT THE WRITTEN PERMISSION OF PacSeal IS PROHIBITED.

**TITLE SV-50 Hydraulic
Cylinder Actuator
Installation and
Assembly Drawing**

**SIZE
A**

**REV
1**

SHEET 17 OF 17