



KR-75 Regulator Specifications Table of Contents

2. Specifications and Data Sheet
3. Configuration Overview
4. Regulator with Manual Operator Installation Drawing
5. Regulator with Failsafe Air Operator Installation Drawing
6. Regulator with Failsafe Hydraulic Operator Installation Drawing
7. Regulator with Hydraulic Pilot Operator Installation Drawing
8. Subplate Mount Regulator Installation Drawing
9. High Pressure Output Regulator with Manual Operator Installation Drawing
10. High Pressure Output Regulator with High Torque Failsafe Air Operator Installation Drawing
11. High Pressure Output Regulator with Failsafe Hydraulic Operator Installation Drawing
12. Internal Override Bypass Options Installation Drawing
13. General Assembly Overview
14. L and H Model Configurations Assembly Drawing
15. R and V Model Configurations Assembly Drawing
16. D and W Model Configurations Assembly Drawing
17. P Model Configuration Assembly Drawing
18. Failsafe Air and Hydraulic Operators Assembly Drawing
19. High Pressure Output Adjustment Head Assembly Drawing
20. High Pressure Output Manual Operator Assembly Drawing
21. High Pressure Output Failsafe Air Operator Assembly Drawing
22. High Pressure Output Failsafe Hydraulic Operator Assembly Drawing
23. Internal Override Bypass Direct Operation Assembly Drawing
24. Internal Override Bypass with SV-25 Assembly Drawing
25. Internal Override Bypass with SVx-25 Assembly Drawing



All PacSeal Hydraulics' KR Pressure Regulators are designed with ShearFlo® metal-to-metal sealing technology.

ShearFlo® sealing technology features:

- High cycle life and anti-wear design is suitable for critical service applications, including contaminated fluids.
- Leak proof, contaminant resistant metal-to-metal seal is accomplished by lapping and polishing hardened stainless steel sealing elements to exacting standards of finish and flatness.
- The sealing elements are spring preloaded and pressure energized, which maintains contact between the two sealing surfaces at all times.

All KR Regulators are tested to PacSeal's strict quality control standards to ensure proper function and reliability. Every ShearFlo® sealing component in a repair kit is inspected to ensure trouble-free performance after field maintenance and repair.

PacSeal Hydraulics' KR Pressure Regulators serve as pressure reducing and regulating valves to maintain system pressure at a desired value (set pressure) which is below that of the supply pressure.

The operator controls the outlet pressure by modulating the compression of springs that act on a pressurized piston. This in turn balances the hydraulic load inside the body. The operator options are as follows:

- Manual
- Failsafe Air Motor with Manual Override
- Failsafe Hydraulic Motor with Manual Override
- Hydraulic Pilot

The internal override bypass operator provides a lean solution for tight space applications by allowing full accumulator pressure to be supplied downstream of the regulator without a dedicated 4-way bypass valve in the hydraulic circuit.

General Specifications	
Supply Port Size	1 in. NPT or SAE ORB (2X)
Outlet Port Size	1 in. NPT or SAE ORB
Vent Port Size	1/2 in. NPT or SAE ORB
Working Pressure Options (Liquid)	3000, 5000, or 6000 psi
Regulated Outlet Pressure Options	See Product Configurator
Cv Factor Outlet	9.4
Cv Factor Vent	1.4
Rated Flow	75 gpm
Temperature Rating (Regulators and Failsafe Air Motors)	-40° to 250°F
Fluid Media	Hydraulic oil or lubricated water ¹
Weight	See installation drawings

Materials	
ShearFlo Sealing Components (i.e. Rotor and Seal Rings)	400 series hardened stainless steel ¹
Body	400 series stainless steel
Flanges and Operators	Carbon Steel
Hardware	Coated Carbon Steel
O-rings	Buna-N (N), Viton (V), or EPR (E)
Backup Rings	Teflon

¹For water based media, special alloy seal rings may be required for optimum performance and durability - Contact PacSeal for details.

Model	Supply Pressure [psi]	Regulated Outlet Pressure [psi]	Deadband Range [psi]*
L	3000/5000	200-2000	85-150
R	3000/5000	550-2500	300-600
H	5000/6000	350-3300	85-150
D	5000/6000	400-4000	150-250
V	6000	1200-5500	450-800
W	6000	600-5000	150-250
P	3000/5000/6000	50-6000	0-100

*Deadband is the difference between the set pressure and the actual outlet pressure that triggers the KR to open or vent. The deadband will vary depending on factors that influence the friction between the seal rings and flow plates, such as: type of fluid and lubricity properties, temperature, differential pressure between supply and regulated outlet, seal ring and flow plate wear condition, and lastly interpretation influenced by gauge sensitivity. The Reset Range or Hysteresis is within +/- 150 psi for all models.

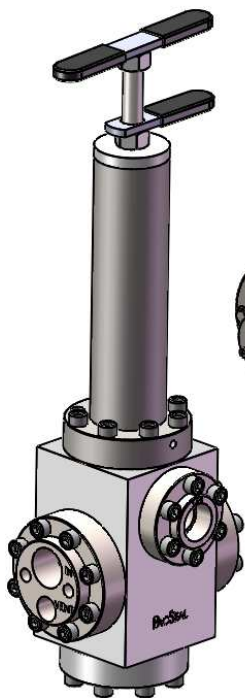
Model Number Configurator

Basic Model	Ports	Supply Pressure	Regulated Outlet Pressure		Operator	Internal Override Bypass
			Rated Range ²	Deadband		
N NPT		3 3000 psi	L 200-2000 psi	85-150 psi	M Manual	-IO Direct
S SAE		5 5000 psi	R 550-2500 psi	300-600 psi	FSA Failsafe Air Motor	-IS with SV-25
M Subplate Mount (NPT)		5 5000 psi	H 350-3300 psi	85-150 psi	FSH Failsafe Hydraulic Motor	-IX with SVx-25
KR-75 T Subplate Mount (SAE) ¹		6 6000 psi	D 400-4000 psi	150-250 psi		
C Code-61 ¹		6 6000 psi	W 600-5000 psi	150-250 psi		Leave blank if N/A
D Code-62 ¹			V 1200-5500 psi	450-800 psi		
		3, 5, or 6	P³ 50-6000 psi	0-100 psi	H Hydraulic Pilot	

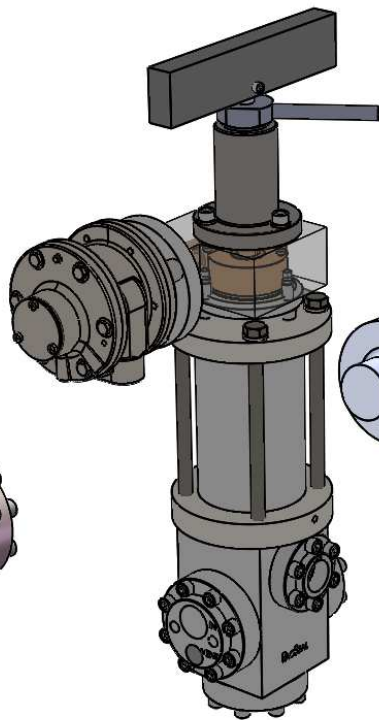
Notes: ¹ Not a standard option - special order only

² Rated Regulated Outlet Pressure cannot exceed supply pressure. Absolute Outlet Pressure is 0 psi up to 25% above the maximum operating pressure.

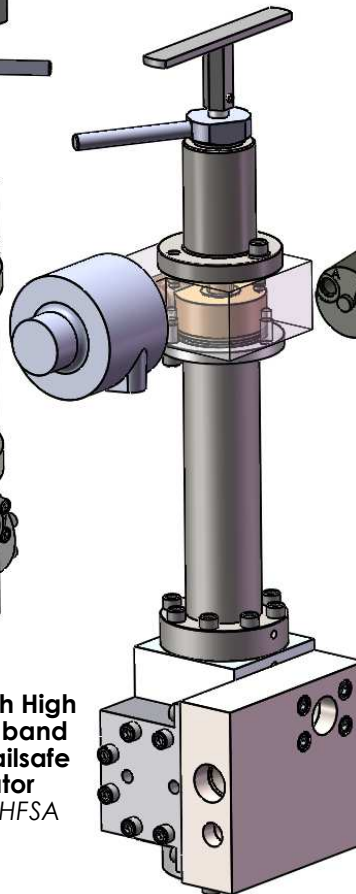
³ Maximum rated regulated outlet pressure matches the supply pressure for a regulator with the Hydraulic Pilot operator



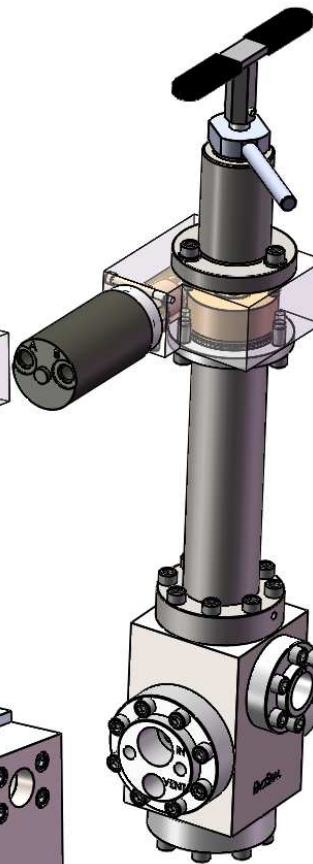
KR-75 Regulator with Standard Ports (NPT/SAE) and Manual Operator
Example: KR-75N3LM



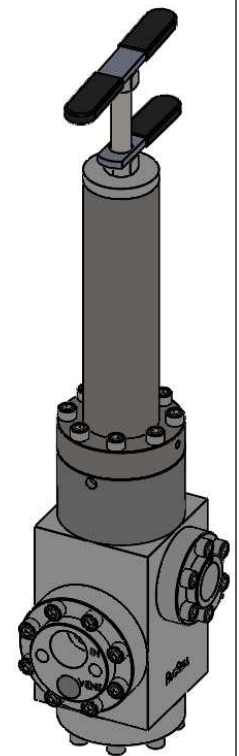
KR-75 Regulator with High Pressure Low Deadband and High Torque Failsafe Air Motor Operator
Example: KR-75N3HFSA



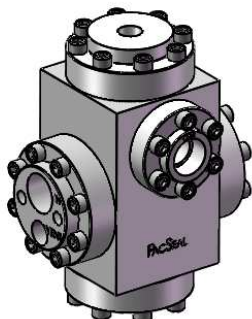
KR-75 Regulator with Subplate Mount (NPT/SAE) and Failsafe Air Motor Operator
Example: KR-75M3RFSA



KR-75 Regulator with Failsafe Hydraulic Motor Operator
Example: KR-75N3RFSH



KR-75 Regulator with Direct Internal Override
Example: KR-75S5DM-IO



KR-75 Regulator with Hydraulic Pilot Operator
Example: KR-75N5PH



PROPRIETARY AND CONFIDENTIAL

THE INFORMATION CONTAINED IN THIS DRAWING IS THE SOLE PROPERTY OF PacSeal. ANY REPRODUCTION IN PART OR AS A WHOLE WITHOUT THE WRITTEN PERMISSION OF PacSeal IS PROHIBITED.

TITLE

Configuration Overview

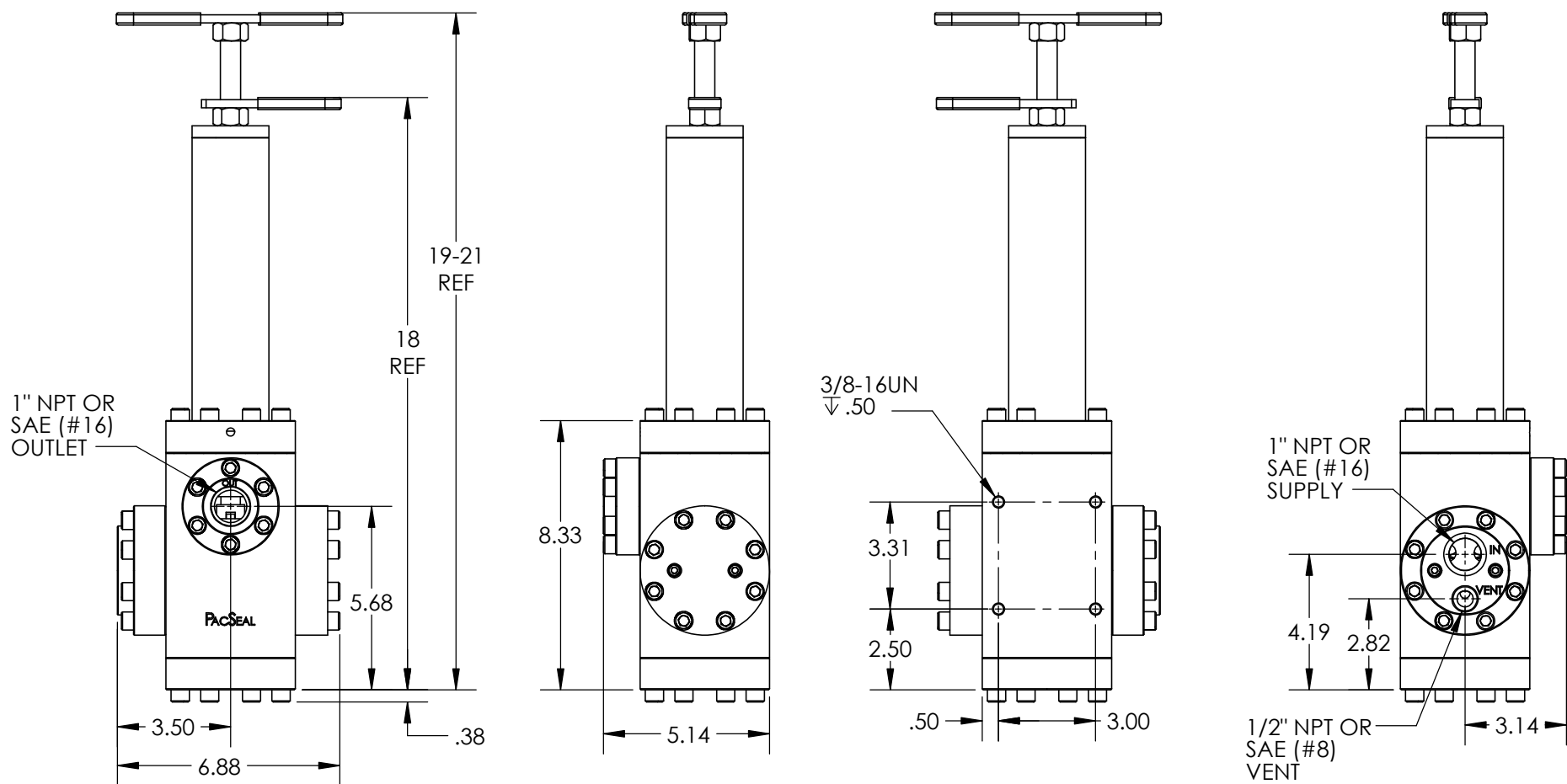
SIZE

A

REV


4

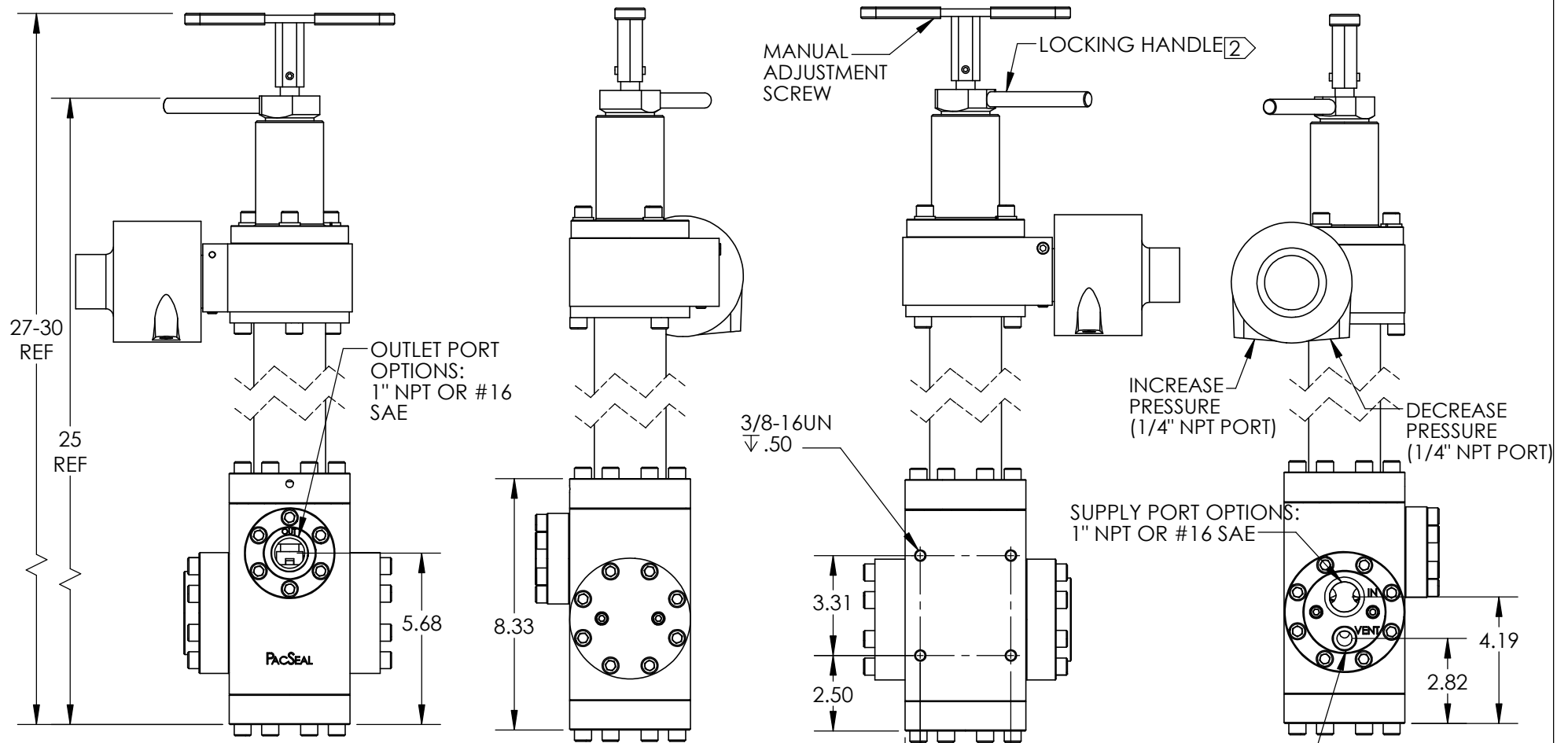
SHEET 3 OF 25



Notes:


1. Adjustment handle can be threaded in or out to increase or decrease compression on the spring and thus on the regulated outlet pressure.
2. Model configuration (Regulated Outlet Pressure) options: L, R, D, V
3. Weight - 48 lb.
4. All dimensions are consistent for KR-75 NPT or SAE ORB porting options, regardless of supply/outlet pressure and operator selection.

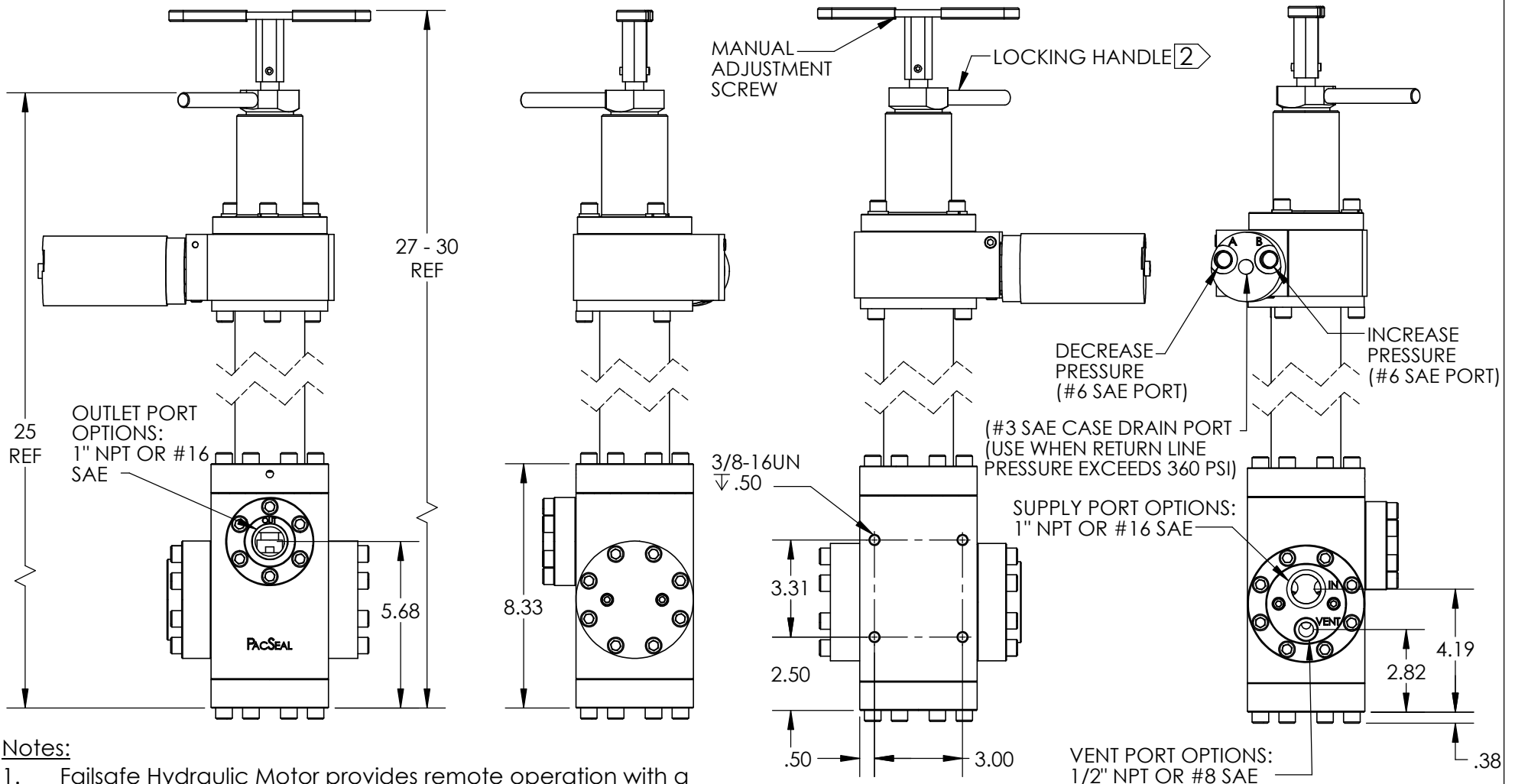
			
<p>PROPRIETARY AND CONFIDENTIAL</p> <p>THE INFORMATION CONTAINED IN THIS DRAWING IS THE SOLE PROPERTY OF PacSeal. ANY REPRODUCTION IN PART OR AS A WHOLE WITHOUT THE WRITTEN PERMISSION OF PacSeal IS PROHIBITED.</p>	<p>TITLE KR-75 Regulator w/ Manual Operator (NPT/SAE) Installation Drawing</p>	<p>SIZE A</p>	<p>REV 4</p>
			<p>SHEET 4 OF 25</p>



Notes:

1. Failsafe Air Motor provides remote operation with a manual override. Upon loss of pilot signal, there is no loss of regulated outlet pressure.
- ② Turn locking handle clockwise to lock for failsafe remote operation. Turn locking handle counter-clockwise to unlock for manual operation/override.
3. Recommended Air Supply - 80 to 130 psi
4. Model configuration (Regulated Outlet Pressure) options: L, R, D, V
5. Weight - 77 lb.
6. All dimensions are consistent for KR-75 NPT or SAE ORB porting options, regardless of supply/outlet pressure and operator selection.

			
<p style="text-align: center;">PROPRIETARY AND CONFIDENTIAL</p> <p>THE INFORMATION CONTAINED IN THIS DRAWING IS THE SOLE PROPERTY OF PacSeal. ANY REPRODUCTION IN PART OR AS A WHOLE WITHOUT THE WRITTEN PERMISSION OF PacSeal IS PROHIBITED.</p>	<p>TITLE KR-75 Regulator w/ Failsafe Air Operator (NPT/SAE) Installation Drawing</p>	<p>SIZE A</p>	<p>REV 4</p>
		<p>SHEET 5 OF 25</p>	



Notes:

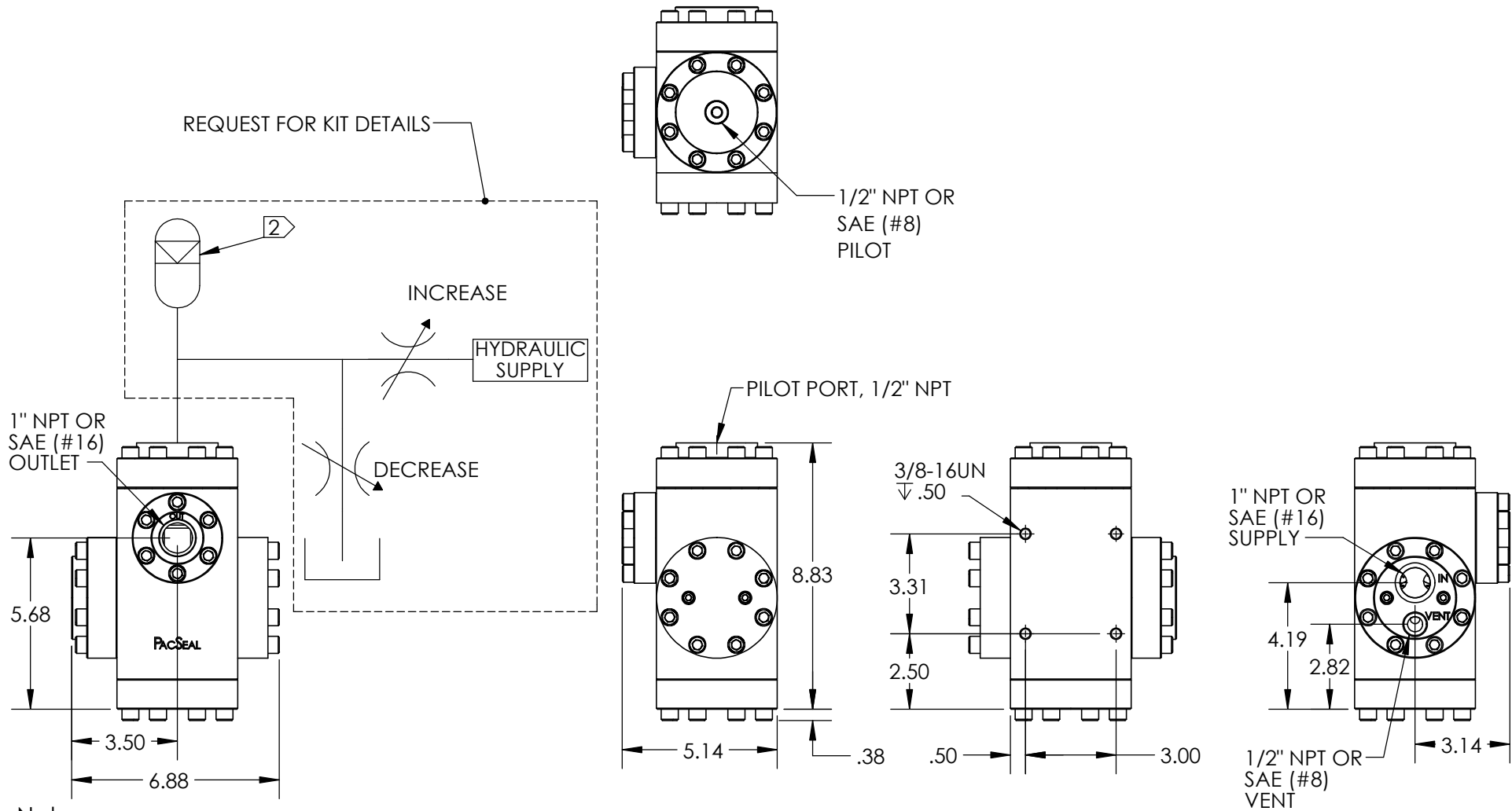
1. Failsafe Hydraulic Motor provides remote operation with a manual override. Upon loss of pilot signal, there is no loss of regulated outlet pressure.
- ② Turn locking handle clockwise to lock for failsafe remote operation. Turn locking handle counter-clockwise to unlock for manual operation/override.
3. Max Hydraulic Motor Supply Pressure - 1500 psi
4. Model configuration (Regulated Outlet Pressure) options: L, R, D, V
5. Weight - 74 lb.
6. All dimensions are consistent for KR-75 NPT or SAE ORB porting options, regardless of supply/outlet pressure and operator selection.



PROPRIETARY AND CONFIDENTIAL
 THE INFORMATION CONTAINED IN THIS DRAWING IS THE SOLE PROPERTY OF PacSeal. ANY REPRODUCTION IN PART OR AS A WHOLE WITHOUT THE WRITTEN PERMISSION OF PacSeal IS PROHIBITED.

TITLE **KR-75 Regulator w/
 Failsafe Hydraulic
 Operator (NPT/SAE)
 Installation Drawing**

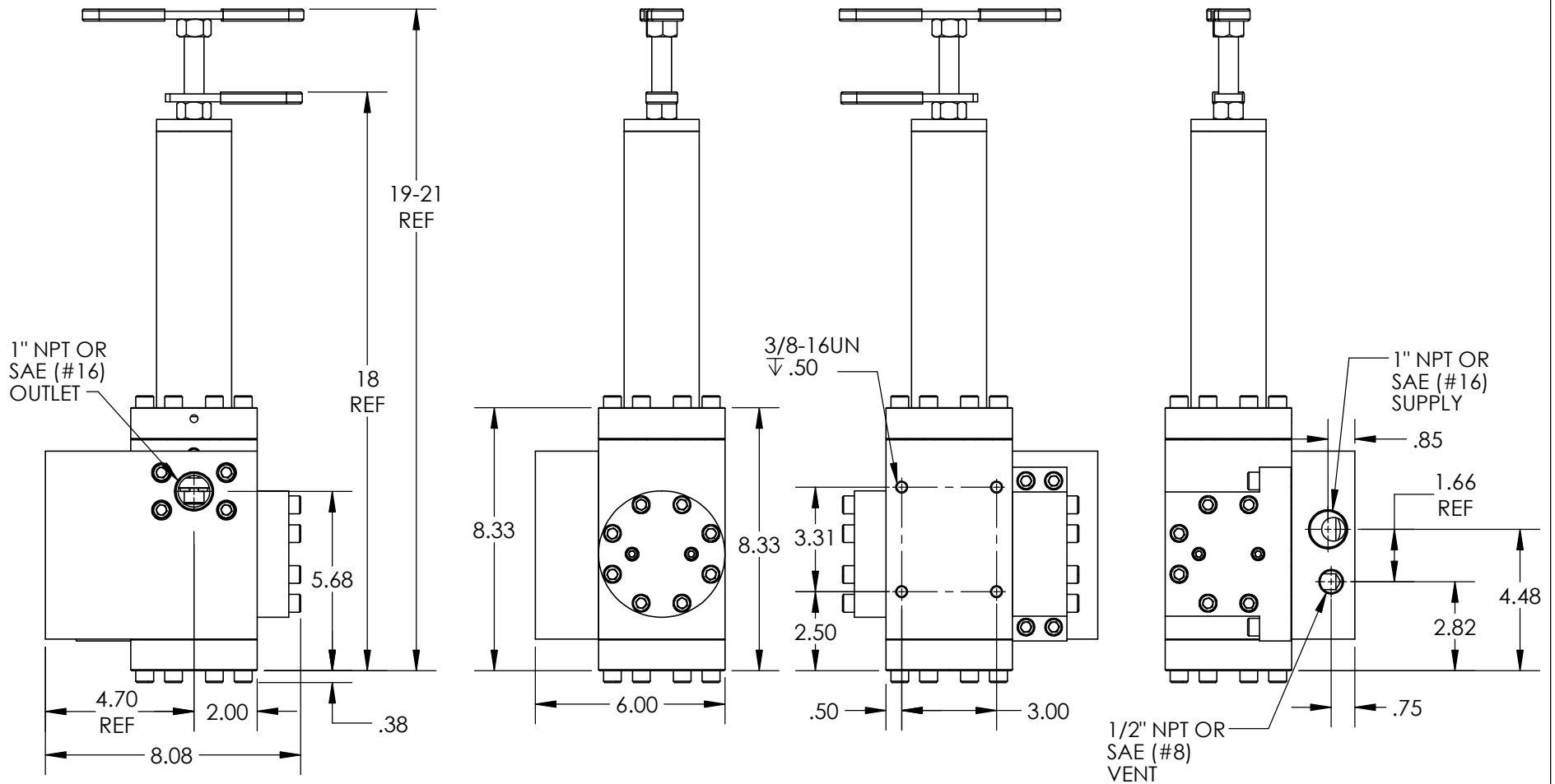
SIZE A	REV 4
SHEET 6 OF 25	



Notes:

1. A remote, variable hydraulic signal operates on a piston with a 1:1 ratio which allows for the most precisely controlled outlet pressures of all options. As a safety measure, loss of hydraulic pilot pressure will result in the outlet venting to tank.
2. Requires a minimum 1 Pint Accumulator for operation
3. Model configuration (Regulated Outlet Pressure) option: P
4. Weight - 41 lb.
5. All dimensions are consistent for KR-75 NPT or SAE ORB porting options, regardless of supply/outlet pressure and operator selection.

<p style="text-align: center; margin: 0;">PROPRIETARY AND CONFIDENTIAL</p> <p style="font-size: 8px; margin: 0;">THE INFORMATION CONTAINED IN THIS DRAWING IS THE SOLE PROPERTY OF PacSeal. ANY REPRODUCTION IN PART OR AS A WHOLE WITHOUT THE WRITTEN PERMISSION OF PacSeal IS PROHIBITED.</p>	<p style="margin: 0;">TITLE KR-75 Regulator w/ Hydraulic Pilot Operator (NPT/SAE) Installation Drawing</p>	<p style="margin: 0;">SIZE A</p>	<p style="margin: 0;">REV 4</p>
<p style="margin: 0;">SHEET 7 OF 25</p>			



Notes:

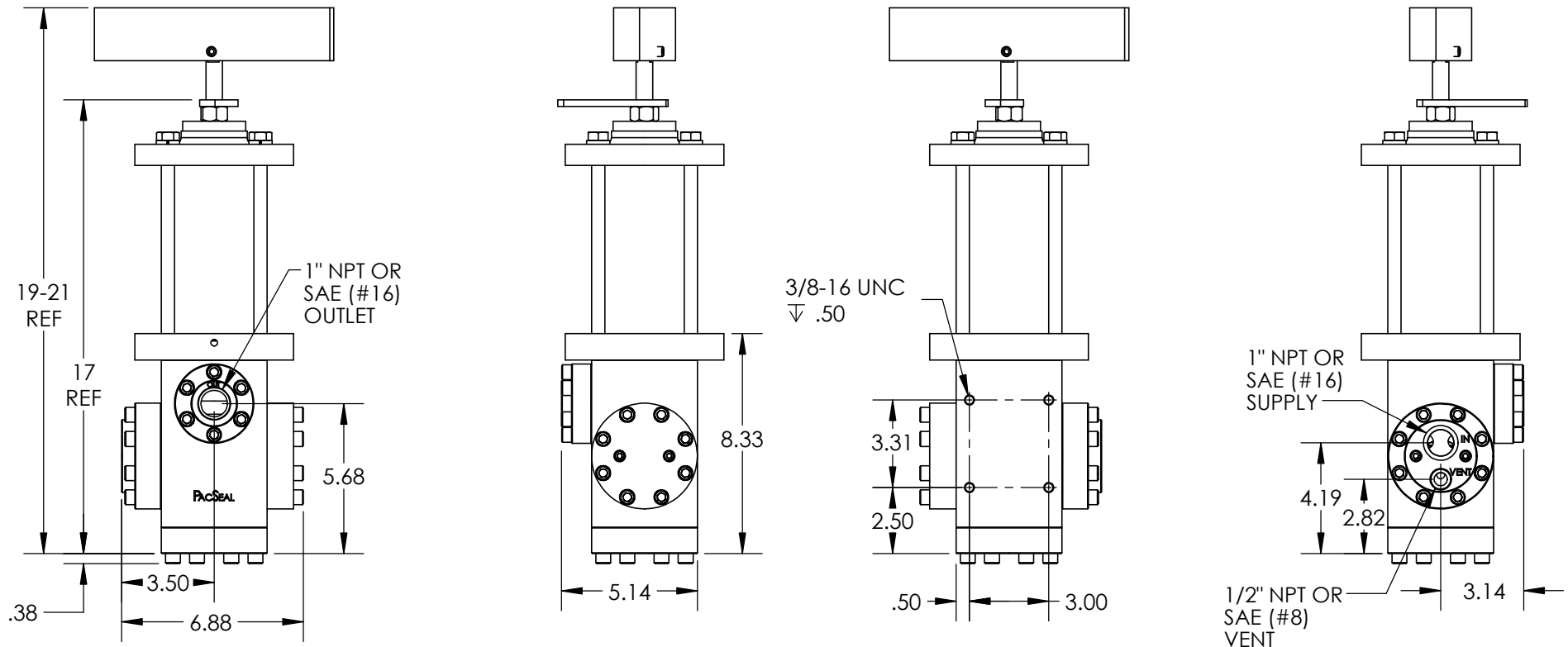
1. Operator options: Manual, FSA, FSH, or Hydraulic Pilot
2. Model configuration (Regulated Outlet Pressure) options: D, L, R, V
3. Weight - 73 lb.
4. All dimensions are consistent for KR-75 NPT or SAE ORB porting options, regardless of supply/outlet pressure and operator selection.
5. Refer to sheets 5-7 for other operator dimensions.



PROPRIETARY AND CONFIDENTIAL
 THE INFORMATION CONTAINED IN THIS DRAWING IS THE SOLE PROPERTY OF PacSeal. ANY REPRODUCTION IN PART OR AS A WHOLE WITHOUT THE WRITTEN PERMISSION OF PacSeal IS PROHIBITED.

TITLE
**KR-75 Subplate Mount
 (NPT/SAE) Regulator
 Installation Drawing**

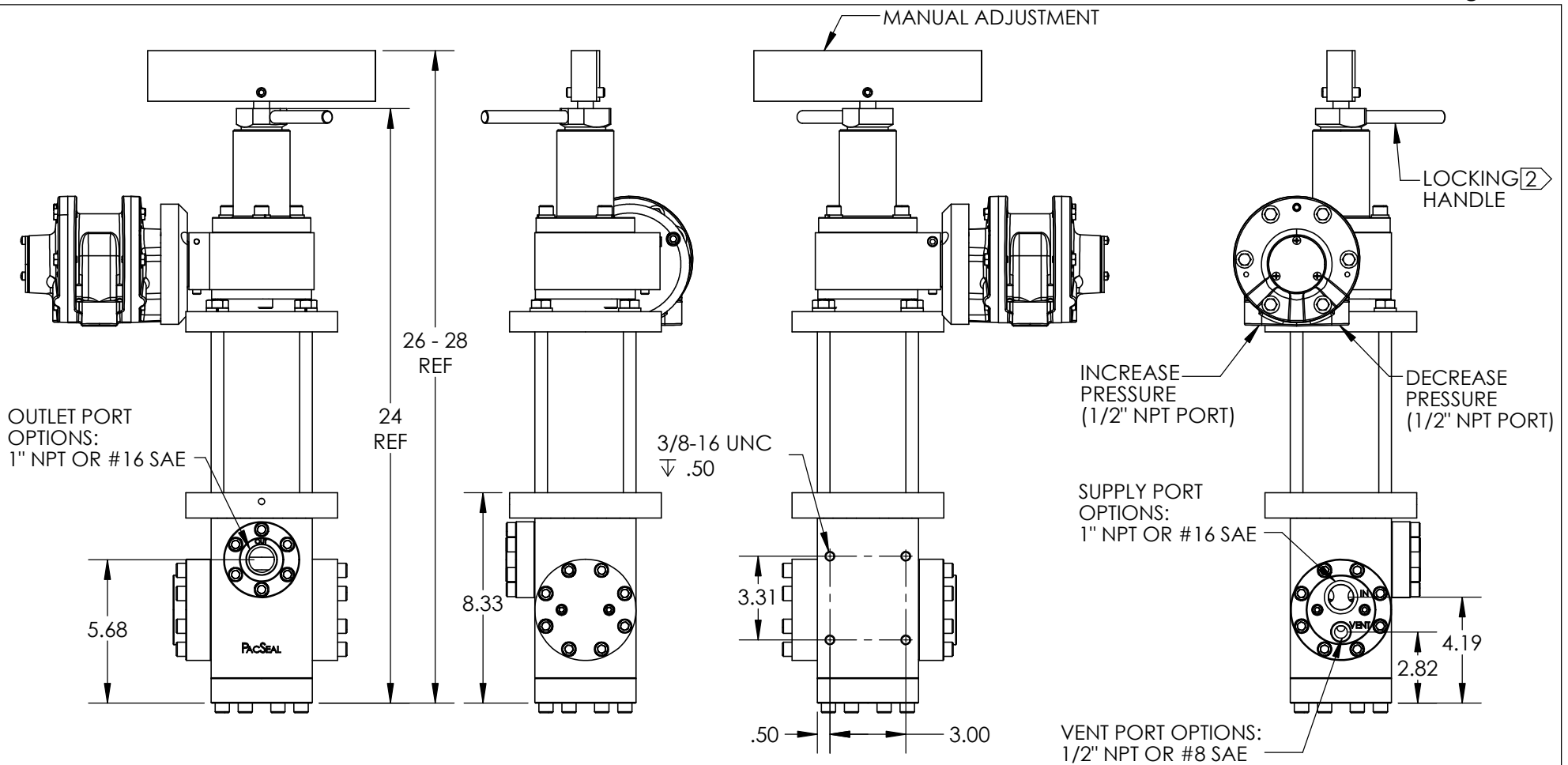
SIZE A	REV 4
SHEET 8 OF 25	



Notes:


1. Adjustment handle can be threaded in or out to increase or decrease compression on the spring and thus on the regulated outlet pressure.
2. Model configuration (Regulated Outlet Pressure) options: H (5000/6000 psi supply) and W (6000 psi supply).
3. Weight - 73 lb.
4. All dimensions are consistent for KR-75 NPT or SAE ORB porting options, regardless of supply/outlet pressure and operator selection.

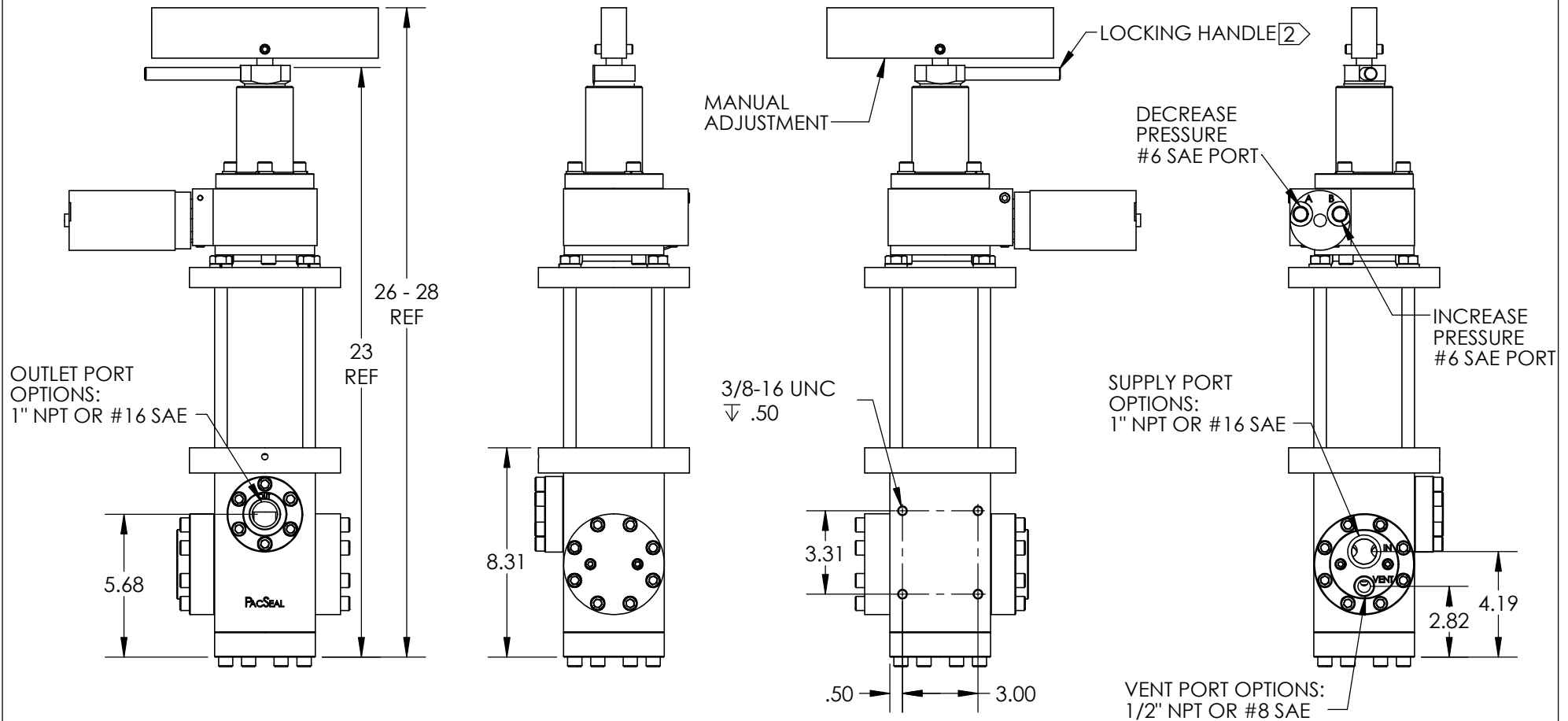
			
<p style="text-align: center;">PROPRIETARY AND CONFIDENTIAL</p> <p>THE INFORMATION CONTAINED IN THIS DRAWING IS THE SOLE PROPERTY OF PacSeal. ANY REPRODUCTION IN PART OR AS A WHOLE WITHOUT THE WRITTEN PERMISSION OF PacSeal IS PROHIBITED.</p>	<p>TITLE</p> <p style="text-align: center;">High Pressure Output Regulator w/ Manual Operator</p>	<p>SIZE</p> <p style="font-size: 2em;">A</p>	<p>REV</p> <p style="font-size: 2em;">4</p>
			<p>SHEET 9 OF 25</p>



Notes:

1. Failsafe Air Motor provides remote operation with a manual override. Upon loss of pilot signal, there is no loss of regulated outlet pressure.
- ② Turn locking handle clockwise to lock for failsafe remote operation. Turn locking handle counter-clockwise to unlock for manual operation/override.
3. Recommended Air Supply - 80 to 130 psi
4. Model configuration (Regulated Outlet Pressure) option: H (5000 psi supply) and W (6000 psi supply).
5. Weight - 115 lb.
6. All dimensions are consistent for KR-75 NPT or SAE ORB porting options, regardless of supply/outlet pressure and operator selection.

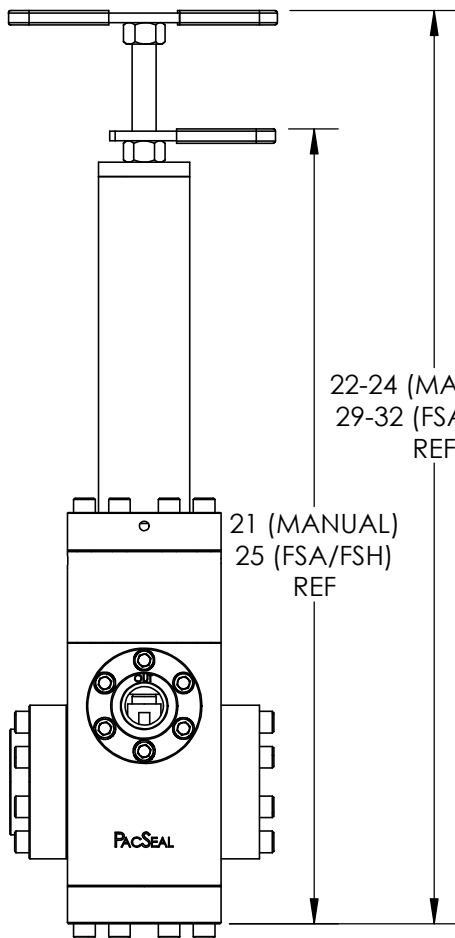
			
<p>PROPRIETARY AND CONFIDENTIAL</p> <p>THE INFORMATION CONTAINED IN THIS DRAWING IS THE SOLE PROPERTY OF PacSeal. ANY REPRODUCTION IN PART OR AS A WHOLE WITHOUT THE WRITTEN PERMISSION OF PacSeal IS PROHIBITED.</p>	<p>TITLE High Pressure Output Regulator w/ High Torque Failsafe Air Operator</p>	<p>SIZE A</p>	<p>REV 4</p>
			<p>SHEET 10 OF 25</p>



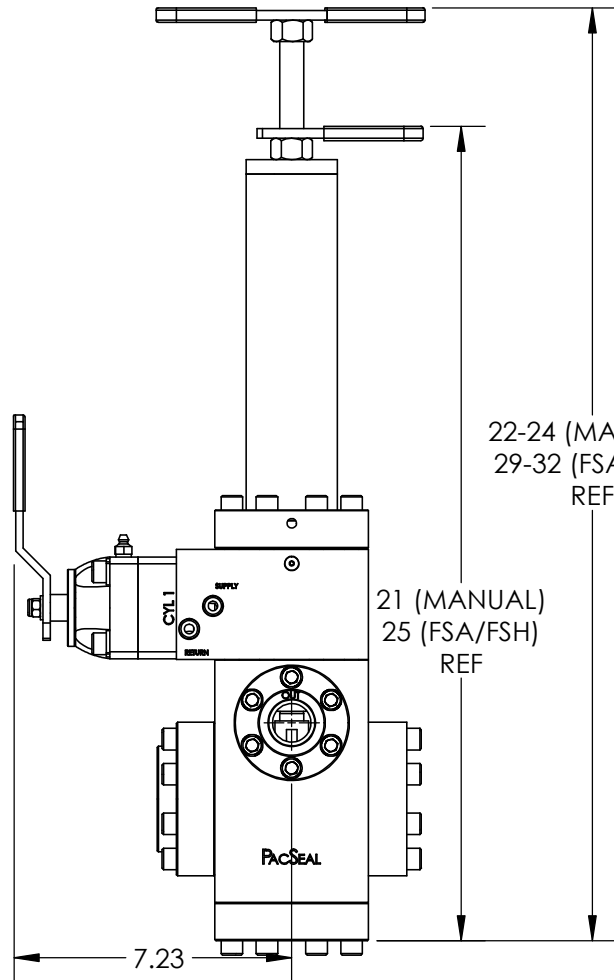
Notes:

1. Failsafe Hydraulic Motor provides remote operation with a manual override. Upon loss of pilot signal, there is no loss of regulated outlet pressure.
- ② Turn locking handle clockwise to lock for failsafe remote operation. Turn locking handle counter-clockwise to unlock for manual operation/override.
3. Max hydraulic motor inlet - 1500 psi
4. Model configuration (Regulated Outlet Pressure) option: H (5000 psi supply) and W (6000 psi supply).
5. Weight - 98 lb.
6. All dimensions are consistent for KR-75 NPT or SAE ORB porting options, regardless of supply/outlet pressure and operator selection.

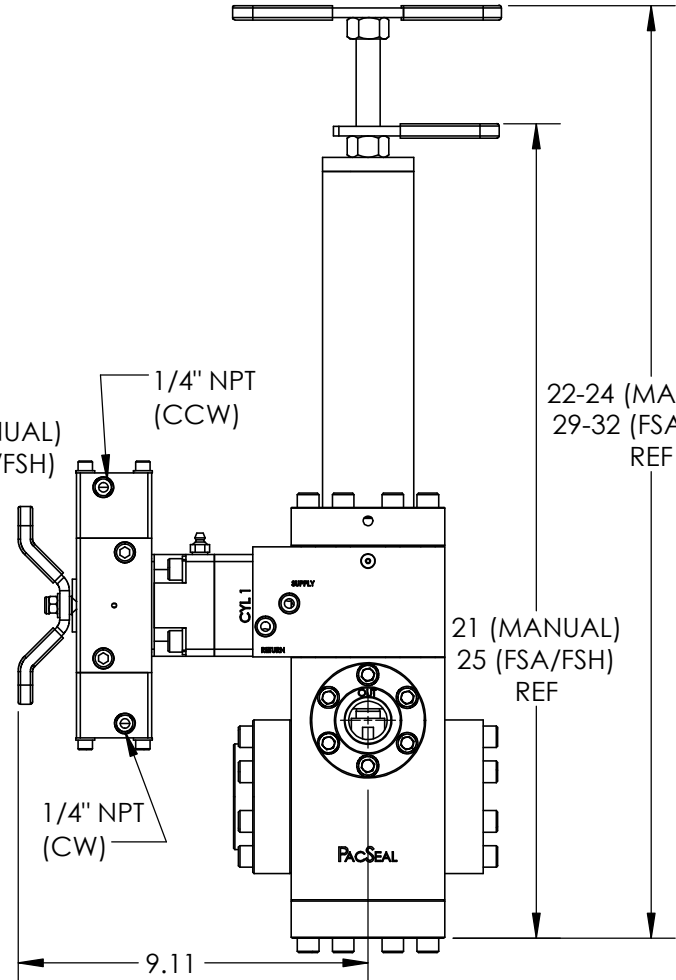
			
<p>PROPRIETARY AND CONFIDENTIAL</p> <p>THE INFORMATION CONTAINED IN THIS DRAWING IS THE SOLE PROPERTY OF PacSeal. ANY REPRODUCTION IN PART OR AS A WHOLE WITHOUT THE WRITTEN PERMISSION OF PacSeal IS PROHIBITED.</p>	<p>TITLE High Pressure Output Regulator w/ Failsafe Hydraulic Operator</p>	<p>SIZE A</p>	<p>REV 4</p>
			<p>SHEET 11 OF 25</p>



KR-75 Internal Override Remote Pilot Operation (-IO)



KR-75 Internal Override with SV-25 Open Center Pilot Valve (-IS)



KR-75 Internal Override with SVx-25 Open Center Pilot Air Actuated Valve (-IX) (80-150 psi air inlet) (3000 psi working pressure)

Notes:

- ① See SV-25 product information for further details
- ② See SVx-25 product information for further details
- 3. Regulated outlet pressure options: L, R, E, D, V

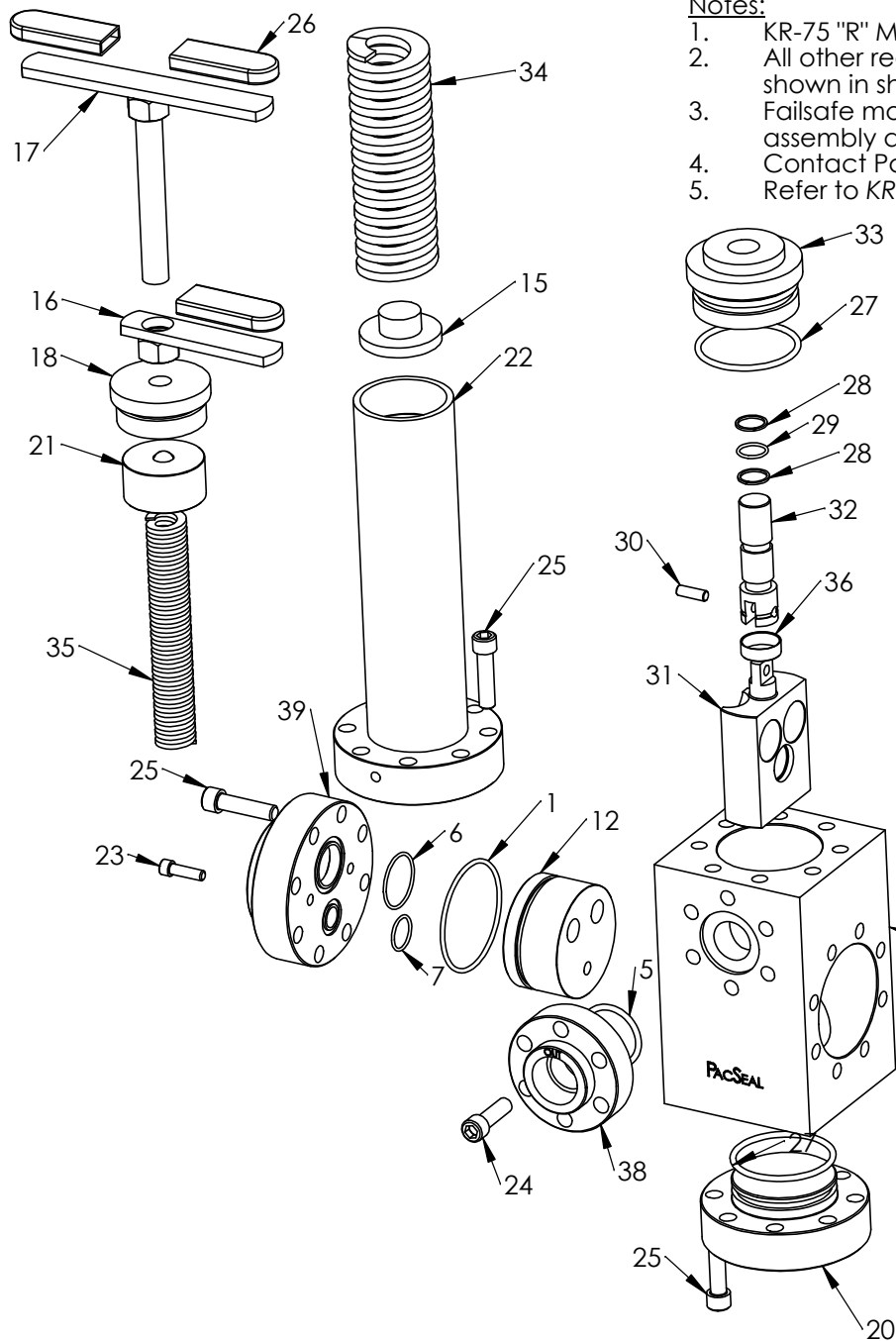
The I/O Bypass operator allows full accumulator pressure to be supplied downstream of the regulator without a dedicated 4-way bypass valve in the circuit. The over-ride bypass is accomplished by applying a pilot signal to the I/O operator which is equal to or greater than the accumulator pressure. The pilot pressure forces the piston/ seal container assembly to the full open position where supply pressure flows through the regulator to the output circuit. Releasing the pilot signal allows the regulator to return to the original set pressure.



PROPRIETARY AND CONFIDENTIAL
 THE INFORMATION CONTAINED IN THIS DRAWING IS THE SOLE PROPERTY OF PacSeal. ANY REPRODUCTION IN PART OR AS A WHOLE WITHOUT THE WRITTEN PERMISSION OF PacSeal IS PROHIBITED.

TITLE KR-75 Internal Override Options Installation Drawing

SIZE A	REV 4
SHEET 12 OF 25	



Notes:

1. KR-75 "R" Manual Regulator shown for illustration purposes.
2. All other regulated outlet pressure model configurations shown in sheets 14 - 17.
3. Failsafe motor High Pressure Low Deadband operator assembly drawings shown in sheets 18-22.
4. Contact PacSeal for replacement parts.
5. Refer to KR-75 Maintenance Instructions for more details.

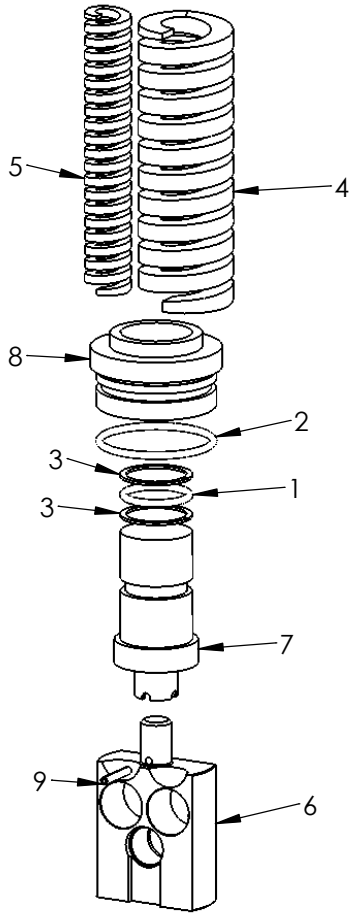
ITEM NO.	PART NO.	DESCRIPTION	QTY.
1	23-1263	O-Ring	2
2	23-1293	O-Ring	2
3	23-1322	Backup Ring	4
4	23-1323	O-Ring	4
5	23-1324	O-Ring	1
6	23-1325	O-Ring	1
7	23-1326	O-Ring	1
8	23-1329	Backup Ring	2
9	40-0013	Seal Ring, Vent	2
10	40-0014	Seal Ring, Supply	4
11	40-0015	Flow Plate, Blind	1
12	40-0016	Flow Plate, Supply	1
13	40-0109	Wave Spring	1
14	40-0110	Spring	2
15	40-0134	Spring Plate	1
16	40-0135	Lock Handle	1
17	40-0136	Adjusting Screw & Handle	1
18	40-0140	Plug, Adjustment Head	1
19	40-0195	Flange, Blind	1
20	40-0197	Flange, Lower	1
21	40-0300	Spring Guide	1
22	40-0383	Ajustment Head	1
23	50-0066	SHCS	4
24	50-0068	Bolt	6
25	50-0069	Bolt	32
26	50-0239	Grip, Handle	3
27	Note 2	O-Ring	2
28	Note 2	Backup Ring	2
29	Note 2	O-Ring	1
30	Note 2	Dowel Pin	1
31	Note 2	Seal Container	1
32	Note 2	Piston	1
33	Note 2	Piston Guide	1
34	Note 2	Spring, Outer	1
35	Note 2	Spring, Inner	1
36	Note 2	Pin, Retainer	1
37	Note 4	Body	1
38	Note 4	Flange, Outlet	1
39	Note 4	Flange, Main	1



<p>PROPRIETARY AND CONFIDENTIAL</p> <p>THE INFORMATION CONTAINED IN THIS DRAWING IS THE SOLE PROPERTY OF PacSeal. ANY REPRODUCTION IN PART OR AS A WHOLE WITHOUT THE WRITTEN PERMISSION OF PacSeal IS PROHIBITED.</p>	<p>TITLE</p> <p>KR-75 General Assembly Overview</p>	<p>SIZE</p> <p>A</p>	<p>REV</p> <p>4</p>
		<p>SHEET 13 OF 25</p>	

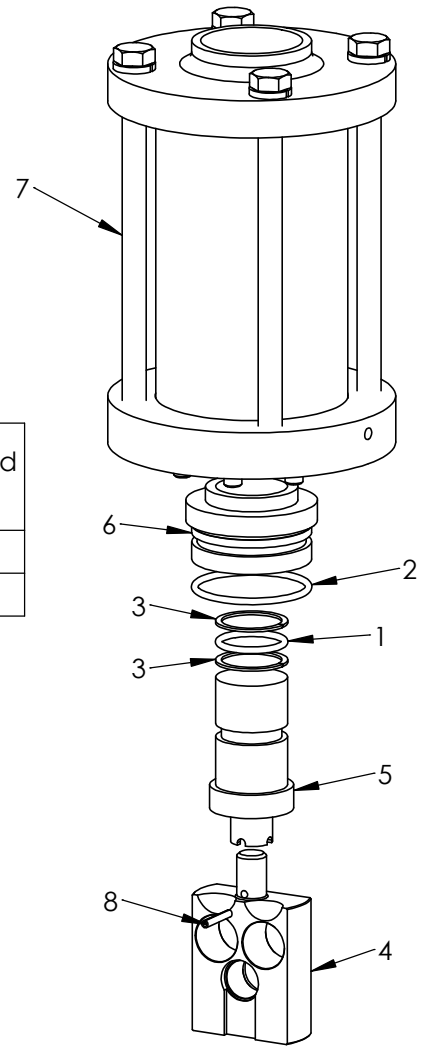
Notes:

- The listed components vary based on Supply and Regulated Outlet Pressures, while all other regulator components (shown in sheet 13 "General Assembly Overview") are shared.



KR-75 "L" Regulator

Model	Supply Pressure (psi)	Regulated Outlet Pressure (psi)	Deadband (psi)
L	3000/5000	200-2000	85-150
H	5000/6000	350-3300	85-150



**KR-75 "H" Regulator
with High Pressure Output
Adjustment Head**

ITEM NO.	PART NUMBER	DESCRIPTION	QTY.
1	23-1124	O-Ring	1
2	23-1319	O-Ring	1
3	23-1342	Backup Ring	2
4	40-0143	Spring, Outer	1
5	40-0144	Spring, Inner	1
6	40-0182	Seal Container	1
7	40-0995	Piston, L	1
8	40-0996	Piston Guide, L	1
9	50-0117	Roll Pin	1

ITEM NO.	PART NUMBER	DESCRIPTION	QTY.
1	23-1124	O-Ring	1
2	23-1319	O-Ring	1
3	23-1342	Backup Ring	2
4	40-0182	Seal Container	1
5	40-0995	Piston, L	1
6	40-0996	Piston Guide, L	1
7	40-2927	KR-75/140/150 L-HP Manual Operator	1
8	50-0117	Roll Pin	1



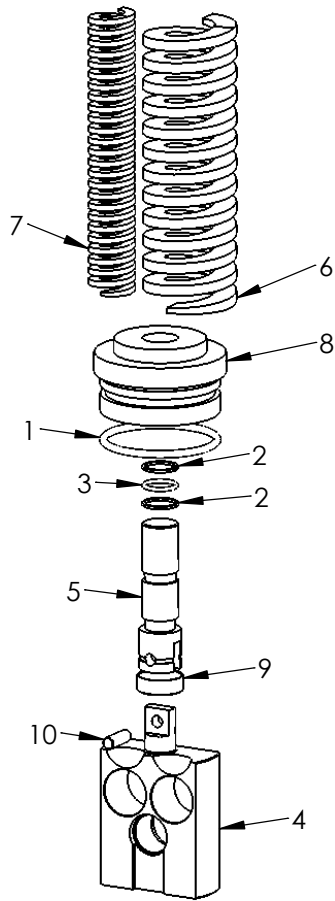
PROPRIETARY AND CONFIDENTIAL
THE INFORMATION CONTAINED IN THIS DRAWING IS THE SOLE PROPERTY OF PacSeal. ANY REPRODUCTION IN PART OR AS A WHOLE WITHOUT THE WRITTEN PERMISSION OF PacSeal IS PROHIBITED.

TITLE **L and H Model Configurations Assembly Drawing**

SIZE **A** REV **4**
SHEET 14 OF 25

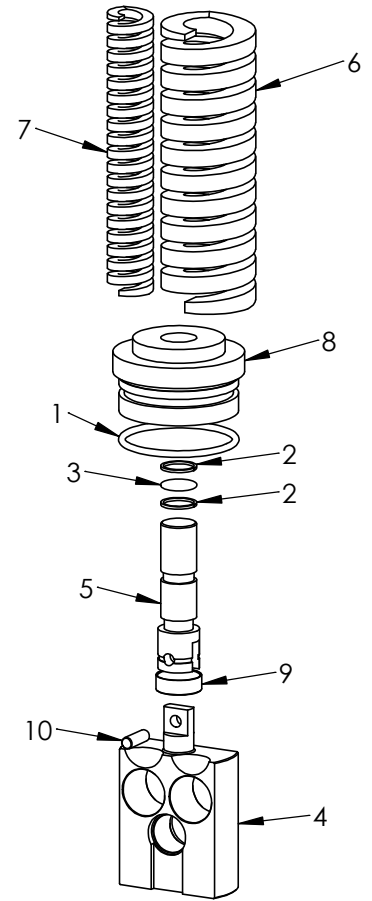
Notes:

1. The listed components vary based on Supply and Regulated Outlet Pressures, while all other regulator components (shown in sheet 13 "General Assembly Overview") are shared.



KR-75 "R" Regulator

Model	Supply Pressure (psi)	Regulated Outlet Pressure (psi)	Deadband (psi)
R	3000/5000	550-2500	300-600
V	6000	1200-5500	450-800



KR-75 "V" Regulator

ITEM NO.	PART NUMBER	DESCRIPTION	QTY.
1	23-1319	O-Ring	1
2	23-1320	Backup Ring	2
3	23-1321	O-Ring	1
4	40-0106	Seal Container	1
5	40-0107	Piston, R	1
6	40-0189	Spring, Outer	1
7	40-0190	Spring, Inner	1
8	40-0186	Piston Guide, R	1
9	40-0199	Pin, Retainer	1
10	50-0087	Dowel Pin	1

ITEM NO.	PART NUMBER	DESCRIPTION	QTY.
1	23-1319	O-Ring	1
2	23-1320	Backup Ring	2
3	23-1321	O-Ring	1
4	40-0106	Seal Container	1
5	40-0107	Piston, R	1
6	40-0143	Spring, Outer	1
7	40-0144	Spring, Inner	1
8	40-0186	Piston Guide, R	1
9	40-0199	Pin, Retainer	1
10	50-0087	Dowel Pin	1



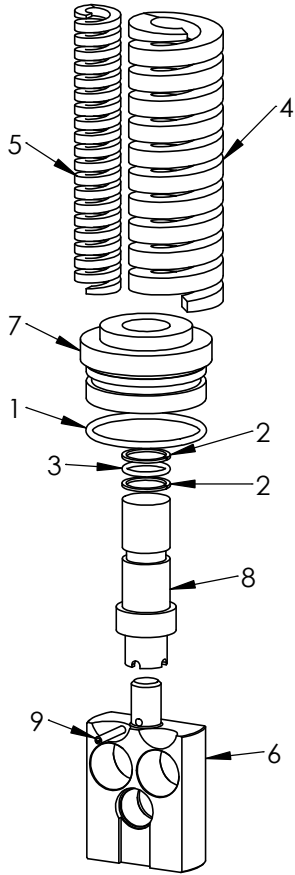
PROPRIETARY AND CONFIDENTIAL
 THE INFORMATION CONTAINED IN THIS DRAWING IS THE SOLE PROPERTY OF PacSeal.
 ANY REPRODUCTION IN PART OR AS A WHOLE WITHOUT THE WRITTEN PERMISSION OF PacSeal IS PROHIBITED.

TITLE R and V Model Configurations Assembly Drawing

SIZE A **REV** 4
 SHEET 15 OF 25

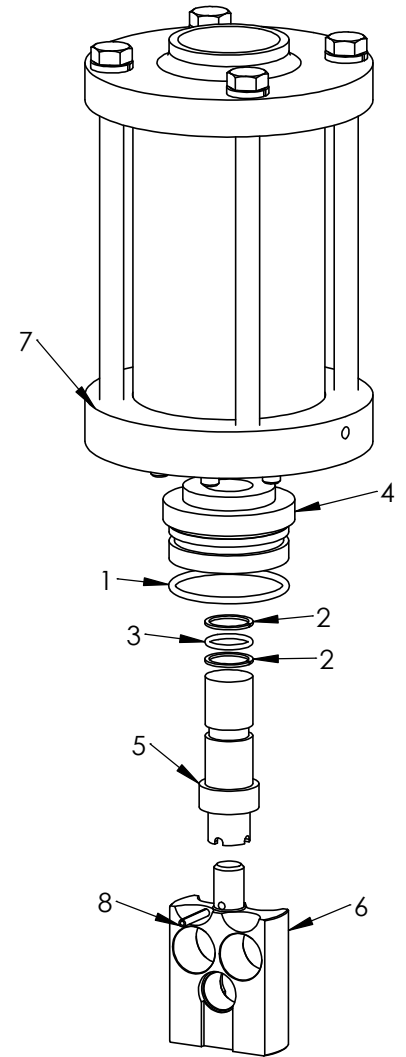
Notes:

1. The listed components vary based on Supply and Regulated Outlet Pressures, while all other regulator components (shown in sheet 13 "General Assembly Overview") are shared.



KR-75 "D" Regulator

Model	Supply Pressure (psi)	Regulated Outlet Pressure (psi)	Deadband (psi)
D	5000/6000	400-4000	150-250
W	6000	600-5000	150-250



**KR-75 "W" Regulator
with High Pressure Output
Adjustment Head**

ITEM NO.	PART NUMBER	DESCRIPTION	QTY.
1	23-1319	O-Ring	1
2	23-1331	Backup Ring	2
3	23-1332	O-Ring	1
4	40-0143	Spring, Outer	1
5	40-0144	Spring, Inner	1
6	40-0182	Seal Container	1
7	40-1076	Piston Guide, D	1
8	40-1077	Piston, D	1
9	50-0117	Roll Pin	1

ITEM NO.	PART NUMBER	DESCRIPTION	QTY.
1	23-1319	O-Ring	1
2	23-1331	Backup Ring	2
3	23-1332	O-Ring	1
4	40-1076	Piston Guide, D	1
5	40-1077	Piston, D	1
6	40-1292	Seal Container	1
7	40-2927	KR-75/140/150 L-HP Manual Operator	1
8	50-0117	Roll Pin	1



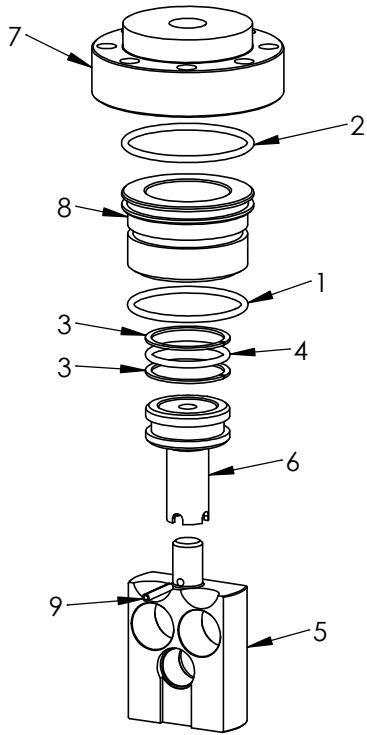
PROPRIETARY AND CONFIDENTIAL
THE INFORMATION CONTAINED IN THIS DRAWING IS THE SOLE PROPERTY OF PacSeal. ANY REPRODUCTION IN PART OR AS A WHOLE WITHOUT THE WRITTEN PERMISSION OF PacSeal IS PROHIBITED.

TITLE **D and W Model Configurations Assembly Drawing**

SIZE **A** REV **4**
SHEET 16 OF 25

Notes:

- The listed components vary based on Supply and Regulated Outlet Pressures, while all other regulator components (shown in sheet 13 "General Assembly Overview") are shared.



Model	Supply Pressure (psi)	Regulated Outlet Pressure (psi)	Deadband (psi)
P	3000/5000/6000	50-6000	0-100

KR-75 "P" Regulator

ITEM NO.	PART NUMBER	DESCRIPTION	QTY.
1	23-1319	O-Ring	1
2	23-1327	O-Ring	1
3	23-1328	Backup Ring	2
4	23-1529	O-Ring	1
5	40-0182	Seal Container	1
6	40-0183	Piston	1
7	40-0298	Hydraulic Head	1
8	40-0299	Piston Guide	1
9	50-0117	Roll Pin	1



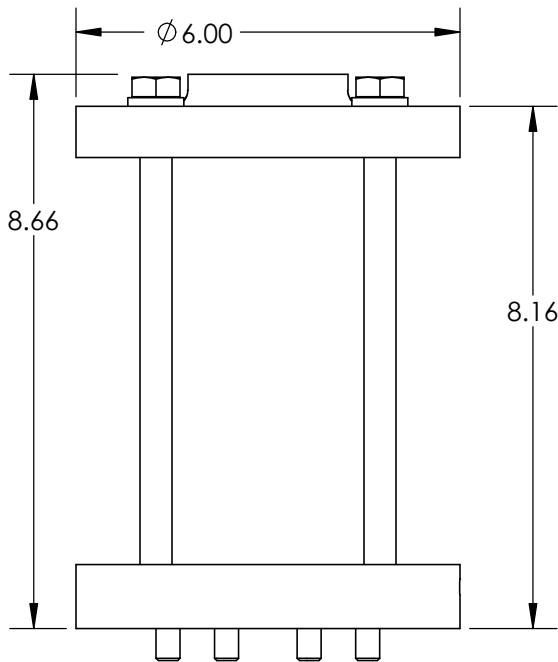
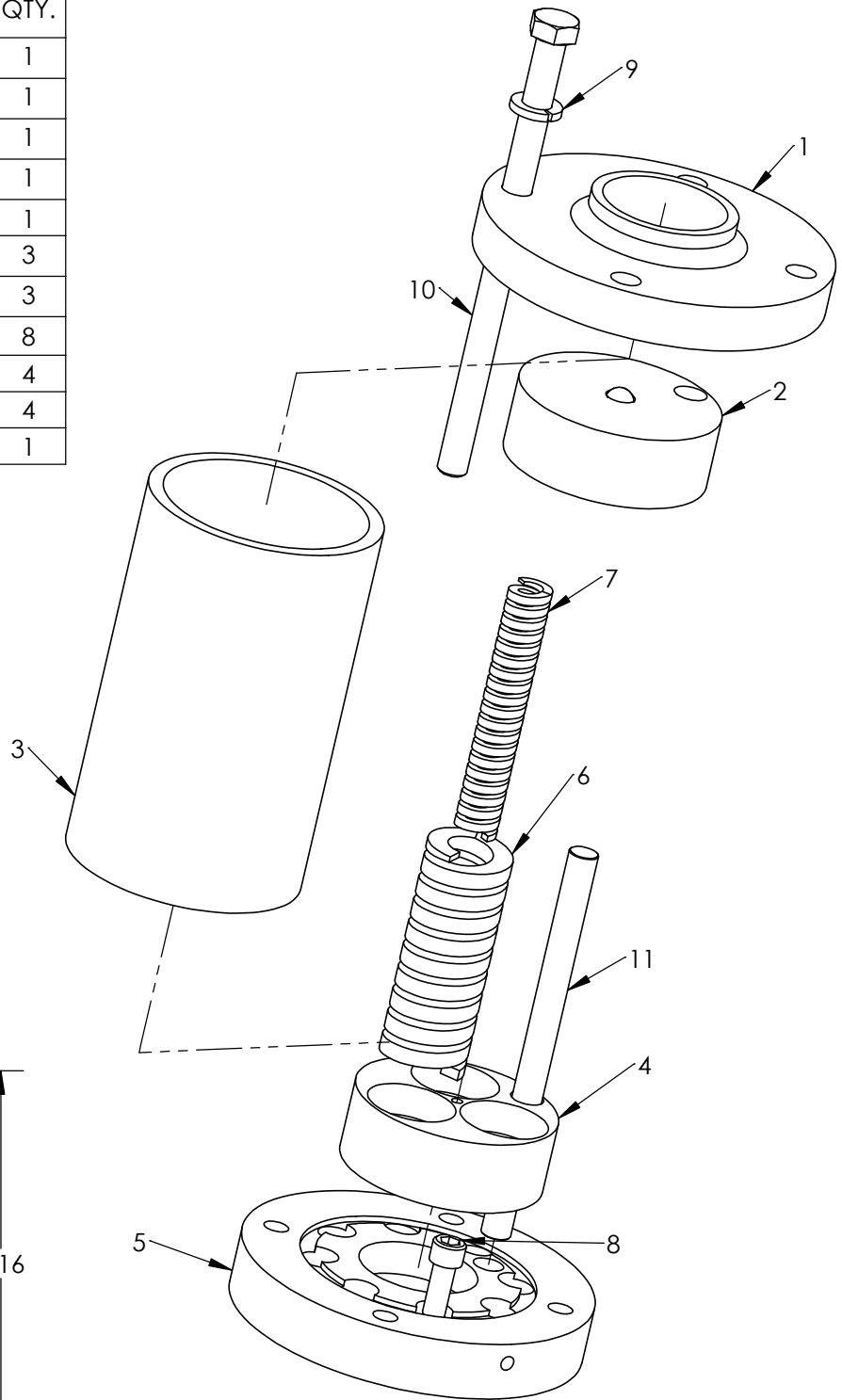
PROPRIETARY AND CONFIDENTIAL
 THE INFORMATION CONTAINED IN THIS DRAWING IS THE SOLE PROPERTY OF PacSeal. ANY REPRODUCTION IN PART OR AS A WHOLE WITHOUT THE WRITTEN PERMISSION OF PacSeal IS PROHIBITED.

TITLE
P Model Configurations Assembly Drawing

SIZE A	REV 4
-------------------------	------------------------

SHEET 17 OF 25

ITEM NO.	PART NUMBER	DESCRIPTION	QTY.
1	40-2654	Plate, Upper Actuator	1
2	40-2655	Plate, Upper Spring	1
3	40-2656	Cylinder, Actuator	1
4	40-2657	Plate, Lower Spring	1
5	40-2658	Plate, Lower Actuator	1
6	40-2659	Spring, Outer	3
7	40-2660	Spring, Inner	3
8	50-0072	Bolt	8
9	50-0104	Lock Washer	4
10	50-0434	Bolt	4
11	50-0435	Rod	1



KIT PART NUMBER
40-2927

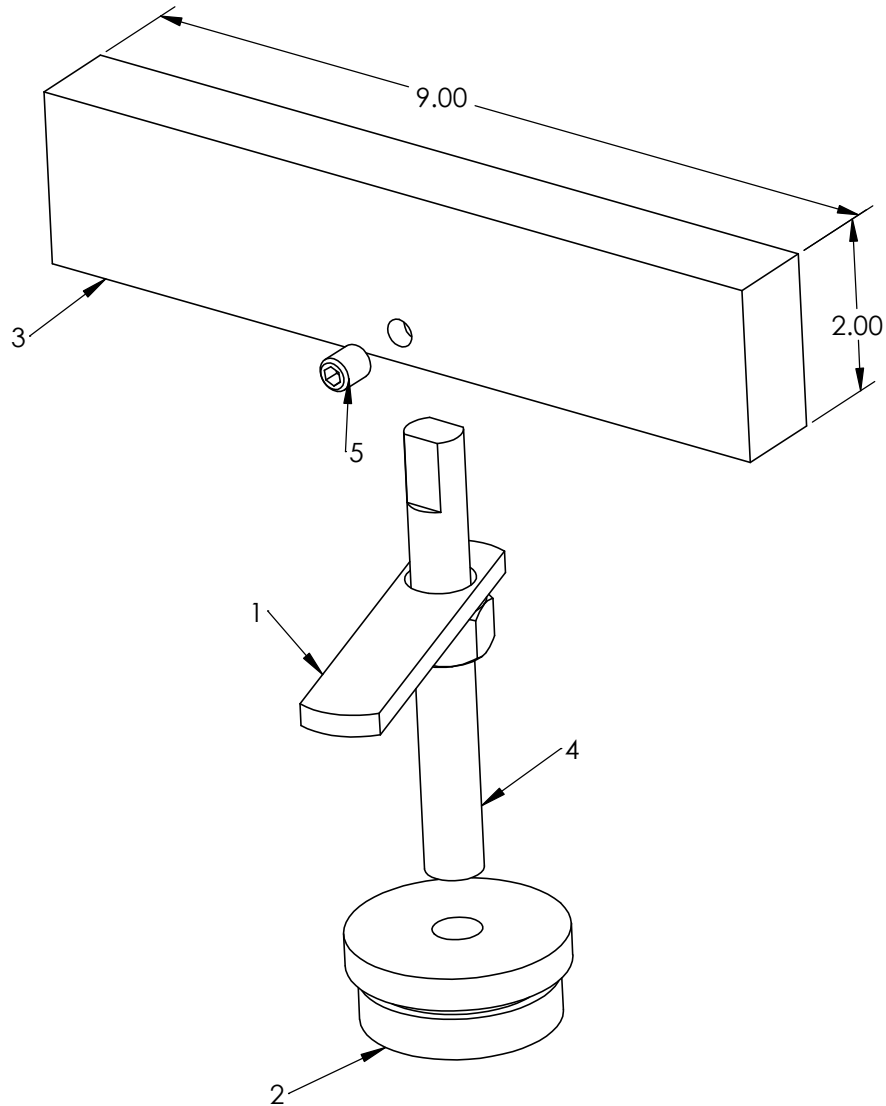


PROPRIETARY AND CONFIDENTIAL
THE INFORMATION CONTAINED IN THIS DRAWING IS THE SOLE PROPERTY OF PacSeal. ANY REPRODUCTION IN PART OR AS A WHOLE WITHOUT THE WRITTEN PERMISSION OF PacSeal IS PROHIBITED.

TITLE
**High Pressure Output
Adjustment Head
Assembly Drawing**

SIZE A	REV 4
SHEET 19 OF 25	

ITEM NO.	PART NUMBER	DESCRIPTION	QTY.
1	40-0135	Lock Handle	1
2	40-0140	Plug, Adjustment Head	1
3	40-3237	Handle, Fail Safe HP	1
4	40-3414	Adjusting Rod	1
5	50-0482	Set Screw	2



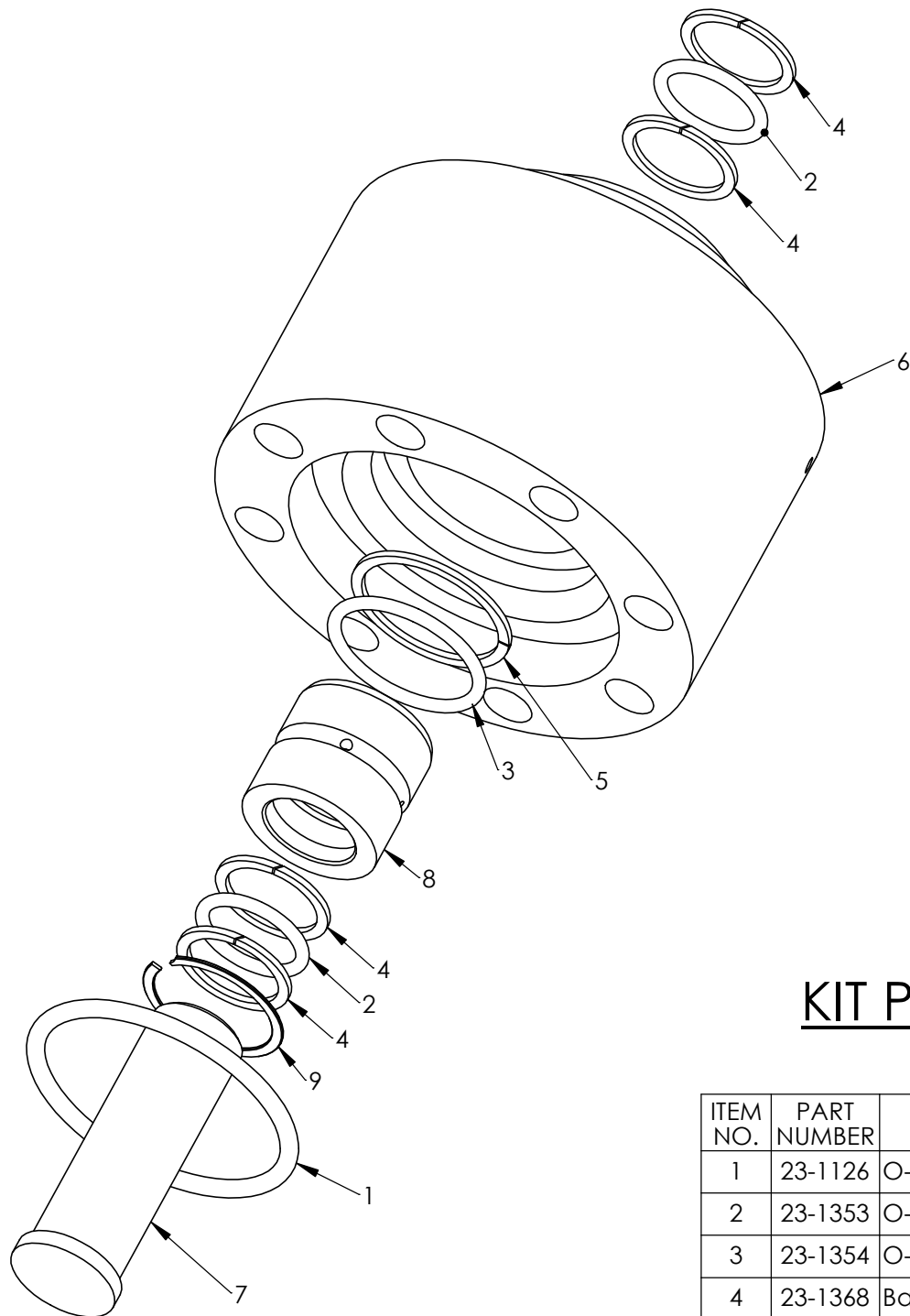
KIT PART NUMBER
40-3558



PROPRIETARY AND CONFIDENTIAL
 THE INFORMATION CONTAINED IN THIS DRAWING IS THE SOLE PROPERTY OF PacSeal. ANY REPRODUCTION IN PART OR AS A WHOLE WITHOUT THE WRITTEN PERMISSION OF PacSeal IS PROHIBITED.

TITLE High Pressure
 Output Manual
 Handle Assembly
 Drawing

SIZE	REV
A	4



KIT PART NUMBER
40-3147

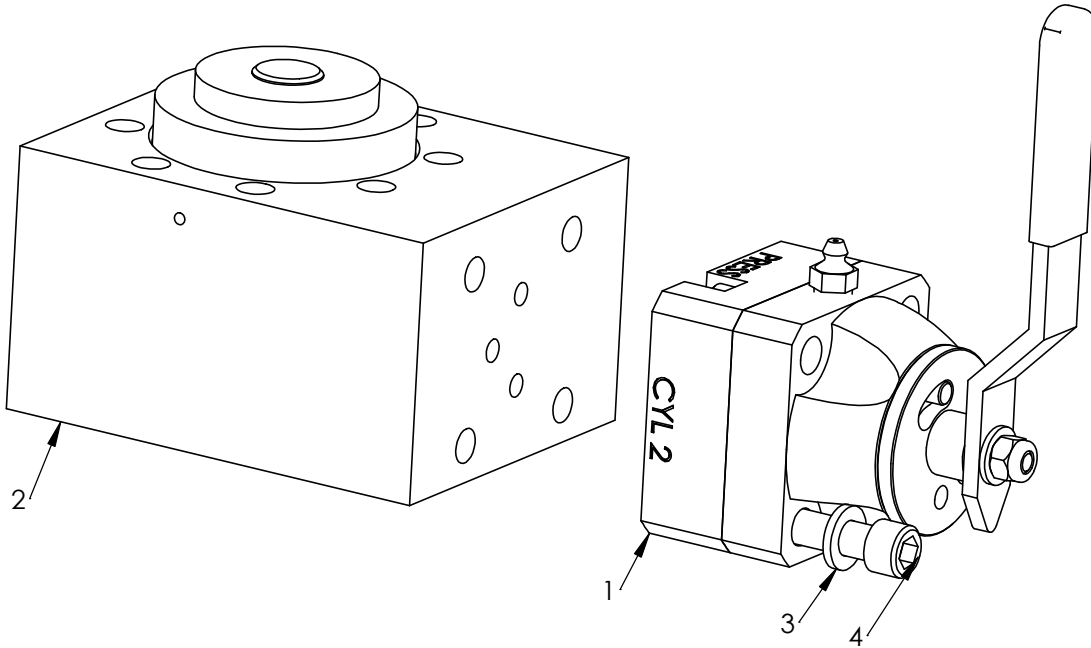
ITEM NO.	PART NUMBER	DESCRIPTION	QTY.
1	23-1126	O-Ring	1
2	23-1353	O-Ring	2
3	23-1354	O-Ring	1
4	23-1368	Backup Ring	4
5	23-1595	Backup Ring	1
6	40-2404	Body, Internal Override	1
7	40-2405	Piston, Internal Override	1
8	40-2436	Bushing, KR-75/140 Int Override	1
9	50-0409	Retaining Ring	1



PROPRIETARY AND CONFIDENTIAL
THE INFORMATION CONTAINED IN THIS DRAWING IS THE SOLE PROPERTY OF PacSeal. ANY REPRODUCTION IN PART OR AS A WHOLE WITHOUT THE WRITTEN PERMISSION OF PacSeal IS PROHIBITED.

**TITLE Internal Override
Bypass Direct
Operation Assembly
Drawing**

SIZE A	REV 4
SHEET 23 OF 25	



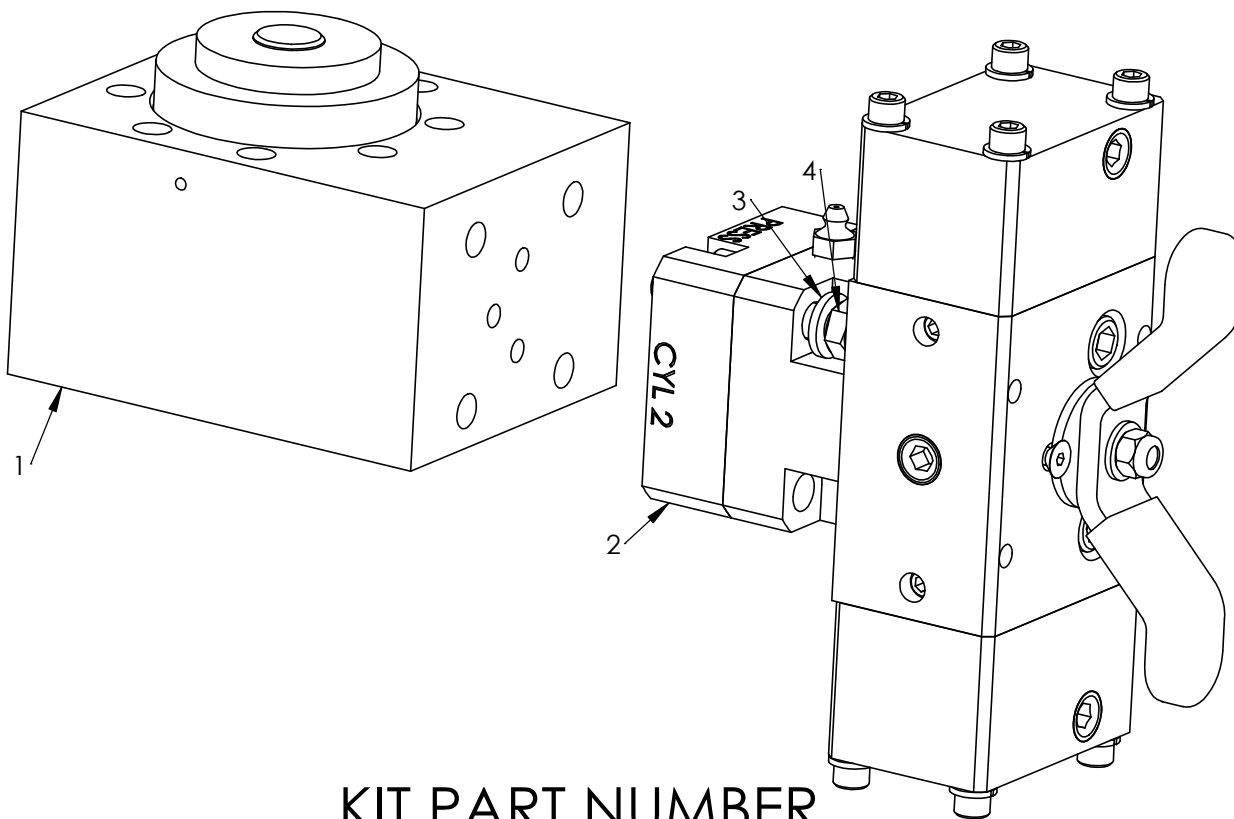
KIT PART NUMBER
40-3463

ITEM NO.	PART NUMBER	DESCRIPTION	QTY.
1	40-3301	SV-25 Open Center	1
2	40-3459	Internal Override, KR-75	1
3	50-0103	Lock Washer	4
4	50-0338	Bolt	4



<p>PROPRIETARY AND CONFIDENTIAL THE INFORMATION CONTAINED IN THIS DRAWING IS THE SOLE PROPERTY OF PacSeal. ANY REPRODUCTION IN PART OR AS A WHOLE WITHOUT THE WRITTEN PERMISSION OF PacSeal IS PROHIBITED.</p>	<p>TITLE Internal Override Bypass w/ SV-25 Assembly Drawing</p>	<p>SIZE A</p>	<p>REV 4</p>
		<p>SHEET 24 OF 25</p>	

ITEM NO.	PART NUMBER	DESCRIPTION	QTY.
1	40-3459	Internal Override, KR-75	1
2	40-4549	SVx-25 Open Center, 2-Pos 45° CW	1
3	50-0103	Lock Washer	4
4	50-0291	Bolt	4



KIT PART NUMBER
40-3561



PROPRIETARY AND CONFIDENTIAL
THE INFORMATION CONTAINED IN THIS DRAWING IS THE SOLE PROPERTY OF PacSeal. ANY REPRODUCTION IN PART OR AS A WHOLE WITHOUT THE WRITTEN PERMISSION OF PacSeal IS PROHIBITED.

TITLE
Internal Override Bypass w/ SVx-25 Assembly Drawing

SIZE A	REV 4
------------------	-----------------