



SV-100 Valve Specifications Table of Contents

2. Specifications and Data Sheet
3. Specifications and Data Sheet, continued
4. Porting Configurations Overview
5. Operator Configurations Overview
6. Rotor Flow and Detent Disc 3-Position Options
7. Rotor Flow and Detent Disc 2-Position Options
8. General Assembly Overview
9. SV-100 Porting Options with Manual Operator Installation Drawing
10. SV-100 with Pin Lock Detent Operator Installation and Assembly Drawing
11. SVX-100 with 2-Position 90° Direct Air Actuation Installation and Assembly Drawing
12. SVX-100 with 3-Position 90° Direct Air Actuation Installation and Assembly Drawing
13. SVX-100 with 2-Position 90° Direct Hydraulic Actuation Installation and Assembly Drawing
14. SVX-100 with 3-Position 90° Spring Centered Direct Hydraulic Actuation Installation and Assembly Drawing
15. SV-100 with Air Cylinder Actuator Installation and Assembly Drawing
16. SV-100 with Hydraulic Cylinder Actuator Installation and Assembly Drawing



All PacSeal Hydraulics' SV Directional Control Valves are designed with ShearFlo® metal-to-metal sealing technology. ShearFlo® sealing technology features:

- High cycle life and anti-wear design is suitable for critical service applications, including contaminated fluids.
- Leak proof, contaminant resistant metal-to-metal seal is accomplished by lapping and polishing hardened stainless steel sealing elements to exacting standards of finish and flatness.
- The sealing elements are spring preloaded and pressure energized, which maintains contact between the two sealing surfaces at all times.

All SV Valves are tested to PacSeal's strict quality control standards to ensure proper function and reliability. Every ShearFlo® sealing component in a repair kit is inspected to ensure trouble-free performance after field maintenance and repair.

PacSeal Hydraulics' rotary SV Directional Control Valves direct fluid flow to one or two cylinder ports, based on the selected rotor and detent combination, as specified in the "Valve Shift Options" table.

The SV valves' modular design accommodates various operator options (manual and remote with manual override) to suit the application at hand. The options available for manual operation are as follows:

- Detented (2 or 3-position)
- Spring Centered (3-position)
- Pin Lock Detent (3-position)

The remote operator options with manual override are available in pneumatic or hydraulic with 2 or 3 positions as follows:

- Actuator Cylinder bracket mounted to valve
- SVX Integral Actuator assembled atop the valve providing higher efficiency and immediate actuation

Various porting options provide further customization, as follows:

- Inline
- Bottom
- Subplate
- Manifold

General Specifications

Port Size	3/4 or 1 in. NPT or SAE ORB
Working Pressure Options (Liquid)	1500, 3000, or 6000 psi
Working Pressure Options (Gas)	2000 or 4000 psi
Return Port Pressure	250 psi (Max) ¹
Proof Pressure	1.5X Working Pressure
Burst Pressure	2X Working Pressure
Cv Factor	9.2
Rated Flow	75 gpm
Temp Rating	-40 to 250°F
Fluid Media	Hydraulic oil or lubricated water ²
Weight	See Installation Drawings

Materials

ShearFlo Sealing Components (Rotor and Seal Rings)	400 series SS Hardened ²
Shaft	400 series SS
Body	400 series SS
Housing	Carbon Steel
Handle, Detent Disc and Spacers, Hardware	Plated Carbon Steel
O-rings	Buna-N (N), Viton (V), or EPR (E)
Backup Rings	Teflon

¹ Full rated pressure (3000 or 6000 psi) with All Blocked Rotor option

² For water based media, special alloy seal rings may be required - Contact PacSeal for details

Valve Shift Options

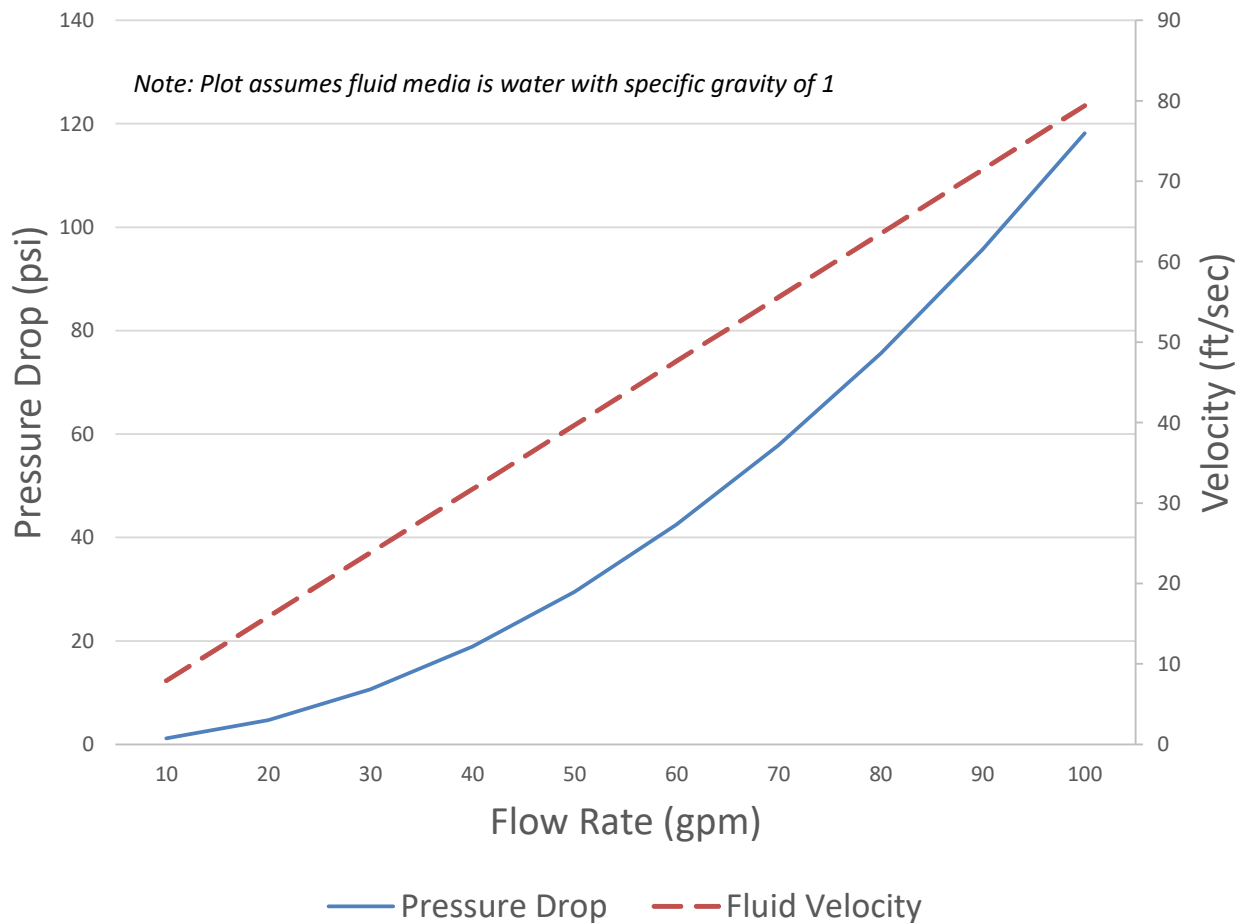
Detent Pattern	Valve Options
3-Position (4-way)	All options
2-Position 90° (4-way)	All options
2-Position 45° CW or CCW (3-way)	Selector, Manipulator, Open Center

Rotor Flow Options

Rotor Configuration	Center Position	CW or CCW Position
Manipulator	Cylinders drain to tank and pressure port blocked	Operates a cylinder port while the opposite port is returned to tank
Selector	Return port is open while cylinder and pressure ports are blocked	Operates a cylinder port while the opposite port is returned to tank
Bypass	Return port is open while cylinder and pressure ports are blocked	Operates a cylinder port while the opposite port is blocked
Open Center	Cylinder ports blocked while pressure and return ports are connected	Operates a cylinder port while the opposite port is returned to tank
All Blocked	All ports blocked. Case Drain Required	Operates a cylinder port while the opposite port is returned to tank



SV-100 Valve Pressure Drop and Fluid Velocity



SV-100 Handle Torque (lb.-in.)

Rotor Type	At 1500 psi	At 3000 psi
	Supply Pressure	Supply Pressure
Selector	151	240
Bypass*	230	360

*Note: Higher torque is a result of having two supply pressures from C1 and C2

SV-100/6K Handle Torque (lb.-in.)

Rotor Type	At 1500 psi	At 3000 psi	At 5000 psi	At 6000 psi
	Supply Pressure	Supply Pressure	Supply Pressure	Supply Pressure
Selector	144	210	276	300
Bypass*	250	360	480	480

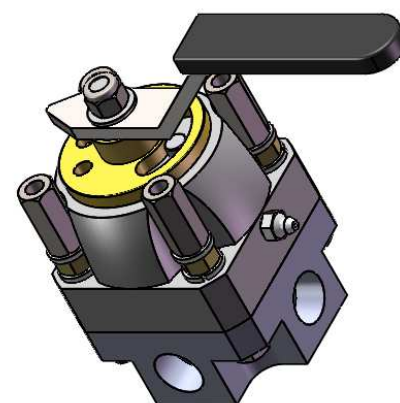
*Note: Higher torque is a result of having two supply pressures from C1 and C2

Model Number Configurator

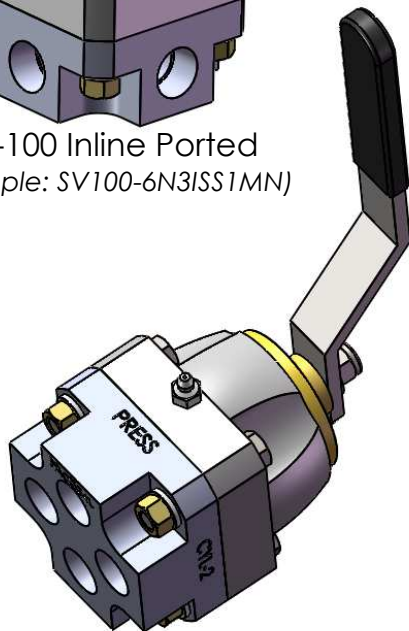
Basic Size	Port Size	Type of Ports	Pressure Rating (PSI)	Port Location	Bolts	Rotor Flow Pattern	Valve/Actuator Positions	Actuation Type	Handle	O-Ring	Actuator Cylinder Orientation ²	Nameplate Add-on
SV100-	6 3/4"	N NPT	2 1500	I Inline / Side	S Std Short	S Selector	1 3-Pos.	N/A (see add-on)	M Standard Manual	N Buna-N	None (leave empty)	-0 Blank
	8 1"	S SAE	3 3000	B Bottom	L Long	O Open Center	2 2-Pos. 90°		R Actuator Cylinder	V Viton	-AL Air Cylinder, Left Mounted	-1 Pipe Ram
		M Manifold	6 6000		P Panel Mount	M Manipulator	3 2-Pos. 45° CW		S Spring Centered	E EPR	-AR Air Cylinder, Right Mounted	-2 Blind Ram
		B Subplate ¹			N None ³	B Bypass	4 2-Pos. 45° CCW		L Pin Lock Detent		-HL Hyd. Cylinder, Left Mounted	-3 Shear Ram
		C Code 61/62 ¹				A All Blocked ¹			W Wing Handle		-HR Hyd. Cylinder, Right Mounted	-4 Annular
												-5 Choke Line
												-6 Kill Line
												-7 Hi-Lo Bypass
												-8 HCR
												-9 Flow Line
SVX100-	6 3/4"	N NPT	2 1500	I Inline / Side		S Selector	1 2-Pos. 90°	A Air - Direct Piloted	S Straight ⁴	N Buna-N		See Above
	8 1"	S SAE	3 3000	B Bottom		O Open Center	2 2-Pos. 45° CW	H Hydraulic - Direct Piloted	W Wing ⁴	V Viton		
		M Manifold	6 6000		N/A	M Manipulator	3 3-Pos. 90°	R Air - Solenoid Piloted	N Indicator ³	E EPR	N/A	
		B Subplate ¹				B Bypass	4 3-Pos. 90° -	U Hydraulic - Solenoid Piloted				
		C Code 61/62 ¹				A All Blocked ¹	Spring Centered					
							5 2-Pos. 45° CCW					
							6 2-Pos. 45° CW - Spring Centered					
							7 2-Pos. 45° CCW - Spring Centered					

¹ Not a standard Option² For Manifold Mount Option³ No manual override⁴ Manual override to center position (3rd position for 2-Pos SVX actuators)

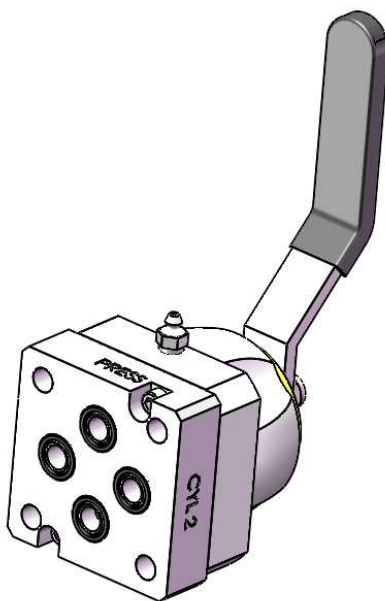
SV-100 Inline Ported
(Example: SV100-6N3ISS1MN)



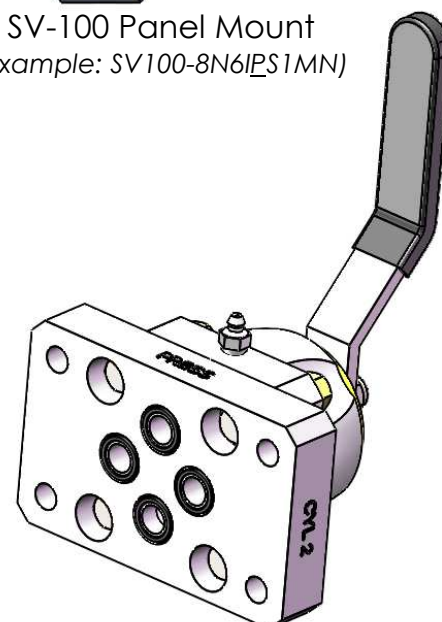
SV-100 Panel Mount
(Example: SV100-8N6IPS1MN)



SV-100 Bottom Ported
(Example: SV100-8N3BSS1MN)



SV-100 Manifold Ported
(Example: SV100-8M3BSS1MN)



SV-100 Subplate Ported
(Example: SV100-8S3BSS1MN)



PROPRIETARY AND CONFIDENTIAL

THE INFORMATION CONTAINED IN THIS DRAWING IS THE SOLE PROPERTY OF PacSeal.
ANY REPRODUCTION IN PART OR AS A WHOLE WITHOUT THE WRITTEN PERMISSION OF PacSeal IS PROHIBITED.

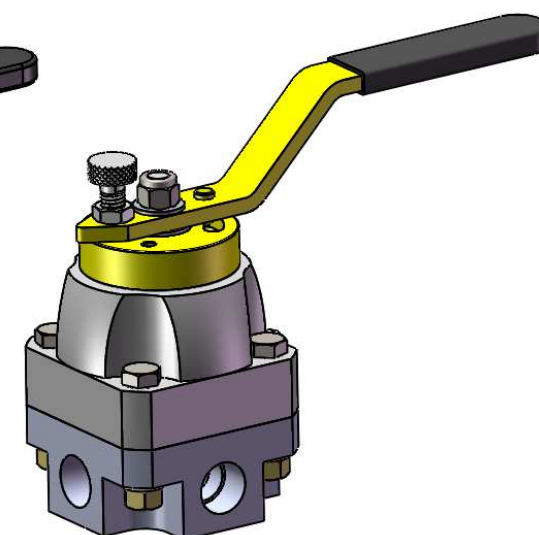
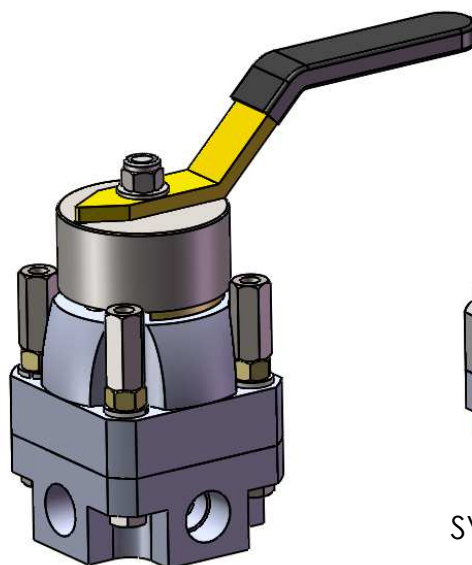
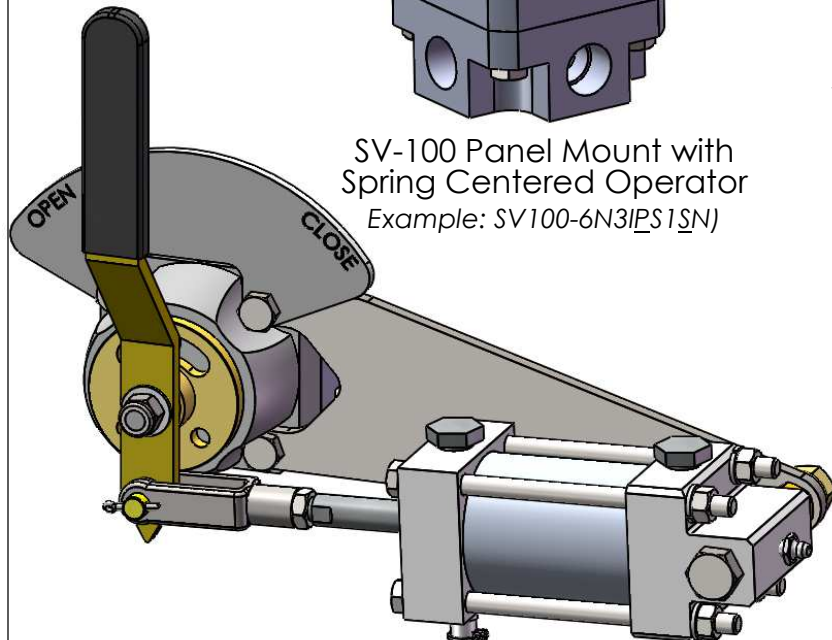
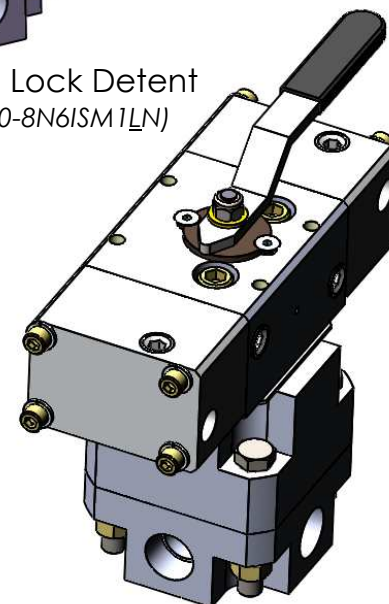
TITLE **SV-100 Porting Configurations Overview**

SIZE **A** REV **6**

SHEET 4 OF 16

Model Number Configurator

Basic Size	Port Size	Type of Ports	Pressure Rating (PSI)	Port Location	Bolts	Rotor Flow Pattern	Valve/Actuator Positions	Actuation Type	Handle	O-Ring	Actuator Cylinder Orientation ²	Nameplate Add-on
SV100-	6 3/4"	N NPT	2 1500	I Inline / Side	S Std Short	S Selector	1 3-Pos.	N/A (see add-on)	M Standard Manual	N Buna-N	None (leave empty)	-0 Blank
	8 1"	S SAE	3 3000	B Bottom	L Long	O Open Center	2 2-Pos. 90°		R Actuator Cylinder	V Viton	-AL Air Cylinder, Left Mounted	-1 Pipe Ram
		M Manifold	6 6000		P Panel Mount	M Manipulator	3 2-Pos. 45° CW		S Spring Centered	E EPR	-AR Air Cylinder, Right Mounted	-2 Blind Ram
		B Subplate ¹			N None ³	B Bypass	4 2-Pos. 45° CCW		L Pin Lock Detent		-HL Hyd. Cylinder, Left Mounted	-3 Shear Ram
		C Code 61/62 ¹				A All Blocked ¹			W Wing Handle		-HR Hyd. Cylinder, Right Mounted	-4 Annular
												-5 Choke Line
												-6 Kill Line
												-7 Hi-Lo Bypass
												-8 HCR
												-9 Flow Line
SVX100-	6 3/4"	N NPT	2 1500	I Inline / Side		S Selector	1 2-Pos. 90°	A Air - Direct Piloted	S Straight ⁴	N Buna-N		See Above
	8 1"	S SAE	3 3000	B Bottom		O Open Center	2 2-Pos. 45° CW	H Hydraulic - Direct Piloted	W Wing ⁴	V Viton		
		M Manifold	6 6000		N/A	M Manipulator	3 3-Pos. 90°	R Air - Solenoid Piloted	N Indicator ²	E EPR	N/A	
		B Subplate ¹				B Bypass	4 3-Pos. 90° - Spring Centered	U Hydraulic - Solenoid Piloted				
		C Code 61/62 ¹				A All Blocked ¹	5 2-Pos. 45° CCW					
							6 2-Pos. 45° CW - Spring Centered					
							7 2-Pos. 45° CCW - Spring Centered					

¹ Not a standard Option² For Manifold Mount Option³ No manual override⁴ Manual override to center position (3rd position for 2-Pos SVX actuators)SV-100 with Pin Lock Detent
(Example: SV100-8N6ISM1LN)SV-100 Panel Mount with Spring Centered Operator
(Example: SV100-6N3IPS1SN)SVX-100 with 2 Pos. 90° Air Actuation
(Example: SVX100-8N3IS1ASN)SV-100 with Air Cylinder Actuator
(Example: SV100-6N3ISS1RN-AR0)

PROPRIETARY AND CONFIDENTIAL

THE INFORMATION CONTAINED IN THIS DRAWING IS THE SOLE PROPERTY OF PacSeal.
ANY REPRODUCTION IN PART OR AS A WHOLE WITHOUT THE WRITTEN PERMISSION OF PacSeal IS PROHIBITED.

TITLE **SV-100 Operator Configurations Overview**

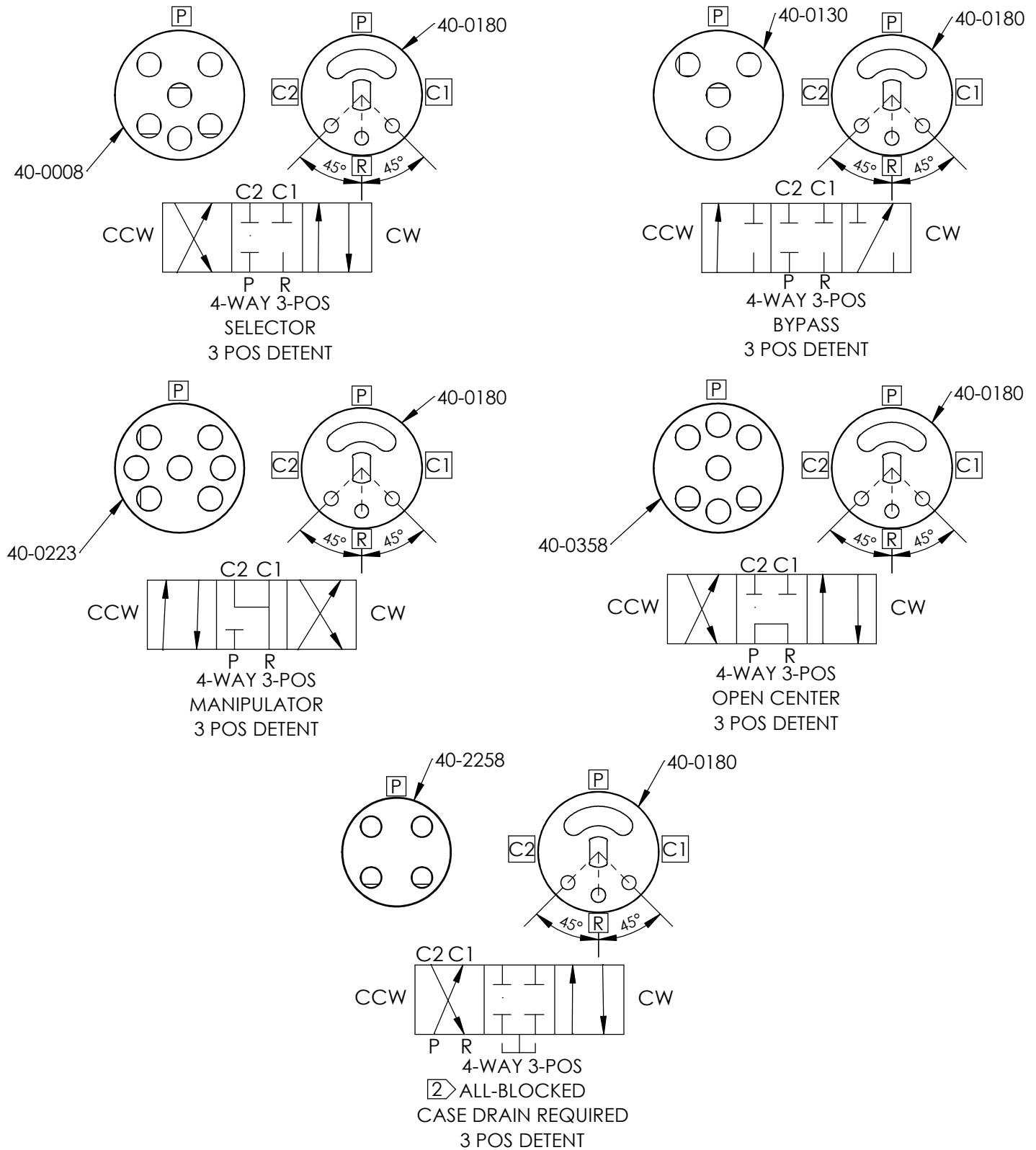
SIZE **A**

REV **6**

SHEET 5 OF 16

Notes:

1. Rotor and Detent Disc Part No.'s displayed
2. Not a standard stock item

**PROPRIETARY AND CONFIDENTIAL**

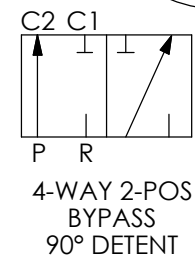
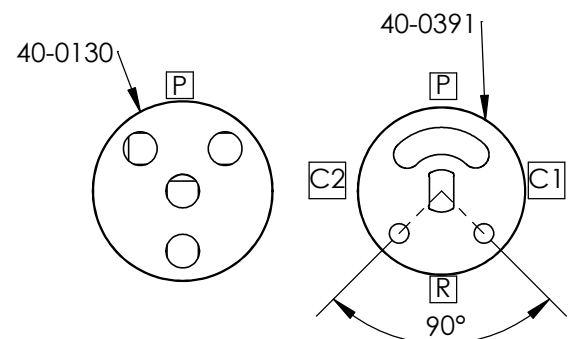
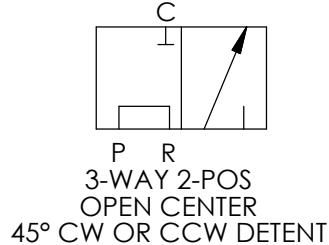
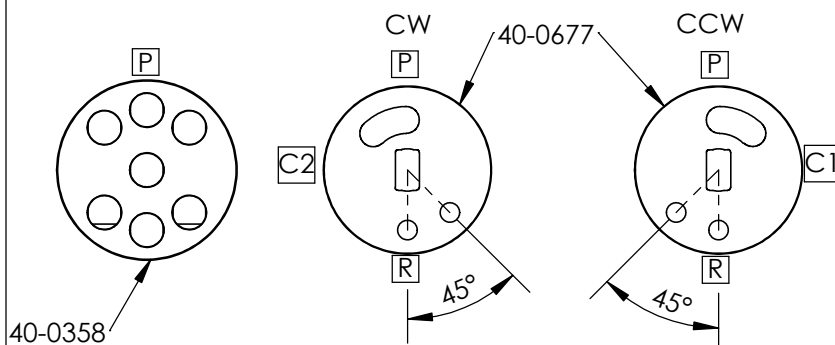
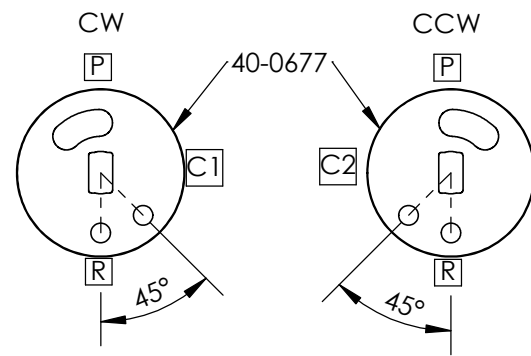
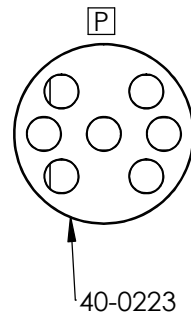
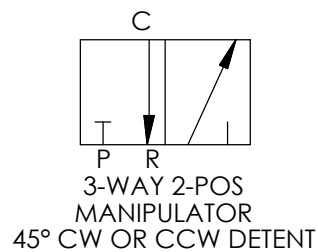
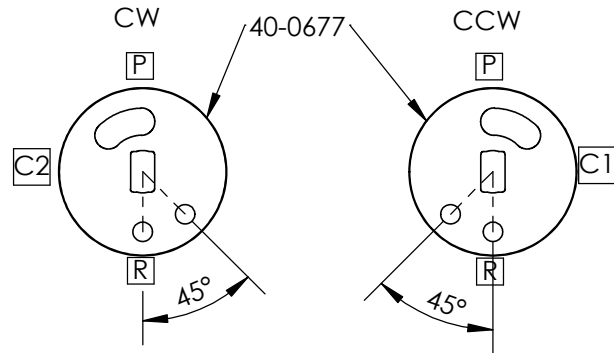
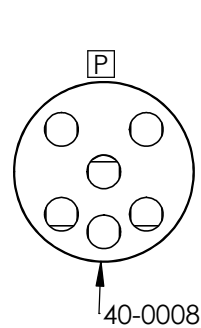
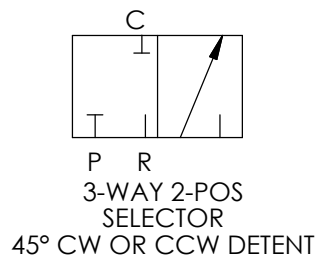
THE INFORMATION CONTAINED IN THIS DRAWING IS THE SOLE
PROPERTY OF PacSeal.
ANY REPRODUCTION IN PART OR AS A WHOLE WITHOUT THE
WRITTEN PERMISSION OF PacSeal IS PROHIBITED.

TITLE
**SV-100 Rotor Flow and
Detent Disc
3-Position Options**

SIZE A	REV 6
SHEET 6 OF 16	

Notes:

- Rotor and Detent Disc Part No.'s displayed



PACSEAL →
← **HYDRAULICS**

PROPRIETARY AND CONFIDENTIAL
THE INFORMATION CONTAINED IN THIS DRAWING IS THE SOLE
PROPERTY OF PacSeal.
ANY REPRODUCTION IN PART OR AS A WHOLE WITHOUT THE
WRITTEN PERMISSION OF PacSeal IS PROHIBITED.

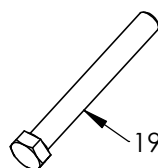
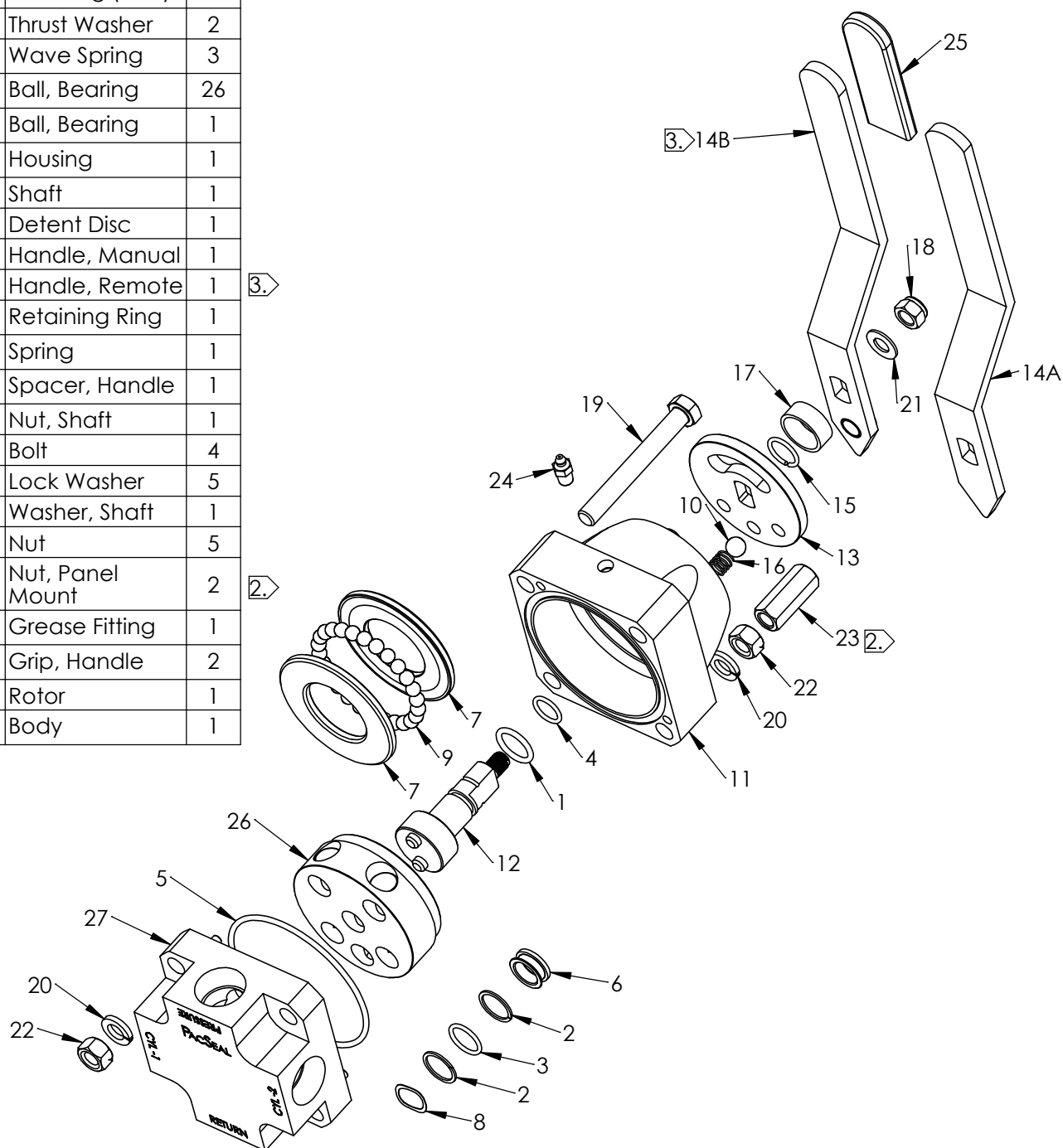
TITLE
**SV-100 Rotor Flow and
Detent Disc
2-Position Options**

SIZE A	REV 6
SHEET 7 OF 16	

ITEM NO.	PART NUMBER	DESCRIPTION	QTY.
1	23-1122	O-Ring	1
2	23-1331	Backup Ring	6
3	23-1332	O-Ring	3
4	23-1352	O-Ring	1
5	23-1363	O-Ring	1
6A	40-0007	Seal Ring (3 ksi)	3
6B	40-0825	Seal Ring (6 ksi)	3
7	40-0009	Thrust Washer	2
8	40-0027	Wave Spring	3
9	40-0049	Ball, Bearing	26
10	40-0174	Ball, Bearing	1
11	40-0175	Housing	1
12	40-0178	Shaft	1
13	40-0180	Detent Disc	1
14A	40-0281	Handle, Manual	1
14B	40-0284	Handle, Remote	1
15	40-0288	Retaining Ring	1
16	40-0295	Spring	1
17	40-0773	Spacer, Handle	1
18	50-0093	Nut, Shaft	1
19	50-0100	Bolt	4
20	50-0104	Lock Washer	5
21	50-0108	Washer, Shaft	1
22	50-0110	Nut	5
23	50-0115	Nut, Panel Mount	2
24	50-0176	Grease Fitting	1
25	50-0236	Grip, Handle	2
26	Note 4	Rotor	1
27	Note 5	Body	1

Notes:

1. Standard Inline Ported SV-100 shown for illustration purposes. (Refer to Model Configuration for options.)
2. Panel Mount Option.
3. Remote Handle Option
4. See sheets 6-7 "Rotor and Detent Shift Options" for replacement parts.
5. See sheet 9 "SV-100 Body Porting Options" for Bodyoption part numbers
6. See sheets 10-16 for other operator and actuator options.
7. Contact PacSeal for Viton or EPR O-rings.
8. Refer to SV-100 Maintenance Instructions for more details.



PACSEAL →
← **HYDRAULICS**

PROPRIETARY AND CONFIDENTIAL

THE INFORMATION CONTAINED IN THIS DRAWING IS THE SOLE PROPERTY OF PacSeal. ANY REPRODUCTION IN PART OR AS A WHOLE WITHOUT THE WRITTEN PERMISSION OF PacSeal IS PROHIBITED.

TITLE

**SV-100
General Assembly
Overview**

SIZE

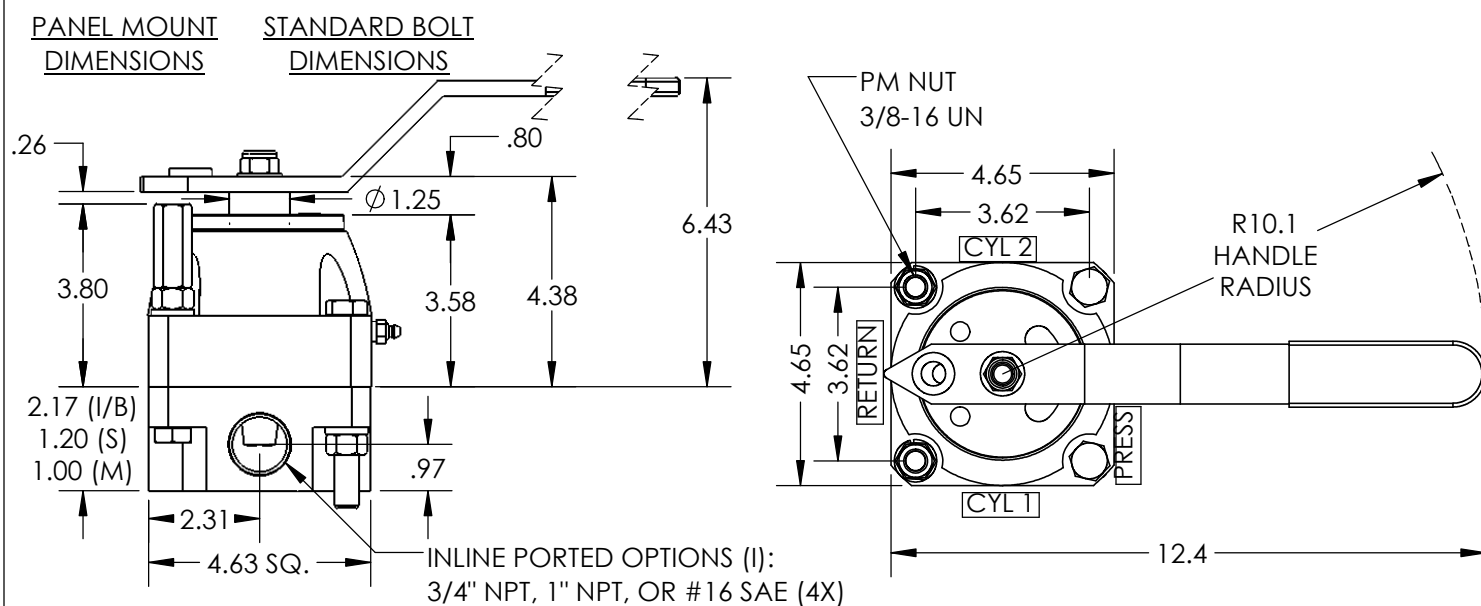
A

REV

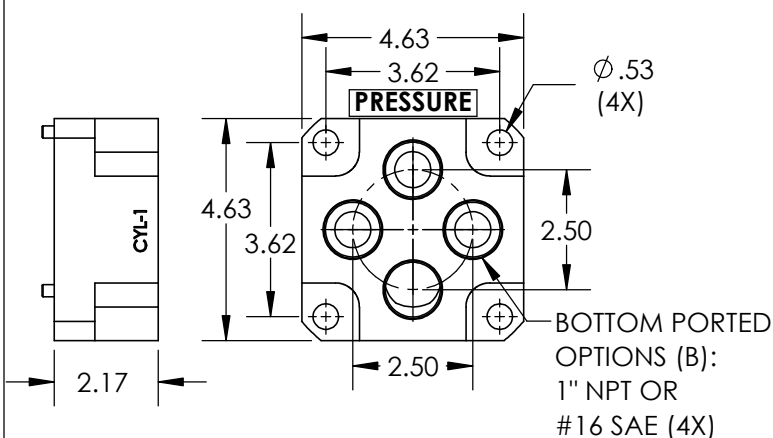
6

SHEET 8 OF 16

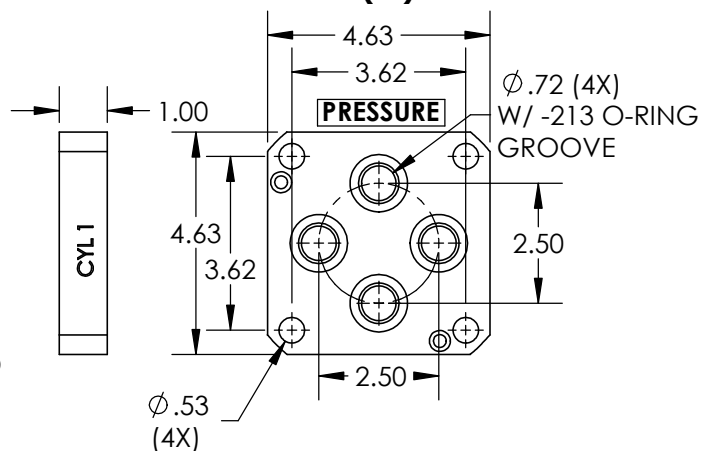
NPT or SAE Inline Ported (I) with Manual Operator



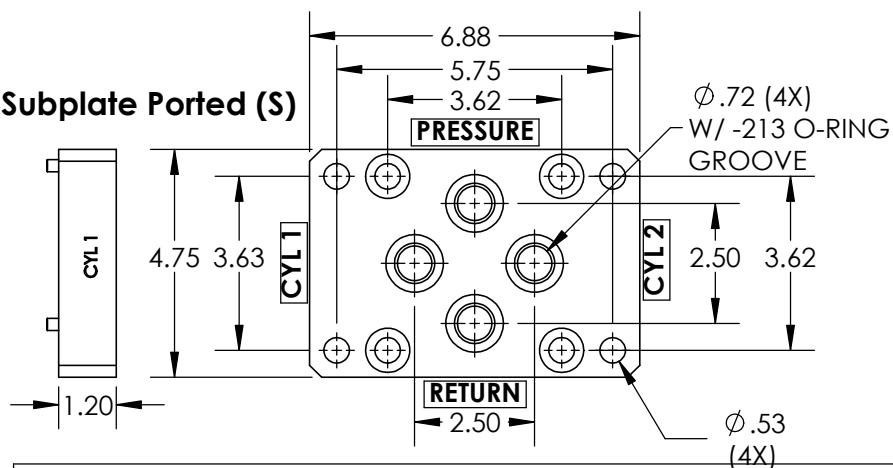
NPT or SAE Bottom Ported (B)



Manifold Ported (M)



Subplate Ported (S)



Body Option Part Numbers

Body Type	NPT Body Part No.	SAE Body Part No.
Inline [3/4"] (I)	40-0983	N/A
Inline [1"] (I)	40-0982	40-1093
Bottom (B)	40-2547	40-2336
Manifold (M)	40-1109	
Subplate (S)	40-0821	

Weight (lb.) of Valve Porting Options

Inline (I)	23
Bottom (B)	23
Manifold (M)	20
Subplate (S)	24

PACSEAL →
← **HYDRAULICS**

PROPRIETARY AND CONFIDENTIAL
THE INFORMATION CONTAINED IN THIS DRAWING IS THE SOLE
PROPERTY OF PacSeal.
ANY REPRODUCTION IN PART OR AS A WHOLE WITHOUT THE
WRITTEN PERMISSION OF PacSeal IS PROHIBITED.

TITLE
**SV-100 Porting Options
w/ Manual Operator
Installation Drawing**

SIZE
A

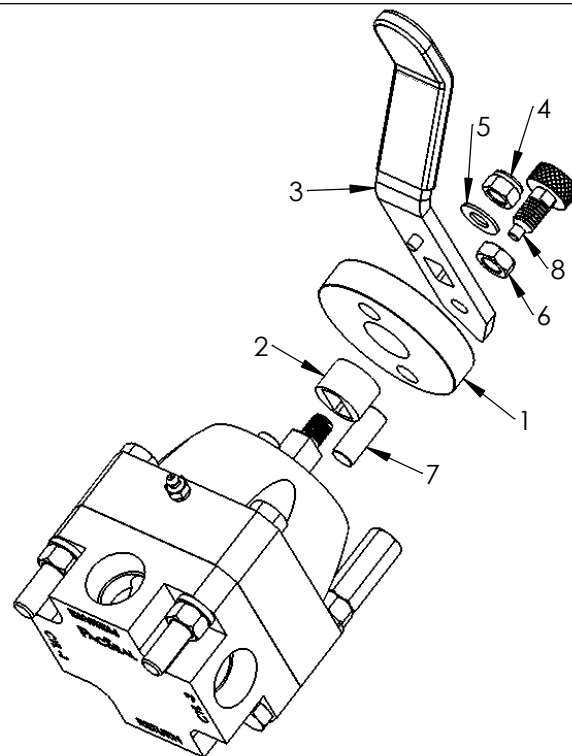
REV
6

SHEET 9 OF 16

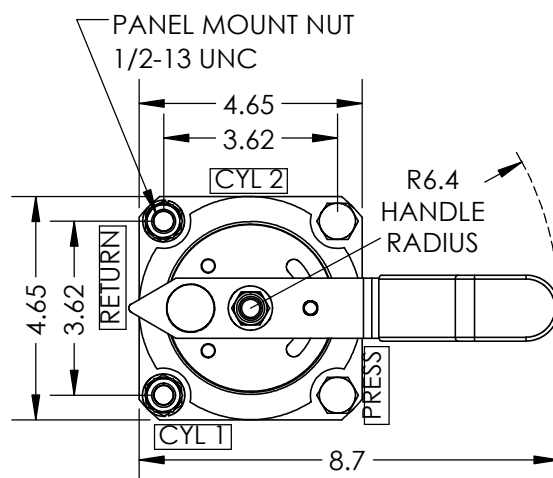
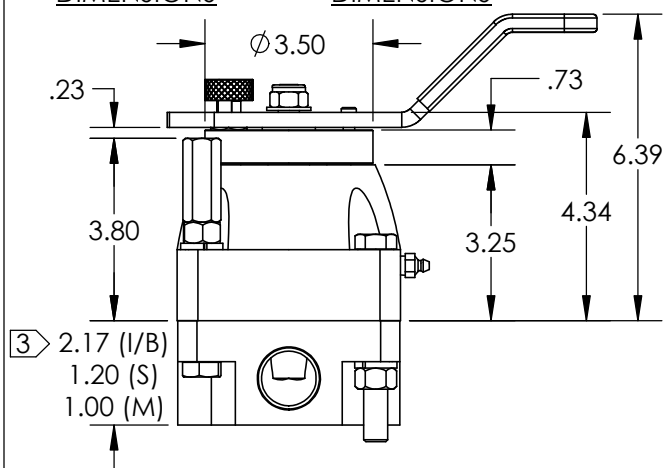
ITEM NO.	PART NUMBER	DESCRIPTION	QTY.
1	40-3635	Detent Plate	1
2	40-3637	Spacer	1
3	40-3882	Handle Ass'y , SV-100 (Short)	1
4	50-0093	Nut, Shaft	1
5	50-0108	Washer, Shaft	1
6	50-0394	Jam Nut	1
7	50-0521	Dowel Pin	1
8	50-0542	Retractable Spring Plunger	1

Notes:

1. Pin Lock Detent operator prevents accidental shifting and ensures two-handed operation.
- ② Can easily be retrofitted in field - reference P/N 40-3639 for Pin Lock Detent Kit.
- ③ See "SV-100 Porting Options with Manual Operator Installation Drawing" (Sheet 9) for other porting details.

**② Conversion Instructions:**

1. Ensure that the valve is not receiving hydraulic pressure
2. Remove the existing Locknut, Washer, Handle, Detent Disc, Spring, and Ball
3. Add the Pin (7) to the empty hole
4. Align the Detent Plate (1) with the two pins to match the drawing
5. Insert the Spacer (2) into the Detent Plate (1)
6. Assemble the Handle (3) with its pin inside the slot
7. Add the Washer (5) then tighten the Locknut (4) to the Shaft
8. Thread the jam nut (6) to the top of the Retractable Spring Plunger (8)
9. Thread the Retractable Spring Plunger to the Handle until the plunger just makes contact with the bottom of the hole
10. Tighten the jam nut of the plunger to the handle
11. Dry test each position to ensure that the Retractable Spring Plunger is fully engaged in each hole

**PANEL MOUNT
DIMENSIONS****STANDARD BOLT
DIMENSIONS****Weight (lb.) of Valve
Porting Options**

Inline (I)	26
Bottom (B)	26
Manifold (M)	23
Subplate (S)	27

**PROPRIETARY AND CONFIDENTIAL**

THE INFORMATION CONTAINED IN THIS DRAWING IS THE SOLE PROPERTY OF PacSeal. ANY REPRODUCTION IN PART OR AS A WHOLE WITHOUT THE WRITTEN PERMISSION OF PacSeal IS PROHIBITED.

TITLE SV-100 Pin Lock
Detent Operator
Installation and
Assembly Drawing

SIZE
A

REV
6

SHEET 10 OF 16

ITEM NO.	PART NUMBER	DESCRIPTION	QTY.
1	23-1326	O-Ring	1
2	40-1370	Housing, SVx-100	1
3A	40-1447	Straight Handle	1
3B	40-2746	Wing Handle	1
4	40-2381	Detent, SVx-100	1
5	40-2695	Shaft, SVx-100	1
6	40-2732	Air Actuator Ass'y, SVx-100	1
7	40-2744	Aluminum Gasket	1
8	50-0079	Bolt	4
9	50-0093	Locknut	1
10	50-0103	Lock Washer	4
11	50-0104	Lock Washer	5
12	50-0108	Washer, Shaft	1
13	50-0402	Key	1

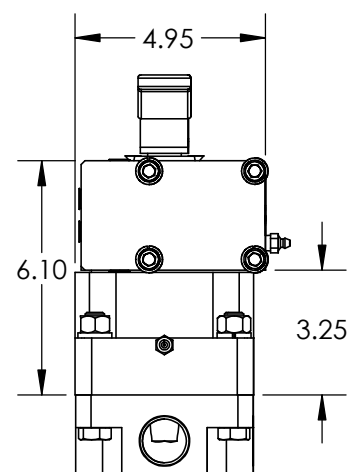
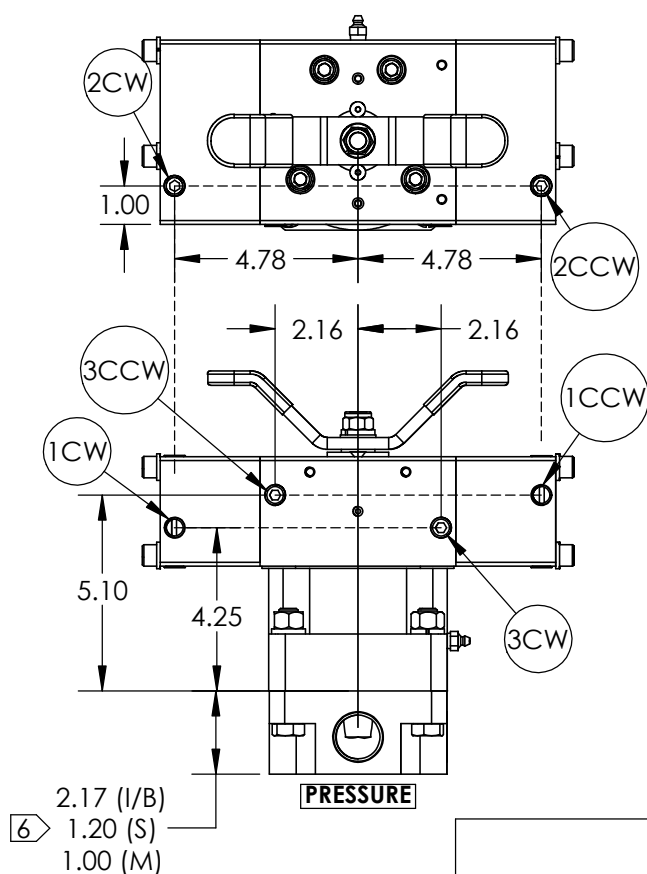
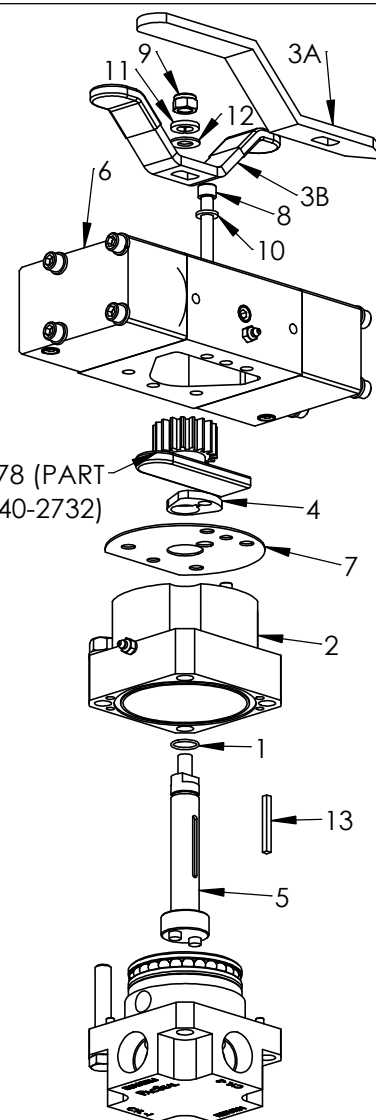
Notes:

- Model displays SVX with 2-Position 90° Direct Air actuation.
- Center (3rd) position is accomplished with manual override.
- Air Actuator working pressure - 0 to 150 psi
- Actuator material - Aluminum (anodized)
- Retrofitting an existing valve is not an option.
- See "SV-100 Porting Options with Manual Operator Installation Drawing" (Sheet 9) for other porting details.
- Solenoid piloted porting option not shown.

1/4 NPT Air Inlet Porting Location Options

Clockwise (CW) Option #	Counter-clockwise (CCW) Option #
1CW	1CCW
2CW	2CCW
3CW	3CCW

40-2378 (PART OF 40-2732)

**Weight (lb.) of Valve Porting Options**

Inline (I)	39
Bottom (B)	39
Manifold (M)	36
Subplate (S)	40

PACSEAL →
← **HYDRAULICS**

PROPRIETARY AND CONFIDENTIAL

THE INFORMATION CONTAINED IN THIS DRAWING IS THE SOLE PROPERTY OF PacSeal. ANY REPRODUCTION IN PART OR AS A WHOLE WITHOUT THE WRITTEN PERMISSION OF PacSeal IS PROHIBITED.

TITLE **SVX-100 2-Position 90° Direct Air Actuation Installation and Assembly Drawing**

SIZE **A**

REV **6**

SHEET 11 OF 16

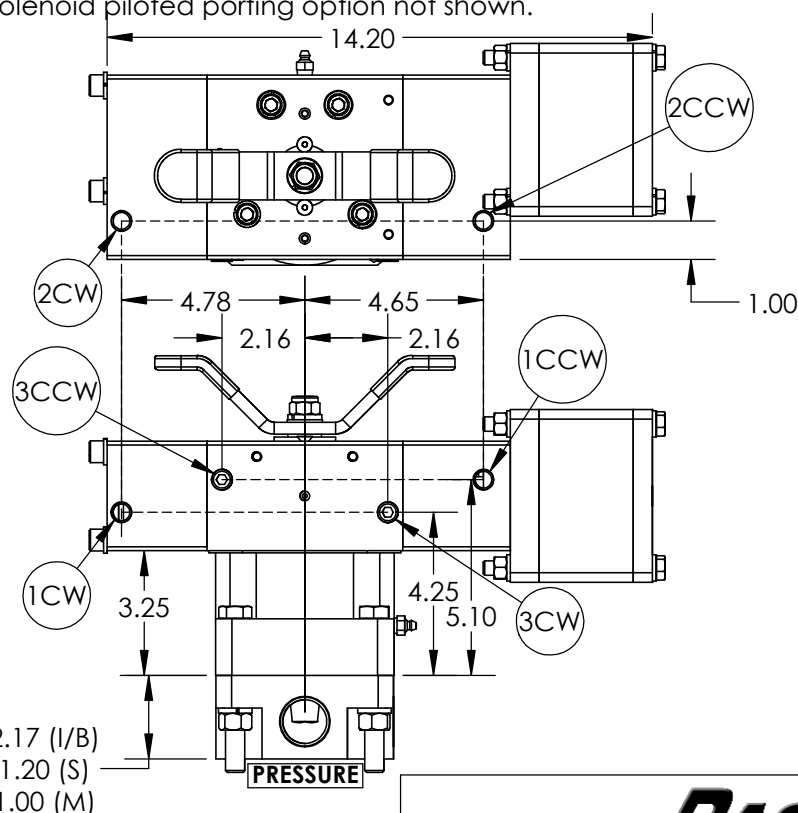
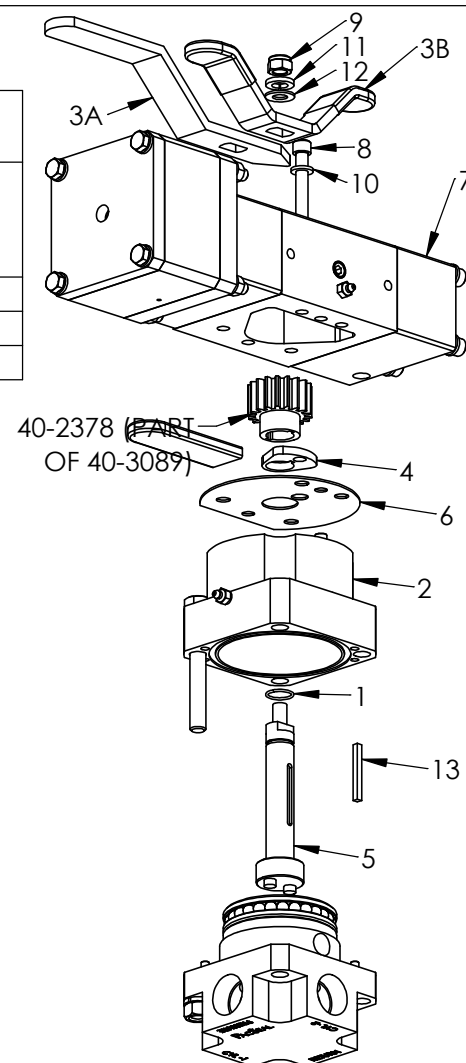
ITEM NO.	PART NUMBER	DESCRIPTION	QTY.
1	23-1528	O-Ring	1
2	40-1370	Housing, SVx-100	1
3A	40-1447	Straight Handle	1
3B	40-2746	Wing Handle	1
4	40-2381	Detent, SVx-100	1
5	40-2695	Shaft, SVx-100	1
6	40-2744	Aluminum Gasket	1
7	40-3089	3-Pos Air Actuator Ass'y, SVx-100	1
8	50-0079	Bolt	4
9	50-0093	Locknut	1
10	50-0103	Lock Washer	4
11	50-0104	Lock Washer	5
12	50-0108	Washer, Shaft	1
13	50-0402	Key	1

Notes:

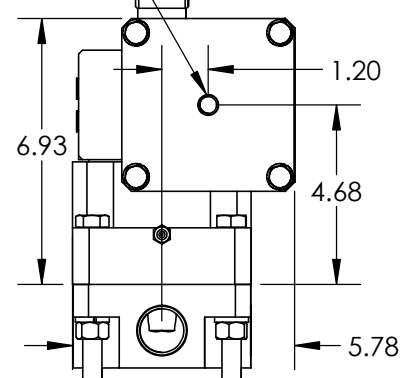
- Model displays SVX with 3-Position 90° Direct Air actuation.
- For center position, first apply air pressure to "CENTERING PORT", then apply air pressure to a "CW" port.
- For 2-position operation, apply air to "CW" and "CCW" ports only.
- Air Actuator working pressure - 0 to 150 psi
- Actuator material - Aluminum (anodized)
- Retrofitting an existing valve is not an option.
- See "SV-100 Porting Options with Manual Operator Installation Drawing" (Sheet 9) for other porting details.
- Solenoid piloted porting option not shown.

1/4 NPT Air Inlet Porting Location Options

Clockwise (CW) Option #	Counter-clockwise (CCW) Option #
1CW	1CCW
2CW	2CCW
3CW	3CCW



② 1/4 NPT CENTERING PORT

**Weight (lb.) of Valve Porting Options**

Inline (I)	48
Bottom (B)	48
Manifold (M)	45
Subplate (S)	49

PACSEAL →
← **HYDRAULICS**

PROPRIETARY AND CONFIDENTIAL

THE INFORMATION CONTAINED IN THIS DRAWING IS THE SOLE PROPERTY OF PacSeal. ANY REPRODUCTION IN PART OR AS A WHOLE WITHOUT THE WRITTEN PERMISSION OF PacSeal IS PROHIBITED.

TITLE **SVX-100 3-Position 90° Direct Air Actuation Installation and Assembly Drawing**

SIZE **A**

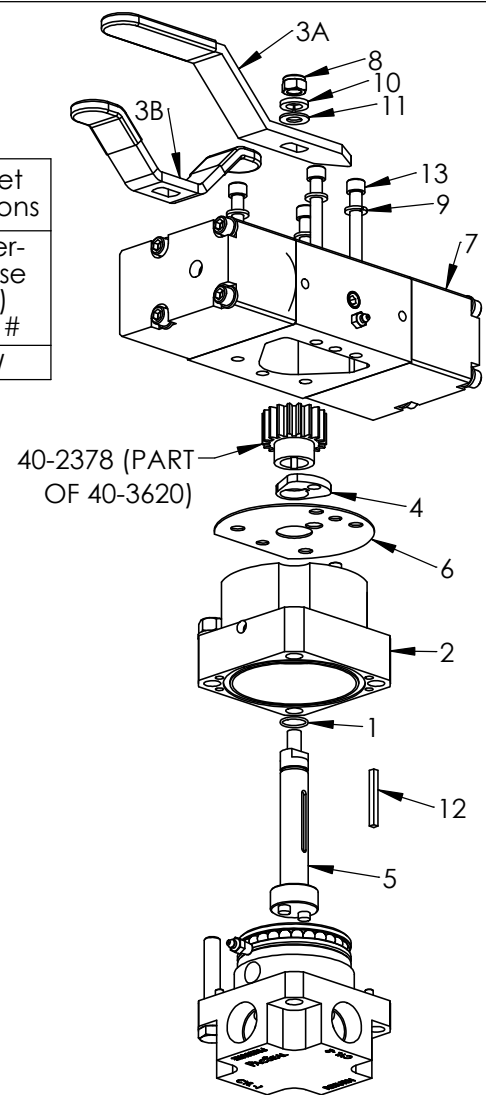
REV **6**

SHEET 12 OF 16

ITEM NO.	PART NUMBER	DESCRIPTION	QTY.
1	23-1326	O-Ring	1
2	40-1370	Housing, SVx-100	1
3A	40-1447	Straight Handle	1
3B	40-2746	Wing Handle	1
4	40-2381	Detent, SVx-100	1
5	40-2695	Shaft, SVx-100	1
6	40-2744	Aluminum Gasket	1
7	40-3620	SVx-100 Hyd Actuator Ass'y	1
8	50-0093	Locknut	1
9	50-0103	Lock Washer	4
10	50-0104	Lock Washer	5
11	50-0108	Washer, Shaft	1
12	50-0402	Key	1
13	50-0518	Bolt	4

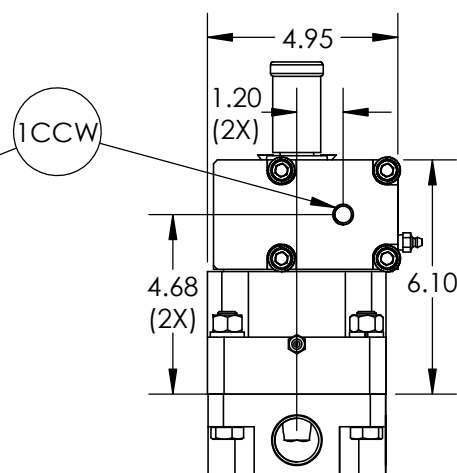
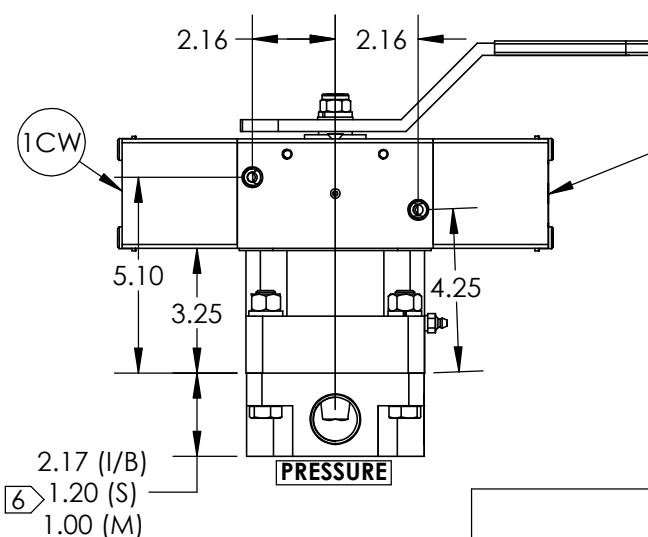
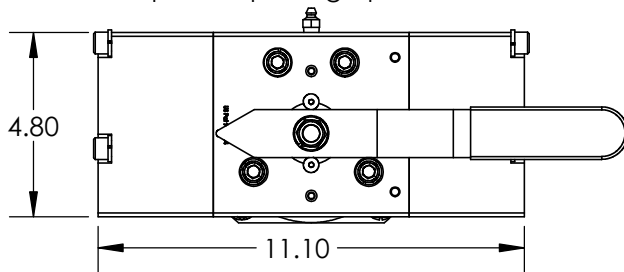
1/4 NPT Hydraulic Inlet Porting Location Options

Clockwise (CW) Option #	Counter- clockwise (CCW) Option #
1CW	1CCW



Notes:

- Model displays SVX with 2-Position 90° Direct Hydraulic actuation.
- Center (3rd) position is accomplished with manual override.
- Hydraulic Actuator working pressure - 800 to 1500 psi
- Actuator material - Aluminum (anodized)
- Retrofitting an existing valve is not an option.
- See "SV-100 Porting Options with Manual Operator Installation Drawing" (Sheet 9) for other porting details.
- Solenoid piloted porting option not shown.



Weight (lb.) of Valve Porting Options

Inline (I)	41
Bottom (B)	41
Manifold (M)	38
Subplate (S)	42

PACSEAL →
← **HYDRAULICS**

PROPRIETARY AND CONFIDENTIAL

THE INFORMATION CONTAINED IN THIS DRAWING IS THE SOLE PROPERTY OF PacSeal. ANY REPRODUCTION IN PART OR AS A WHOLE WITHOUT THE WRITTEN PERMISSION OF PacSeal IS PROHIBITED.

TITLE **SVX-100 2-Position 90°
Direct Hydraulic
Actuation Installation
and Assembly Drawing**

SIZE
A

REV
6

SHEET 13 OF 16

ITEM NO.	PART NUMBER	DESCRIPTION	QTY.
1	23-1326	O-Ring	1
2	40-1370	Housing, SVx-100	1
3	40-2381	Detent, SVx-100	1
4	40-2695	Shaft, SVx-100	1
5	40-2744	Aluminum Gasket	1
6	40-3061	Hyd Actuator Ass'y, SVX-100	1
7	40-3165	Indicator	1
8	50-0093	Locknut	1
9	50-0103	Lock Washer	4
10	50-0104	Lock Washer	5
11	50-0108	Washer, Shaft	1
12	50-0402	Key	1
13	50-0518	Bolt	4

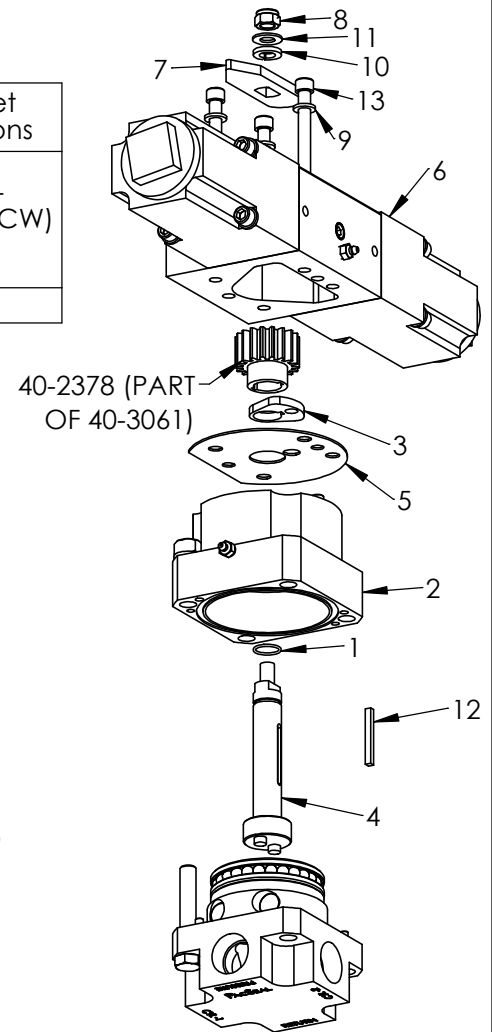
1/4 NPT Hydraulic Inlet
Porting Location Options

Clockwise
(CW)
Option #

Counter-
clockwise (CCW)
Option #

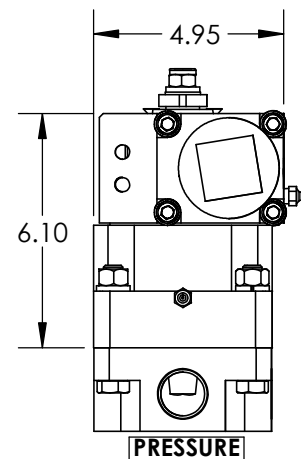
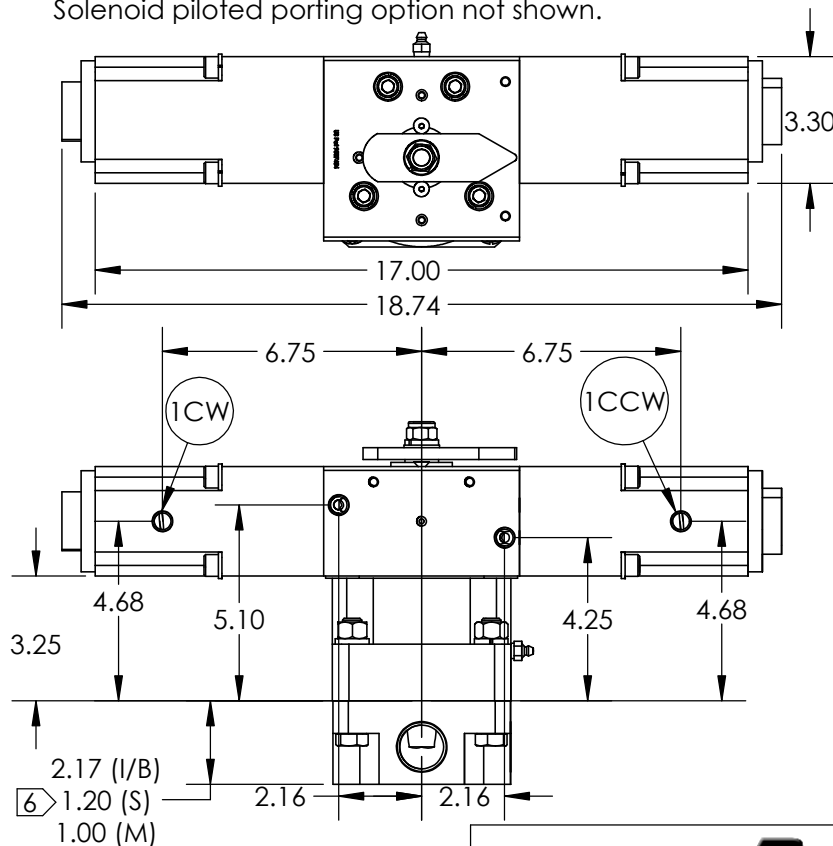
1CW

1CCW



Notes:

- Model displays SVX with 3-Position 90° Spring Centered Direct Hydraulic actuation.
- Center (3rd) position is accomplished when hydraulic pilot pressure is relieved.
- Hydraulic Actuator working pressure - 800 to 1500 psi.
- Actuator material - Aluminum (anodized)
- Retrofitting an existing valve is not an option.
- See "SV-100 Porting Options with Manual Operator Installation Drawing" (Sheet 9) for other porting details.
- Solenoid piloted porting option not shown.



Weight (lb.) of Valve Porting Options	
Inline (I)	59
Bottom (B)	59
Manifold (M)	56
Subplate (S)	60

PACSEAL →
← **HYDRAULICS**

PROPRIETARY AND CONFIDENTIAL

THE INFORMATION CONTAINED IN THIS DRAWING IS THE SOLE PROPERTY OF PacSeal. ANY REPRODUCTION IN PART OR AS A WHOLE WITHOUT THE WRITTEN PERMISSION OF PacSeal IS PROHIBITED.

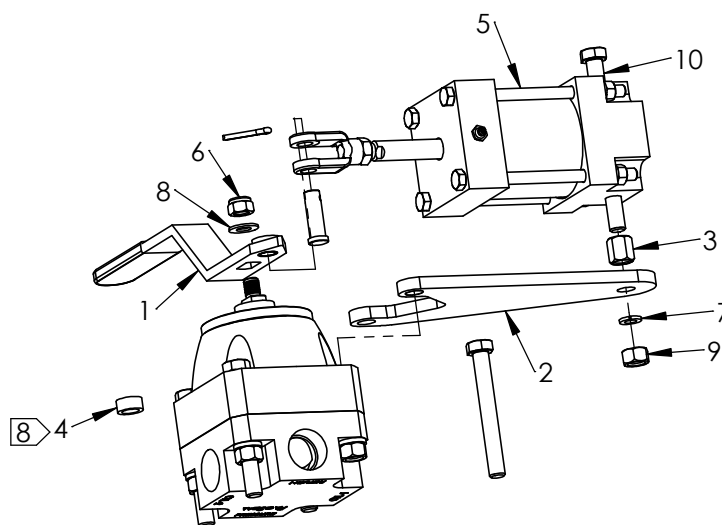
TITLE **SVX-100 3-Position 90° Spring Centered Direct Hydraulic Actuation Installation and Assembly Drawing**

SIZE
A

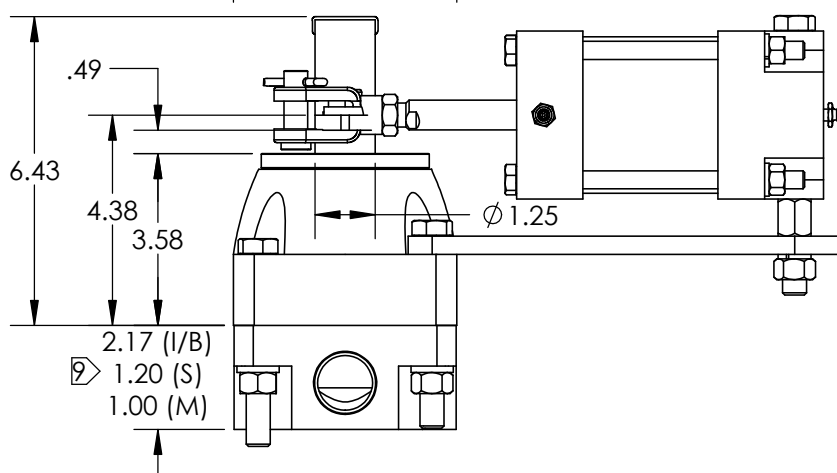
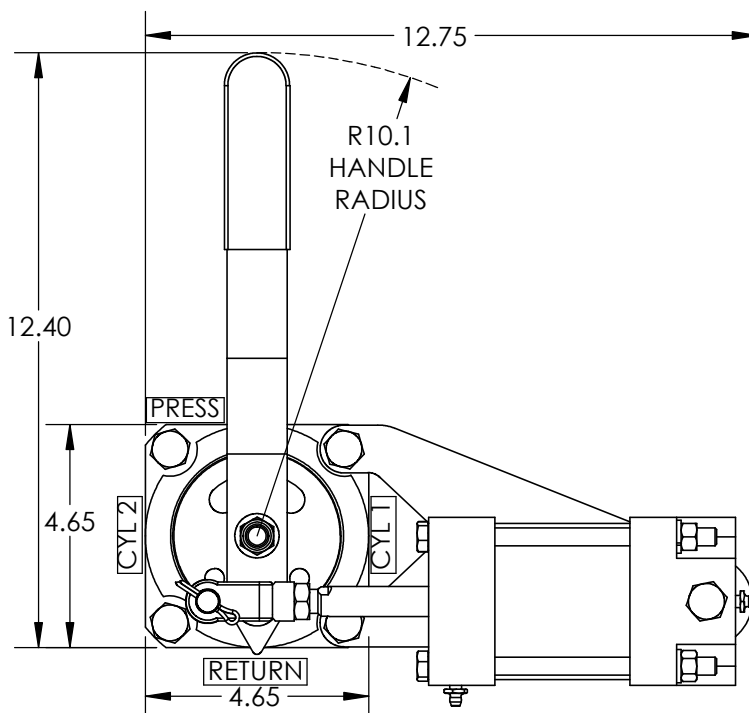
REV
6

SHEET 14 OF 16

ITEM NO.	PART NUMBER	DESCRIPTION	QTY.
1	40-0284	Handle, Remote	1
2	40-0455	Bracket	1
3	40-0558	Spacer Nut	1
4	40-0559	Spacer	1
5	40-3723	Air Actuator Cylinder Assembly, AAC-302	1
6	50-0093	Nut, Shaft	1
7	50-0103	Lock Washer	1
8	50-0108	Washer, Shaft	1
9	50-0110	Nut	1
10	50-0165	Bolt	1

**Notes:**

1. Model displays Right Mounted Air Cylinder Actuator
2. Cylinder Positions - 2
3. Cylinder Air working pressure - 80 to 150 psi
4. Cylinder Rating - 250 psi
5. Cylinder Stroke - 2.13 in.
6. Cylinder Bore/Rod - 3 X 5/8 in.
7. Actuator Material - Aluminum (anodized)
8. Spacer is only necessary if a name plate is used.
9. See "Porting Options with Manual Operator Installation Drawing" (Sheet 9) for installation dimensions of other porting options.

**Weight (lb.) of Valve Porting Options**

Inline (I)	34
Bottom (B)	34
Manifold (M)	31
Subplate (S)	35

PACSEAL →
← **HYDRAULICS**

PROPRIETARY AND CONFIDENTIAL

THE INFORMATION CONTAINED IN THIS DRAWING IS THE SOLE PROPERTY OF PacSeal. ANY REPRODUCTION IN PART OR AS A WHOLE WITHOUT THE WRITTEN PERMISSION OF PacSeal IS PROHIBITED.

TITLE
SV-100 Air Cylinder Actuator Installation and Assembly Drawing

SIZE
A

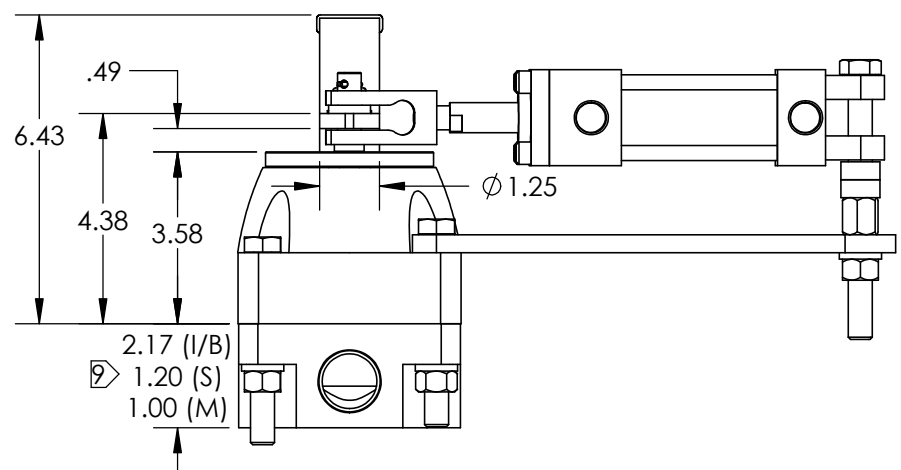
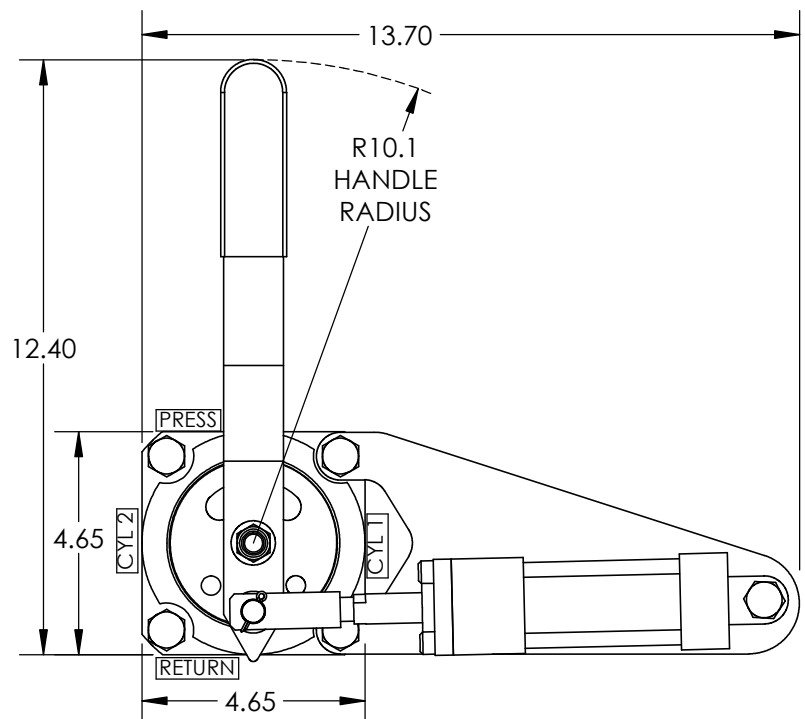
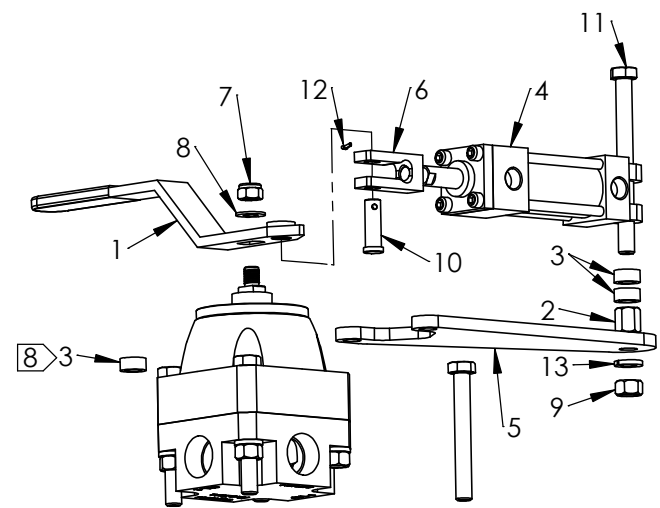
REV
6

SHEET 15 OF 16

ITEM NO.	PART NUMBER	DESCRIPTION	QTY.
1	40-0284	Handle, Remote	1
2	40-0558	Spacer Nut	1
3	40-0559	Spacer	3
4	40-1412	Peninsular LH3 Hyd Cylinder	1
5	40-1413	Bracket	1
6	40-2149	Clevis	1
7	50-0093	Nut, Shaft	1
8	50-0108	Washer, Shaft	1
9	50-0110	Nut	1
10	50-0145	Clevis Pin	1
11	50-0165	Bolt	1
12	50-0196	Cotter Pin	1
13	50-0374	Lock Washer	1

Notes:

- Model displays Right Mounted Hydraulic Cylinder Actuator
- Hydraulic working pressure - 500 to 1200 psi
- Cylinder Positions - 2
- Cylinder Rating - 1500 psi
- Cylinder Stroke - 2.13 in.
- Cylinder Bore/Rod - 1-1/2 X 5/8 in.
- Actuator Material - Carbon Steel
- Third Spacer is only necessary if a name plate is used.
- See "Porting Options with Manual Operator Installation Drawing" (Sheet 9) for installation dimensions of other porting options.



Weight (lb.) of Valve
Porting Options

Inline (I)	31
Bottom (B)	31
Manifold (M)	28
Subplate (S)	32

PACSEAL →
← **HYDRAULICS**

PROPRIETARY AND CONFIDENTIAL
THE INFORMATION CONTAINED IN THIS DRAWING IS THE SOLE
PROPERTY OF PacSeal.
ANY REPRODUCTION IN PART OR AS A WHOLE WITHOUT THE
WRITTEN PERMISSION OF PacSeal IS PROHIBITED.

**TITLE SV-100 Hydraulic
Cylinder Actuator
Installation and
Assembly Drawing**

SIZE A	REV 6
SHEET 16 OF 16	