



KR-150 Regulator Specifications Table of Contents

2. Specifications and Data Sheet
3. Configuration Overview
4. Regulator with Manual Operator Installation Drawing
5. Regulator with Failsafe Air Operator Installation Drawing
6. Regulator with Failsafe Hydraulic Operator Installation Drawing
7. Regulator with Hydraulic Pilot Operator Installation Drawing
8. High Pressure Output Regulator with Manual Operator Installation Drawing
9. High Pressure Output Regulator with High Torque Failsafe Air Operator Installation Drawing
10. High Pressure Output Regulator with Failsafe Hydraulic Operator Installation Drawing
11. Internal Override Bypass Options Installation Drawing
12. General Assembly Overview
13. L and H Model Configurations Assembly Drawing
14. D and W Model Configurations Assembly Drawing
15. P Model Configuration Assembly Drawing
16. Failsafe Air and Hydraulic Operators Assembly Drawing
17. High Pressure Output Adjustment Head Assembly Drawing
18. High Pressure Output Manual Operator Assembly Drawing
19. High Pressure Output Failsafe Air Operator Assembly Drawing
20. High Pressure Output Failsafe Hydraulic Operator Assembly Drawing
21. Internal Override Bypass Direct Operation Assembly Drawing
22. Internal Override Bypass with SV-25 Assembly Drawing
23. Internal Override Bypass with SVx-25 Assembly Drawing



All PacSeal Hydraulics' KR Pressure Regulators are designed with ShearFlo® metal-to-metal sealing technology.

ShearFlo® sealing technology features:

- High cycle life and anti-wear design is suitable for critical service applications, including contaminated fluids.
- Leak proof, contaminant resistant metal-to-metal seal is accomplished by lapping and polishing hardened stainless steel sealing elements to exacting standards of finish and flatness.
- The sealing elements are spring preloaded and pressure energized, which maintains contact between the two sealing surfaces at all times.

All KR Regulators are tested to PacSeal's strict quality control standards to ensure proper function and reliability. Every ShearFlo® sealing component in a repair kit is inspected to ensure trouble-free performance after field maintenance and repair.

PacSeal Hydraulics' KR Pressure Regulators serve as pressure reducing and regulating valves to maintain system pressure at a desired value (set pressure) which is below that of the supply pressure.

The operator controls the outlet pressure by modulating the compression of springs that act on a pressurized piston. This in turn balances the hydraulic load inside the body. The operator options are as follows:

- Manual
- Failsafe Air Motor with Manual Override
- Failsafe Hydraulic Motor with Manual Override
- Hydraulic Pilot

The internal override bypass operator provides a lean solution for tight space applications by allowing full accumulator pressure to be supplied downstream of the regulator without a dedicated 4-way bypass valve in the hydraulic circuit.

NOTE: To prevent hammering, the downstream hydraulic circuit must have adequate flow; such that the pipe/hose diameter matches that of the KR-150 outlet. To safeguard this further, an accumulator is recommended to be used downstream of the regulator's outlet.

General Specifications

Supply Port Size	1 in. NPT or SAE (2X)
Outlet Port Size	1-1/2 in. NPT or SAE
Vent Port Size	1 in. NPT or SAE (2X)
Working Pressure Options (Liquid)	3000, 5000, or 6000 psi
Regulated Outlet Pressure Options	See Product Configurator
Cv Factor Outlet	21
Cv Factor Vent	4.1
Rated Flow	200 GPM
Temperature Rating (Regulators and Failsafe Air Motors)	-40° to 250°F
Fluid Media	Hydraulic oil or lubricated water ¹
Weight	See installation drawings

Materials

ShearFlo Sealing Components (i.e. Rotor and Seal Rings)	400 series hardened stainless steel ¹
Body	400 series stainless steel
Flanges and Operators	Carbon Steel
Hardware	Coated Carbon Steel
O-rings	Buna-N (N), Viton (V), or EPR (E)
Backup Rings	Teflon

¹For water based media, special alloy seal rings may be required for optimum performance and durability - Contact PacSeal for details.

Model	Regulated Outlet Pressure [psi]	Regulated Outlet Pressure [psi]	Deadband Range [psi]*
L	3000/5000	300-1800	100-150
D	5000/6000	500-3000	200-300
H	5000/6000	500-3300	100-150
W	6000	700-4500	200-300
P	3000/5000/6000	50-6000	0-100

*Deadband is the difference between the set pressure and the actual outlet pressure that triggers the KR to open or vent. The deadband will vary depending on factors that influence the friction between the seal rings and flow plates, such as: type of fluid and lubricity properties, temperature, differential pressure between supply and regulated outlet, seal ring and flow plate wear condition, and lastly interpretation influenced by gauge sensitivity. The Reset Range or Hysteresis is within +/- 150 psi for all models.

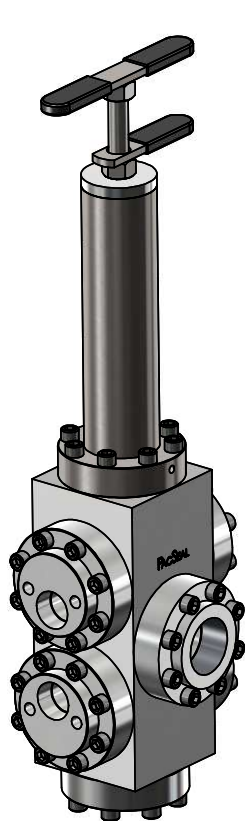
Model Number Configurator

Basic Model	Ports	Supply Pressure	Regulated Outlet Pressure		Operator	Internal Override Bypass
			Rated Range ²	Deadband		
KR-150	N NPT	3 3000 psi	L 300-1800 psi	100-150 psi	M Manual	-IO Direct
	S SAE	5 5000 psi			FSA Failsafe Air Motor	-IS with SV-25
	C Code-61 ¹	5 5000 psi	D 500-3000 psi	200-300 psi	FSH Failsafe Hydraulic Motor	-IX with SVx-25
	D Code-62 ¹	6 6000 psi	H 500-3300 psi	100-150 psi		
		6 6000 psi	W 700-4500 psi	200-300 psi		
		3, 5, or 6	P ³ 50-6000 psi	0-100 psi	H Hydraulic Pilot	Leave blank if N/A

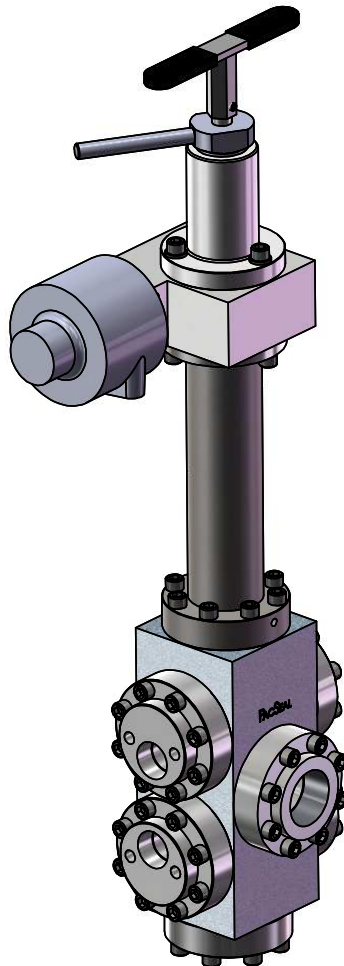
Notes: ¹Not a standard option - special order only

²Rated Regulated Outlet Pressure cannot exceed supply pressure. Absolute Outlet Pressure is 0 psi up to 25% above the maximum operating pressure.

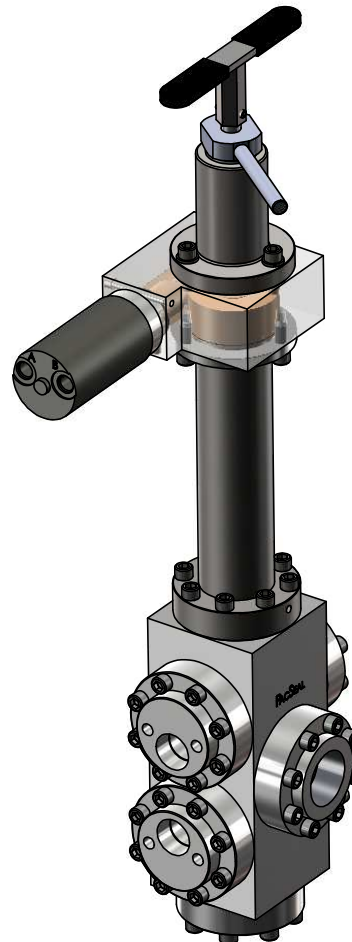
³Maximum rated regulated outlet pressure matches the supply pressure for a regulator with the Hydraulic Pilot operator



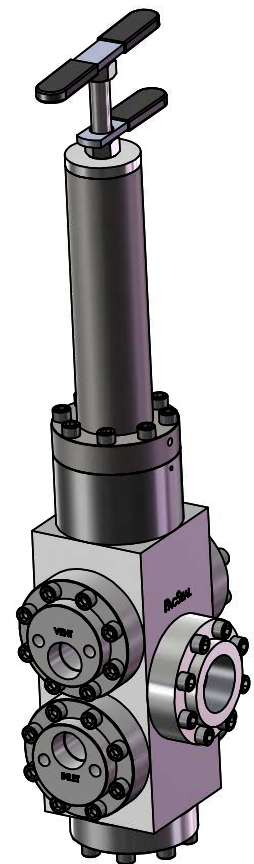
KR-150 Regulator with Manual Operator
Example: KR-150N3LM



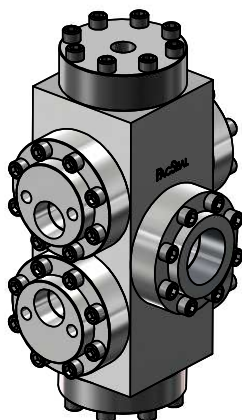
KR-150 Regulator with Failsafe Air Motor Operator
Example: KR-150S5DFSA



KR-150 Regulator with Failsafe Hydraulic Motor Operator
Example: KR-150S6HFSH



KR-150 Regulator with Direct Internal Override
Example: KR-150N5DM-IO



Hydraulic Pilot Operator
Example: KR-150S3PH

NOTES:

1. Displayed models are just a few examples of the many potential configurations



PROPRIETARY AND CONFIDENTIAL

THE INFORMATION CONTAINED IN THIS DRAWING IS THE SOLE PROPERTY OF PacSeal. ANY REPRODUCTION IN PART OR AS A WHOLE WITHOUT THE WRITTEN PERMISSION OF PacSeal IS PROHIBITED.

TITLE

Configuration Overview

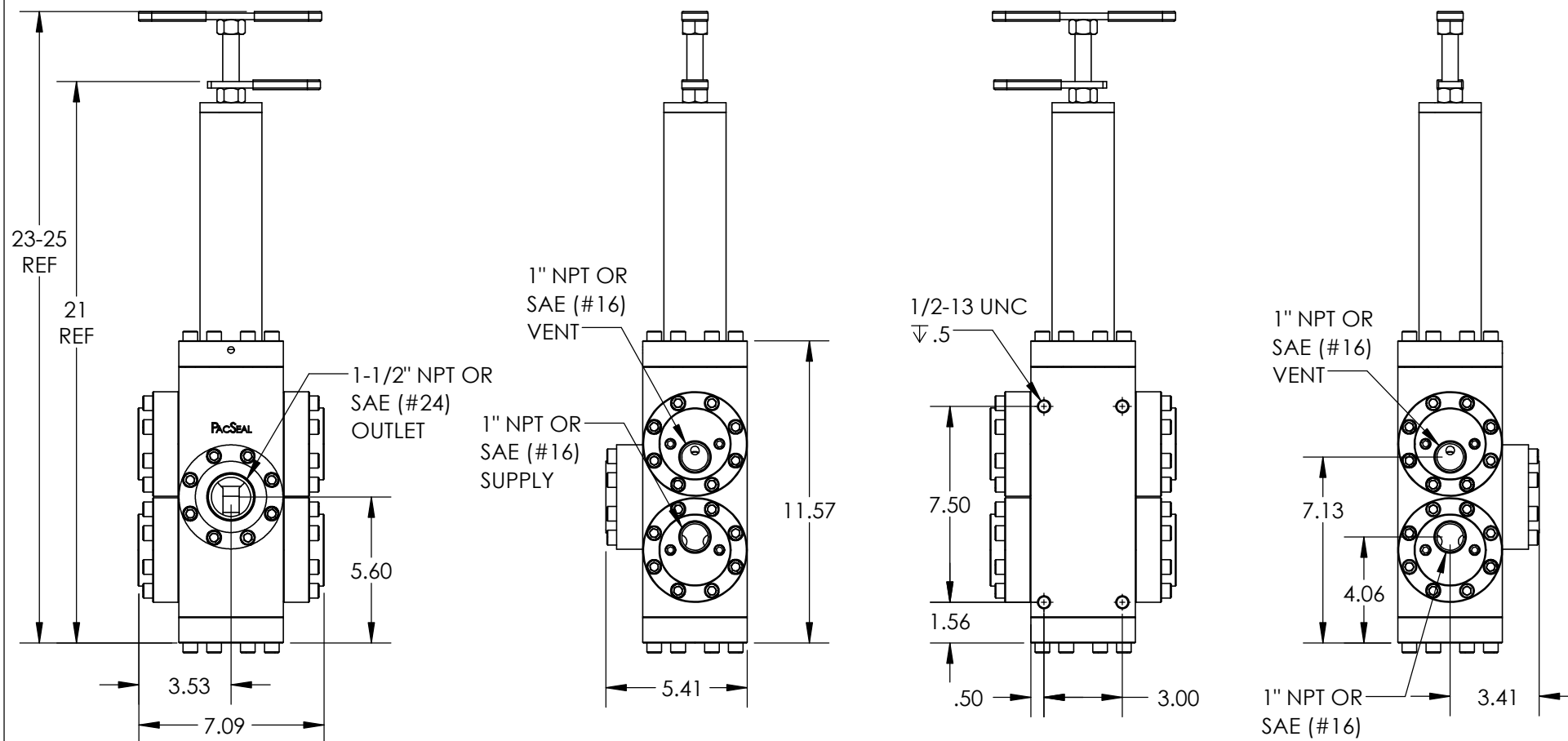
SIZE

A

REV

5

SHEET 3 OF 23



Notes:

1. Adjustment handle can be threaded in or out to increase or decrease compression on the spring and thus on the regulated outlet pressure.
2. Model configuration (Regulated Outlet Pressure) options: L, D
3. Weight - 72 lb.
4. All dimensions are consistent for KR-150 NPT or SAE ORB porting options, regardless of supply/outlet pressure and operator selection.

PACSEAL →
← **HYDRAULICS**

PROPRIETARY AND CONFIDENTIAL

THE INFORMATION CONTAINED IN THIS DRAWING IS THE SOLE PROPERTY OF PacSeal.
ANY REPRODUCTION IN PART OR AS A WHOLE WITHOUT THE WRITTEN PERMISSION OF PacSeal Hydraulics IS PROHIBITED.

TITLE
**Regulator w/ Manual
Operator (NPT/SAE)
Installation Drawing**

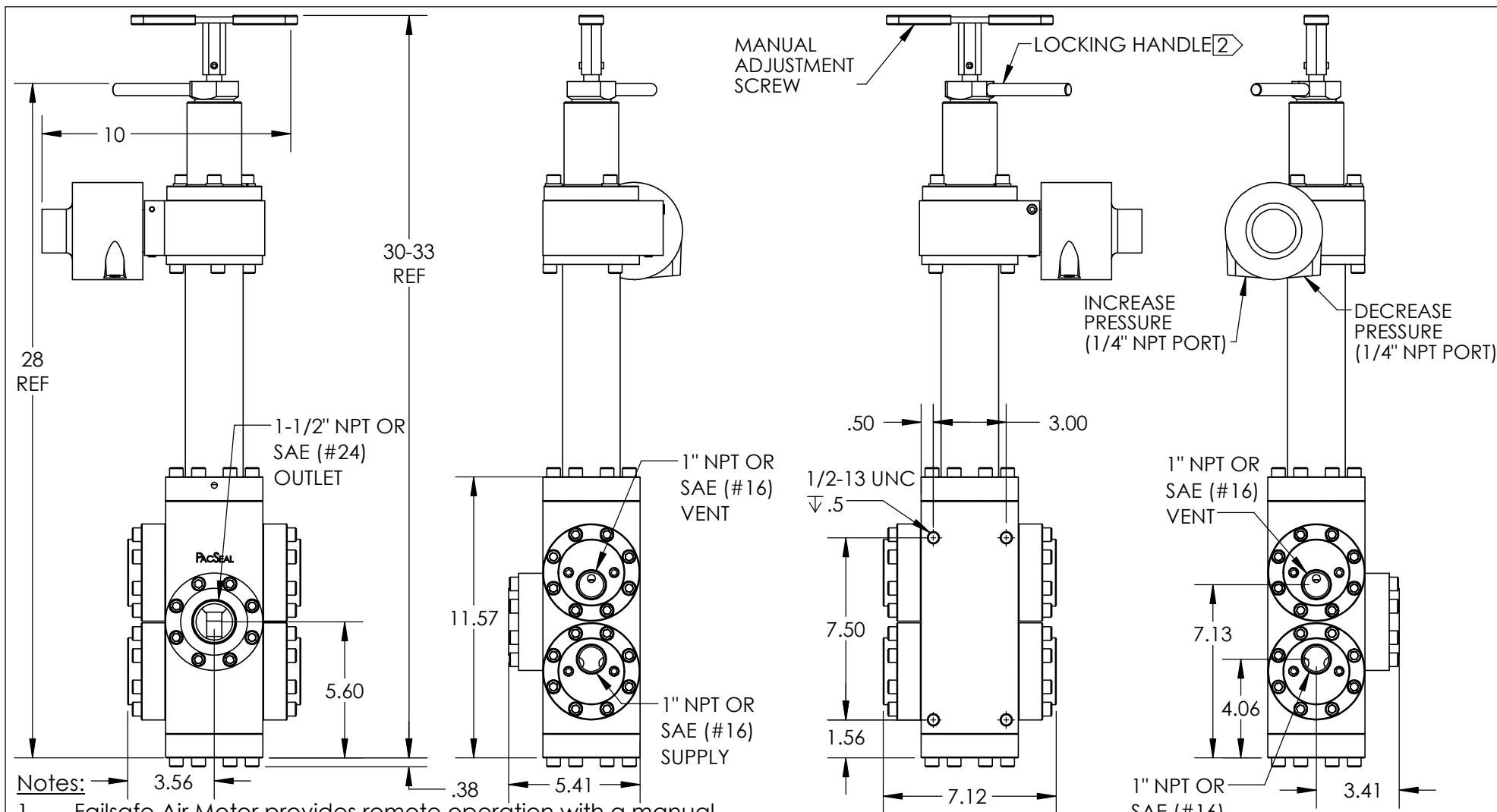
SIZE

A

REV

5

SHEET 4 OF 23


Notes:

1. Failsafe Air Motor provides remote operation with a manual override. Upon loss of pilot signal, there is no loss of regulated outlet pressure.
- ② Turn locking handle clockwise to lock for failsafe remote operation. Turn locking handle counter-clockwise to unlock for manual operation/override.
3. Recommended Air Supply - 80 to 130 psi
4. Model configuration (Regulated Outlet Pressure) options: L, D
5. Weight - 100 lb.
6. All dimensions are consistent for KR-150 NPT or SAE ORB porting options, regardless of supply/outlet pressure and operator selection.

PACSEAL →
← **HYDRAULICS**

PROPRIETARY AND CONFIDENTIAL

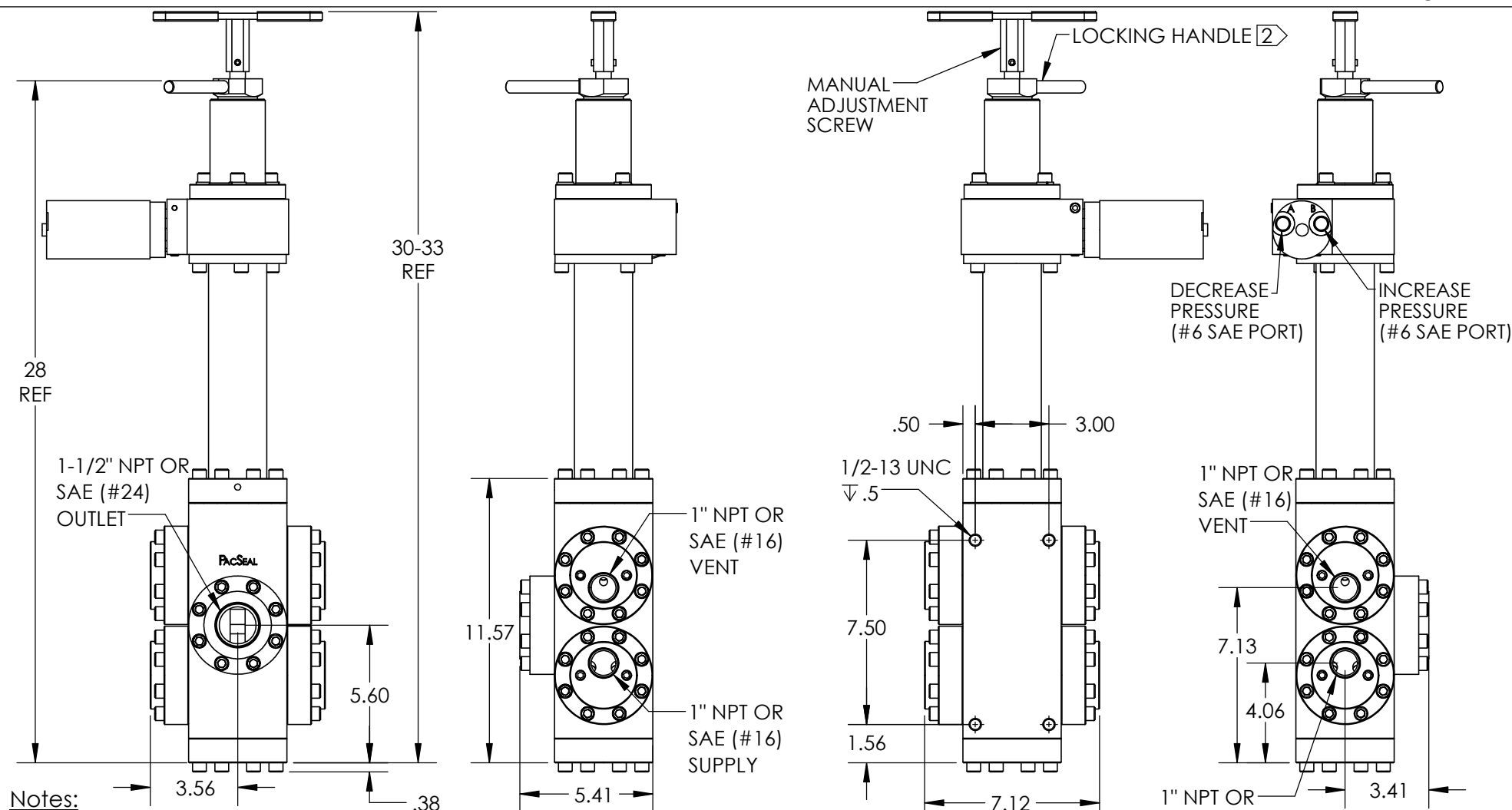
THE INFORMATION CONTAINED IN THIS DRAWING IS THE SOLE PROPERTY OF PacSeal. ANY REPRODUCTION IN PART OR AS A WHOLE WITHOUT THE WRITTEN PERMISSION OF PacSeal Hydraulics IS PROHIBITED.

TITLE
**Regulator w/ Failsafe Air
Operator (NPT/SAE)
Installation Drawing**

SIZE
A

REV
5

SHEET 5 OF 23


Notes:

1. Failsafe Hydraulic Motor provides remote operation with a manual override. Upon loss of pilot signal, there is no loss of regulated outlet pressure.
- ② Turn locking handle clockwise to lock for failsafe remote operation. Turn locking handle counter-clockwise to unlock for manual operation/override.
3. Max Hydraulic Supply Pressure - 1500 psi
4. Model configuration (Regulated Outlet Pressure) options: L, D
5. Weight - 98 lb.
6. All dimensions are consistent for KR-150 NPT or SAE ORB porting options, regardless of supply/outlet pressure and operator selection.

PACSEAL →
← **HYDRAULICS**

PROPRIETARY AND CONFIDENTIAL

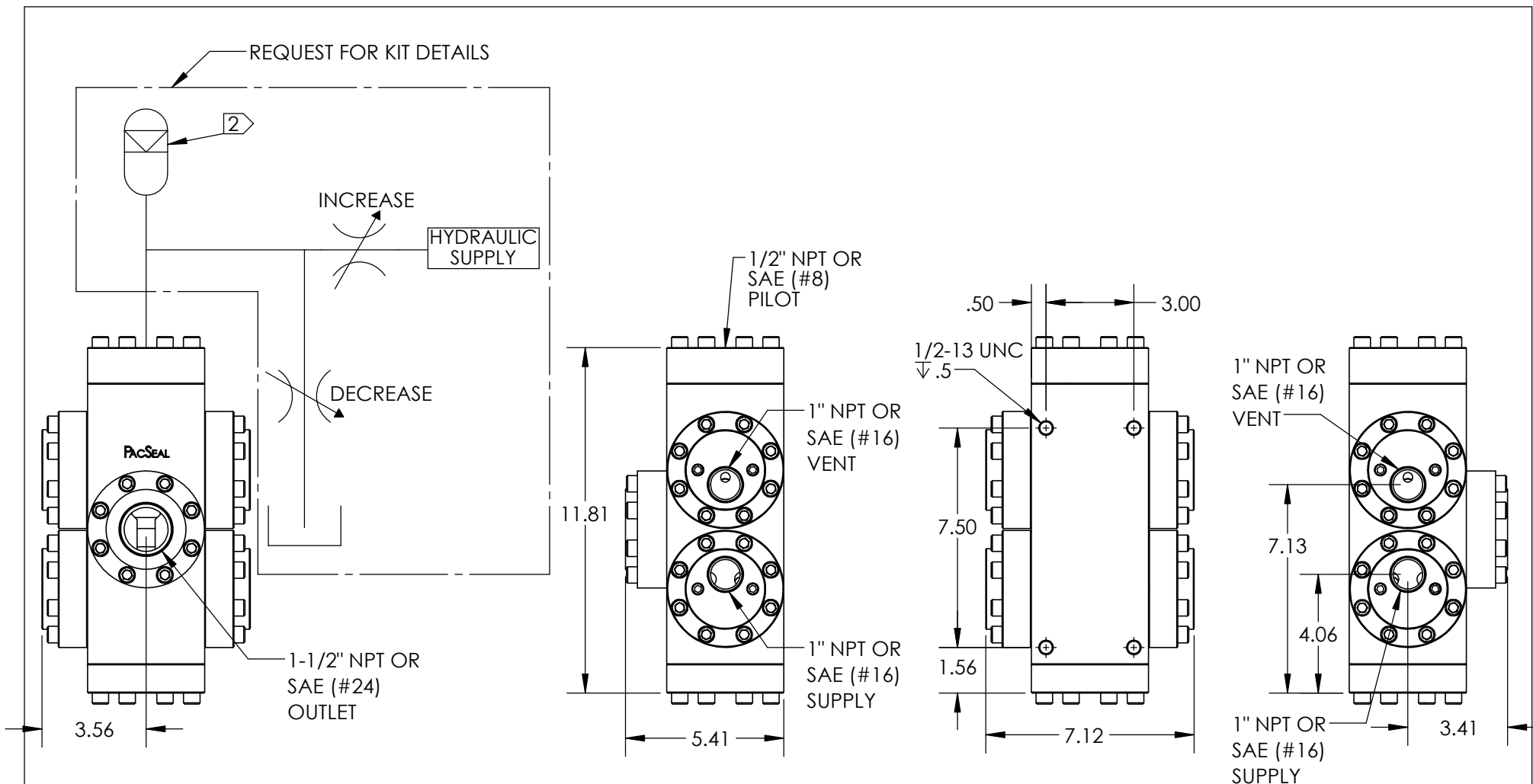
THE INFORMATION CONTAINED IN THIS DRAWING IS THE SOLE PROPERTY OF PacSeal.
ANY REPRODUCTION IN PART OR AS A WHOLE WITHOUT THE WRITTEN PERMISSION OF PacSeal Hydraulics IS PROHIBITED.

TITLE **Regulator w/ Failsafe Hydraulic Operator (NPT/SAE) Installation Drawing**

SIZE
A

REV
5

SHEET 6 OF 23



Notes:

1. A remote, variable hydraulic signal operates on a piston with a 1:1 ratio which allows for the most precisely controlled outlet pressures of all options. Loss of hydraulic pilot pressure will result in the outlet venting to tank.
2. Requires a minimum 1 Pint Accumulator for operation
3. Model configuration (Regulated Outlet Pressure) option: P
4. Weight - 61 lb.
5. All dimensions are consistent for KR-150 NPT or SAE porting options, regardless of supply/outlet pressure and operator selection.

PACSEAL →
← **HYDRAULICS**

PROPRIETARY AND CONFIDENTIAL

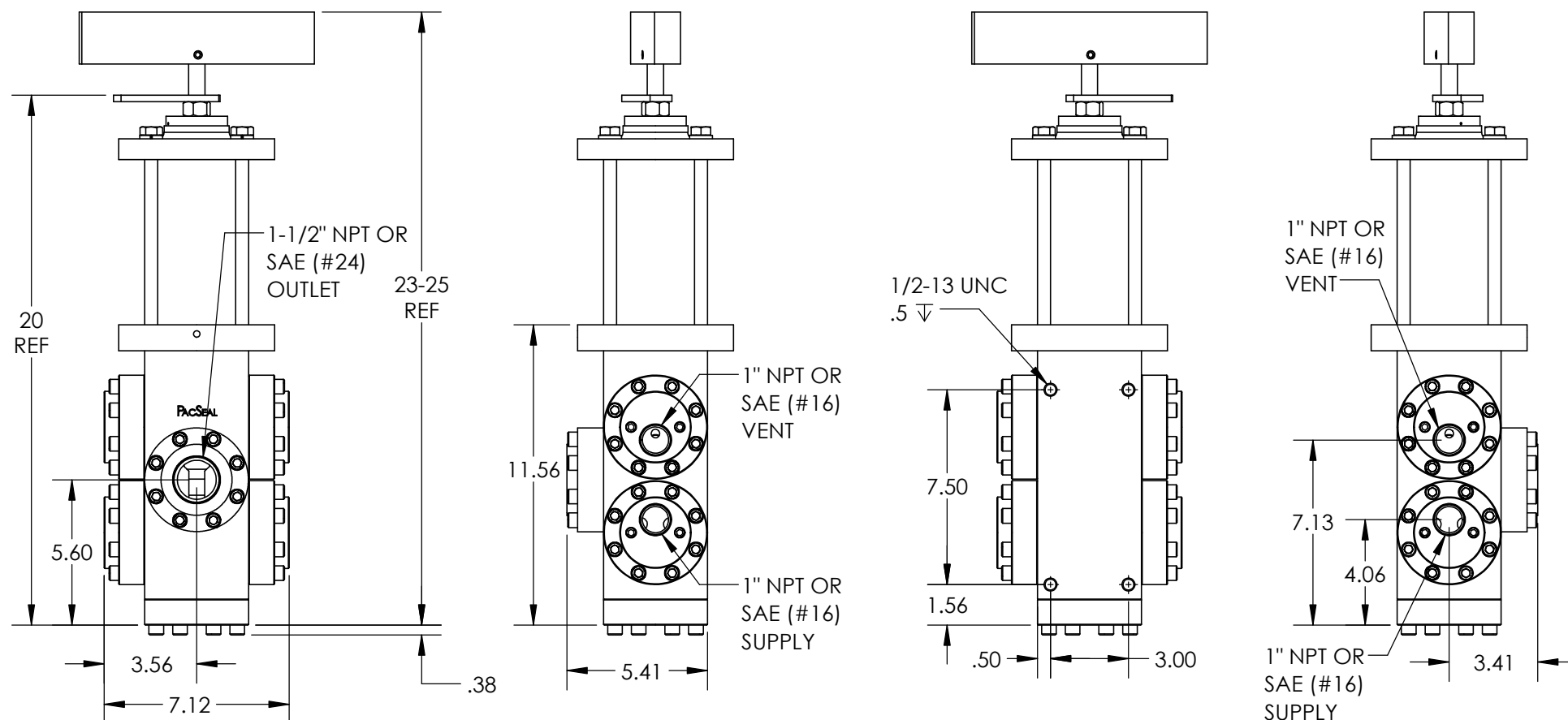
THE INFORMATION CONTAINED IN THIS DRAWING IS THE SOLE PROPERTY OF PacSeal.
ANY REPRODUCTION IN PART OR AS A WHOLE WITHOUT THE WRITTEN PERMISSION OF PacSeal IS PROHIBITED.

TITLE
**Regulator w/ Hydraulic
Pilot Operator (NPT/SAE)
Installation Drawing**

SIZE
A

REV
5

SHEET 7 OF 23



Notes:

1. Adjustment handle can be threaded in or out to increase or decrease compression on the spring and thus on the regulated outlet pressure.
2. Model configuration (Regulated Outlet Pressure) options: H (5000 psi supply) and W (6000 psi supply)
3. Weight - 96 lb.
4. All dimensions are consistent for KR-150 NPT or SAE ORB porting options, regardless of supply/outlet pressure and operator selection.

PACSEAL 
HYDRAULICS 

PROPRIETARY AND CONFIDENTIAL

THE INFORMATION CONTAINED IN THIS DRAWING IS THE SOLE PROPERTY OF PacSeal. ANY REPRODUCTION IN PART OR AS A WHOLE WITHOUT THE WRITTEN PERMISSION OF PacSeal IS PROHIBITED.

TITLE

**High Pressure
Output w/
Manual Operator**

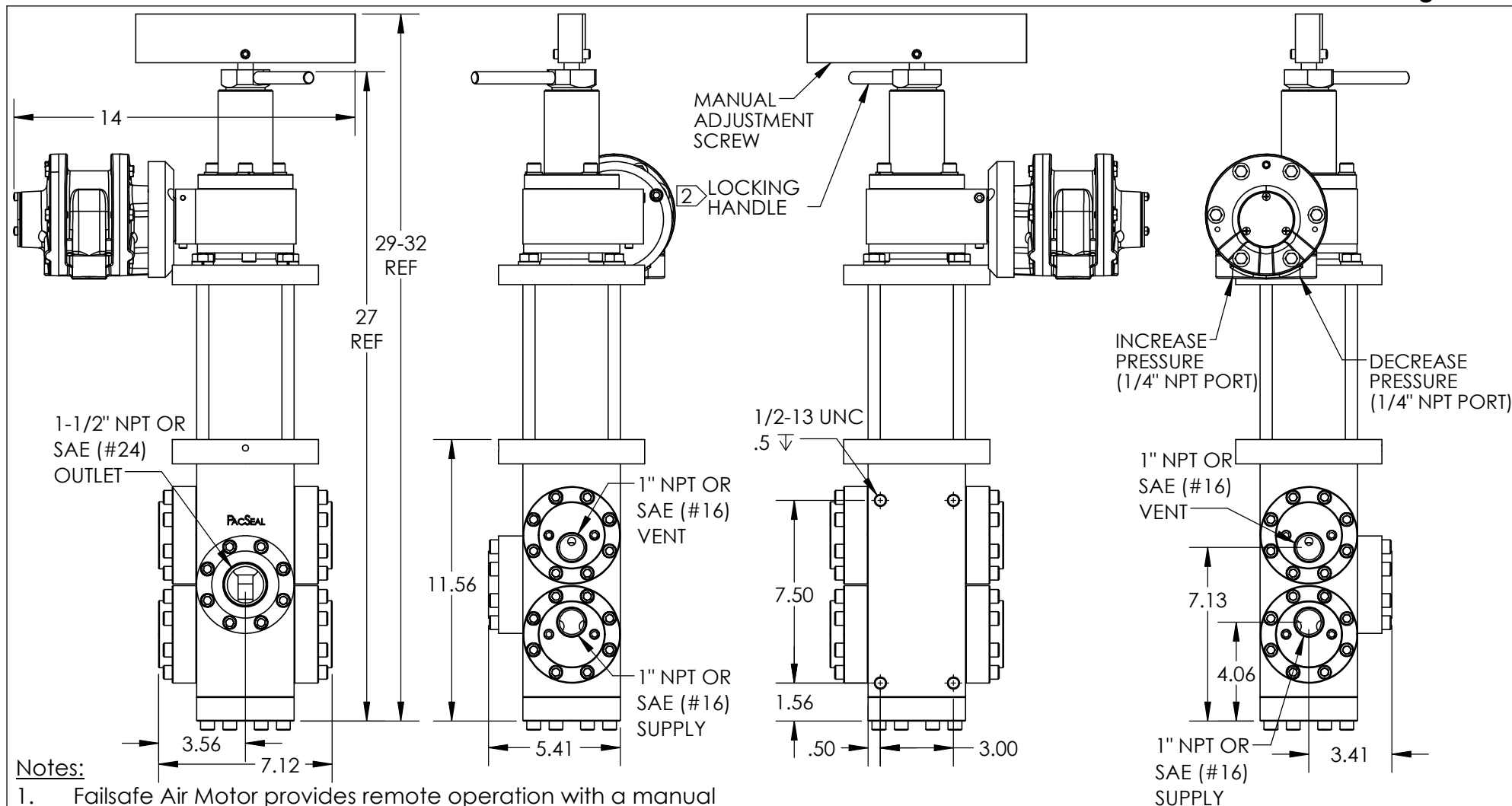
SIZE

A

REV

5

SHEET 8 OF 23



Notes:

1. Failsafe Air Motor provides remote operation with a manual override. Upon loss of pilot signal, there is no loss of regulated outlet pressure.
2. Turn locking handle clockwise to lock for failsafe remote operation. Turn locking handle counter-clockwise to unlock for manual operation/override.
3. Recommended air supply - 80 to 130 psi
4. Model configuration (Regulated Outlet Pressure) option: H (5000 psi supply)
5. Weight - 141 lb.
6. All dimensions are consistent for KR-150 NPT or SAE ORB porting options, regardless of supply/outlet pressure and operator selection.

PACSEAL 
HYDRAULICS 

PROPRIETARY AND CONFIDENTIAL

THE INFORMATION CONTAINED IN THIS DRAWING IS THE SOLE PROPERTY OF PacSeal. ANY REPRODUCTION IN PART OR AS A WHOLE WITHOUT THE WRITTEN PERMISSION OF PacSeal Hydraulics IS PROHIBITED.

TITLE

**High Pressure Output
Regulator w/ High Torque
Failsafe Air Operator**

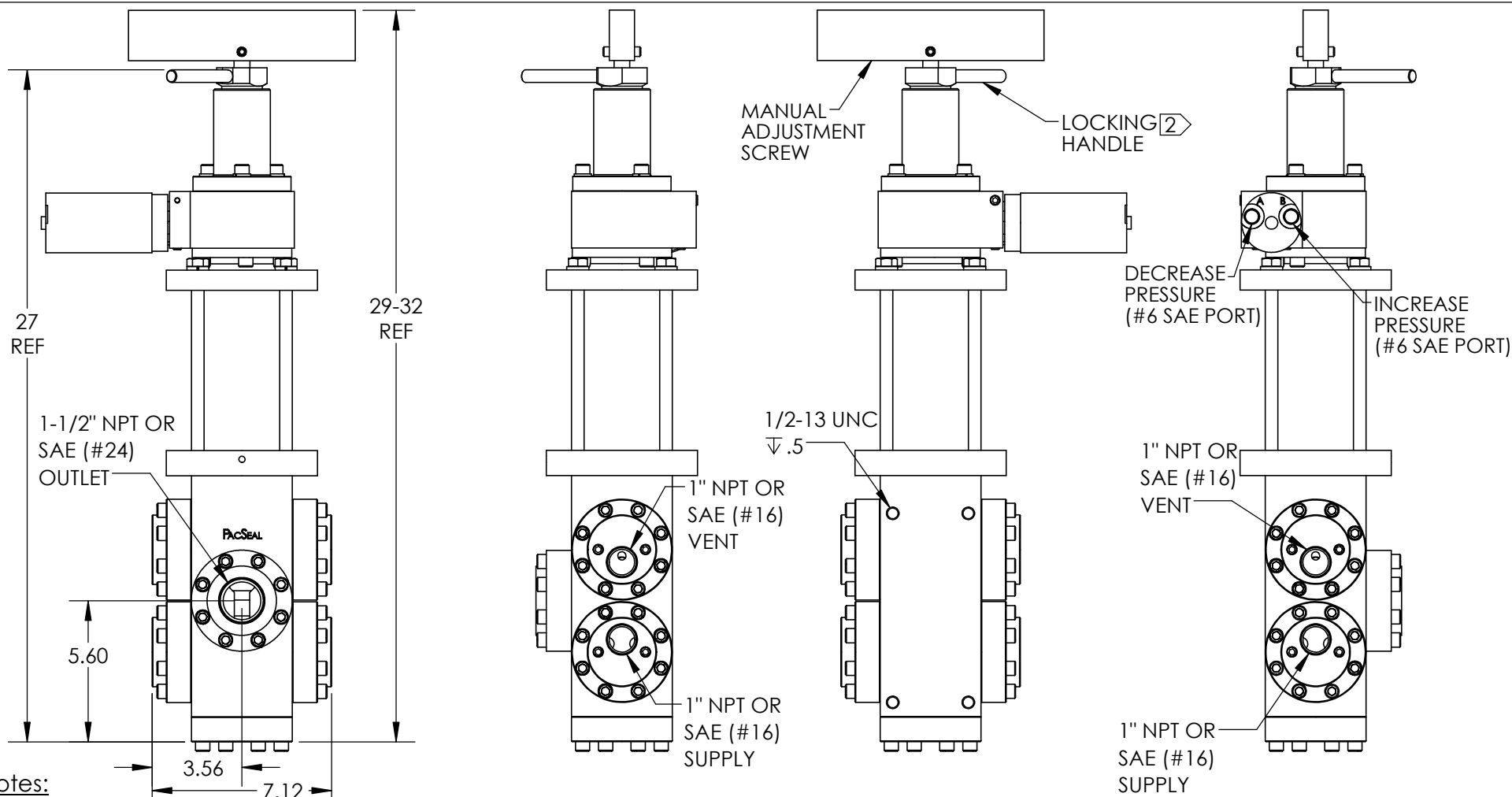
SIZE

A

REV

5

SHEET 9 OF 23



Notes:

1. Failsafe Hydraulic Motor provides remote operation with a manual override. Upon loss of pilot signal, there is no loss of regulated outlet pressure.
- ② Turn locking handle clockwise to lock for failsafe remote operation. Turn locking handle counter-clockwise to unlock for manual operation/override.
3. Max Hydraulic Motor Supply Pressure - 1500 psi
4. Model configuration (Regulated Outlet Pressure) option: H (5000 psi supply) and W (6000 psi supply).
5. Weight - 116 lb.
6. All dimensions are consistent for KR-150 NPT or SAE ORB porting options, regardless of supply/outlet pressure and operator selection.

PACSEAL →
← **HYDRAULICS**

PROPRIETARY AND CONFIDENTIAL

THE INFORMATION CONTAINED IN THIS DRAWING IS THE SOLE PROPERTY OF PacSeal. ANY REPRODUCTION IN PART OR AS A WHOLE WITHOUT THE WRITTEN PERMISSION OF PacSeal IS PROHIBITED.

TITLE

**High Pressure Output
Regulator w/ Failsafe
Hydraulic Operator**

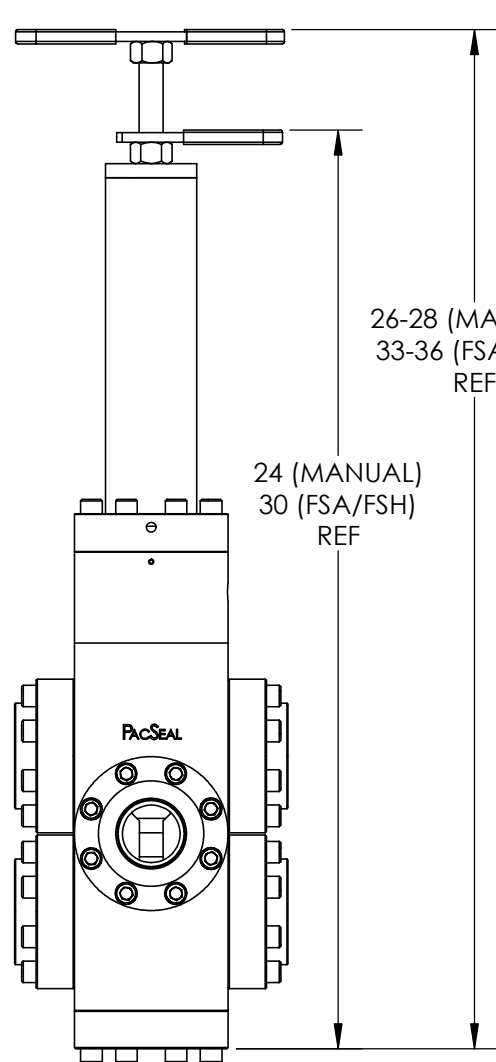
SIZE

A

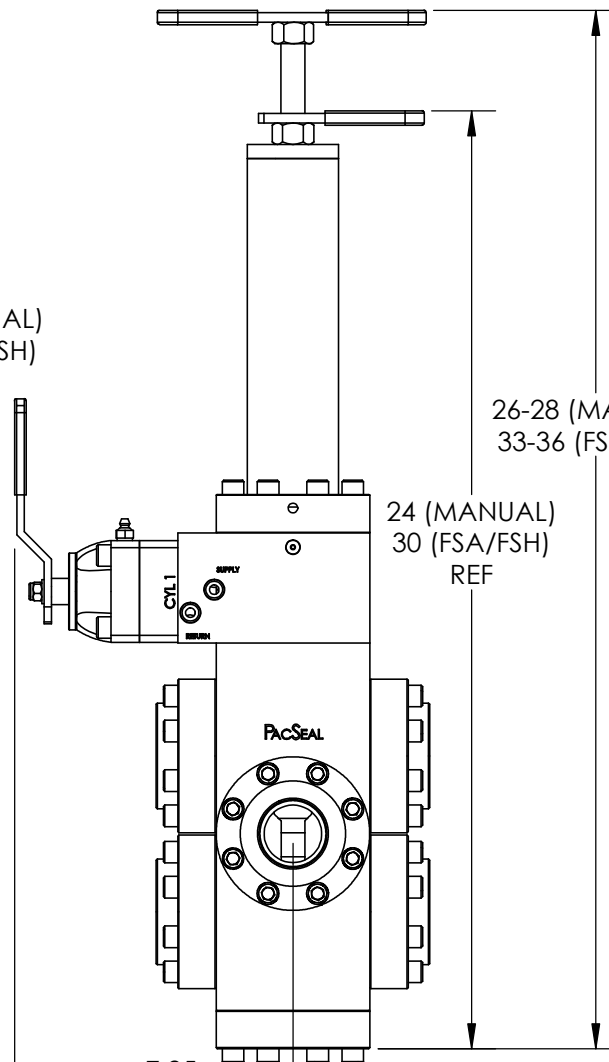
REV

5

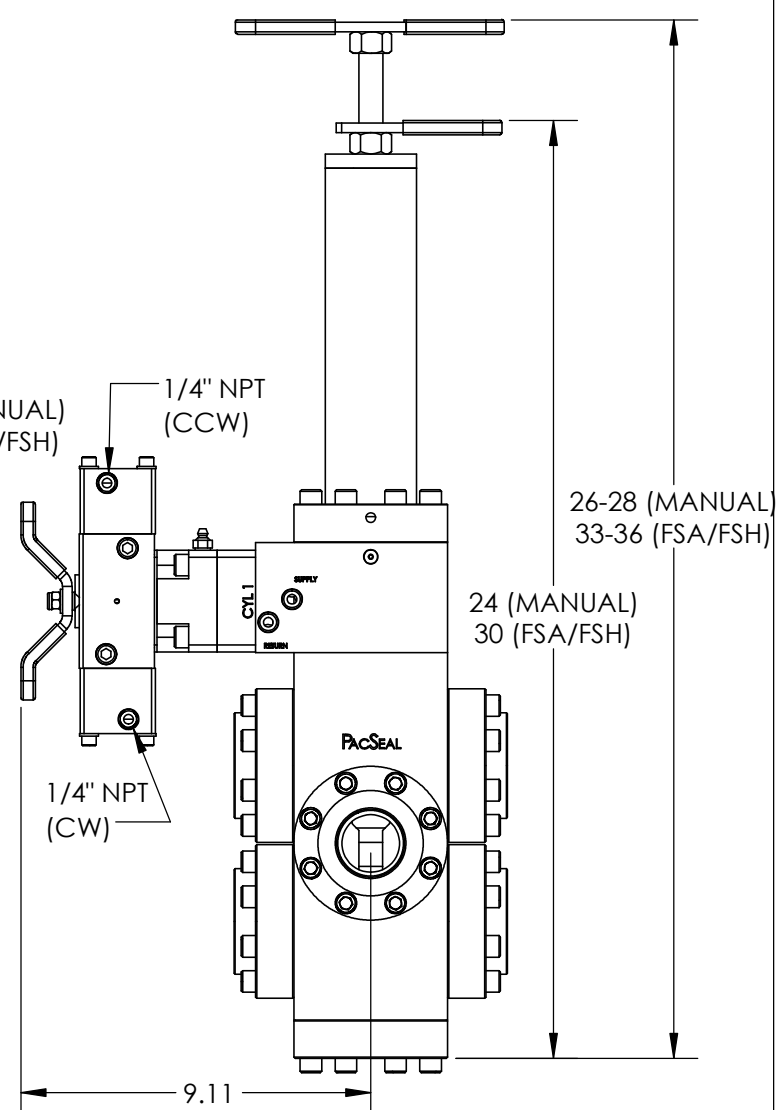
SHEET 10 OF 23



KR-150 Internal Override Remote Pilot Operation (-IO)



KR-150 Internal Override with SV-25 Open Center Pilot Valve (-IS)



KR-150 Internal Override with SVx-25 Open Center Pilot Air Actuated Valve (-IX)
(80-150 psi air inlet)
(3000 psi working pressure)

The I/O Bypass operator allows full accumulator pressure to be supplied downstream of the regulator without a dedicated 4-way bypass valve in the circuit. The over-ride bypass is accomplished by applying a pilot signal to the I/O operator which is equal to or greater than the accumulator pressure. The pilot pressure forces the piston/ seal container assembly to the full open position where supply pressure flows through the regulator to the output circuit. Releasing the pilot signal allows the regulator to return to the original set pressure.

Notes:

- ① See SV-25 product information for further details
- ② See SVx-25 product information for further details
3. Regulated outlet pressure options: L, D

PACSEAL →
← **HYDRAULICS**

PROPRIETARY AND CONFIDENTIAL

THE INFORMATION CONTAINED IN THIS DRAWING IS THE SOLE PROPERTY OF PacSeal. ANY REPRODUCTION IN PART OR AS A WHOLE WITHOUT THE WRITTEN PERMISSION OF PacSeal IS PROHIBITED.

TITLE

Internal Override Options Installation Drawing

SIZE

A

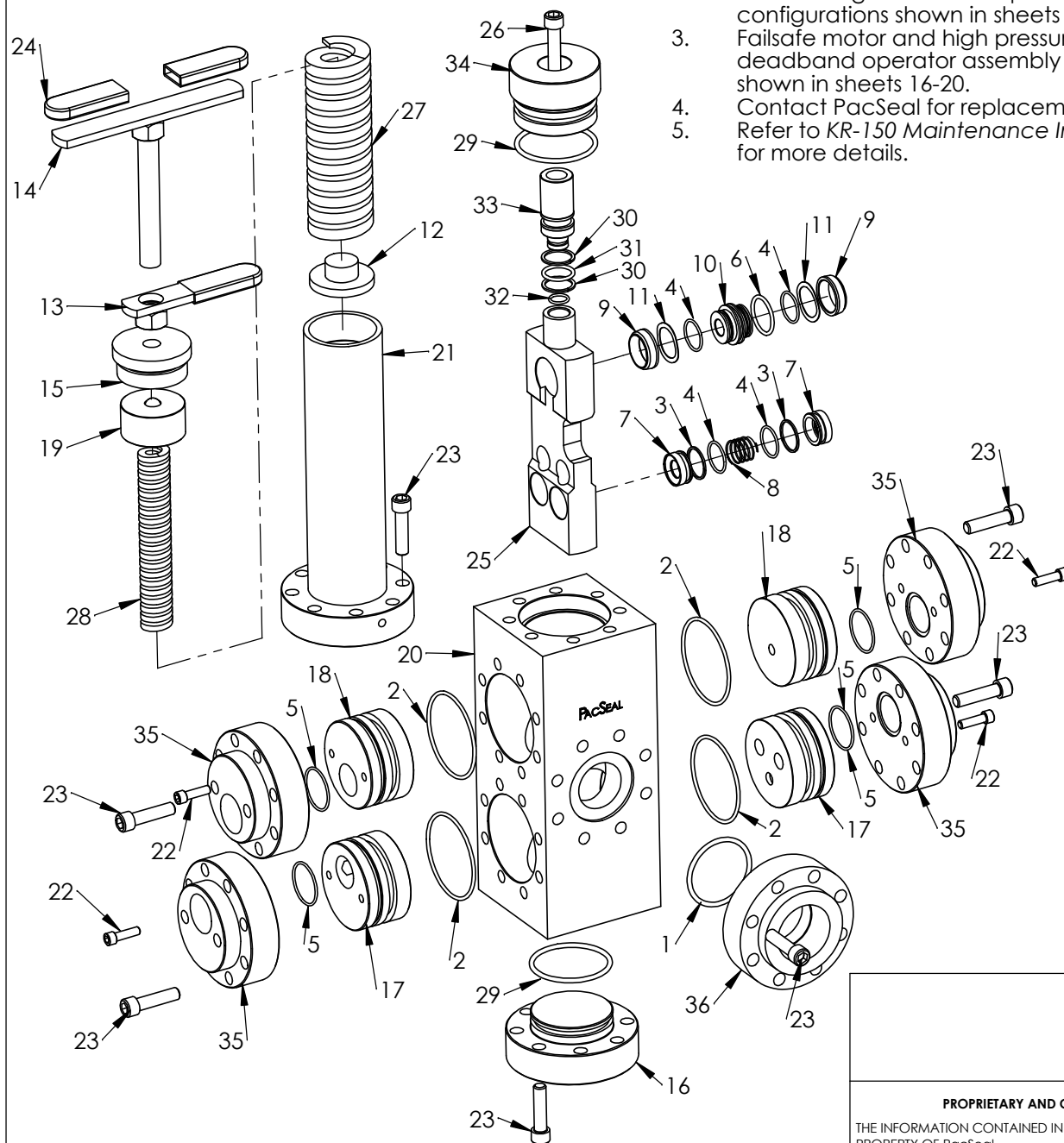
REV

5

SHEET 11 OF 23

Notes:

1. KR-150 "D" Manual Regulator shown for illustration purposes.
2. All other regulated outlet pressure model configurations shown in sheets 13-15.
3. Failsafe motor and high pressure low deadband operator assembly drawings shown in sheets 16-20.
4. Contact PacSeal for replacement parts.
5. Refer to KR-150 Maintenance Instructions for more details.



ITEM NO.	PART NUMBER	DESCRIPTION	QTY.
1	23-1126	O-Ring	1
2	23-1263	O-Ring	4
3	23-1322	Backup Ring	4
4	23-1323	O-Ring	6
5	23-1325	O-Ring	4
6	23-1334	O-Ring	1
7	40-0014	Seal Ring, Supply	4
8	40-0110	Spring	2
9	40-0113	Seal Ring, Vent	2
10	40-0114	Valve Cage	1
11	40-0115	Wave Spring	2
12	40-0134	Spring Plate	1
13	40-0135	Lock Handle	1
14	40-0136	Adjusting Screw & Handle	1
15	40-0140	Plug, Adjustment Head	1
16	40-0197	Flange, Lower	1
17	40-0285	Flow Plate, Supply	2
18	40-0286	Flow Plate, Vent	2
19	40-0300	Spring Guide	1
20	40-0323	Body	1
21	40-0383	Ajustment Head	1
22	50-0066	Bolt, SHCS	8
23	50-0069	Bolt, SHCS	56
24	50-0239	Grip, Handle	3
25	Note 2	Seal Container	1
26	Note 2	SHCS	1
27	Note 2	Spring, Outer	1
28	Note 2	Spring, Inner	1
29	Note 2	O-Ring	2
30	Note 2	Backup Ring	2
31	Note 2	O-Ring	1
32	Note 2	O-Ring	1
33	Note 2	Piston, Manual	1
34	Note 2	Piston Guide, KR-150 Manual	1
35	Note 4	Flange, Inlet & Vent	4
36	Note 4	Flange, Outlet	1

PACSEAL →
← **HYDRAULICS**

PROPRIETARY AND CONFIDENTIAL

THE INFORMATION CONTAINED IN THIS DRAWING IS THE SOLE PROPERTY OF PacSeal. ANY REPRODUCTION IN PART OR AS A WHOLE WITHOUT THE WRITTEN PERMISSION OF PacSeal Hydraulics IS PROHIBITED.

TITLE

General Assembly Overview

SIZE

A

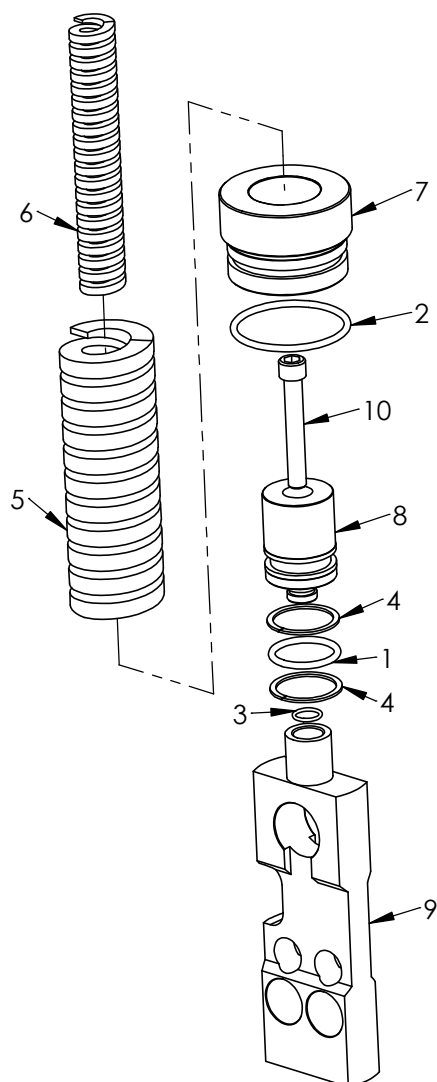
REV

5

SHEET 12 OF 23

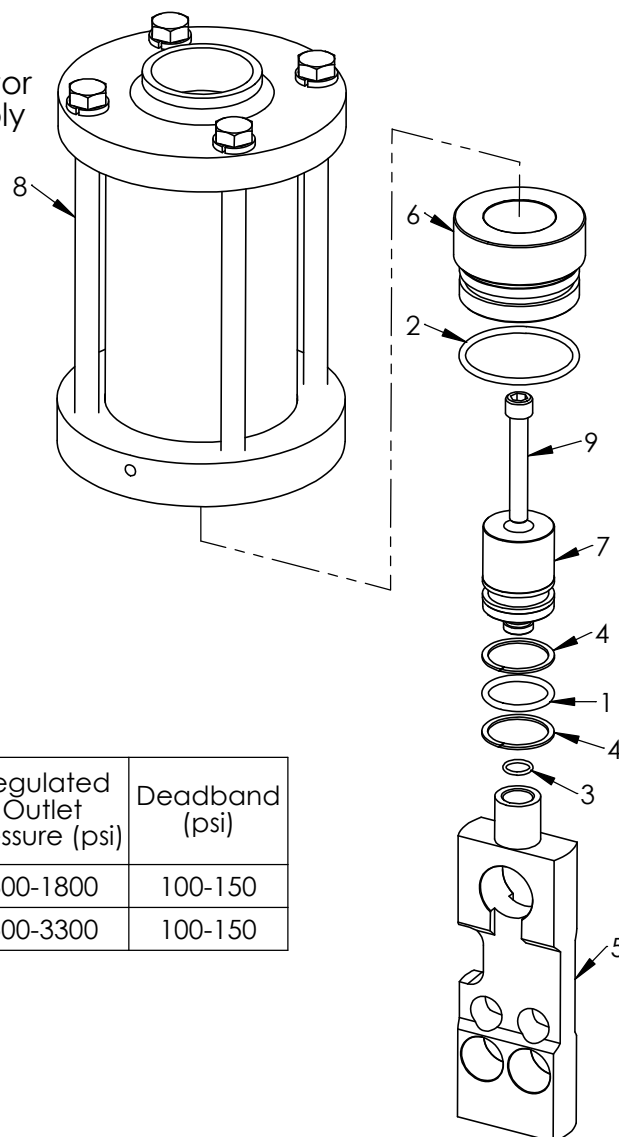
Notes:

- The listed components vary based on Supply and Regulated Outlet Pressures, while all other regulator components (shown in sheet 12 "General Assembly Overview") are shared.



KR-150 L Regulator

Model	Supply Pressure (psi)	Regulated Outlet Pressure (psi)	Deadband (psi)
L	3000/5000	300-1800	100-150
H	5000/6000	500-3300	100-150



KR-150 H Regulator
With High Pressure Output Adjustment Head

ITEM NO.	PART NUMBER	DESCRIPTION	QTY.
1	23-1124	O-Ring	1
2	23-1319	O-Ring	1
3	23-1333	O-Ring	1
4	23-1342	Backup Ring	2
5	40-0143	Spring, Outer	1
6	40-0144	Spring, Inner	1
7	40-1351	Piston Guide, L	1
8	40-1352	Piston, L	1
9	40-0714	Seal Container	1
10	50-0331	Screw	1

ITEM NO.	PART NUMBER	DESCRIPTION	QTY.
1	23-1124	O-Ring	1
2	23-1319	O-Ring	1
3	23-1333	O-Ring	1
4	23-1342	Backup Ring	2
5	40-0714	Seal Container	1
6	40-1351	Piston Guide, L	1
7	40-1352	Piston, L	1
8	40-2927	KR-75/140/150 L-HP Manual Operator	1
9	50-0331	Screw	1



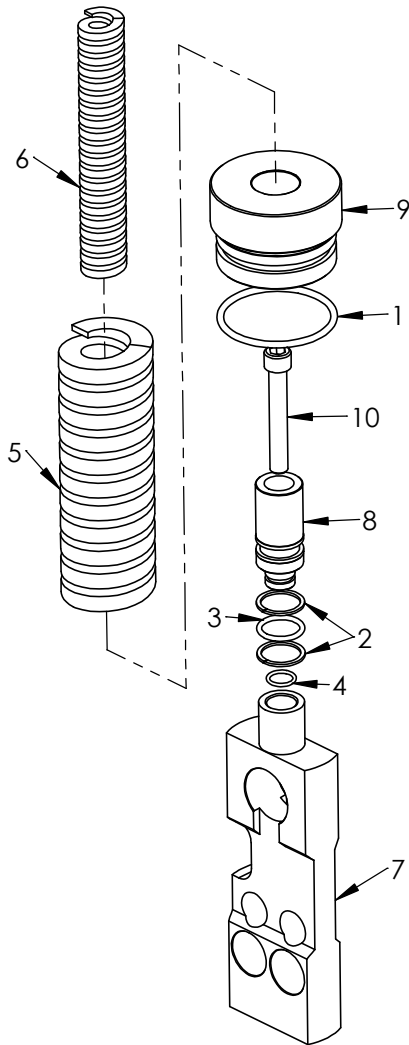
PROPRIETARY AND CONFIDENTIAL
THE INFORMATION CONTAINED IN THIS DRAWING IS THE SOLE PROPERTY OF PacSeal.
ANY REPRODUCTION IN PART OR AS A WHOLE WITHOUT THE WRITTEN PERMISSION OF PacSeal IS PROHIBITED.

TITLE
L and H Model
Configurations
Assembly Drawing

SIZE
A
REV
5
SHEET 13 OF 23

Notes:

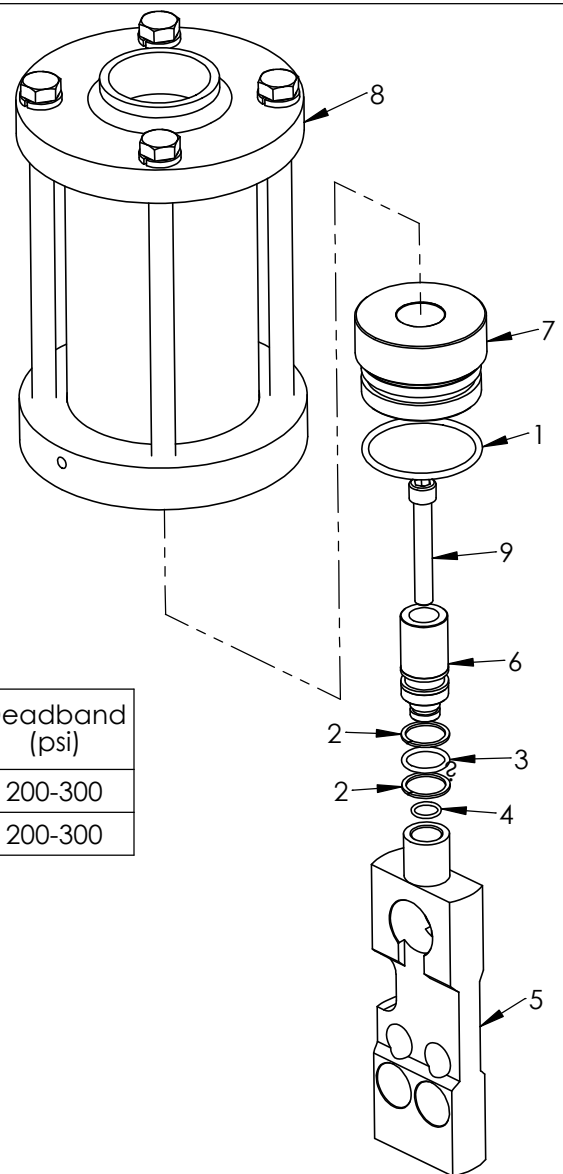
- The listed components vary based on Supply and Regulated Outlet Pressures, while all other regulator components (shown in sheet 12 "General Assembly Overview") are shared.



KR-150 D Regulator

ITEM NO.	PART NUMBER	DESCRIPTION	QTY.
1	23-1319	O-Ring	1
2	23-1331	Backup Ring	2
3	23-1332	O-Ring	1
4	23-1333	O-Ring	1
5	40-0143	Spring, Outer	1
6	40-0144	Spring, Inner	1
7	40-0714	Seal Container	1
8	40-0717	Piston, D	1
9	40-0718	Piston Guide, D	1
10	50-0331	SHCS	1

Model	Supply Pressure (psi)	Regulated Outlet Pressure (psi)	Deadband (psi)
D	5000	500-3000	200-300
W	6000	700-4500	200-300



KR-150 W Regulator
with High Pressure Output
Adjustment Head

ITEM NO.	PART NUMBER	DESCRIPTION	QTY.
1	23-1319	O-Ring	1
2	23-1331	Backup Ring	2
3	23-1332	O-Ring	1
4	23-1333	O-Ring	1
5	40-0714	Seal Container	1
6	40-0717	Piston, D	1
7	40-0718	Piston Guide, D	1
8	40-2927	High Pressure Output Adj. Head	1
9	50-0331	SHCS	1



PROPRIETARY AND CONFIDENTIAL
THE INFORMATION CONTAINED IN THIS DRAWING IS THE SOLE
PROPERTY OF PacSeal.
ANY REPRODUCTION IN PART OR AS A WHOLE WITHOUT THE
WRITTEN PERMISSION OF PacSeal IS PROHIBITED.

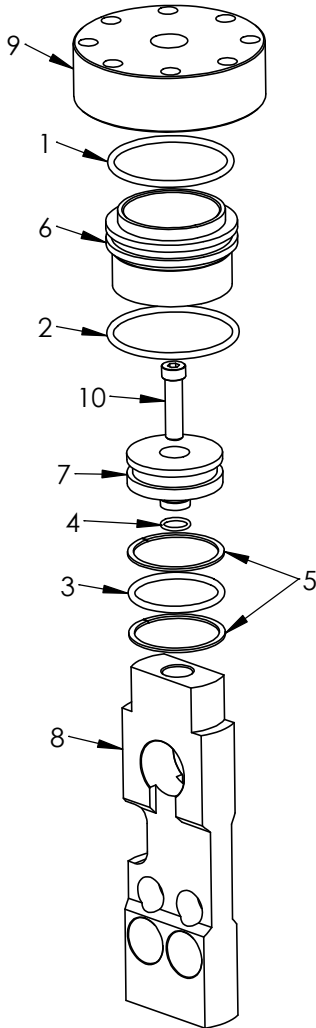
TITLE
D and W Model
Configurations
Assembly Drawing

SIZE
A
REV
5
SHEET 14 OF 23

Notes:

1. The listed components vary based on Supply and Regulated Outlet Pressures, while all other regulator components (shown in sheet 12 "General Assembly Overview") are shared.

Model	Supply Pressure (psi)	Regulated Outlet Pressure (psi)	Deadband (psi)
P	3000/5000/6000	50-6000	0-100



KR-150 P Regulator
(Hydraulic Pilot)

ITEM NO.	PART NUMBER	DESCRIPTION	QTY.
1	23-1128	O-Ring	1
2	23-1327	O-Ring	1
3	23-1330	O-Ring	1
4	23-1333	O-Ring	1
5	23-1413	Backup Ring	2
6	40-0318	Piston Guide	1
7	40-0319	Piston, Hydraulic	1
8	40-0320	Seal Container	1
9	40-0324	Hydraulic Head	1
10	50-0068	Bolt, SHCS	1



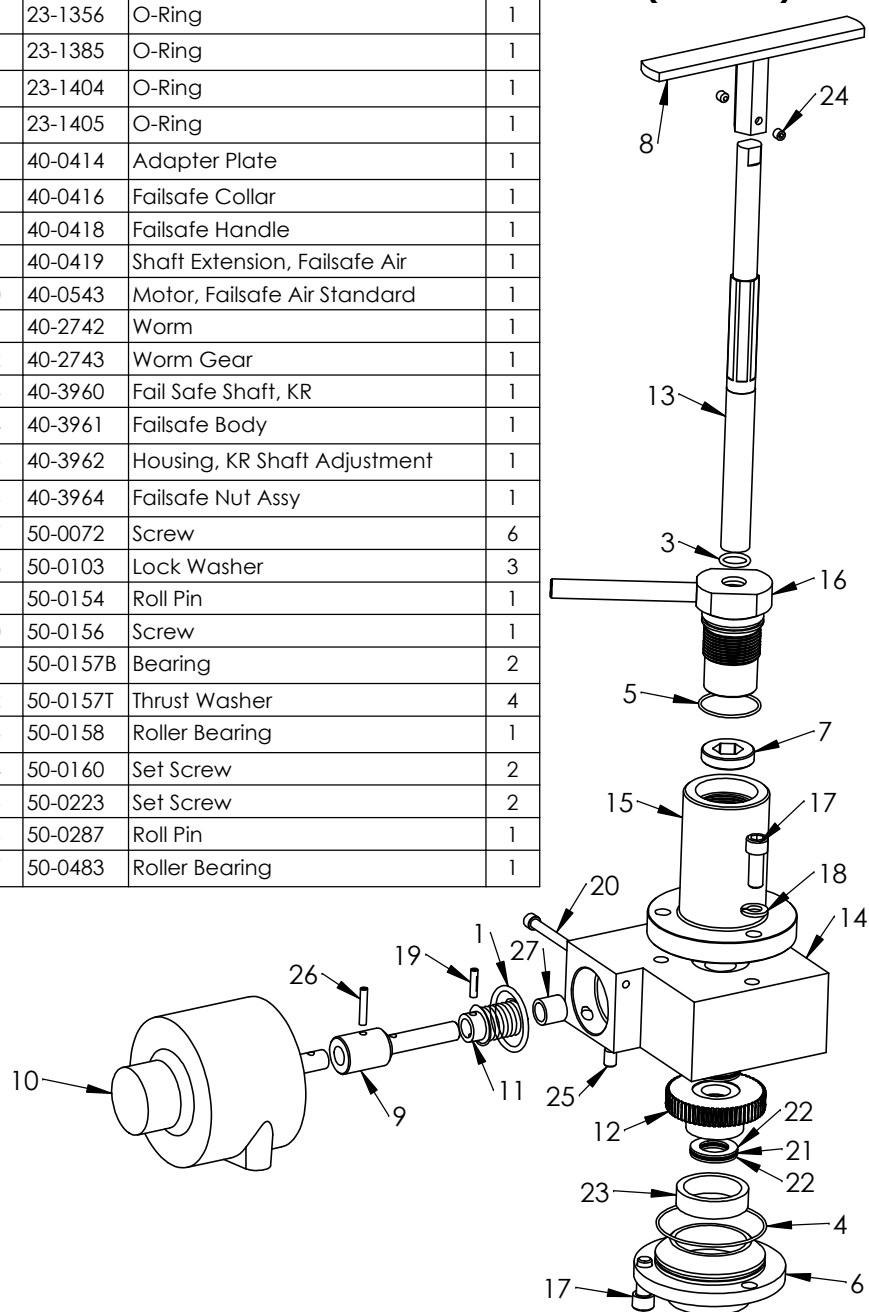
PROPRIETARY AND CONFIDENTIAL
THE INFORMATION CONTAINED IN THIS DRAWING IS THE SOLE
PROPERTY OF PacSeal.
ANY REPRODUCTION IN PART OR AS A WHOLE WITHOUT THE
WRITTEN PERMISSION OF PacSeal IS PROHIBITED.

TITLE **D and P Model
Configurations
Assembly Drawing**

SIZE **A** REV **5**

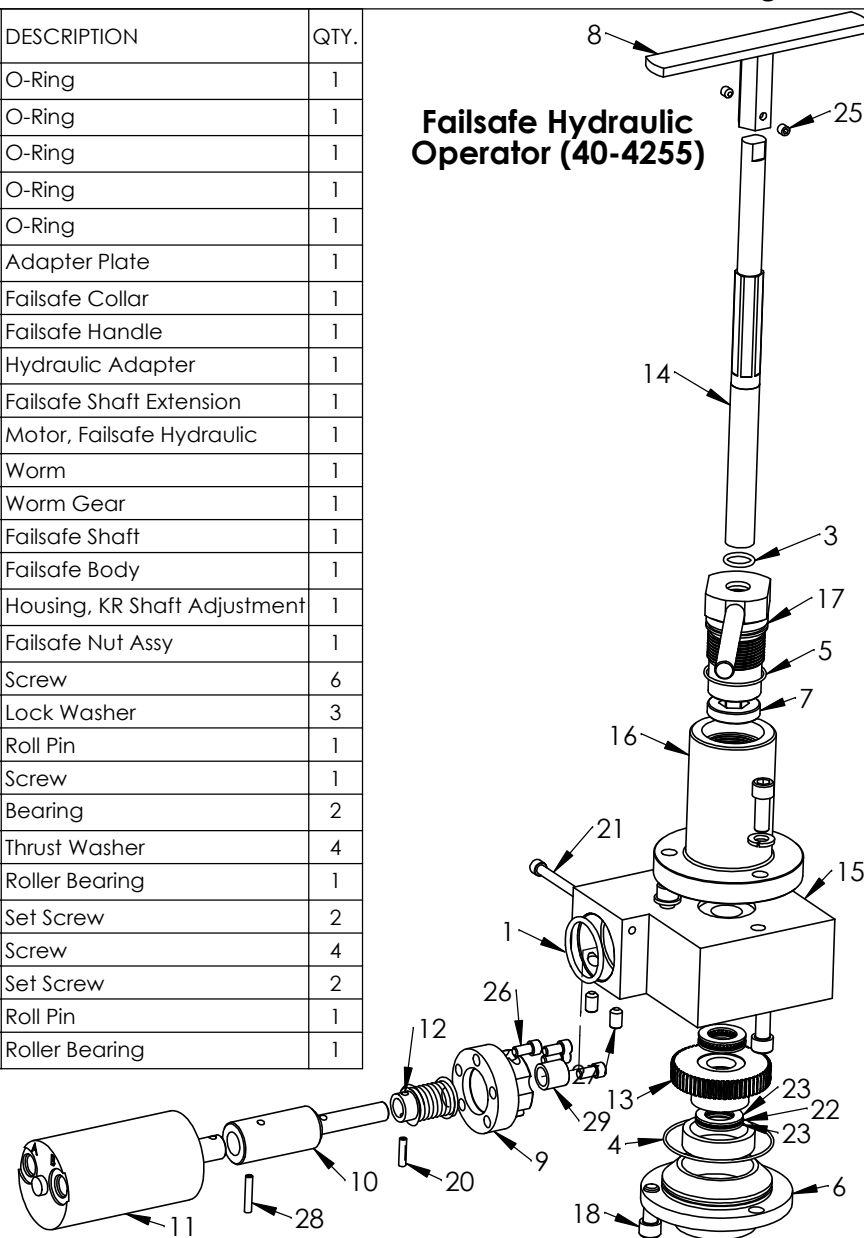
ITEM NO.	PART NUMBER	DESCRIPTION	QTY.
1	23-1123	O-Ring	1
2	23-1356	O-Ring	1
3	23-1385	O-Ring	1
4	23-1404	O-Ring	1
5	23-1405	O-Ring	1
6	40-0414	Adapter Plate	1
7	40-0416	Failsafe Collar	1
8	40-0418	Failsafe Handle	1
9	40-0419	Shaft Extension, Failsafe Air	1
10	40-0543	Motor, Failsafe Air Standard	1
11	40-2742	Worm	1
12	40-2743	Worm Gear	1
13	40-3960	Fail Safe Shaft, KR	1
14	40-3961	Failsafe Body	1
15	40-3962	Housing, KR Shaft Adjustment	1
16	40-3964	Failsafe Nut Assy	1
17	50-0072	Screw	6
18	50-0103	Lock Washer	3
19	50-0154	Roll Pin	1
20	50-0156	Screw	1
21	50-0157B	Bearing	2
22	50-0157T	Thrust Washer	4
23	50-0158	Roller Bearing	1
24	50-0160	Set Screw	2
25	50-0223	Set Screw	2
26	50-0287	Roll Pin	1
27	50-0483	Roller Bearing	1

Failsafe Air Operator (40-3963)



ITEM NO.	PART NUMBER	DESCRIPTION	QTY.
1	23-1123	O-Ring	1
2	23-1356	O-Ring	1
3	23-1385	O-Ring	1
4	23-1404	O-Ring	1
5	23-1405	O-Ring	1
6	40-0414	Adapter Plate	1
7	40-0416	Failsafe Collar	1
8	40-0418	Failsafe Handle	1
9	40-0715	Hydraulic Adapter	1
10	40-0716	Failsafe Shaft Extension	1
11	40-0719	Motor, Failsafe Hydraulic	1
12	40-2742	Worm	1
13	40-2743	Worm Gear	1
14	40-3960	Failsafe Shaft	1
15	40-3961	Failsafe Body	1
16	40-3962	Housing, KR Shaft Adjustment	1
17	40-3964	Failsafe Nut Assy	1
18	50-0072	Screw	6
19	50-0103	Lock Washer	3
20	50-0154	Roll Pin	1
21	50-0156	Screw	1
22	50-0157B	Bearing	2
23	50-0157T	Thrust Washer	4
24	50-0158	Roller Bearing	1
25	50-0160	Set Screw	2
26	50-0215	Screw	4
27	50-0223	Set Screw	2
28	50-0287	Roll Pin	1
29	50-0483	Roller Bearing	1

Failsafe Hydraulic Operator (40-4255)



PACSEAL →
← **HYDRAULICS**

PROPRIETARY AND CONFIDENTIAL

THE INFORMATION CONTAINED IN THIS DRAWING IS THE SOLE PROPERTY OF PacSeal. ANY REPRODUCTION IN PART OR AS A WHOLE WITHOUT THE WRITTEN PERMISSION OF PacSeal IS PROHIBITED.

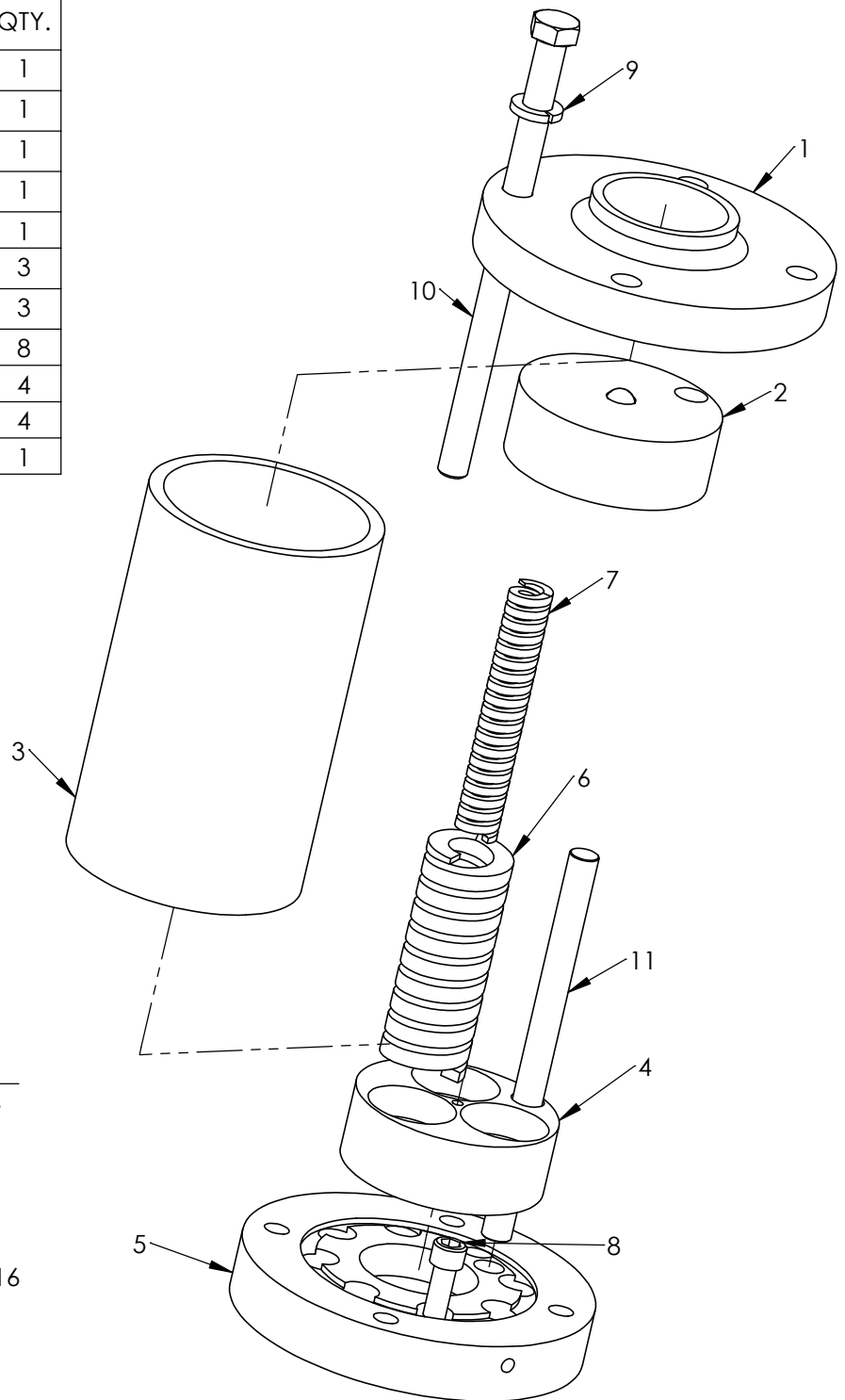
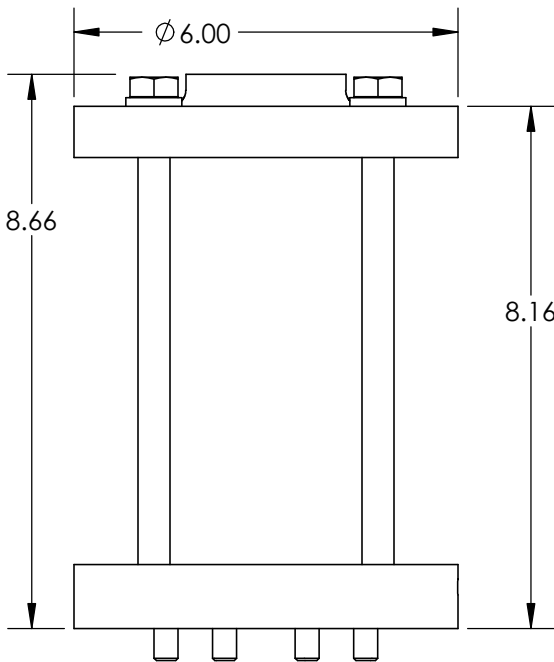
TITLE **Failsafe Air and Hydraulic Operators Assembly Drawing**

SIZE **A**

REV **5**

SHEET 16 OF 23

ITEM NO.	PART NUMBER	DESCRIPTION	QTY.
1	40-2654	Plate, Upper Actuator	1
2	40-2655	Plate, Upper Spring	1
3	40-2656	Cylinder, Actuator	1
4	40-2657	Plate, Lower Spring	1
5	40-2658	Plate, Lower Actuator	1
6	40-2659	Spring, Outer	3
7	40-2660	Spring, Inner	3
8	50-0072	SHCS	8
9	50-0104	Lock Washer	4
10	50-0434	Bolt	4
11	50-0435	Rod	1



KIT PART NUMBER
40-2927



PROPRIETARY AND CONFIDENTIAL
THE INFORMATION CONTAINED IN THIS DRAWING IS THE SOLE PROPERTY OF PacSeal.
ANY REPRODUCTION IN PART OR AS A WHOLE WITHOUT THE WRITTEN PERMISSION OF PacSeal IS PROHIBITED.

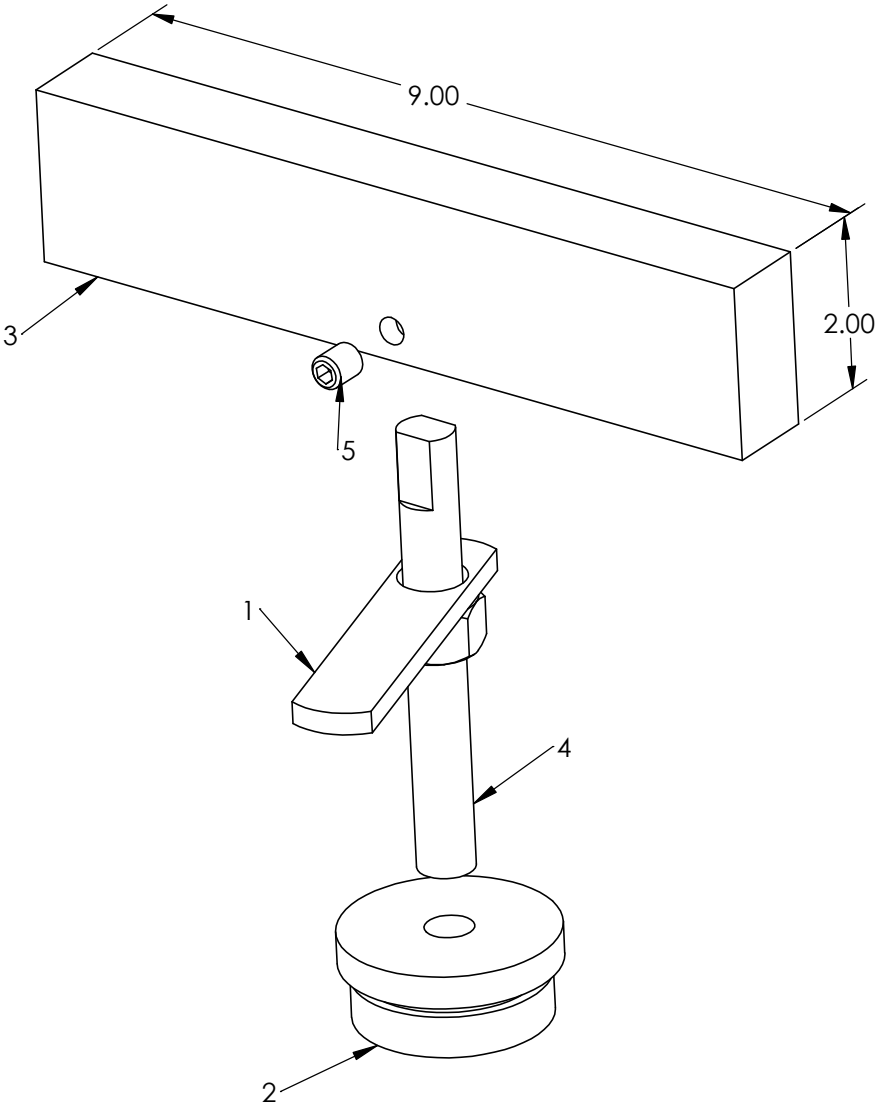
TITLE High Pressure Low
Deadband
Adjustment Head
Assembly Drawing

SIZE
A

REV
5

SHEET 17 OF 23

ITEM NO.	PART NUMBER	DESCRIPTION	QTY.
1	40-0135	Lock Handle	1
2	40-0140	Plug, Adjustment Head	1
3	40-3237	Handle, Fail Safe HP	1
4	40-3414	Adjusting Rod	1
5	50-0482	Set Screw	2

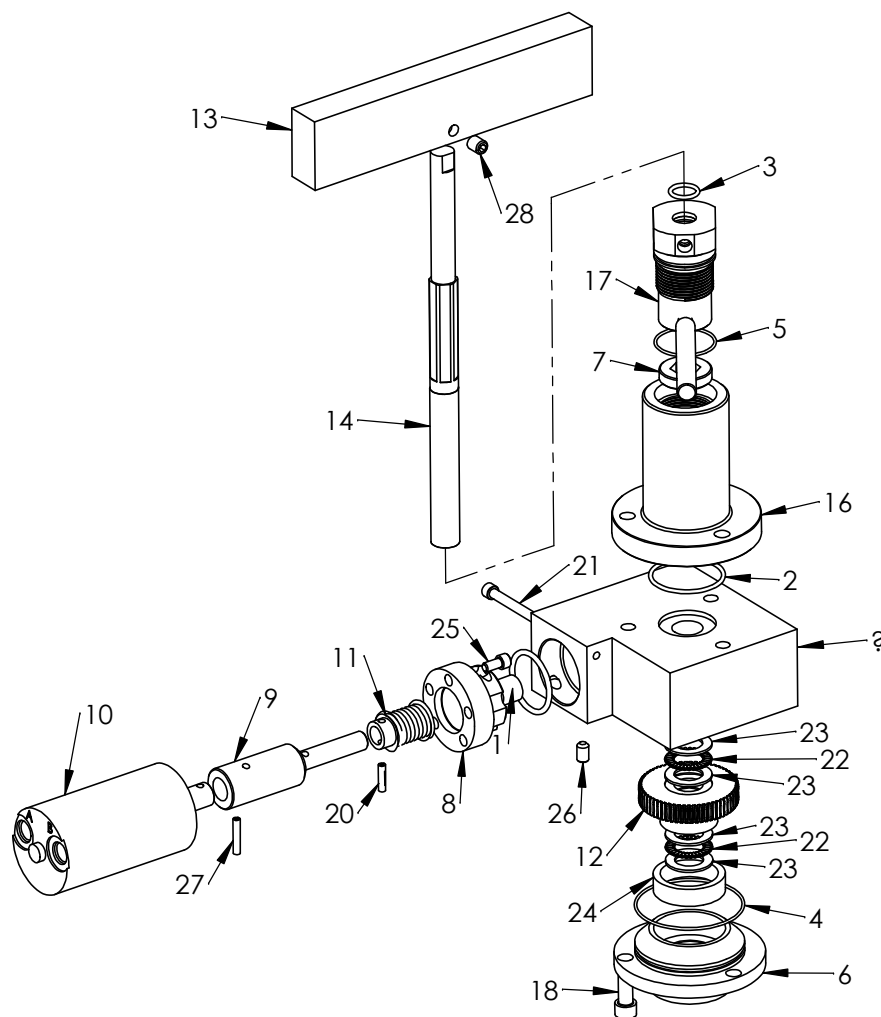


KIT PART NUMBER
40-3558



<p>PROPRIETARY AND CONFIDENTIAL THE INFORMATION CONTAINED IN THIS DRAWING IS THE SOLE PROPERTY OF PacSeal. ANY REPRODUCTION IN PART OR AS A WHOLE WITHOUT THE WRITTEN PERMISSION OF PacSeal IS PROHIBITED.</p>	<p>TITLE High Pressure Output Manual Handle Assembly Drawing</p>	SIZE A	REV 5
		SHEET 18 OF 23	

**High Pressure Output Failsafe Hydraulic Actuator
(40-4284) with High Torque Motor**
Used exclusively with "H" and "W" Regulator



ITEM NO.	PART NUMBER	DESCRIPTION	QTY.
1	23-1123	O-Ring	1
2	23-1356	O-Ring	1
3	23-1385	O-Ring	1
4	23-1404	O-Ring	1
5	23-1405	O-Ring	1
6	40-0414	Adapter Plate	1
7	40-0416	Collar	1
8	40-0715	Hydraulic Adapter	1
9	40-0716	Shaft Extension, Hydraulic	1
10	40-0719	Motor, Hydraulic	1
11	40-2742	Worm	1
12	40-2743	Worm Gear	1
13	40-3237	Handle, High Torque	1
14	40-3960	Shaft	1
15	40-3961	Body	1
16	40-3962	Housing	1
17	40-3964	Failsafe Nut Ass'y	1
18	50-0072	Bolt	6
19	50-0103	Lock Washer	3
20	50-0154	Roll Pin	1
21	50-0156	Bolt	1
22	50-0157B	Bearing	2
23	50-0157T	Thrust Washer	4
24	50-0158	Roller Bearing	1
25	50-0215	Bolt	4
26	50-0223	Set Screw	2
27	50-0287	Roll Pin	1
28	50-0482	Set Screw	2
29	50-0483	Roller Bearing	1



PROPRIETARY AND CONFIDENTIAL

THE INFORMATION CONTAINED IN THIS DRAWING IS THE SOLE
PROPERTY OF PacSeal.
ANY REPRODUCTION IN PART OR AS A WHOLE WITHOUT THE
WRITTEN PERMISSION OF PacSeal IS PROHIBITED.

TITLE

High Pressure Output Failsafe Hydraulic Operator Assembly Drawing

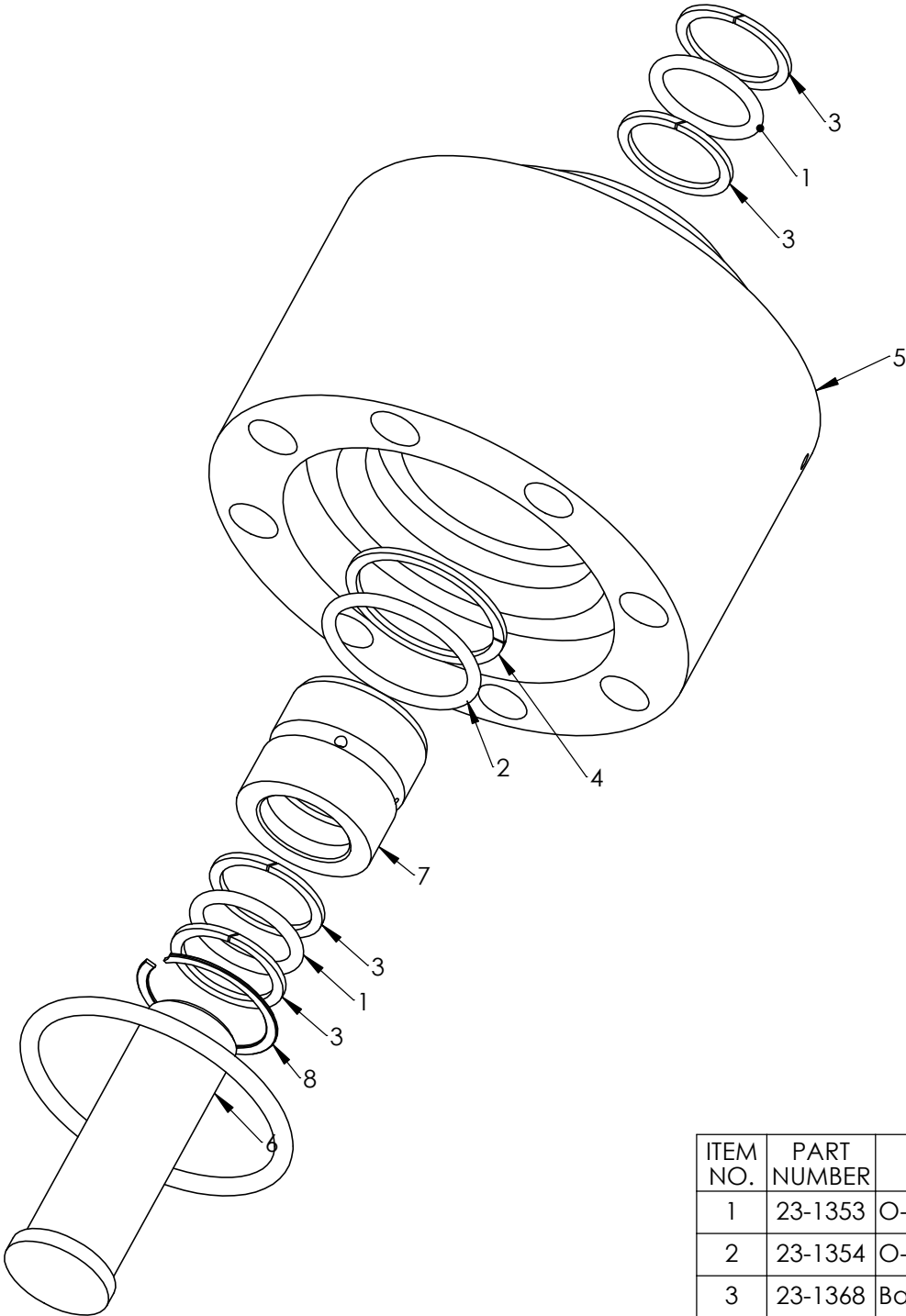
SIZE

A

REV

5

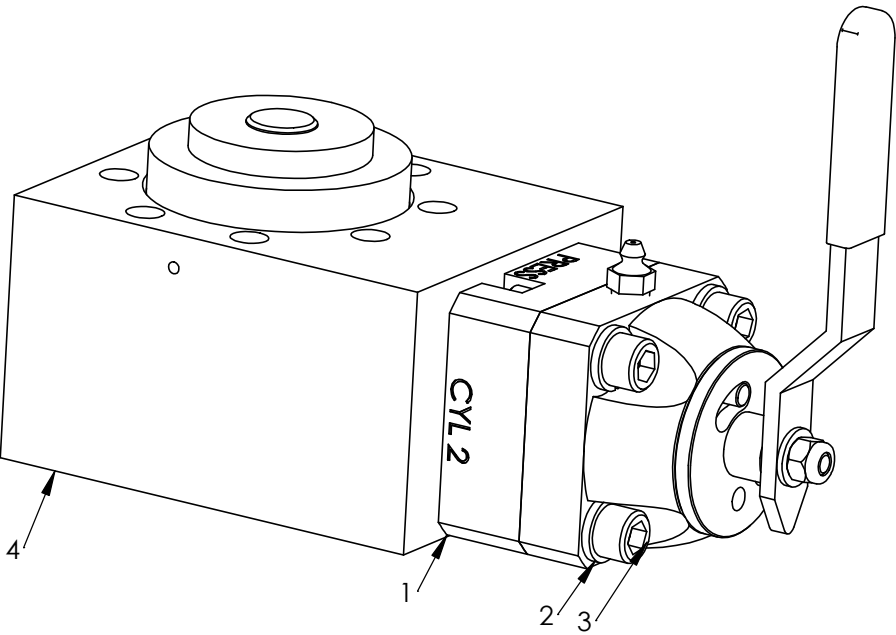
SHEET 20 OF 23



ITEM NO.	PART NUMBER	DESCRIPTION	QTY.
1	23-1353	O-Ring	2
2	23-1354	O-Ring	1
3	23-1368	Backup Ring	4
4	23-1595	Backup Ring	1
5	40-2404	Body, Internal Override	1
6	40-2405	Piston, Internal Override	1
7	40-2436	Bushing, KR-75/140 Int Override	1
8	50-0409	Retaining Ring	1
9	23-1126	O-Ring	1



<p>PROPRIETARY AND CONFIDENTIAL</p> <p>THE INFORMATION CONTAINED IN THIS DRAWING IS THE SOLE PROPERTY OF PacSeal.</p> <p>ANY REPRODUCTION IN PART OR AS A WHOLE WITHOUT THE WRITTEN PERMISSION OF PacSeal IS PROHIBITED.</p>	<p>TITLE Internal Override Bypass Direct Operation Assembly Drawing</p>	<p>SIZE A</p>	<p>REV 5</p>
<p>SHEET 21 OF 23</p>			



ITEM NO.	PART NUMBER	DESCRIPTION	QTY.
1	40-3301	SV-25 Open Center	1
2	50-0103	Lock Washer	4
3	50-0338	SHCS	4
4	40-3459	Internal Override, KR-75	1



<p>PROPRIETARY AND CONFIDENTIAL</p> <p>THE INFORMATION CONTAINED IN THIS DRAWING IS THE SOLE PROPERTY OF PacSeal.</p> <p>ANY REPRODUCTION IN PART OR AS A WHOLE WITHOUT THE WRITTEN PERMISSION OF PacSeal IS PROHIBITED.</p>	<p>TITLE</p> <p>Internal Override Bypass w/ SV-25 Assembly Drawing</p>	SIZE	REV
		A	5
		SHEET 22 OF 23	

ITEM NO.	PART NUMBER	DESCRIPTION	QTY.
1	40-3459	Internal Override, KR-75	1
2	40-4549	SVx-25 Open Center, 2-Pos 45° CW	1
3	50-0103	Lock Washer	4
4	50-0291	Bolt	4

