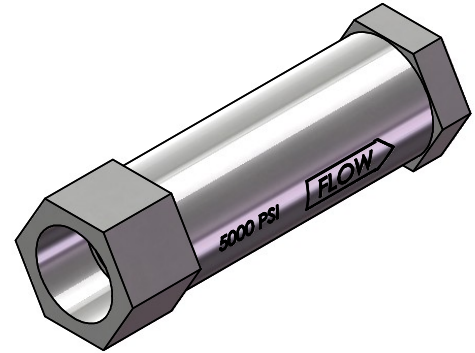
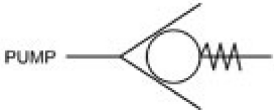


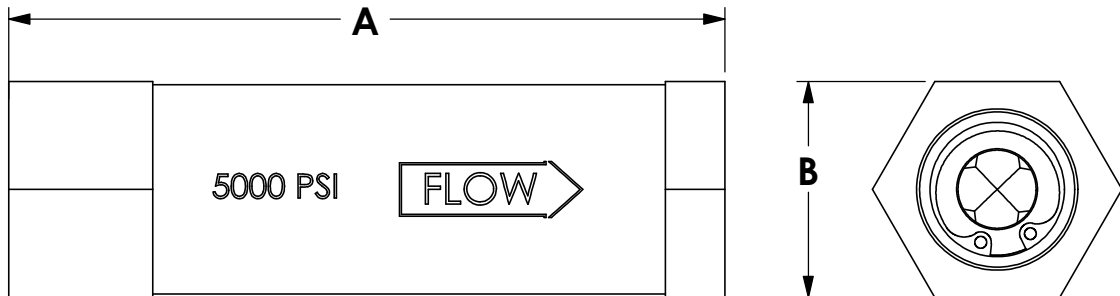
## Check Valves

Rated Working Pressure: 5000 PSI  
 Temperature Rating: -65°F TO 350°F  
 Leak Rate: 0-2 drips/minute  
 Material:

- Body (1/2"): 416 Stainless Steel
- Body (1"): Carbon Steel, Zinc Plated
- Poppet: 416 SS HARDENED
- Spring: 302 SS
- Snap Ring: Zinc Plated Steel



Note:  
 Never rely on the check valve as a block valve for downstream maintenance.



Part No	Model No.	Port size, Female	Length "A" (Inches)	Width "B" (Inches)	Weight (lbs)	Cv
40-1508	CV-50	1/2" NPT	3.73"	1.13"	0.6	5
40-1507	CV-100	1" NPT	4.88"	1.75"	2.1	12

# PACSEAL HYDRAULICS INC.

VALVES, ACCUMULATORS, CONTROLS

**PROPRIETARY AND CONFIDENTIAL**

THE INFORMATION CONTAINED IN THIS DRAWING IS THE SOLE PROPERTY OF PacSeal Hydraulics. ANY REPRODUCTION IN PART OR AS A WHOLE WITHOUT THE WRITTEN PERMISSION OF PacSeal Hydraulics IS PROHIBITED.

SIZE  
**A**

TITLE  
Check Valve  
Data Sheet

REV  
**4**

SCALE: 1:1

SHEET 1 OF 1