



SV-100 Valve Specifications Table of Contents

2. Specifications and Data Sheet
3. Specifications and Data Sheet, continued
4. Porting Configurations Overview
5. Operator Configurations Overview
6. Rotor Flow and Detent Disc 3 and 4-Position Options
7. Rotor Flow and Detent Disc 2-Position Options
8. General Assembly Overview
9. SV-100 Porting Options with Manual Operator Installation Drawing
10. SV-100 with Pin Lock Detent Operator Installation and Assembly Drawing
11. SVX-100 with 2-Position 90° Direct Air Actuation Installation and Assembly Drawing
12. SVX-100 with 3-Position 90° Direct Air Actuation Installation and Assembly Drawing
13. SVX-100 with 2-Position 90° Direct Hydraulic Actuation Installation and Assembly Drawing
14. SVX-100 with 3-Position 90° Spring Centered Direct Hydraulic Actuation Installation and Assembly Drawing
15. SV-100 with Air Cylinder Actuator Installation and Assembly Drawing
16. SV-100 with Hydraulic Cylinder Actuator Installation and Assembly Drawing



All PacSeal Hydraulics' SV Directional Control Valves are designed with ShearFlo® metal-to-metal sealing technology. ShearFlo® sealing technology features:

- High cycle life and anti-wear design is suitable for critical service applications, including contaminated fluids.
- Leak proof, contaminant resistant metal-to-metal seal is accomplished by lapping and polishing hardened stainless steel sealing elements to exacting standards of finish and flatness.
- The sealing elements are spring preloaded and pressure energized, which maintains contact between the two sealing surfaces at all times.

All SV Valves are tested to PacSeal's strict quality control standards to ensure proper function and reliability. Every ShearFlo® sealing component in a repair kit is inspected to ensure trouble-free performance after field maintenance and repair.

PacSeal Hydraulics' rotary SV Directional Control Valves direct fluid flow to one or two cylinder ports, based on the selected rotor and detent combination, as specified in the "Valve Shift Options" table.

The SV valves' modular design accommodates various operator options (manual and remote with manual override) to suit the application at hand. The options available for manual operation are as follows:

- Detented (2 or 3-position)
- Spring Centered (3-position)
- Pin Lock Detent (3-position)

The remote operator options with manual override are available in pneumatic or hydraulic with 2 or 3 positions as follows:

- Actuator Cylinder bracket mounted to valve
- SVX Integral Actuator assembled atop the valve providing higher efficiency and immediate actuation

Various porting options provide further customization, as follows:

- Inline
- Bottom
- Subplate
- Manifold

General Specifications

Port Size	3/4 or 1 in. NPT or SAE ORB
Working Pressure Options (Liquid)	1500, 3000, or 6000 psi
Working Pressure Options (Gas)	2000 or 4000 psi
Return Port Pressure	250 psi (Max) ¹
Proof Pressure	1.5X Working Pressure
Burst Pressure	2X Working Pressure
Cv Factor	9.2
Rated Flow	75 gpm
Temp Rating	-40 to 250°F
Leak Rate	0-1 drip/min.
Fluid Media	Hydraulic oil or lubricated water ²
Weight	See Installation Drawings

Materials

ShearFlo Sealing Components (Rotor and Seal Rings)	Hardened Stainless Steel ²
Shaft	Stainless Steel
Body	Stainless Steel
Housing	Carbon Steel
Handle, Detent Disc and Spacers, Hardware	Plated Carbon Steel
O-rings	Buna-N (N), Viton (V), or EPR (E)
Backup Rings	Teflon

¹ Full rated pressure (3000 or 6000 psi) with All Blocked Rotor option

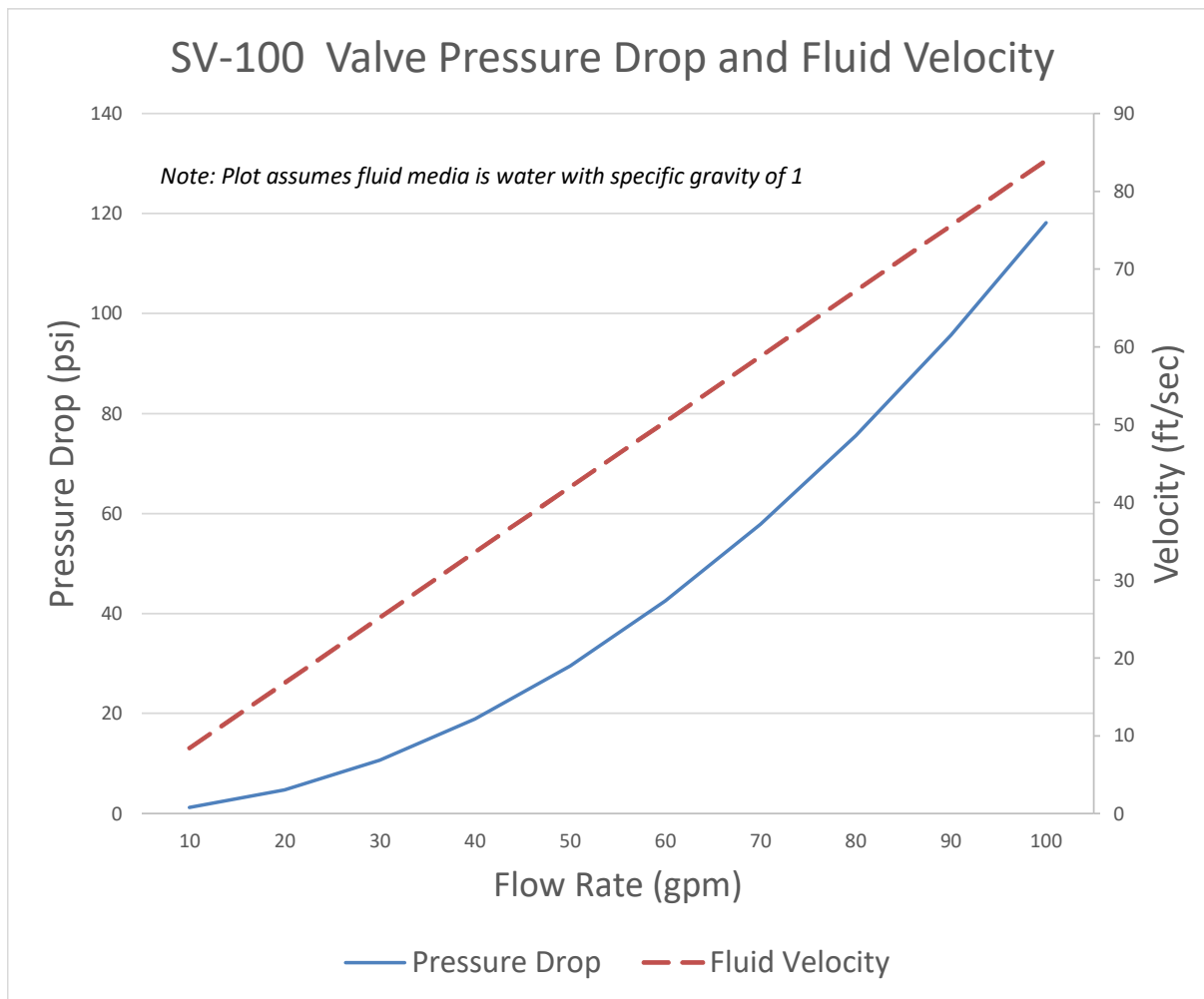
² For water based media, special alloy seal rings may be required - Contact PacSeal for details

Valve Shift Options

Detent Pattern	Valve Options
3-Position (4-way)	All options
2-Position 90° (4-way)	All options
2-Position 45° CW or CCW (3-way)	Selector, Manipulator, Open Center

Rotor Flow Options

Rotor Configuration	Center Position	CW or CCW Position
Manipulator	Cylinders drain to tank and pressure port blocked	Operates a cylinder port while the opposite port is returned to tank
Selector	Return port is open while cylinder and pressure ports are blocked	Operates a cylinder port while the opposite port is returned to tank
Bypass	Return port is open while cylinder and pressure ports are blocked	Operates a cylinder port while the opposite port is blocked
Open Center	Cylinder ports blocked while pressure and return ports are connected	Operates a cylinder port while the opposite port is returned to tank
All Blocked	All ports blocked. Case Drain Required	Operates a cylinder port while the opposite port is returned to tank



SV-100 Handle Torque (lb.-in.)

<u>Rotor Type</u>	<u>At 1500 psi Supply Pressure</u>	<u>At 3000 psi Supply Pressure</u>
<i>Selector</i>	151	240
<i>Bypass*</i>	230	360

**Note: Higher torque is a result of having two supply pressures from C1 and C2*

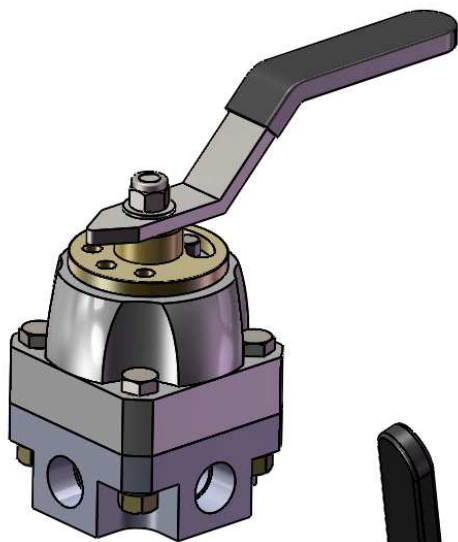
SV-100/6K Handle Torque (lb.-in.)

<u>Rotor Type</u>	<u>At 1500 psi Supply Pressure</u>	<u>At 3000 psi Supply Pressure</u>	<u>At 5000 psi Supply Pressure</u>	<u>At 6000 psi Supply Pressure</u>
<i>Selector</i>	144	210	276	300
<i>Bypass*</i>	250	360	480	480

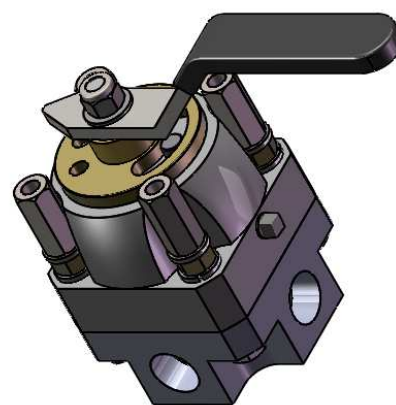
**Note: Higher torque is a result of having two supply pressures from C1 and C2*

Model Code Configurator														
Basic Size	Port Size	Type of Ports	Pressure Rating (PSI)	Port Location	Bolts	Rotor Flow Pattern	Valve/Actuator Positions	Actuation Type	Handle	O-Ring	Actuator Cylinder Add-on ⁵	Nameplate Add-on	Sensor Options ⁶	Other
SV100-	6 3/4"	N NPT	2 1500	I Inline / Side	S Std Short	S Selector	1 3-Pos.	M Standard Manual	M Standard Manual	N Buna-N	None (leave empty)	None (leave empty)	-SP1 Pressure Transducer (P Port)	-HFR High Flow Return ³
	8 1"	S SAE	3 3000	B Bottom	L Long	O Open Center	2 2-Pos. 90°	R Actuator Cylinder	R Actuator Cylinder	V Viton	-AL Air Cylinder, Left Mounted	-0 Blank	-SP2 Pressure Transducer (C1, C2 Ports)	-W Special Alloy Seal Rings ⁴
	M Manifold	6 6000	P Panel Mount	M Manipulator ³	3 2-Pos. 45° CW	S Spring Centered ²	4 2-Pos. 45° CCW	S Spring Centered ²	S Spring Centered ²	E EPR	-AR Air Cylinder, Right Mounted	-1 Pipe Ram	-SP3 Pressure Transducer (P, C1, C2 Ports)	
	B Subplate ¹			N None ²	B Bypass	A All Blocked ¹	5 4-Pos.	L Pin Lock Detent	L Pin Lock Detent		-HL Hyd. Cylinder, Left Mounted	-2 Blind Ram	-P Proximity Switch	
	C Code 61/62 ¹				A All Blocked ¹	D Dual Pressure		W Wing Handle	W Wing Handle		-HR Hyd. Cylinder, Right Mounted	-3 Shear Ram	-PX Proximity Switch, Exp. Proof	
								N/A (see add-on)	V Vertical Handle ³			-4 Annular		
												-5 Choke Line		
												-6 Kill Line		
												-7 Hi-Lo Bypass		
												-8 HCR		
												-9 Flow Line		
SVX100-	6 3/4"	N NPT	2 1500	I Inline / Side		S Selector	1 2-Pos. 90° (4W2P - 4W3P w/ Manual Override)	A Air - Direct Piloted	S Straight	N Buna-N			-L Linear Transducer ⁷	
	8 1"	S SAE	3 3000	B Bottom		O Open Center	2 2-Pos. 45° CW (3W2P)	H Hydraulic - Direct Piloted	W Wing	V Viton			-LX Linear Transducer, Exp. Proof ⁷	
	M Manifold	6 6000			N/A	M Manipulator ³	5 2-Pos. 45° CCW (3W2P)	R Air - Solenoid Piloted	N Indicator ³	E EPR	N/A	See Above		
	B Subplate ¹					B Bypass	3 3-Pos. 90° (4W3P)	U Hydraulic - Solenoid Piloted						
	C Code 61/62 ¹					A All Blocked ¹	4 3-Pos. 90° - Spring Centered ² (4W3P)							
							6 2-Pos. 45° CW - Spring Centered ² (3W2P)							
							7 2-Pos. 45° CCW - Spring Centered ² (3W2P)							

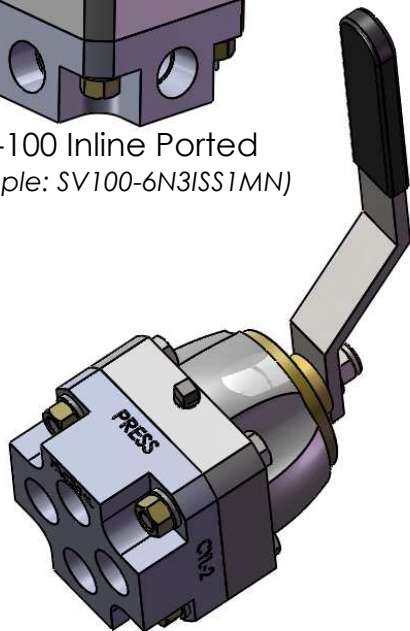
¹Not a standard Option
²For Manifold Mount Option
³No manual override
⁴1500 psi max working pressure
⁵All actuator cylinders are 2-position 90° standard with manual override for 3rd position. 3-pos cylinders may be available but not standard.
⁶24VDC is standard.
⁷M12 connector with 4-20 mA output and 11-28 VDC input is standard.
⁸Manipulator valves that are manifold mounted or in high flow applications, may need to be configured to have high flow return (HFR) - contact PacSeal.
⁹For water based media, special alloy seal rings may be required for optimum performance and durability - contact PacSeal.



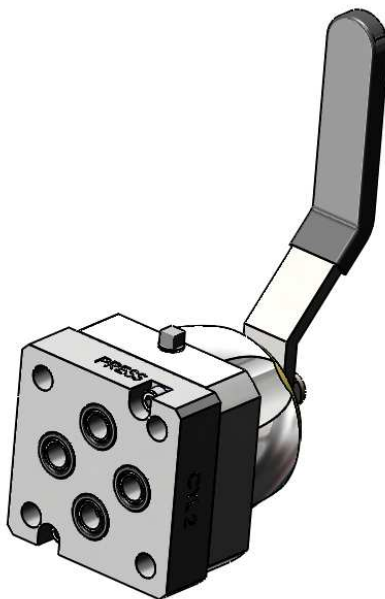
SV-100 Inline Ported
 (Example: SV100-6N3ISS1MN)



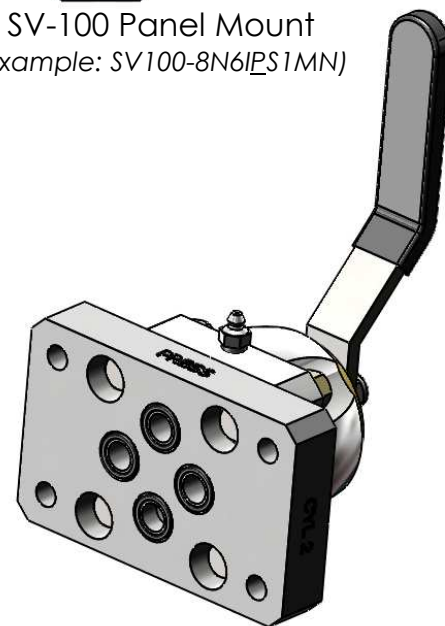
SV-100 Panel Mount
 (Example: SV100-8N6IPS1MN)



SV-100 Bottom Ported
 (Example: SV100-8N3BSS1MN)



SV-100 Manifold Ported
 (Example: SV100-8M3BSS1MN)



SV-100 Subplate Ported
 (Example: SV100-8S3BSS1MN)



PROPRIETARY AND CONFIDENTIAL
 THE INFORMATION CONTAINED IN THIS DRAWING IS THE SOLE PROPERTY OF PacSeal. ANY REPRODUCTION IN PART OR AS A WHOLE WITHOUT THE WRITTEN PERMISSION OF PacSeal IS PROHIBITED.

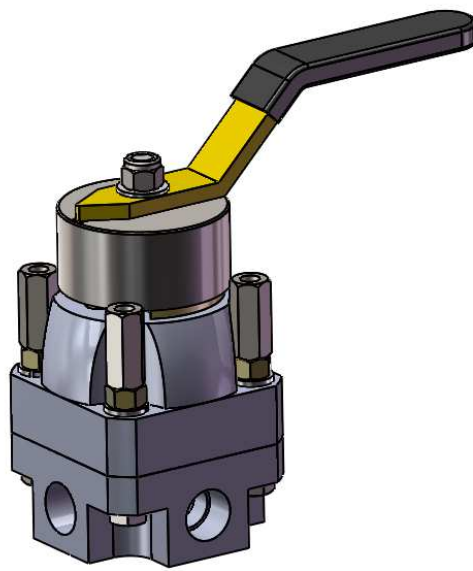
TITLE **SV-100 Porting Configurations Overview**

SIZE **A** REV **10**
 SHEET 4 OF 16

Model Code Configurator

Basic Size	Port Size	Type of Ports	Pressure Rating (PSI)	Port Location	Bolts	Rotor Flow Pattern	Valve/Actuator Positions	Actuation Type	Handle	O-Ring	Actuator Cylinder Add-on ⁵	Nameplate Add-on	Sensor Options ⁶	Other
SV100-	6 3/4" 8 1"	N NPT S SAE M Manifold B Subplate ¹ C Code 61/62 ¹	2 1500 3 3000 6 6000	I Inline / Side B Bottom	S Std Short L Long P Panel Mount N None ²	S Selector O Open Center M Manipulator ³ B Bypass A All Blocked ⁴ D Dual Pressure	1 3-Pos. 2 2-Pos. 90° 3 2-Pos. 45° CW 4 2-Pos. 45° CCW 5 4-Pos.	N/A (see add-on)	M Standard Manual R Actuator Cylinder S Spring Centered ⁴ L Pin Lock Detent W Wing Handle V Vertical Handle ³	N Buna-N V Viton E EPR	None (leave empty) -AL Air Cylinder, Left Mounted -AR Air Cylinder, Right Mounted -HL Hyd. Cylinder, Left Mounted -HR Hyd. Cylinder, Right Mounted	None (leave empty) 0 Blank -1 Pipe Ram -2 Blind Ram -3 Shear Ram -4 Annular -5 Choke Line -6 Kill Line -7 Hi-Lo Bypass -8 HCR -9 Flow Line	-SP1 Pressure Transducer (P Port) -SP2 Pressure Transducer (C1, C2 Ports) -SP3 Pressure Transducer (P, C1, C2 Ports) -P Proximity Switch -PX Proximity Switch, Exp. Proof	-HFR High Flow Return ¹ -W Special Alloy Seal Rings ³
SVX100-	6 3/4" 8 1"	N NPT S SAE M Manifold B Subplate ¹ C Code 61/62 ¹	2 1500 3 3000 6 6000	I Inline / Side B Bottom	N/A	S Selector O Open Center M Manipulator ³ B Bypass A All Blocked ⁴	1 2-Pos. 90° (4W2P - 4W3P w/ Manual Override) 2 2-Pos. 45° CW (3W2P) 5 2-Pos. 45° CCW (3W2P) 3 3-Pos. 90° (4W3P) 4 3-Pos. 90° - Spring Centered ⁴ (4W3P) 6 2-Pos. 45° CW - Spring Centered ⁴ (3W2P) 7 2-Pos. 45° CCW - Spring Centered ⁴ (3W2P)	A Air - Direct Piloted H Hydraulic - Direct Piloted R Air - Solenoid Piloted U Hydraulic - Solenoid Piloted	S Straight W Wing N Indicator ³	N Buna-N V Viton E EPR	N/A	See Above	-L Linear Transducer ⁷ -LX Linear Transducer, Exp. Proof ⁷	

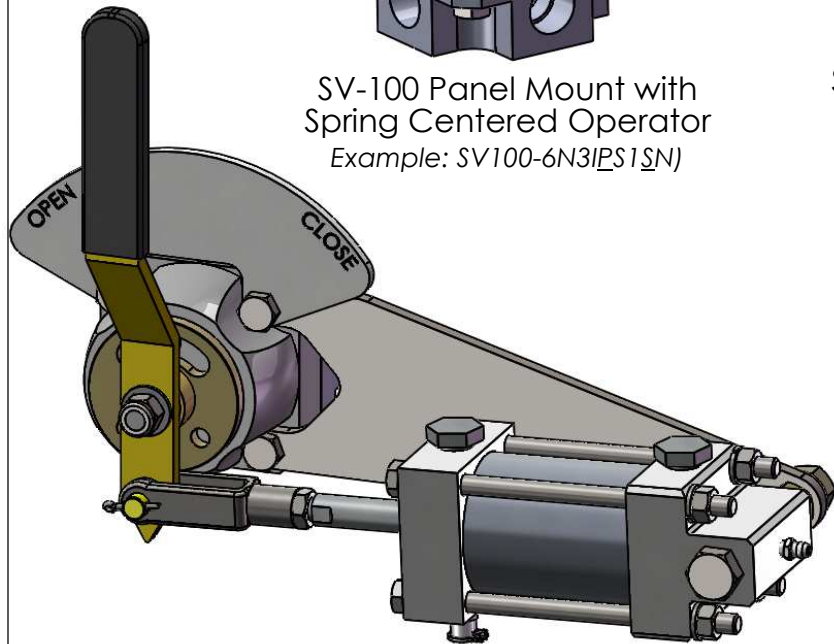
¹ Not a standard Option
² For Manifold Mount Option
³ No manual override
⁴ 1500 psi max working pressure
⁵ All actuator cylinders are 2-position 90° standard with manual override for 3rd position. 3-pos cylinders may be available but not standard.
⁶ 24VDC is standard.
⁷ M12 connector with 4-20 mA output and 11-28 VDC input is standard.
⁸ Manipulator valves that are manifold mounted or in high flow applications, may need to be configured to have high flow return (HFR) - contact PacSeal.
⁹ For water based media, special alloy seal rings may be required for optimum performance and durability - contact PacSeal.



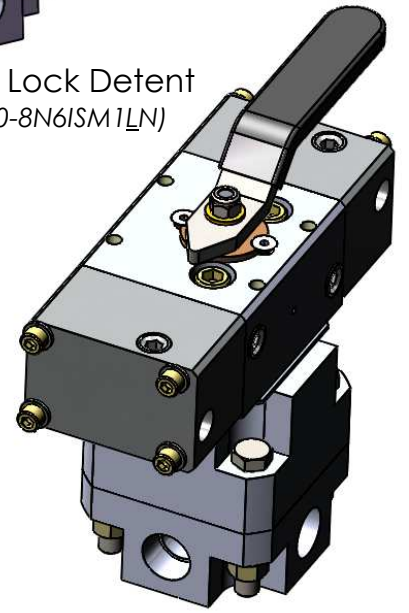
SV-100 Panel Mount with Spring Centered Operator
 Example: SV100-6N3IP51SN



SV-100 with Pin Lock Detent
 (Example: SV100-8N6ISM1LN)



SV-100 with Air Cylinder Actuator
 (Example: SV100-6N3ISS1RN-AR0)

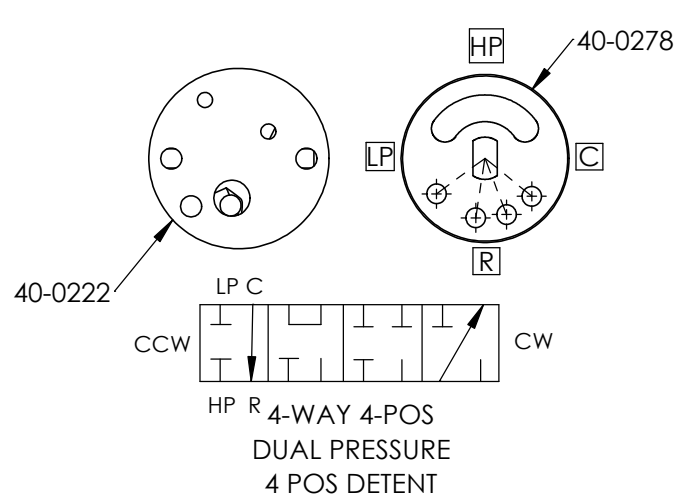
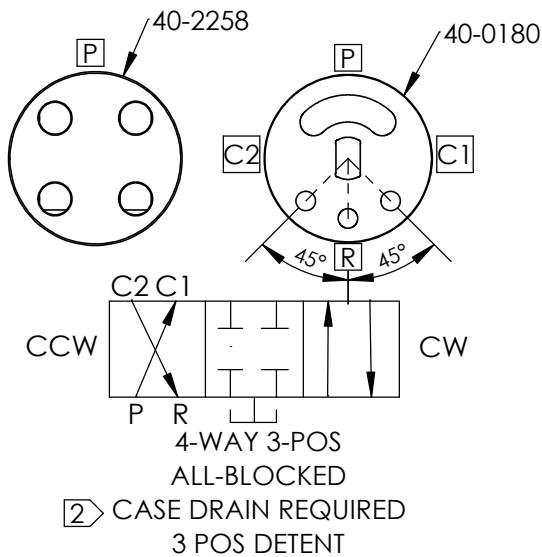
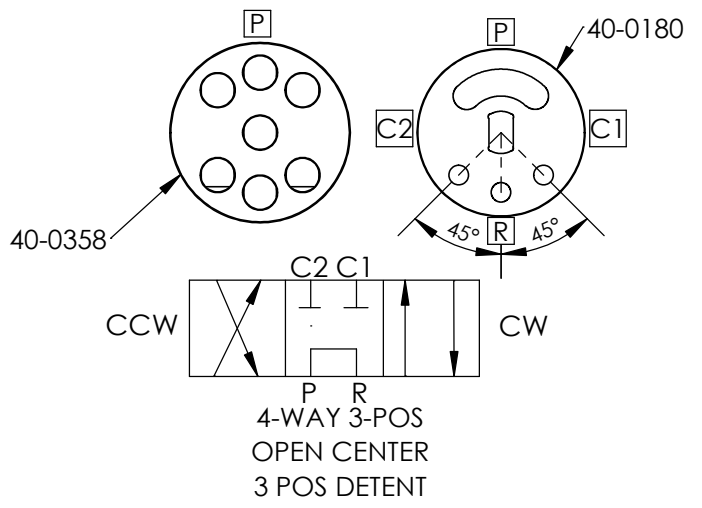
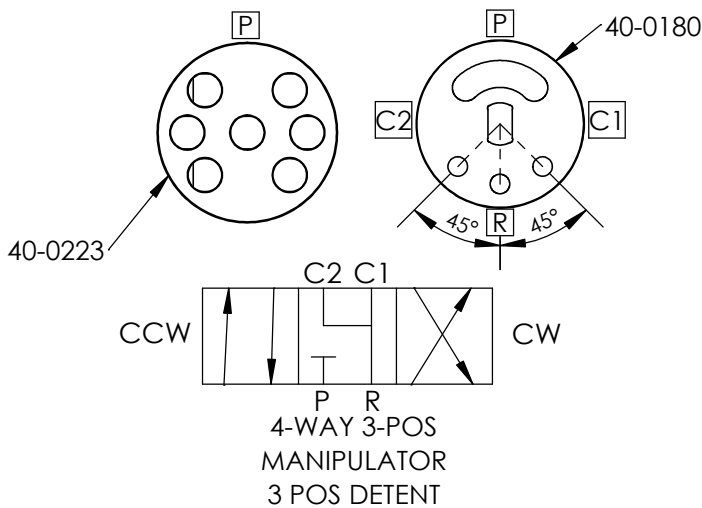
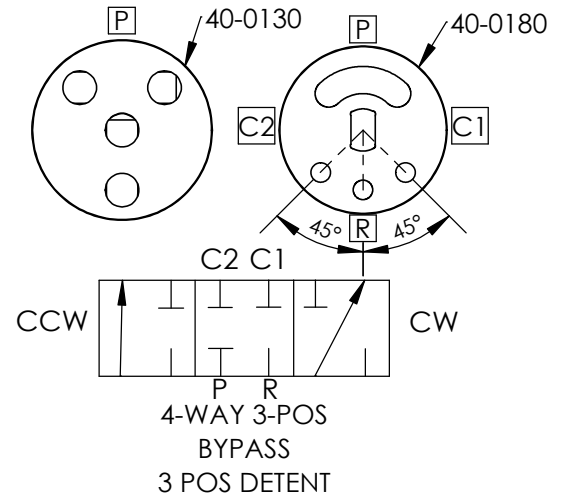
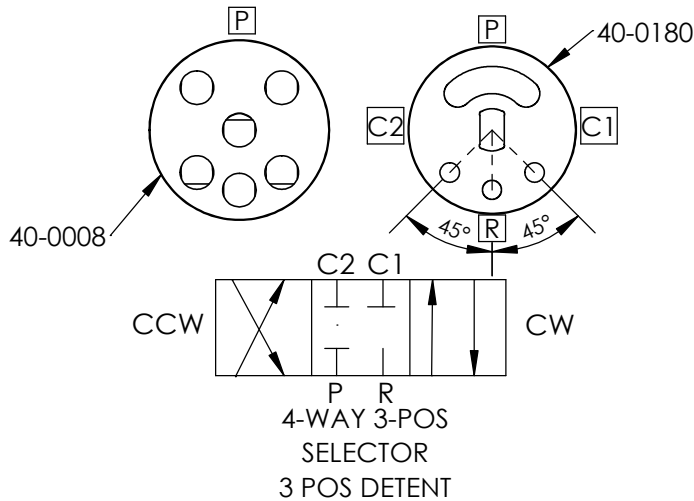


SVX-100 with 2 Pos. 90° Air Actuation
 (Example: SVX100-8N3IS1ASN)



Notes:

- 1. Rotor and Detent Disc Part No.'s displayed
- 2. Not a standard stock item



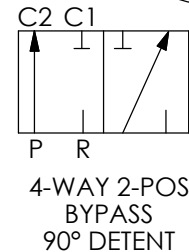
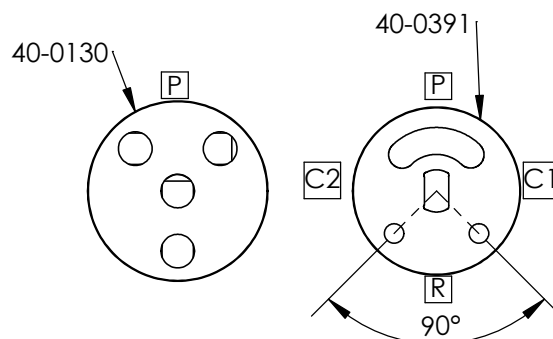
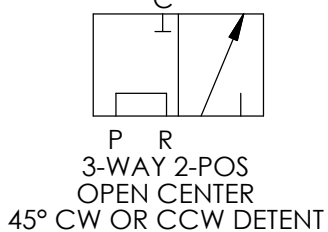
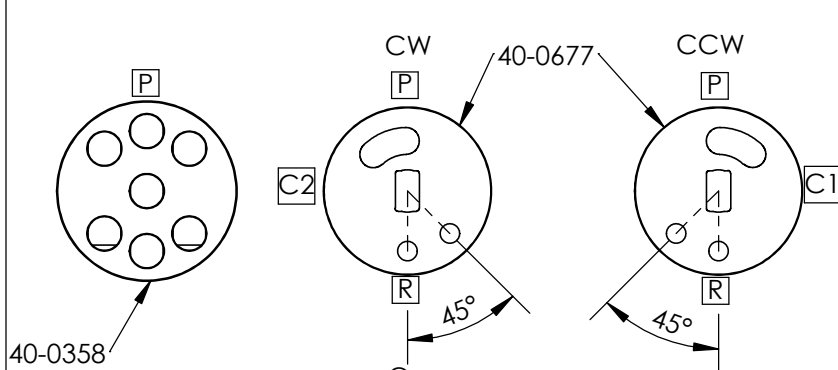
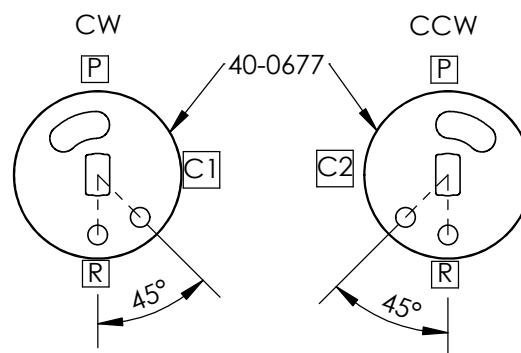
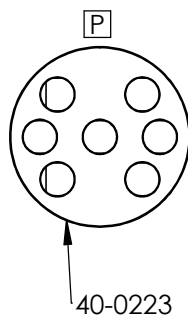
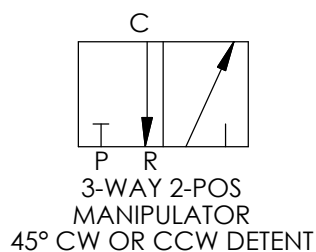
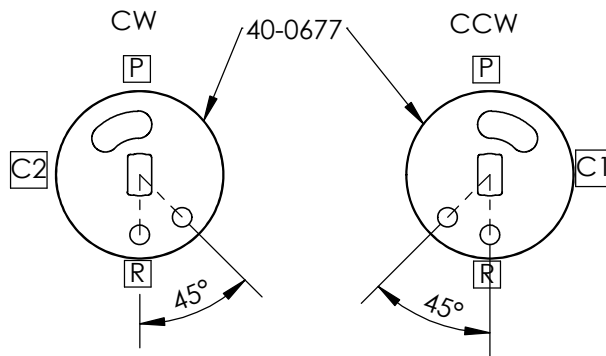
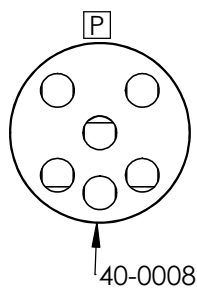
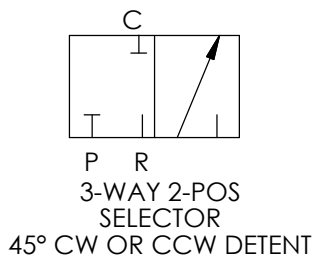
PROPRIETARY AND CONFIDENTIAL
THE INFORMATION CONTAINED IN THIS DRAWING IS THE SOLE PROPERTY OF PacSeal. ANY REPRODUCTION IN PART OR AS A WHOLE WITHOUT THE WRITTEN PERMISSION OF PacSeal IS PROHIBITED.

TITLE
SV-100 Rotor Flow and Detent Disc 3 & 4-Position Options

SIZE A	REV 10
SHEET 6 OF 16	

Notes:

1. Rotor and Detent Disc Part No.'s displayed



PROPRIETARY AND CONFIDENTIAL
THE INFORMATION CONTAINED IN THIS DRAWING IS THE SOLE
PROPERTY OF PacSeal.
ANY REPRODUCTION IN PART OR AS A WHOLE WITHOUT THE
WRITTEN PERMISSION OF PacSeal IS PROHIBITED.

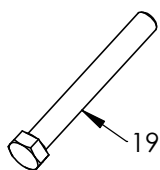
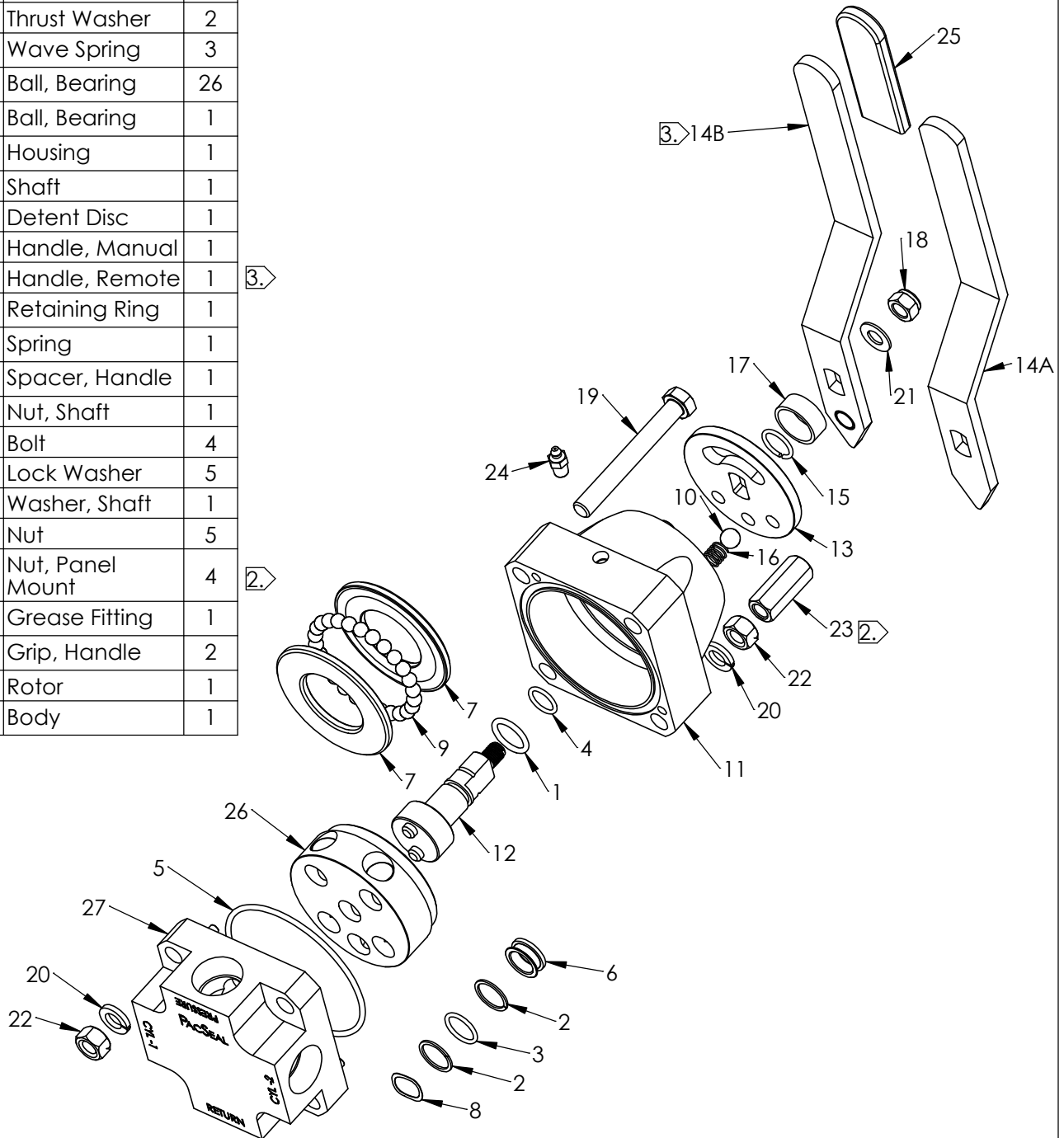
TITLE
**SV-100 Rotor Flow and
Detent Disc
2-Position Options**

SIZE A	REV 10
SHEET 7 OF 16	

ITEM NO.	PART NUMBER	DESCRIPTION	QTY.
1	23-1122	O-Ring	1
2	23-1331	Backup Ring	6
3	23-1332	O-Ring	3
4	23-1352	O-Ring	1
5	23-1363	O-Ring	1
6A	40-0007	Seal Ring (3 ksi)	3
6B	40-0825	Seal Ring (6 ksi)	3
7	40-0009	Thrust Washer	2
8	40-0027	Wave Spring	3
9	40-0049	Ball, Bearing	26
10	40-0174	Ball, Bearing	1
11	40-0175	Housing	1
12	40-0178	Shaft	1
13	40-0180	Detent Disc	1
14A	40-0281	Handle, Manual	1
14B	40-0284	Handle, Remote	1
15	40-0288	Retaining Ring	1
16	40-0295	Spring	1
17	40-0773	Spacer, Handle	1
18	50-0093	Nut, Shaft	1
19	50-0100	Bolt	4
20	50-0104	Lock Washer	5
21	50-0108	Washer, Shaft	1
22	50-0110	Nut	5
23	50-0115	Nut, Panel Mount	4
24	50-0176	Grease Fitting	1
25	50-0236	Grip, Handle	2
26	Note 4	Rotor	1
27	Note 5	Body	1

Notes:

1. Standard Inline Ported SV-100 shown for illustration purposes. (Refer to Model Configuration for options.)
2. Panel Mount Option.
3. Remote Handle Option
4. See sheets 6-7 "Rotor and Detent Shift Options" for replacement parts.
5. See sheet 9 "SV-100 Body Porting Options" for Bodyoption part numbers
6. See sheets 10-16 for other operator and actuator options.
7. Contact PacSeal for Viton or EPR O-rings.
8. Refer to SV-100 Maintenance Instructions for more details.

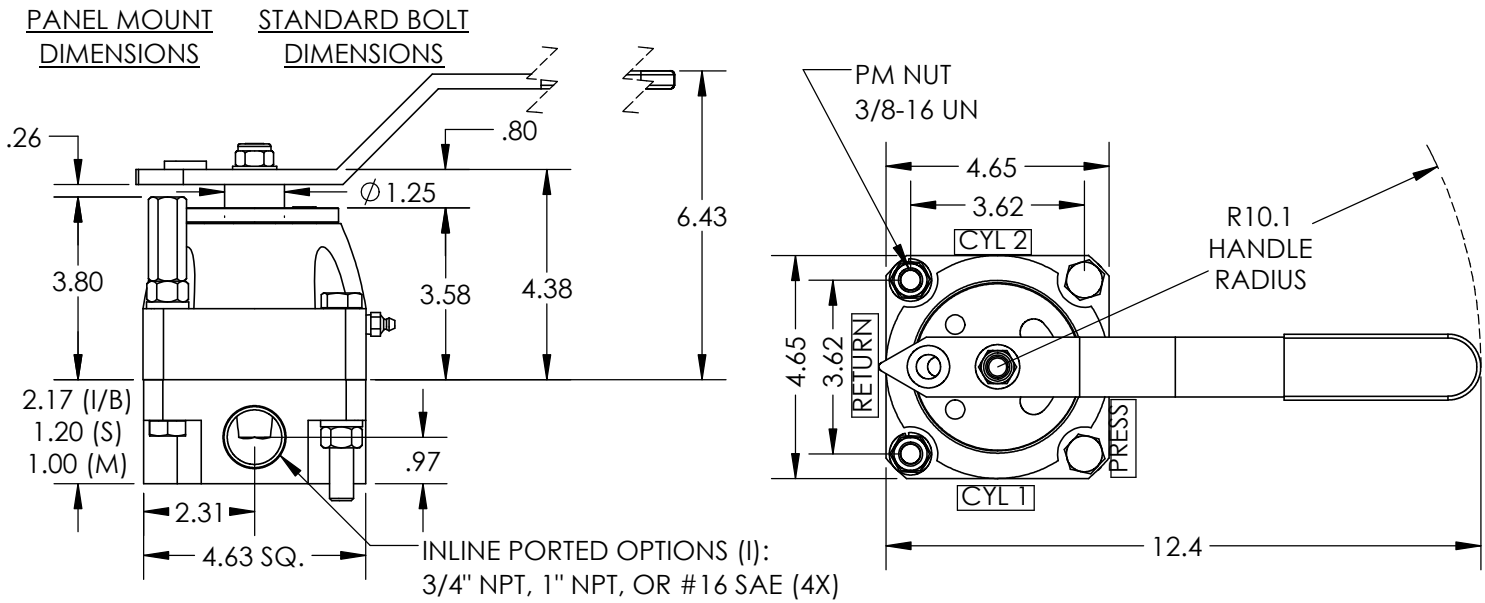


PROPRIETARY AND CONFIDENTIAL
 THE INFORMATION CONTAINED IN THIS DRAWING IS THE SOLE PROPERTY OF PacSeal. ANY REPRODUCTION IN PART OR AS A WHOLE WITHOUT THE WRITTEN PERMISSION OF PacSeal IS PROHIBITED.

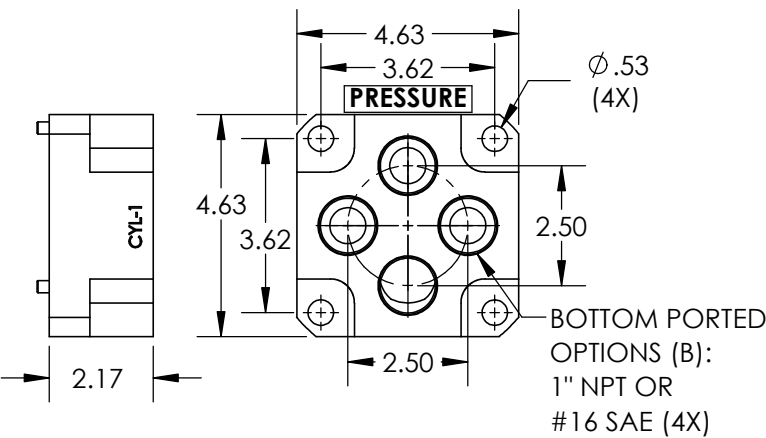
TITLE SV-100
General Assembly Overview

SIZE	REV
A	10
SHEET 8 OF 16	

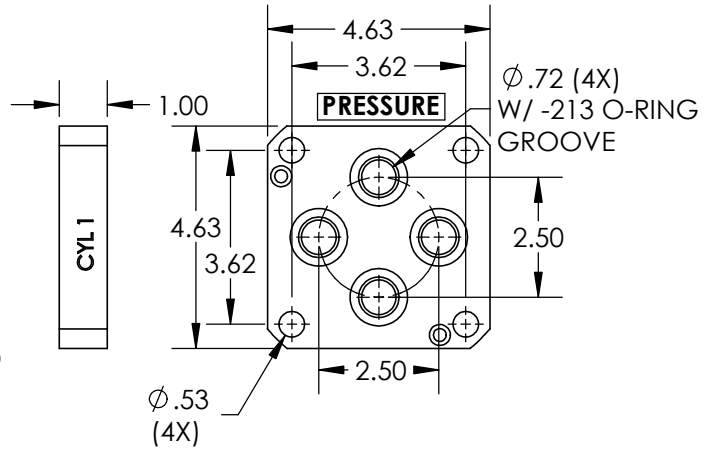
**NPT or SAE Inline Ported (I)
with Manual Operator**



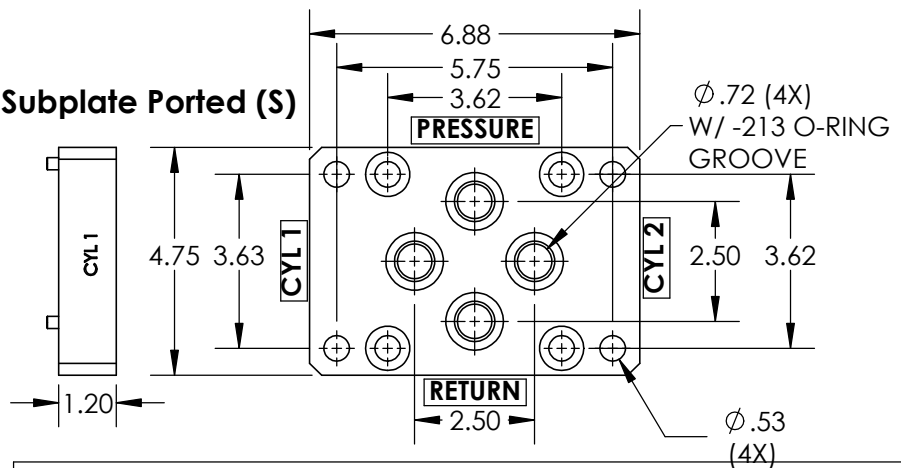
NPT or SAE Bottom Ported (B)



Manifold Ported (M)



Subplate Ported (S)



Body Option Part Numbers		
Body Type	NPT Body Part No.	SAE Body Part No.
Inline [3/4"] (I)	40-0983	N/A
Inline [1"] (I)	40-0982	40-1093
Bottom (B)	40-2547	40-2336
Manifold (M)	40-1109	
Subplate (S)	40-0821	

Weight (lb.) of Valve Porting Options	
Inline (I)	23
Bottom (B)	23
Manifold (M)	20
Subplate (S)	24



PROPRIETARY AND CONFIDENTIAL
THE INFORMATION CONTAINED IN THIS DRAWING IS THE SOLE PROPERTY OF PacSeal. ANY REPRODUCTION IN PART OR AS A WHOLE WITHOUT THE WRITTEN PERMISSION OF PacSeal IS PROHIBITED.

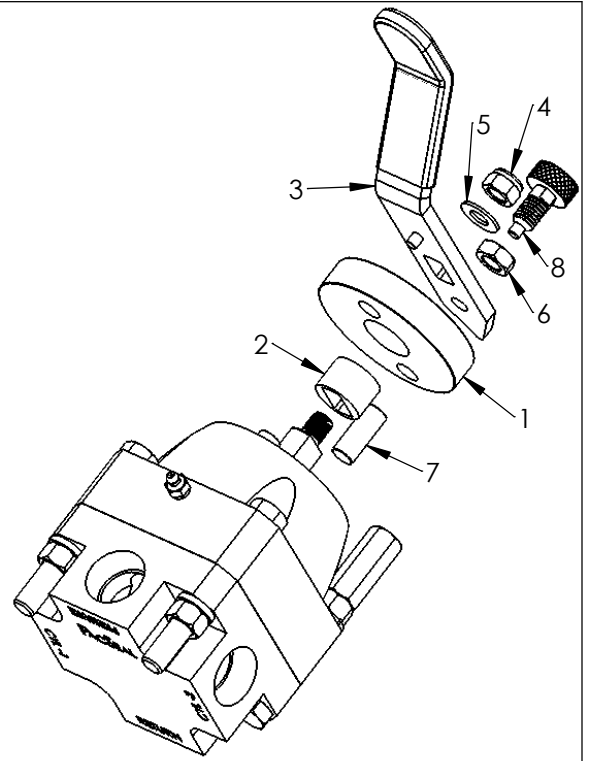
TITLE
**SV-100 Porting Options
w/ Manual Operator
Installation Drawing**

SIZE A	REV 10
SHEET 9 OF 16	

ITEM NO.	PART NUMBER	DESCRIPTION	QTY.
1	40-3635	Detent Plate	1
2	40-3637	Spacer	1
3	40-3882	Handle Ass'y , SV-100 (Short)	1
4	50-0093	Nut, Shaft	1
5	50-0108	Washer, Shaft	1
6	50-0394	Jam Nut	1
7	50-0521	Dowel Pin	1
8	50-0542	Retractable Spring Plunger	1

Notes:

1. Pin Lock Detent operator prevents accidental shifting and ensures two-handed operation.
2. Can easily be retrofitted in field - reference P/N 40-3639 for Pin Lock Detent Kit.
3. See "SV-100 Porting Options with Manual Operator Installation Drawing" (Sheet 9) for other porting details.

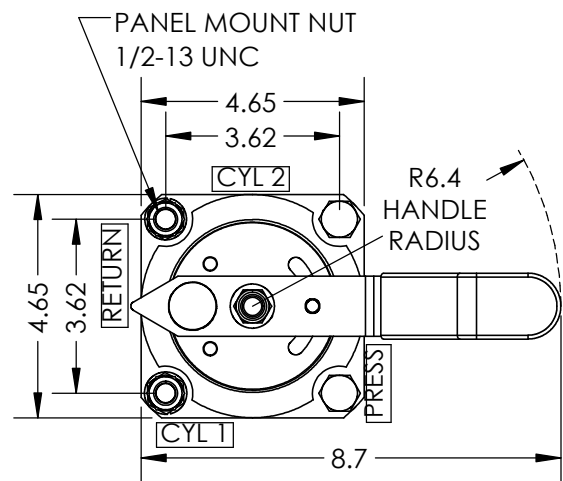
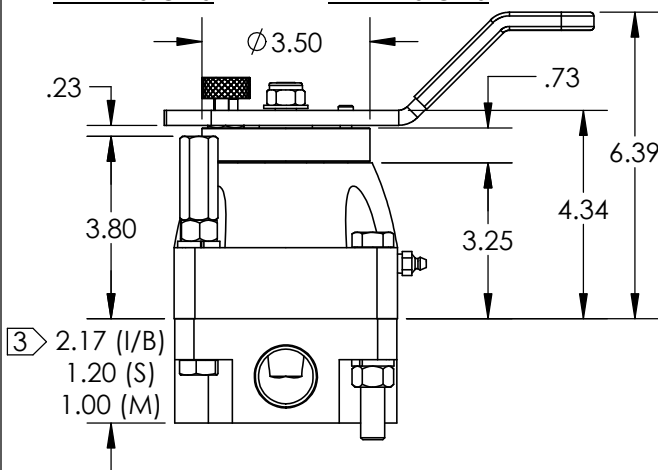


Conversion Instructions:

1. Ensure that the valve is not receiving hydraulic pressure
2. Remove the existing Locknut, Washer, Handle, Detent Disc, Spring, and Ball
3. Add the Pin (7) to the empty hole
4. Align the Detent Plate (1) with the two pins to match the drawing
5. Insert the Spacer (2) into the Detent Plate (1)
6. Assemble the Handle (3) with its pin inside the slot
7. Add the Washer (5) then tighten the Locknut (4) to the Shaft
8. Thread the jam nut (6) to the top of the Retractable Spring Plunger (8)
9. Thread the Retractable Spring Plunger to the Handle until the plunger just makes contact with the bottom of the hole
10. Tighten the jam nut of the plunger to the handle
11. Dry test each position to ensure that the Retractable Spring Plunger is fully engaged in each hole

PANEL MOUNT DIMENSIONS

STANDARD BOLT DIMENSIONS



Weight (lb.) of Valve Porting Options	
Inline (I)	26
Bottom (B)	26
Manifold (M)	23
Subplate (S)	27



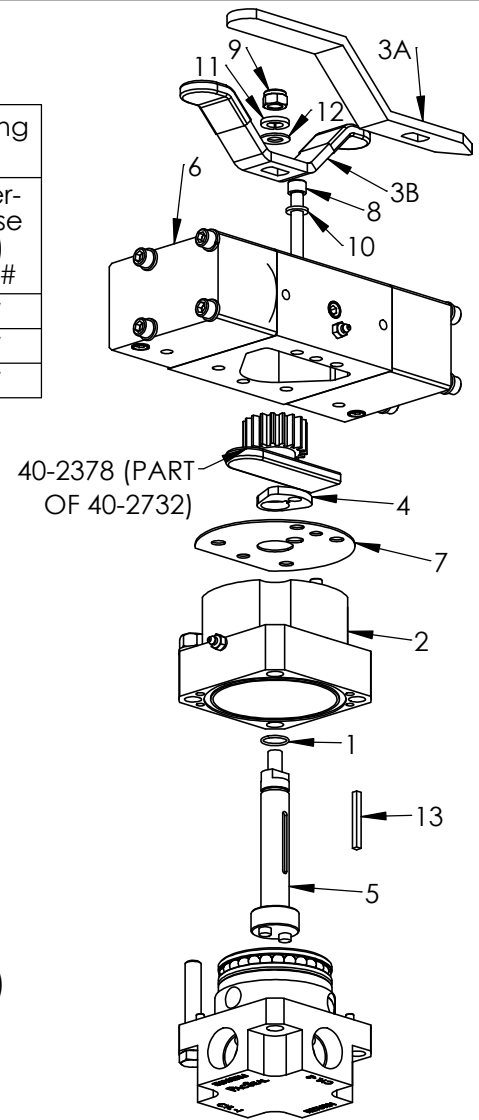
PROPRIETARY AND CONFIDENTIAL
 THE INFORMATION CONTAINED IN THIS DRAWING IS THE SOLE PROPERTY OF PacSeal. ANY REPRODUCTION IN PART OR AS A WHOLE WITHOUT THE WRITTEN PERMISSION OF PacSeal IS PROHIBITED.

TITLE SV-100 Pin Lock Detent Operator Installation and Assembly Drawing

SIZE A **REV 10**
 SHEET 10 OF 16

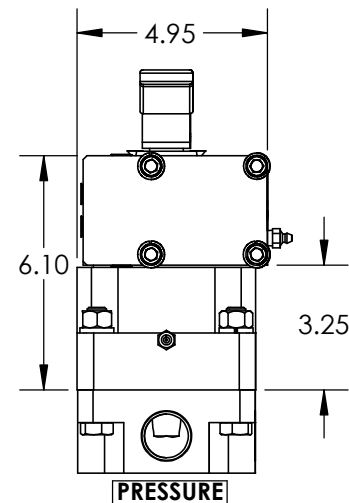
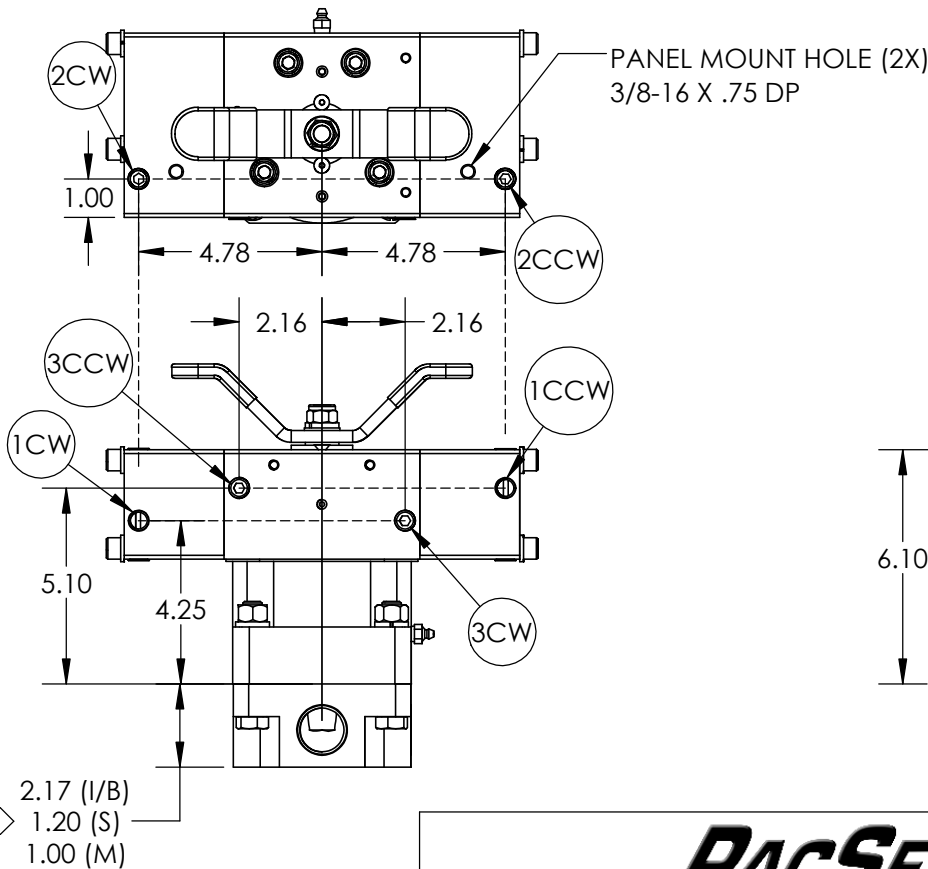
ITEM NO.	PART NUMBER	DESCRIPTION	QTY.
1	23-1326	O-Ring	1
2	40-1370	Housing, SVx-100	1
3A	40-1447	Straight Handle	1
3B	40-2746	Wing Handle	1
4	40-2381	Detent, SVx-100	1
5	40-2695	Shaft, SVx-100	1
6	40-2732	Air Actuator Ass'y, SVx-100	1
7	40-2744	Aluminum Gasket	1
8	50-0079	Bolt	4
9	50-0093	Locknut	1
10	50-0103	Lock Washer	4
11	50-0104	Lock Washer	5
12	50-0108	Washer, Shaft	1
13	50-0402	Key	1

1/4 NPT Air Inlet Porting Location Options	
Clockwise (CW) Option #	Counter-clockwise (CCW) Option #
1CW	1CCW
2CW	2CCW
3CW	3CCW



Notes:

- Model displays SVX with 2-Position 90° Direct Air actuation.
- Center (3rd) position is accomplished with manual override.
- Air Actuator working pressure - 0 to 150 psi
- Actuator material - Aluminum (anodized)
- Retrofitting an existing valve is not an option.
- See "SV-100 Porting Options with Manual Operator Installation Drawing" (Sheet 9) for other porting details.
- Solenoid piloted porting option not shown.



Weight (lb.) of Valve Porting Options	
Inline (I)	39
Bottom (B)	39
Manifold (M)	36
Subplate (S)	40



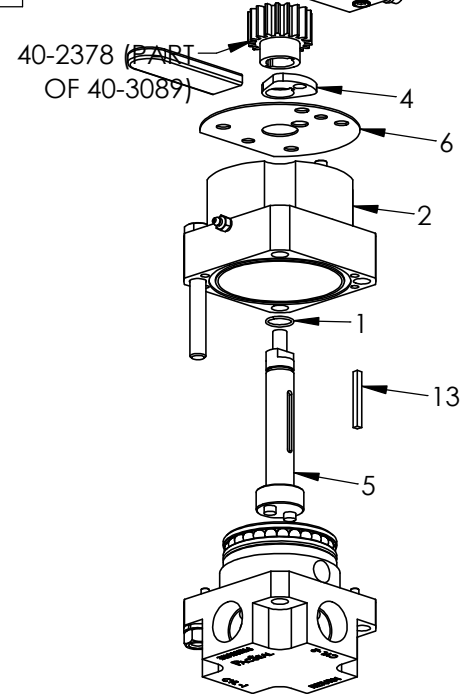
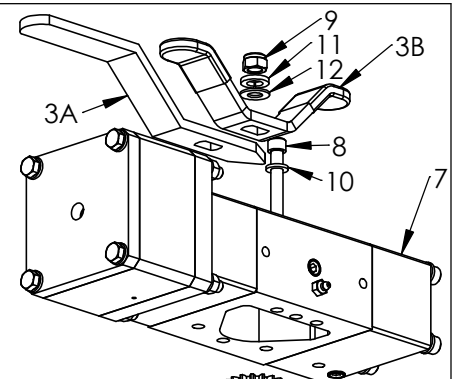
PROPRIETARY AND CONFIDENTIAL
THE INFORMATION CONTAINED IN THIS DRAWING IS THE SOLE PROPERTY OF PacSeal.
ANY REPRODUCTION IN PART OR AS A WHOLE WITHOUT THE WRITTEN PERMISSION OF PacSeal IS PROHIBITED.

TITLE **SVX-100 2-Position 90° Direct Air Actuation Installation and Assembly Drawing**

SIZE	REV
A	10
SHEET 11 OF 16	

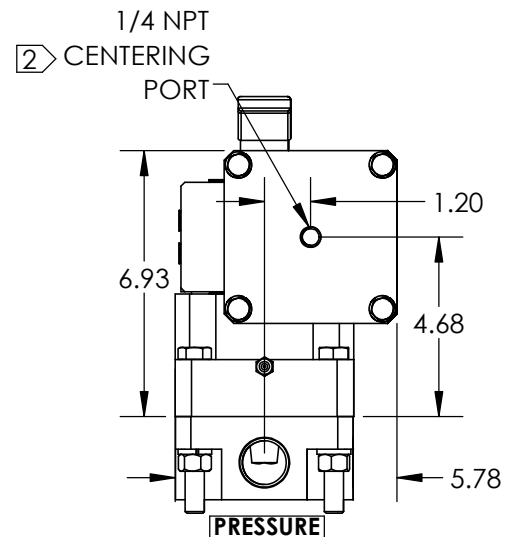
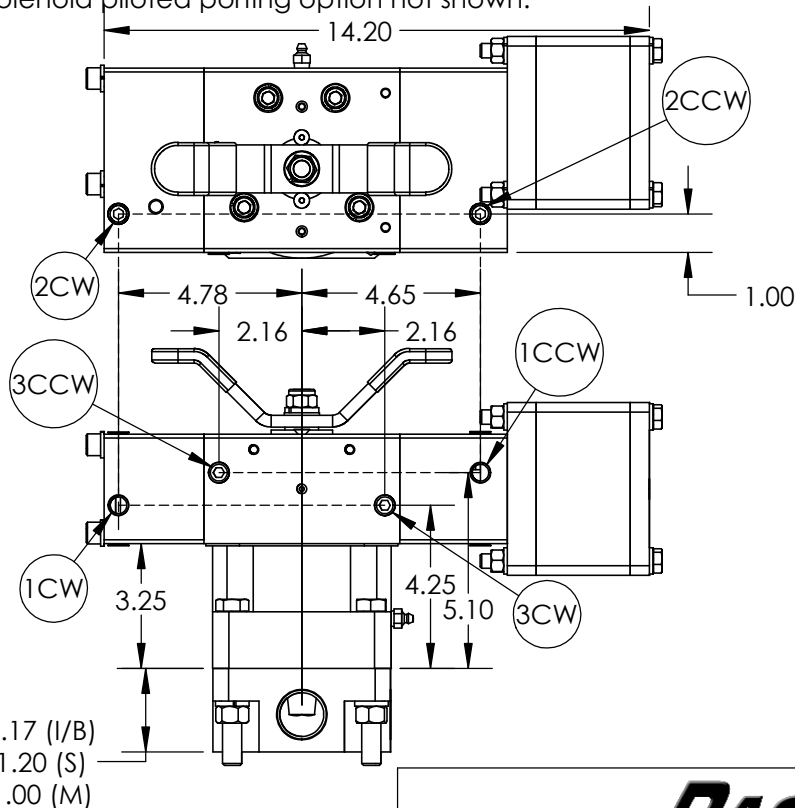
ITEM NO.	PART NUMBER	DESCRIPTION	QTY.
1	23-1528	O-Ring	1
2	40-1370	Housing, SVx-100	1
3A	40-1447	Straight Handle	1
3B	40-2746	Wing Handle	1
4	40-2381	Detent, SVx-100	1
5	40-2695	Shaft, SVx-100	1
6	40-2744	Aluminum Gasket	1
7	40-3089	3-Pos Air Actuator Ass'y, SVx-100	1
8	50-0079	Bolt	4
9	50-0093	Locknut	1
10	50-0103	Lock Washer	4
11	50-0104	Lock Washer	5
12	50-0108	Washer, Shaft	1
13	50-0402	Key	1

1/4 NPT Air Inlet Porting Location Options	
Clockwise (CW) Option #	Counter-clockwise (CCW) Option #
1CW	1CCW
2CW	2CCW
3CW	3CCW



Notes:

- Model displays SVX with 3-Position 90° Direct Air actuation.
- For center position, first apply air pressure to "CENTERING PORT", then apply air pressure to a "CW" port.
- For 2-position operation, apply air to "CW" and "CCW" ports only.
- Air Actuator working pressure - 0 to 150 psi
- Actuator material - Aluminum (anodized)
- Retrofitting an existing valve is not an option.
- See "SV-100 Porting Options with Manual Operator Installation Drawing" (Sheet 9) for other porting details.
- Solenoid piloted porting option not shown.



Weight (lb.) of Valve Porting Options	
Inline (I)	48
Bottom (B)	48
Manifold (M)	45
Subplate (S)	49



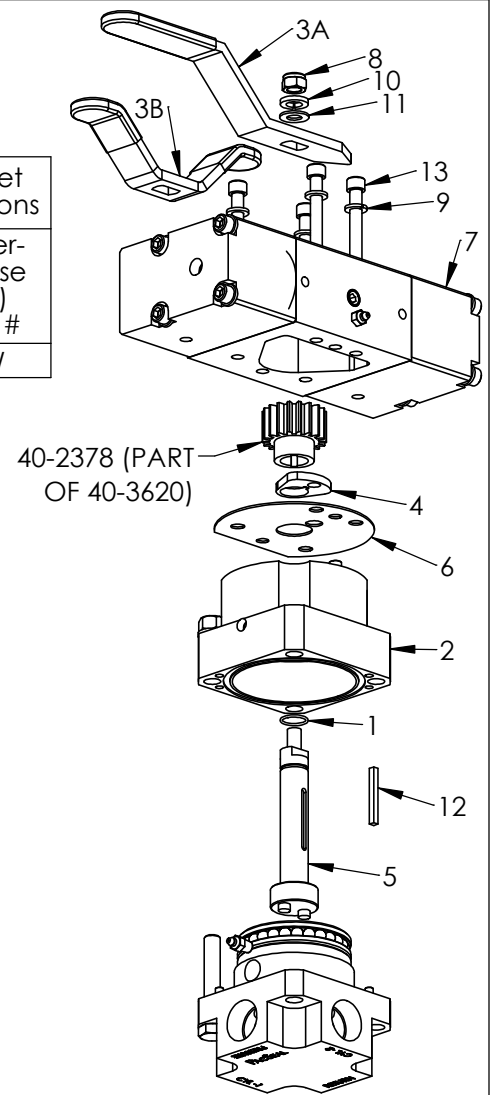
PROPRIETARY AND CONFIDENTIAL
 THE INFORMATION CONTAINED IN THIS DRAWING IS THE SOLE PROPERTY OF PacSeal.
 ANY REPRODUCTION IN PART OR AS A WHOLE WITHOUT THE WRITTEN PERMISSION OF PacSeal IS PROHIBITED.

TITLE **SVX-100 3-Position 90° Direct Air Actuation Installation and Assembly Drawing**

SIZE **A** REV **10**
 SHEET 12 OF 16

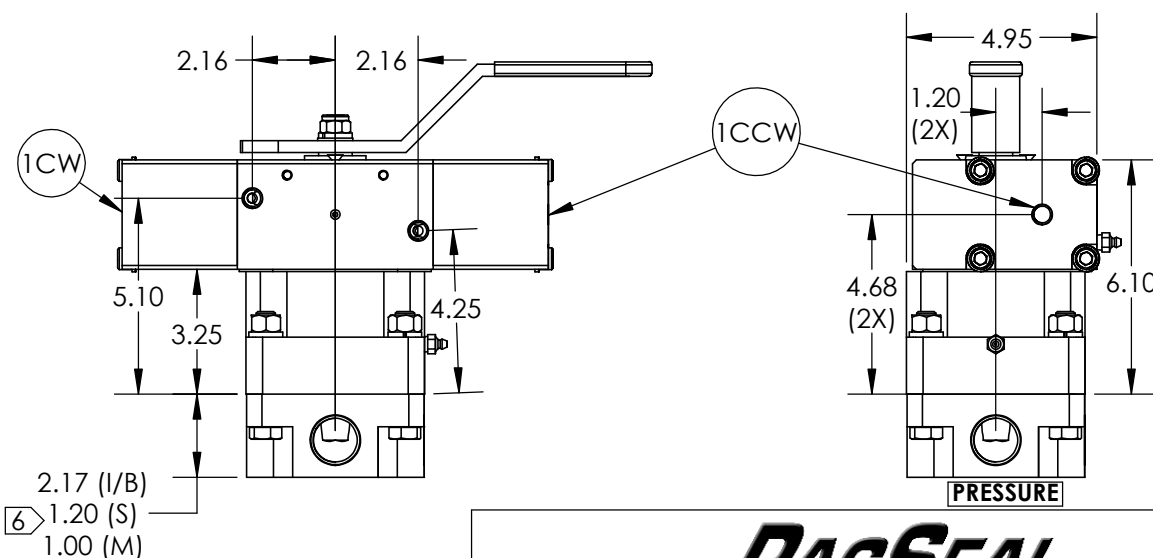
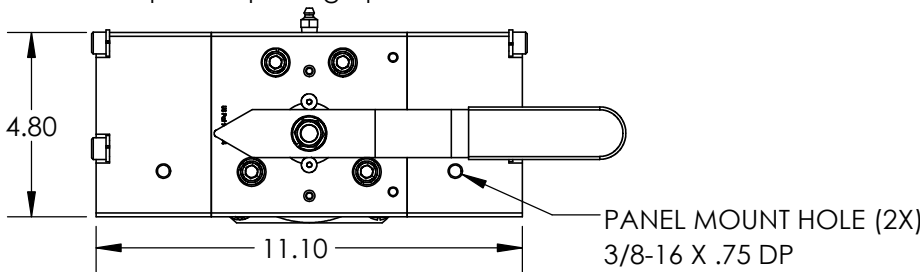
ITEM NO.	PART NUMBER	DESCRIPTION	QTY.
1	23-1326	O-Ring	1
2	40-1370	Housing, SVx-100	1
3A	40-1447	Straight Handle	1
3B	40-2746	Wing Handle	1
4	40-2381	Detent, SVx-100	1
5	40-2695	Shaft, SVx-100	1
6	40-2744	Aluminum Gasket	1
7	40-3620	SVx-100 Hyd Actuator Ass'y	1
8	50-0093	Locknut	1
9	50-0103	Lock Washer	4
10	50-0104	Lock Washer	5
11	50-0108	Washer, Shaft	1
12	50-0402	Key	1
13	50-0518	Bolt	4

1/4 NPT Hydraulic Inlet Porting Location Options	
Clockwise (CW) Option #	Counter-clockwise (CCW) Option #
1CW	1CCW



Notes:

- Model displays SVX with 2-Position 90° Direct Hydraulic actuation.
- Center (3rd) position is accomplished with manual override.
- Hydraulic Actuator working pressure - 800 to 1500 psi
- Actuator material - Aluminum (anodized)
- Retrofitting an existing valve is not an option.
- See "SV-100 Porting Options with Manual Operator Installation Drawing" (Sheet 9) for other porting details.
- Solenoid piloted porting option not shown.



Weight (lb.) of Valve Porting Options	
Inline (I)	41
Bottom (B)	41
Manifold (M)	38
Subplate (S)	42



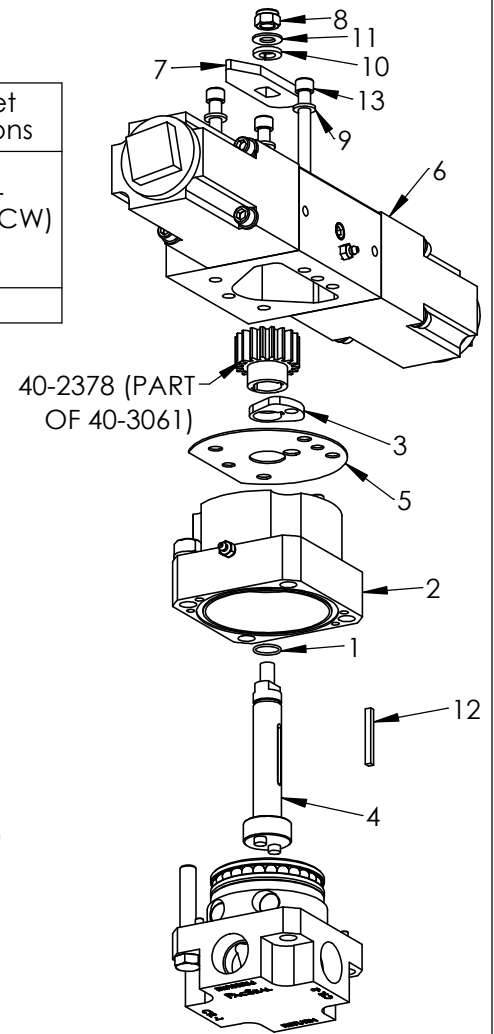
PROPRIETARY AND CONFIDENTIAL
 THE INFORMATION CONTAINED IN THIS DRAWING IS THE SOLE PROPERTY OF PacSeal.
 ANY REPRODUCTION IN PART OR AS A WHOLE WITHOUT THE WRITTEN PERMISSION OF PacSeal IS PROHIBITED.

TITLE **SVX-100 2-Position 90° Direct Hydraulic Actuation Installation and Assembly Drawing**

SIZE **A** REV **10**
 SHEET 13 OF 16

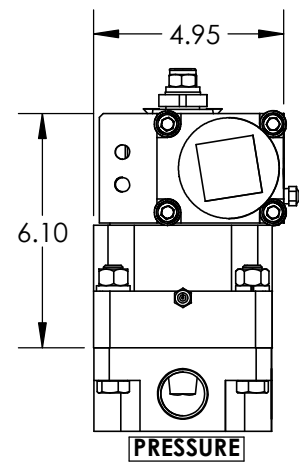
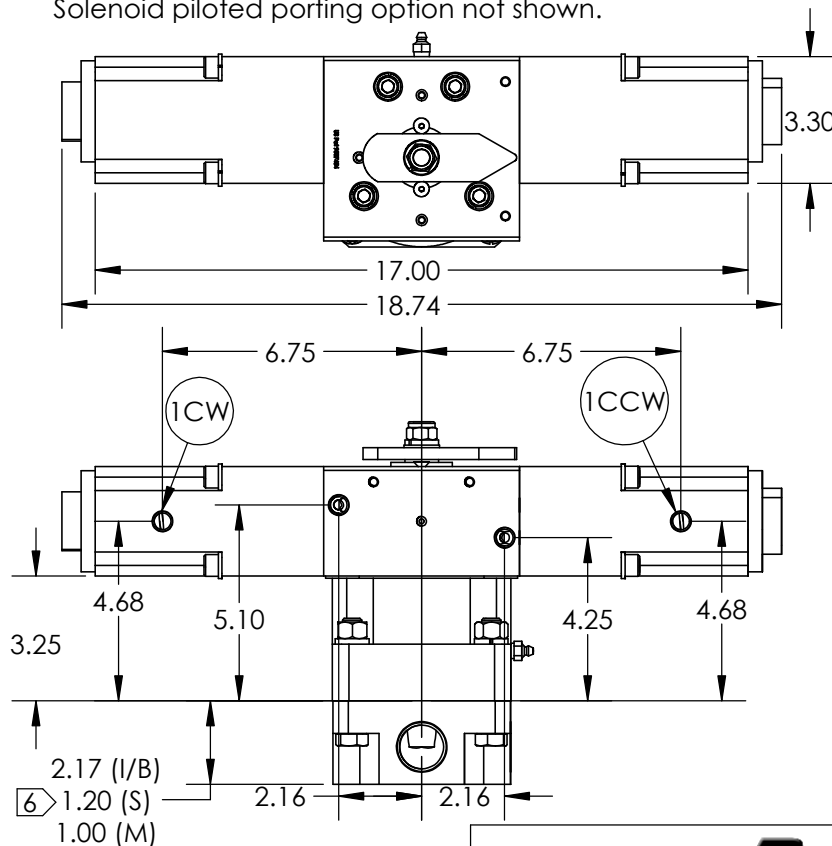
ITEM NO.	PART NUMBER	DESCRIPTION	QTY.
1	23-1326	O-Ring	1
2	40-1370	Housing, SVx-100	1
3	40-2381	Detent, SVx-100	1
4	40-2695	Shaft, SVx-100	1
5	40-2744	Aluminum Gasket	1
6	40-3061	Hyd Actuator Ass'y, SVX-100	1
7	40-3165	Indicator	1
8	50-0093	Locknut	1
9	50-0103	Lock Washer	4
10	50-0104	Lock Washer	5
11	50-0108	Washer, Shaft	1
12	50-0402	Key	1
13	50-0518	Bolt	4

1/4 NPT Hydraulic Inlet Porting Location Options	
Clockwise (CW) Option #	Counter-clockwise (CCW) Option #
1CW	1CCW



Notes:

- Model displays SVX with 3-Position 90° Spring Centered Direct Hydraulic actuation.
- Center (3rd) position is accomplished when hydraulic pilot pressure is relieved.
- Hydraulic Actuator working pressure - 800 to 1500 psi.
- Actuator material - Aluminum (anodized)
- Retrofitting an existing valve is not an option.
- See "SV-100 Porting Options with Manual Operator Installation Drawing" (Sheet 9) for other porting details.
- Solenoid piloted porting option not shown.



Weight (lb.) of Valve Porting Options	
Inline (I)	59
Bottom (B)	59
Manifold (M)	56
Subplate (S)	60

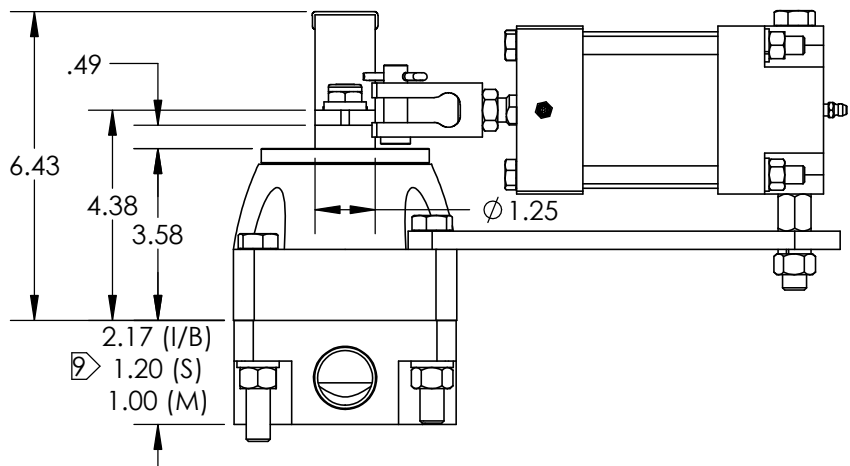
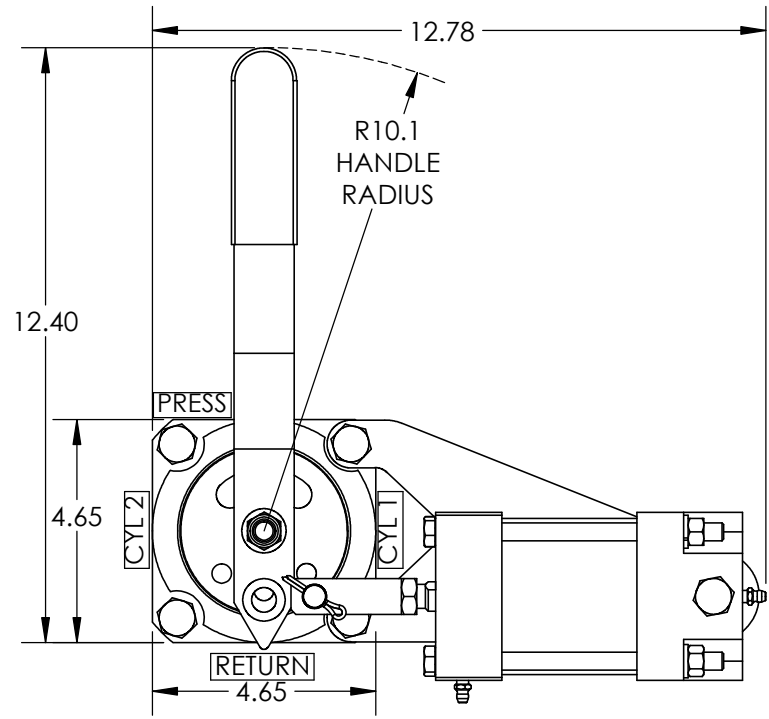
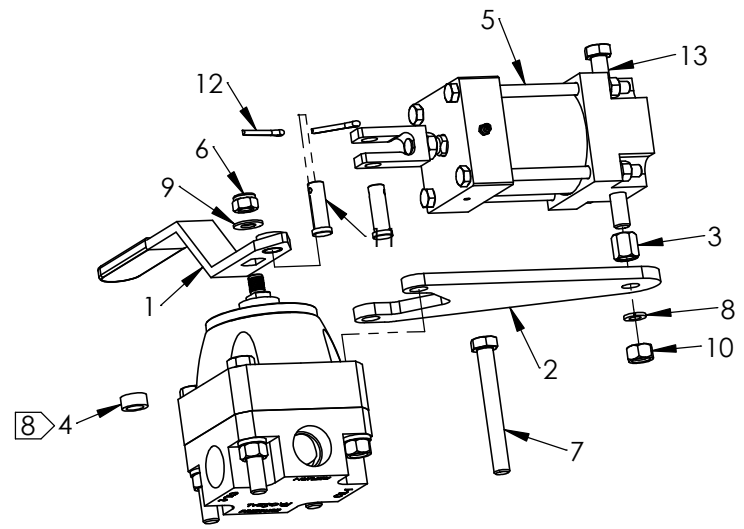


PROPRIETARY AND CONFIDENTIAL
 THE INFORMATION CONTAINED IN THIS DRAWING IS THE SOLE PROPERTY OF PacSeal. ANY REPRODUCTION IN PART OR AS A WHOLE WITHOUT THE WRITTEN PERMISSION OF PacSeal IS PROHIBITED.

TITLE SVX-100 3-Position 90° Spring Centered Direct Hydraulic Actuation Installation and Assembly Drawing

SIZE	REV
A	10
SHEET 14 OF 16	

ITEM NO.	PART NUMBER	DESCRIPTION	QTY.
1	40-0284	Handle, Remote	1
2	40-0455	Bracket	1
3	40-0558	Spacer Nut	1
4	40-0559	Spacer	1
5	40-3723	Air Actuator Cylinder Assembly, AAC-302	1
6	50-0093	Nut, Shaft	1
7	50-0100	Bolt	1
8	50-0103	Lock Washer	1
9	50-0108	Washer, Shaft	1
10	50-0110	Hex Nut	1
11	50-0145	Clevis Pin	1
12	50-0146	Cotter Pin	1
13	50-0165	Hex Head Bolt	1



Notes:

- Model displays Right Mounted Air Cylinder Actuator
- Cylinder Positions - 2
- Cylinder Air working pressure - 80 to 150 psi
- Cylinder Rating - 250 psi
- Cylinder Stroke - 2.13 in.
- Cylinder Bore/Rod - 3 X 5/8 in.
- Actuator Material - Aluminum (anodized)
- Ⓢ Spacer is only necessary if a name plate is used.
- Ⓟ See "Porting Options with Manual Operator Installation Drawing" (Sheet 9) for installation dimensions of other porting options.
- Ⓣ For air cylinder and bracket kit assembly (retrofitable) please request part number 40-3802.

Weight (lb.) of Valve Porting Options	
Inline (I)	34
Bottom (B)	34
Manifold (M)	31
Subplate (S)	35

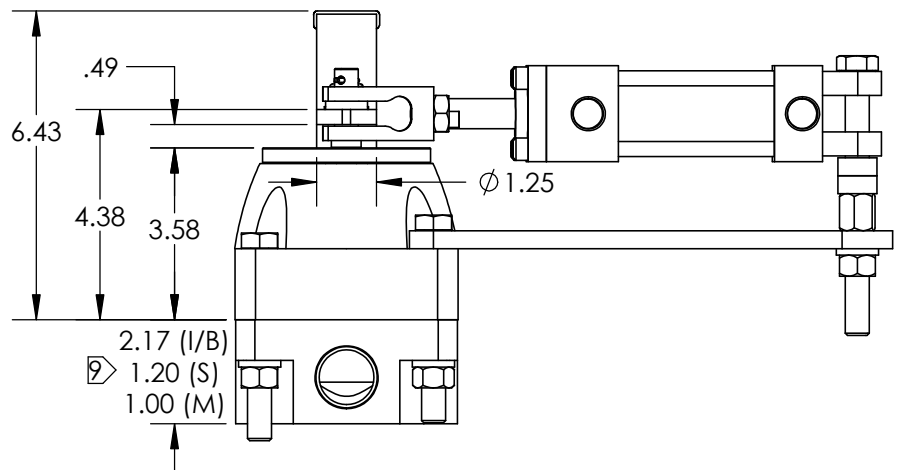
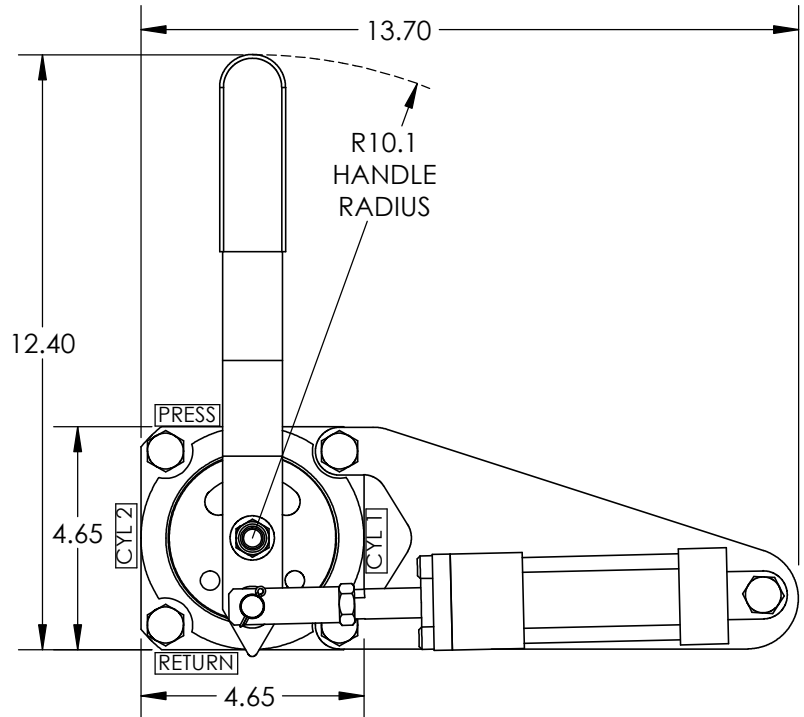
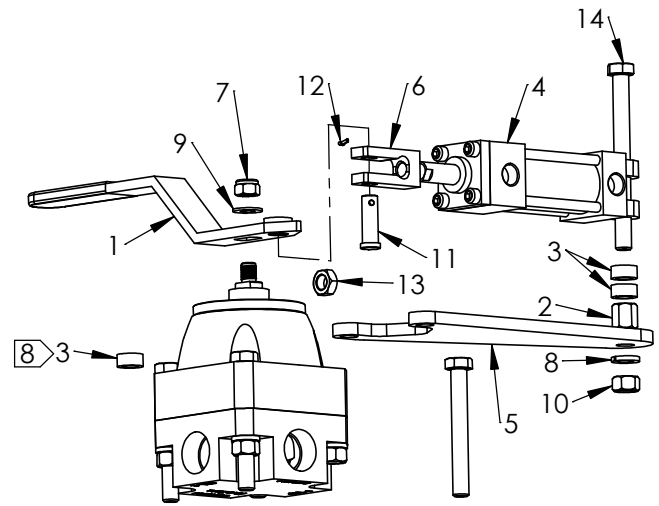
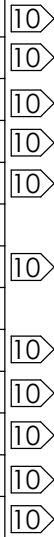


PROPRIETARY AND CONFIDENTIAL
 THE INFORMATION CONTAINED IN THIS DRAWING IS THE SOLE PROPERTY OF PacSeal. ANY REPRODUCTION IN PART OR AS A WHOLE WITHOUT THE WRITTEN PERMISSION OF PacSeal IS PROHIBITED.

TITLE
SV-100 Air Cylinder Actuator Installation and Assembly Drawing

SIZE **A** REV **10**
 SHEET 15 OF 16

ITEM NO.	PART NUMBER	DESCRIPTION	QTY.
1	40-0284	Handle, Remote	1
2	40-0558	Spacer Nut	1
3	40-0559	Spacer	3
4	40-1412	Hyd Cylinder	1
5	40-1413	Bracket	1
6	40-2149	Clevis	1
7	50-0093	Nut, Shaft	1
8	50-0104	Lock Washer	1
9	50-0108	Washer, Shaft	1
10	50-0110	Nut	1
11	50-0145	Clevis Pin	1
12	50-0146	Cotter Pin	1
13	50-0163	Hex Jam Nut	1
14	50-0165	Bolt	1



Notes:

1. Model displays Right Mounted Hydraulic Cylinder Actuator
2. Hydraulic working pressure - 500 to 1200 psi
3. Cylinder Positions - 2
4. Cylinder Rating - 1500 psi
5. Cylinder Stroke - 2.13 in.
6. Cylinder Bore/Rod - 1-1/2 X 5/8 in.
7. Actuator Material - Carbon Steel
8. Third Spacer is only necessary if a name plate is used.
9. See "Porting Options with Manual Operator Installation Drawing" (Sheet 9) for installation dimensions of other porting options.
10. For hydraulic cylinder and bracket kit assembly (retrofitable) please request part number 40-2088.

Weight (lb.) of Valve Porting Options	
Inline (I)	31
Bottom (B)	31
Manifold (M)	28
Subplate (S)	32



PROPRIETARY AND CONFIDENTIAL
 THE INFORMATION CONTAINED IN THIS DRAWING IS THE SOLE PROPERTY OF PacSeal.
 ANY REPRODUCTION IN PART OR AS A WHOLE WITHOUT THE WRITTEN PERMISSION OF PacSeal IS PROHIBITED.

TITLE **SV-100 Hydraulic Cylinder Actuator Installation and Assembly Drawing**

SIZE **A** REV **10**
 SHEET 16 OF 16