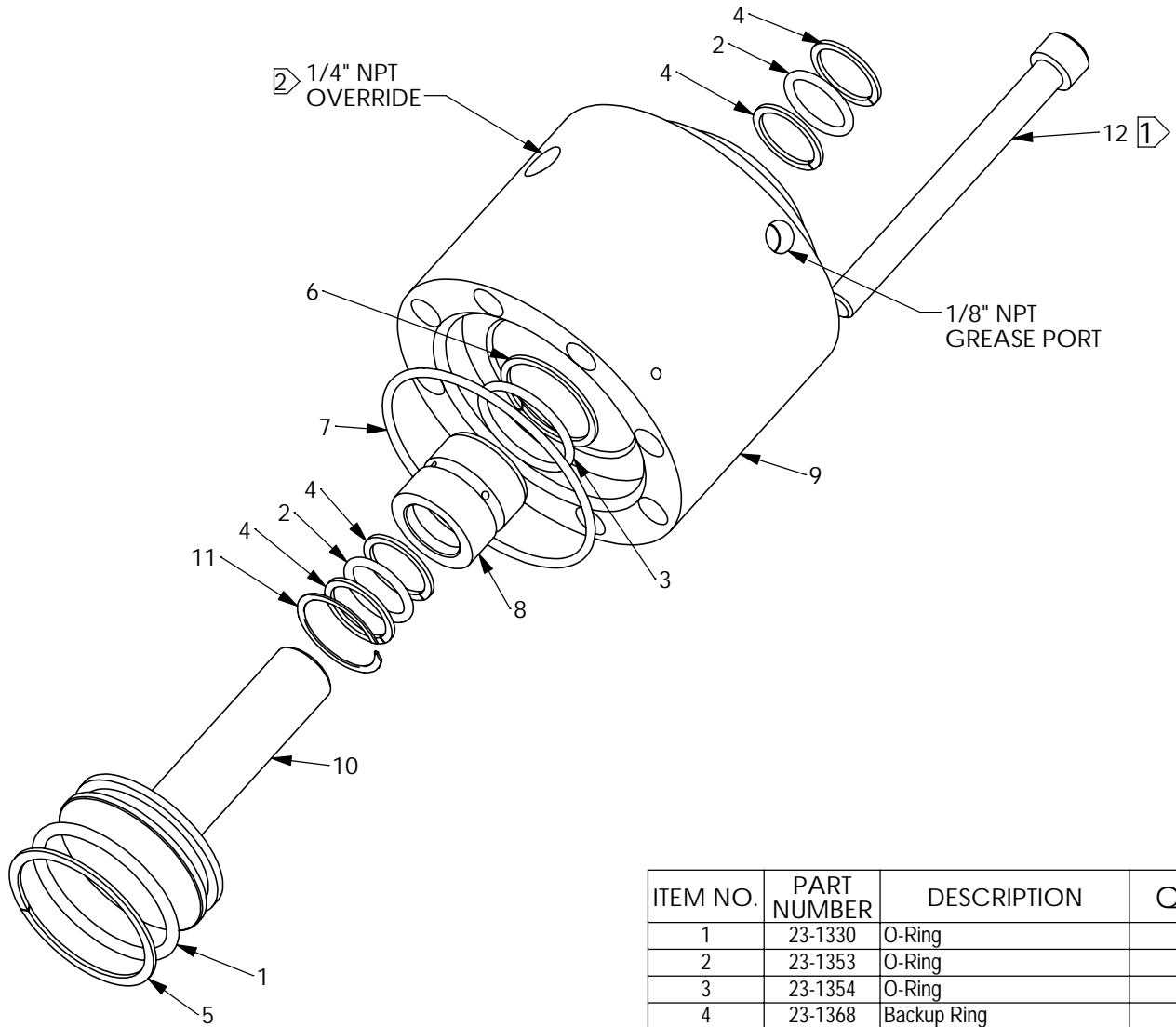


NOTES:

- ① IO to KR Mounting Bolts (8 required, not included)
 - 50-0493: FOR MODELS "L", "R", "D" & "V"
 - 50-0327: FOR MODELS "H" & "W"
- ② OVERRIDE PRESSURE MUST BE EQUAL TO OR EXCEED INLET PRESSURE. NORMAL OPERATION MUST BE VENTED.



ITEM NO.	PART NUMBER	DESCRIPTION	QTY.
1	23-1330	O-Ring	1
2	23-1353	O-Ring	2
3	23-1354	O-Ring	1
4	23-1368	Backup Ring	4
5	23-1413	Backup Ring	1
6	23-1595	Backup Ring	1
7	23-1641	O-Ring	1
8	40-2436	Bushing, KR-75/140 Int Override	1
9	40-4887	Body, Internal Override	1
10	40-4888	Piston, Override	1
11	50-0409	Retaining Ring	1
12	NOTE 1	SHCS	8

REV	ECN	DATE
-	-	-

PROPRIETARY AND CONFIDENTIAL

THE INFORMATION CONTAINED IN THIS DRAWING IS THE SOLE PROPERTY OF PacSeal Hydraulics. ANY REPRODUCTION IN PART OR AS A WHOLE WITHOUT THE WRITTEN PERMISSION OF PacSeal Hydraulics IS PROHIBITED.

TOLERANCES	
UNLESS OTHERWISE SPECIFIED DIMENSIONS ARE IN INCHES	
REMOVE BURRS & SHARP EDGES .020" MAX	
MACH FILLET RADIUS .020" Max	
MACH SURF FLAT WITHIN .001 IN. /IN.	
THREADS: CLASS 2A or 2B	
DIMENSIONS IN () ARE REFERENCE DIM.	
DIMENSIONAL TOLERANCES	
.x	± .020
.xx	± .010
.xxx	± .005
ANGULAR ± .5°	
SURFACE FINISH: 125 ✓	
DO NOT SCALE DRAWING	
MATERIAL	
FINISH	

NAME	DATE
DRAWN FS	7/28/24
CHECKED JB	7/28/24
ENG APPR.	
MFG APPR.	
Q.A.	
COMMENTS:	
THIRD ANGLE PROJECTION	

PacSeal Hydraulics

TITLE:
**Internal Override,
KR-75/140/150/200**

SIZE A	DWG. NO. 40-4886	REV 2
SCALE: 1:2	WEIGHT: 9	SHEET 1 OF 1